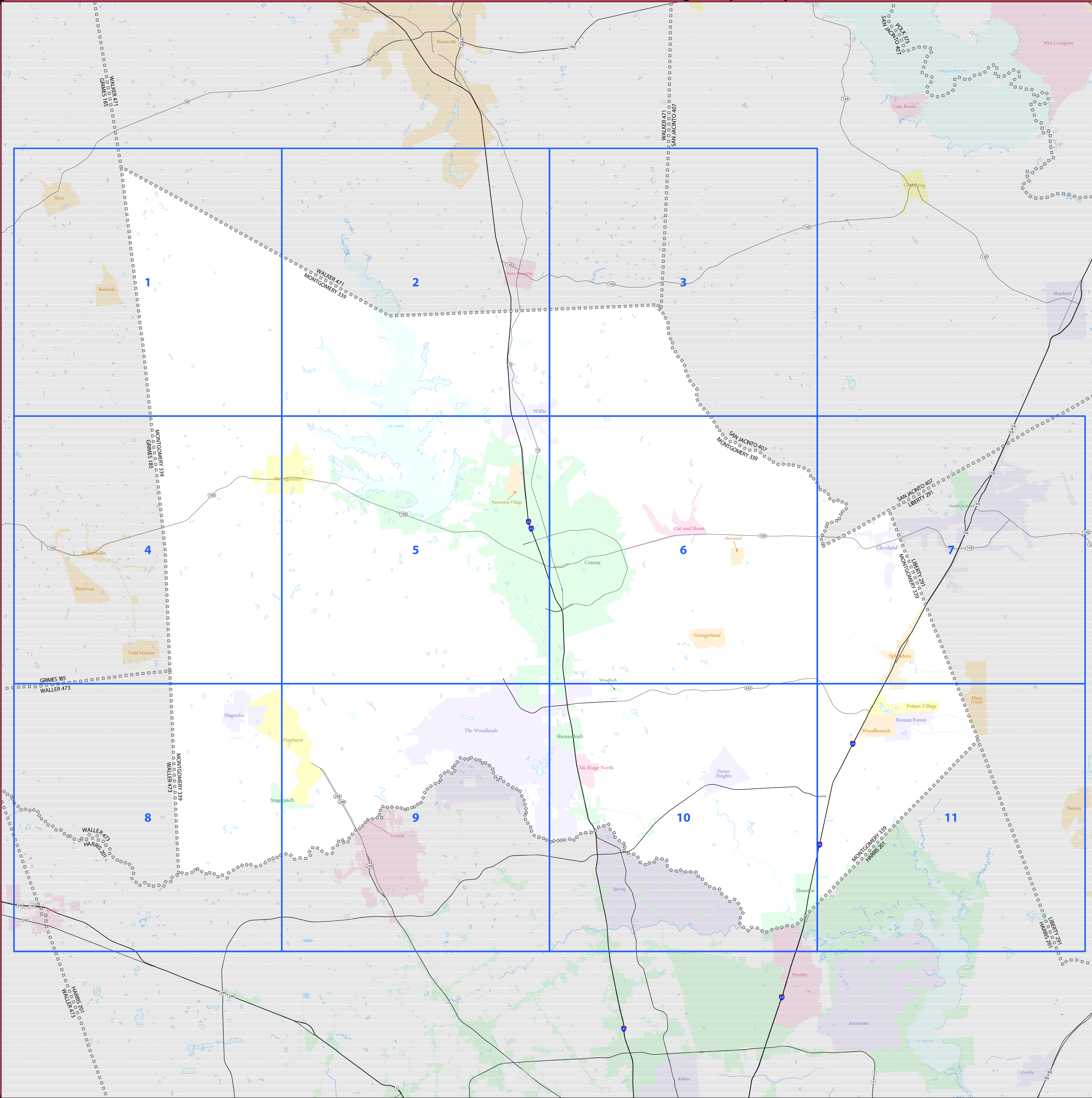


# 2020 CENSUS - SCHOOL DISTRICT REFERENCE MAP: Montgomery County, TX



### LEGEND

SYMBOL DESCRIPTION	SYMBOL	LABEL STYLE
International	☆☆☆☆☆	CANADA
Federal American Indian Reservation	⬢⬢⬢⬢⬢	L'ANSE RES 1880
Off-Reservation Trust Land	⬢⬢⬢⬢⬢	T1880
State American Indian Reservation	⬢⬢⬢⬢⬢	Tama Res 9400
Alaska Native Regional Corporation	+++++	NANA ANRC 52120
State (or statistically equivalent entity)		NEW YORK 36
County (or statistically equivalent entity)	□□□□□	ERIE 029
Minor Civil Division (MCD) <sup>1,2</sup>	○○○○○	Bristol town 07485
Consolidated City	⊙⊙⊙⊙⊙	MILFORD 47500
Incorporated Place <sup>3,4</sup>	■	Davis 18100
Census Designated Place (CDP) <sup>5</sup>	■	Inline Village 35100
Unified School District <sup>4</sup>	●●●●●	UNI 03370
Secondary School District <sup>4</sup>	—	SEC 99965
Elementary School District <sup>4</sup>	—	ELM 02220

DESCRIPTION	SYMBOL	DESCRIPTION	SYMBOL
Interstate	—	Water Body	■
U.S. Highway	—	Pleasant Lake	■
State Highway or State Road	—	Military	■
Other Road	—	National or State Park, Forest, or Recreation Area	■
Road	—	Yosemite NP	■
AWD Trail, Stairway, Alley, Walkway, or Ferry	—	Inset Area	■
Railroad	—	Outside Subject Area	■
Pipeline or Power Line	—		
Ridge or Fence	—		
Nonvisible Boundary or Feature Not Elsewhere Classified	—		

Where international, state, county, and/or MCD boundaries coincide, the map shows the boundary symbol for only the highest-ranking of these boundaries.

Geographic area names are followed by either their FIPS or census code.

1 MCD boundaries are shown in the following states in which some or all MCDs function as general-purpose governmental units: Connecticut, Illinois, Indiana, Kansas, Maine, Massachusetts, Michigan, Minnesota, Missouri, Nebraska, New Hampshire, New Jersey, New York, North Dakota, Ohio, Pennsylvania, Rhode Island, South Dakota, Vermont, and Wisconsin. (Note that Illinois and Nebraska have some counties covered by nongovernmental precincts and Missouri has most counties covered by nongovernmental townships.)

2 A " " following an MCD name denotes a false MCD. A " " following a place name indicates that a false MCD exists with the same name and FIPS code as the place; the false MCD label is not shown.

3 Place label color corresponds to the place fill color.

4 A " " following a label indicates that the school district is in more than one county.

Due to space limitations, some areas and features such as water bodies, parks, and roads may not be labeled.

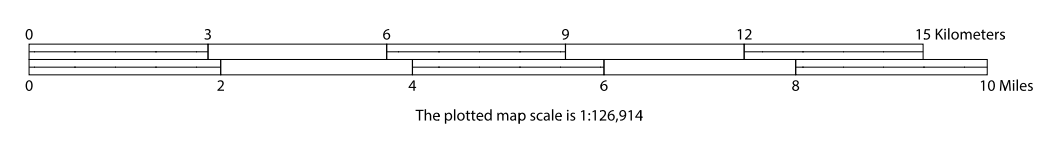
Note: This index map sheet provides the map sheet configuration in relation to the subject entity. Due to scale limitations, map content may be simplified. Refer to parent and/or inset map sheets for detailed map content.

All legal boundaries and names are as of January 1, 2020. The boundaries shown on this map are for Census Bureau statistical data collection and tabulation purposes only; their depiction and designation for statistical purposes does not constitute a determination of jurisdictional authority or rights of ownership or entitlement.

Geographic Vintage: 2020 Census (reference date: January 1, 2020)  
 Data Source: U.S. Census Bureau's MAINTIGR database (TIGER20)  
 Map Created by Geography Division: December 22, 2020

U.S. DEPARTMENT OF COMMERCE U.S. Census Bureau

Projection: Albers Equal Area Conic  
 Datum: NAD83  
 Spheroid: GRS 80  
 1st Standard Parallel: 27 36 51  
 2nd Standard Parallel: 34 43 24  
 Central Meridian: -100 04 35  
 Latitude of Projection's Origin: 25 50 13  
 False Easting: 0  
 False Northing: 0

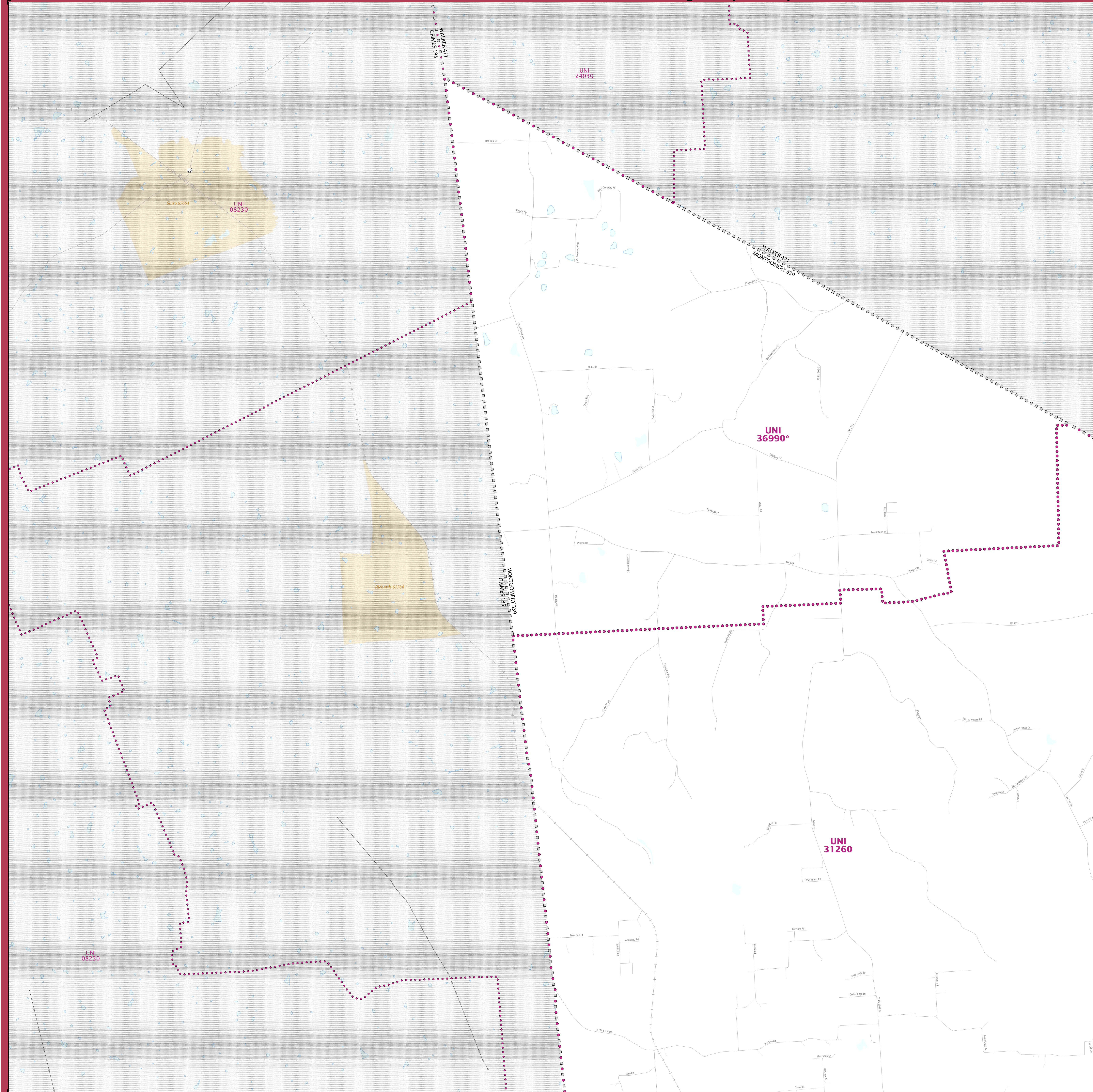


Total Sheets: 12 (Index 1; Parent 11; Inset 0)

NAME: Montgomery County (339)  
 ENTITY TYPE: County or statistically equivalent entity  
 ST: Texas (48)

2020 CENSUS SD REF MAP (INDEX)  
 Sheet ID: 25154833900

# 2020 CENSUS - SCHOOL DISTRICT REFERENCE MAP: Montgomery County, TX



### LEGEND

SYMBOL DESCRIPTION	SYMBOL	LABEL STYLE
International	☆☆☆☆☆	CANADA
Federal American Indian Reservation	[Dotted pattern]	L'ANSE RES 1880
Off-Reservation Trust Land	[Dotted pattern]	T1880
State American Indian Reservation	[Dotted pattern]	Tama Res 9400
Alaska Native Regional Corporation	+++++	NANA ANRC 52120
State (or statistically equivalent entity)		NEW YORK 36
County (or statistically equivalent entity)	□□□□□	ERIE 029
Minor Civil Division (MCD) <sup>1,2</sup>	○○○○○	Bristol town 07485
Consolidated City	○○○○○	MILFORD 47500
Incorporated Place <sup>3,4</sup>	[Color swatches]	Davis 18100
Census Designated Place (CDP) <sup>3</sup>	[Color swatches]	Inline Village 35100
Unified School District <sup>4</sup>	[Purple dotted line]	UNI 05370 SEC 99965 ELM 02220
Secondary School District <sup>4</sup>	[Orange line]	
Elementary School District <sup>4</sup>	[Green line]	

DESCRIPTION	SYMBOL	DESCRIPTION	SYMBOL
Interstate	[Blue line with shield]	Water Body	[Blue area]
U.S. Highway	[Black line with shield]	Military	[Green area]
State Highway or State Road	[Black line with shield]	National or State Park, Forest, or Recreation Area	[Green area]
Other Road	[Thin black line]	Inset Area	[Green area]
RDW: Trail, Stairway, Alley, Walkway, or Ferry	[Thin black line]	Outside Subject Area	[Grey area]
Railroad	[Black line with cross-ticks]		
Pipeline or Power Line	[Black line with cross-ticks]		
Ridge or Fence	[Dashed black line]		
Nonvisible Boundary or Feature Not Elsewhere Classified	[Thin black line]		

Where international, state, county, and/or MCD boundaries coincide, the map shows the boundary symbol for only the highest-ranking of these boundaries.

Geographic area names are followed by either their FIPS or census code.

1 MCD boundaries are shown in the following states in which some or all MCDs function as general-purpose governmental units: Connecticut, Illinois, Indiana, Kansas, Maine, Massachusetts, Michigan, Minnesota, Missouri, Nebraska, New Hampshire, New Jersey, New York, North Dakota, Ohio, Pennsylvania, Rhode Island, South Dakota, Vermont, and Wisconsin. (Note that Illinois and Nebraska have some counties covered by nongovernmental precincts and Missouri has most counties covered by nongovernmental townships.)

2 A " " following an MCD name denotes a false MCD. A " " following a place name indicates that a false MCD exists with the same name and FIPS code as the place; the false MCD label is not shown.

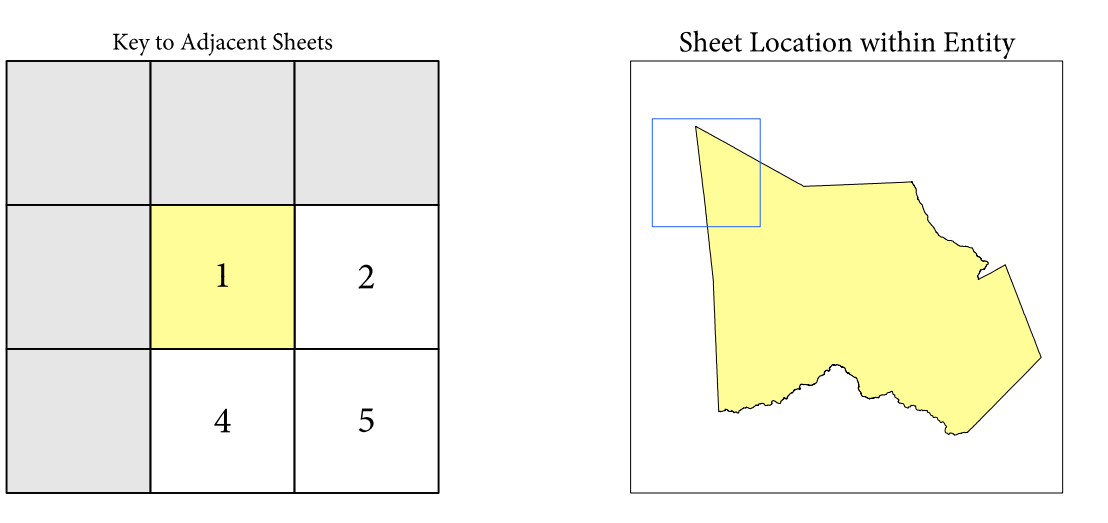
3 Place label color corresponds to the place fill color.

4 A " " following a label indicates that the school district is in more than one county.

Due to space limitations, some areas and features such as water bodies, parks, and roads may not be labeled.

### SUBJECT AREA SCHOOL DISTRICTS ON MAP SHEET

TYPE	CODE	NAME
UNI	31260	Montgomery Independent School District
UNI	36990	Richards Independent School District

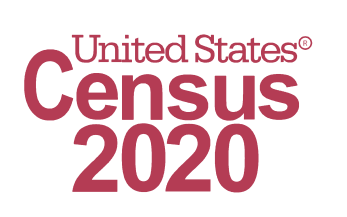
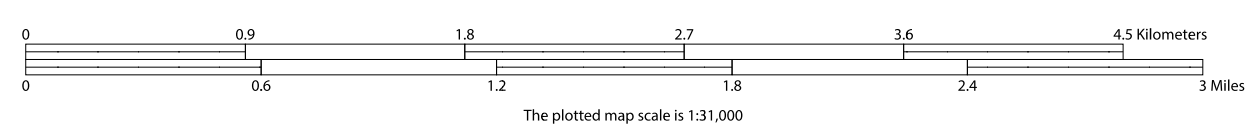


All legal boundaries and names are as of January 1, 2020. The boundaries shown on this map are for Census Bureau statistical data collection and tabulation purposes only; their depiction and designation for statistical purposes does not constitute a determination of jurisdictional authority or rights of ownership or entitlement.

Geographic Vintage: 2020 Census (reference date: January 1, 2020)  
 Data Source: U.S. Census Bureau's MAINTIGR database (T4820)  
 Map Created by Geography Division: December 22, 2020

U.S. DEPARTMENT OF COMMERCE U.S. Census Bureau

Projection: Albers Equal Area Conic  
 Datum: NAD 83  
 Spheroid: GRS 80  
 1st Standard Parallel: 27 36 51  
 2nd Standard Parallel: 34 43 24  
 Central Meridian: -100 04 35  
 Latitude of Projection's Origin: 25 50 13  
 False Easting: 0  
 False Northing: 0

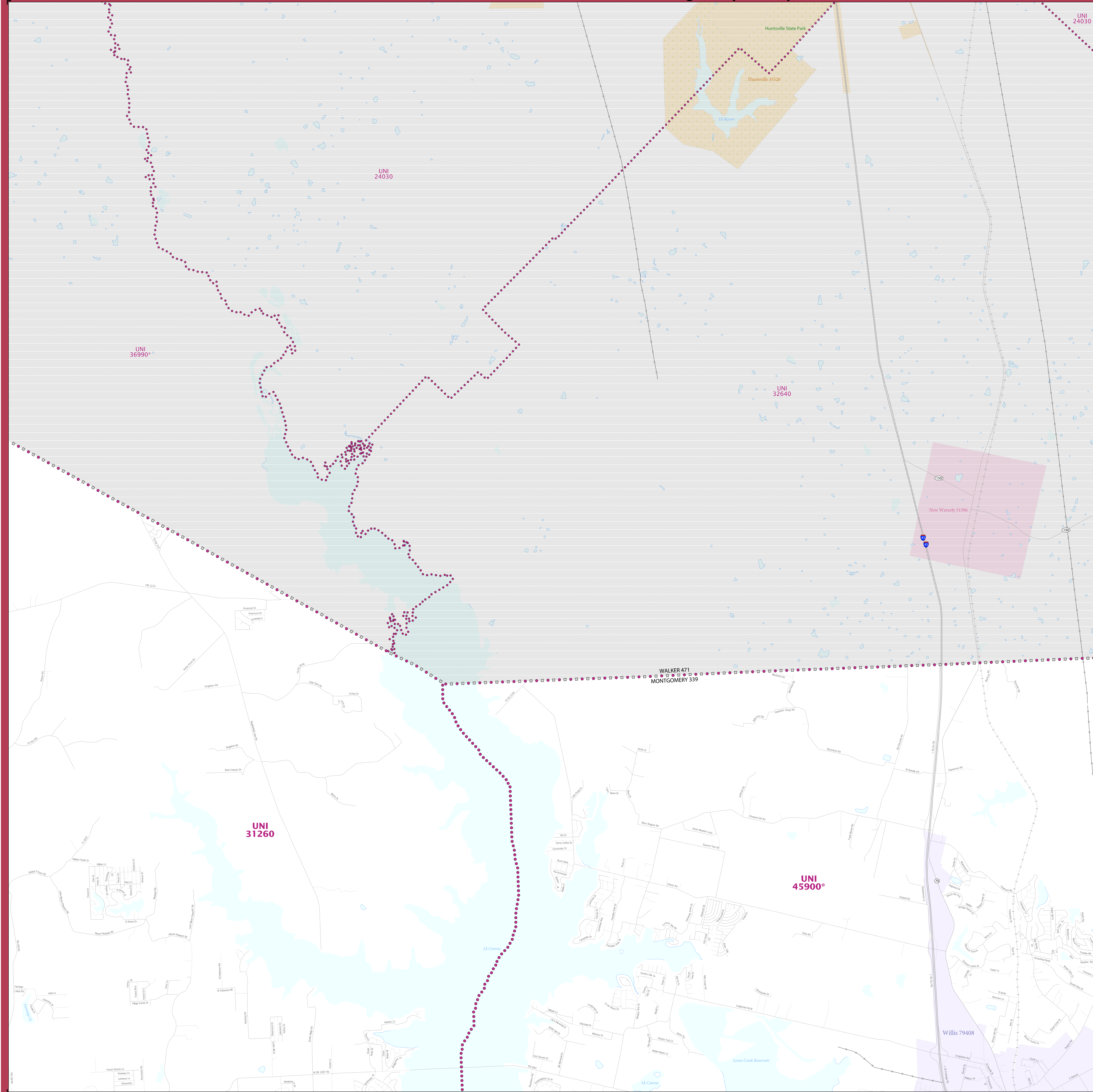


Sheet 1 of 11 PARENT sheets  
 Total Sheets: 12 (Index 1; Parent 11; Inset 0)

NAME: Montgomery County (339)  
 ENTITY TYPE: County or statistically equivalent entity  
 ST: Texas (48)

2020 CENSUS SD REF MAP (PARENT)  
 Sheet ID: 25154833001

# 2020 CENSUS - SCHOOL DISTRICT REFERENCE MAP: Montgomery County, TX



### LEGEND

SYMBOL DESCRIPTION	SYMBOL	LABEL STYLE
International	☆☆☆☆☆	CANADA
Federal American Indian Reservation	[Dotted Pattern]	L'ANSE RES 1880
Off-Reservation Trust Land	[Dotted Pattern]	T1880
State American Indian Reservation	[Dotted Pattern]	Tama Res 9400
Alaska Native Regional Corporation	+++++	NANA ANRC 52120
State (or statistically equivalent entity)		NEW YORK 36
County (or statistically equivalent entity)	□□□□□	ERIE 029
Minor Civil Division (MCD) <sup>1,2</sup>	○○○○○	Bristol town 07485
Consolidated City	⊙⊙⊙⊙⊙	MILFORD 47500
Incorporated Place <sup>3,3</sup>	[Color Swatches]	Davis 18100
Census Designated Place (CDP) <sup>2</sup>	[Color Swatches]	Incline Village 35100
Unified School District <sup>4</sup>	[Dotted Pattern]	<b>UNI 03370</b>
Secondary School District <sup>4</sup>	[Orange Line]	<b>SEC 99965</b>
Elementary School District <sup>4</sup>	[Green Line]	<b>ELM 02220</b>

DESCRIPTION	SYMBOL	DESCRIPTION	SYMBOL
Interstate	[Blue Line]	Water Body	[Blue Area]
U.S. Highway	[Black Line]	Military	[Blue Line]
State Highway or State Road	[Black Line]	National or State Park, Forest, or Recreation Area	[Green Area]
Other Road	[Thin Black Line]	Inset Area	[Green Area]
RWD Trail, Stairway, Alley, Walkway, or Ferry	[Thin Black Line]	Outside Subject Area	[Grey Area]
Railroad	[Black Line]		
Pipeline or Power Line	[Black Line]		
Ridge or Fence	[Dashed Line]		
Non-labeled Boundary or Feature Not Elsewhere Classified	[Thin Black Line]		

Where international, state, county, and/or MCD boundaries coincide, the map shows the boundary symbol for only the highest-ranking of these boundaries.

Geographic area names are followed by either their FIPS or census code.

1 MCD boundaries are shown in the following states in which some or all MCDs function as general-purpose governmental units: Connecticut, Illinois, Indiana, Kansas, Maine, Massachusetts, Michigan, Minnesota, Missouri, Nebraska, New Hampshire, New Jersey, New York, North Dakota, Ohio, Pennsylvania, Rhode Island, South Dakota, Vermont, and Wisconsin. (Note that Illinois and Nebraska have some counties covered by nongovernmental precincts and Missouri has most counties covered by nongovernmental townships.)

2 A " " following an MCD name denotes a false MCD. A " " following a place name indicates that a false MCD exists with the same name and FIPS code as the place; the false MCD label is not shown.

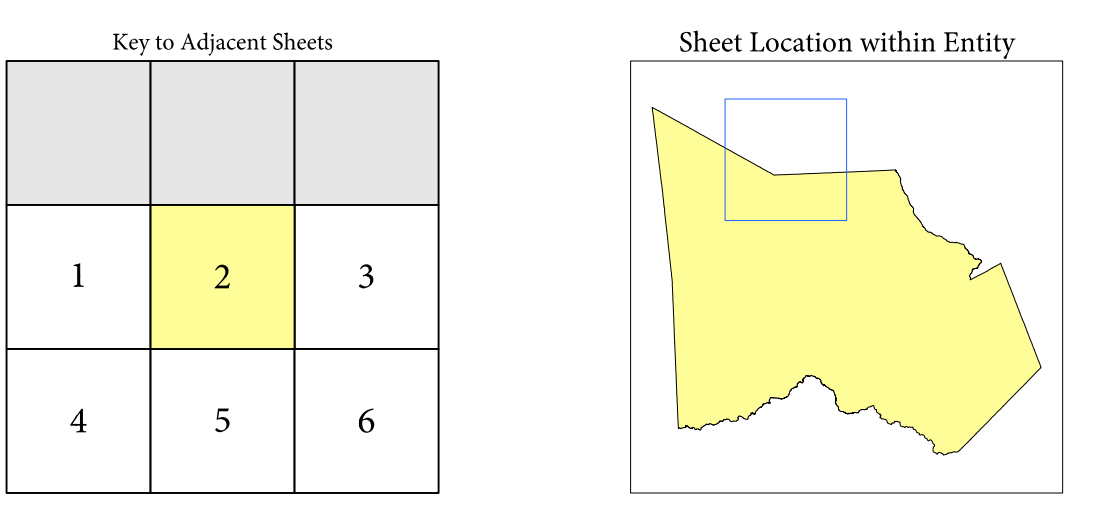
3 Place label color corresponds to the place fill color.

4 A " " following a label indicates that the school district is in more than one county.

Due to space limitations, some areas and features such as water bodies, parks, and roads may not be labeled.

### SUBJECT AREA SCHOOL DISTRICTS ON MAP SHEET

TYPE	CODE	NAME
UNI	31260	Montgomery Independent School District
UNI	45900	Willis Independent School District



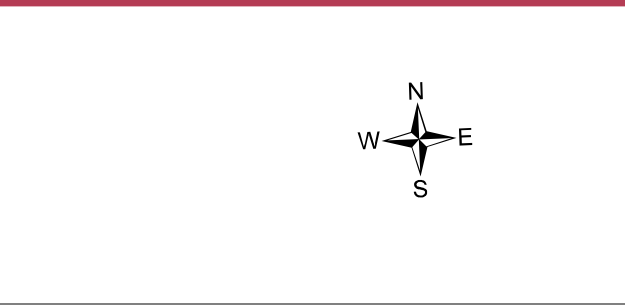
All legal boundaries and names are as of January 1, 2020. The boundaries shown on this map are for Census Bureau statistical data collection and tabulation purposes only; their depiction and designation for statistical purposes does not constitute a determination of jurisdictional authority or rights of ownership or entitlement.

Geographic Vintage: 2020 Census (reference date: January 1, 2020)  
 Data Source: U.S. Census Bureau's MA/TIGER database (TIGER20)  
 Map Created by Geography Division: December 22, 2020

U.S. DEPARTMENT OF COMMERCE U.S. Census Bureau

Projection: Albers Equal Area Conic  
 Datum: NAD 83  
 Spheroid: GRS 80  
 1st Standard Parallel: 27 36 51  
 2nd Standard Parallel: 34 43 24  
 Central Meridian: -100 04 35  
 Latitude of Projection's Origin: 25 50 13  
 False Easting: 0  
 False Northing: 0

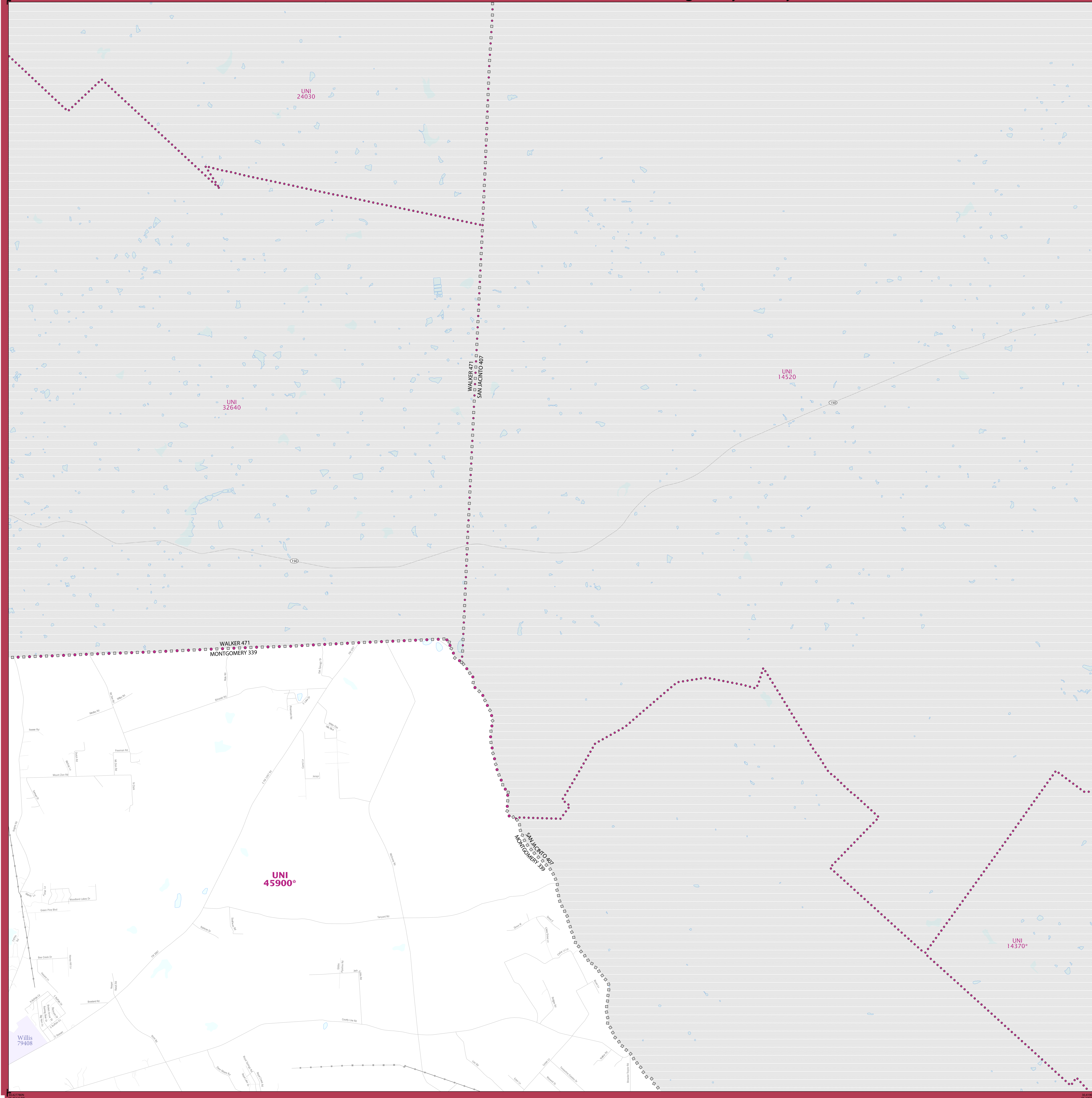
The plotted map scale is 1:1,000



NAME: Montgomery County (339)  
 ENTITY TYPE: County or statistically equivalent entity  
 ST: Texas (48)

2020 CENSUS 50 REF MAP (PARENT)  
 Sheet ID: 25154833902

# 2020 CENSUS - SCHOOL DISTRICT REFERENCE MAP: Montgomery County, TX



### LEGEND

SYMBOL DESCRIPTION	SYMBOL	LABEL STYLE
International	☆☆☆☆☆	CANADA
Federal American Indian Reservation	[Dotted Pattern]	L'ANSE RES 1880
Off-Reservation Trust Land	[Dotted Pattern]	T1880
State American Indian Reservation	[Dotted Pattern]	Tama Res 9400
Alaska Native Regional Corporation	+++++	NANA ANRC 52120
State (or statistically equivalent entity)		NEW YORK 36
County (or statistically equivalent entity)	□□□□□	ERIE 029
Minor Civil Division (MCD) <sup>1,2</sup>	○○○○○	Bristol town 07485
Consolidated City	○○○○○	MILFORD 47500
Incorporated Place <sup>3,3</sup>	[Color Swatches]	Davis 18100
Census Designated Place (CDP) <sup>3</sup>	[Color Swatches]	Inline Village 35100
Unified School District <sup>4</sup>	●●●●●	UNI 03370 SEC 99965 ELM 02220
Secondary School District <sup>4</sup>	—	
Elementary School District <sup>4</sup>	—	

DESCRIPTION	SYMBOL	DESCRIPTION	SYMBOL
Interstate	[Blue Line]	Water Body	[Blue Area]
U.S. Highway	[Black Line]	Military	[Blue Line]
State Highway or State Road	[Black Line]	National or State Park, Forest, or Recreation Area	[Green Area]
Other Road	[Thin Black Line]	Yosemite NP	[Green Area]
4WD Trail, Stairway, Alley, Walkway, or Ferry	[Thin Black Line]	Inset Area	[Green Area]
Railroad	[Black Line]	Outside Subject Area	[Grey Area]
Pipeline or Power Line	[Black Line]		
Ridge or Fence	[Dashed Line]		
Navigable Boundary or Feature Not Elsewhere Classified	[Dashed Line]		

Where international, state, county, and/or MCD boundaries coincide, the map shows the boundary symbol for only the highest-ranking of these boundaries.  
Geographic area names are followed by either their FIPS or census code.

1 MCD boundaries are shown in the following states in which some or all MCDs function as general-purpose governmental units: Connecticut, Illinois, Indiana, Kansas, Maine, Massachusetts, Michigan, Minnesota, Missouri, Nebraska, New Hampshire, New Jersey, New York, North Dakota, Ohio, Pennsylvania, Rhode Island, South Dakota, Vermont, and Wisconsin. (Note that Illinois and Nebraska have some counties covered by nongovernmental precincts and Missouri has most counties covered by nongovernmental townships.)

2 A " " following an MCD name denotes a false MCD. A " " following a place name indicates that a false MCD exists with the same name and FIPS code as the place; the false MCD label is not shown.

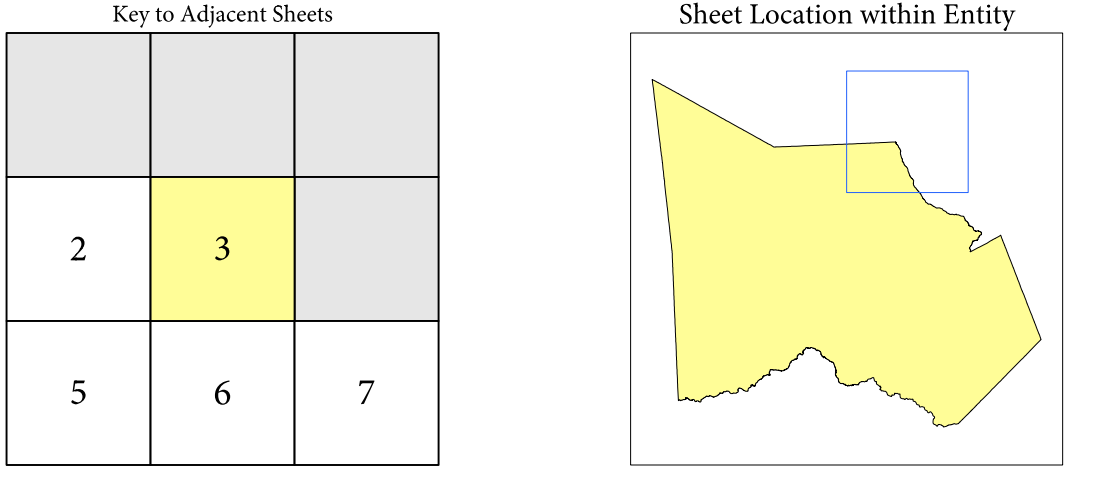
3 Place label color corresponds to the place fill color.

4 A " " following a label indicates that the school district is in more than one county.

Due to space limitations, some areas and features such as water bodies, parks, and roads may not be labeled.

#### SUBJECT AREA SCHOOL DISTRICTS ON MAP SHEET

TYPE	CODE	NAME
UNI	45900	Willis Independent School District

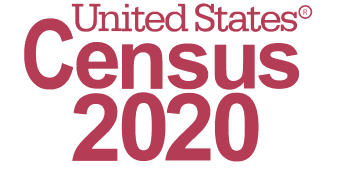
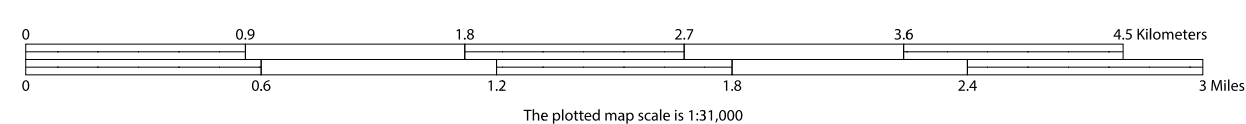


Sheet 3 of 11 PARENT sheets  
Total Sheets: 12 (Index 1; Parent 11; Inset 0)

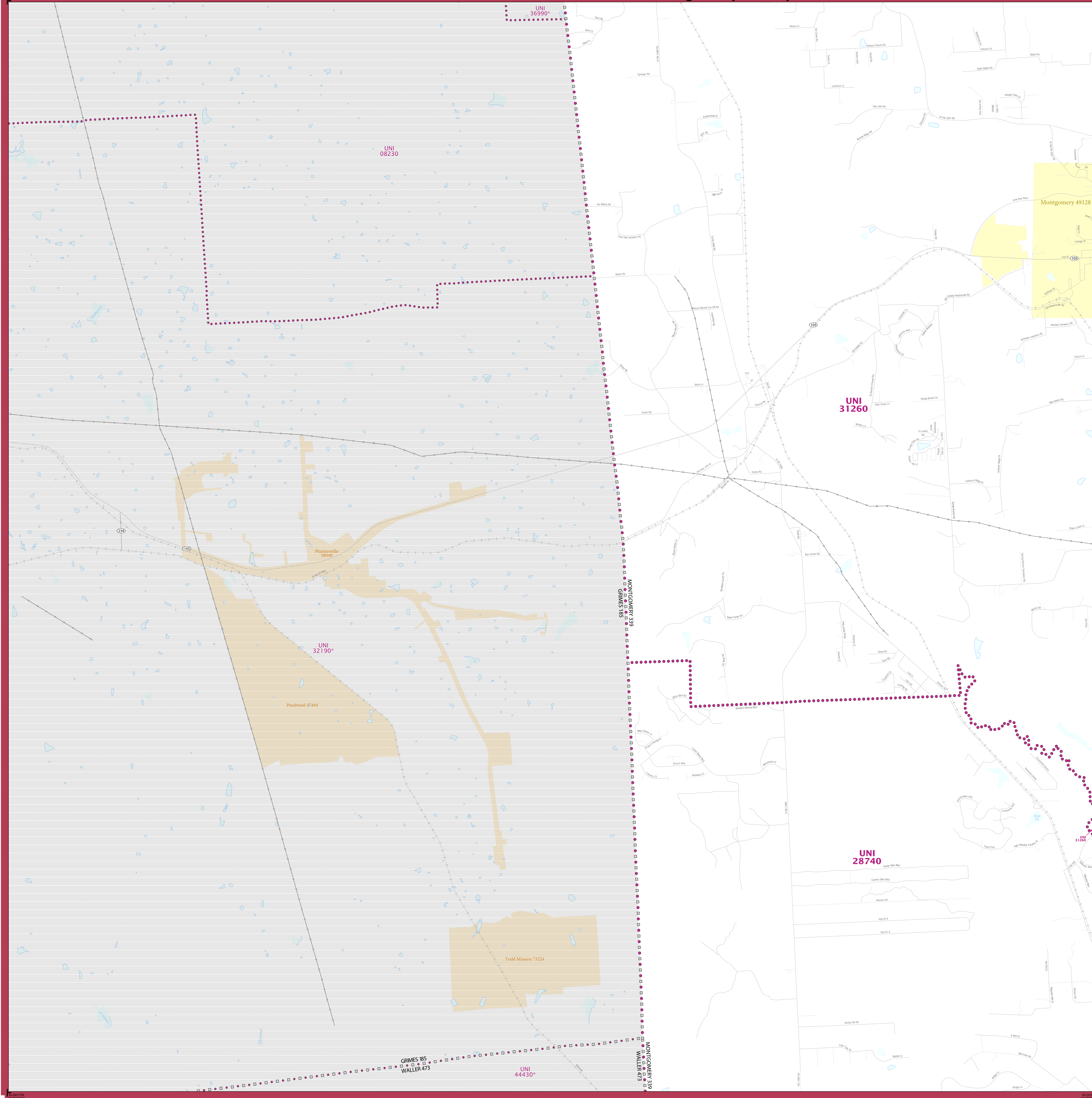
NAME: Montgomery County (339)  
ENTITY TYPE: County or statistically equivalent entity  
ST: Texas (48)

All legal boundaries and names are as of January 1, 2020. The boundaries shown on this map are for Census Bureau statistical data collection and tabulation purposes only; their depiction and designation for statistical purposes does not constitute a determination of jurisdictional authority or rights of ownership or entitlement.  
Geographic Vintage: 2020 Census (reference date: January 1, 2020)  
Data Source: U.S. Census Bureau's MA7/TIGER database (TAB20)  
Map Created by Geography Division: December 22, 2020  
U.S. DEPARTMENT OF COMMERCE U.S. Census Bureau

Projection: Albers Equal Area Conic  
Datum: NAD 83  
Spheroid: GRS 80  
1st Standard Parallel: 27 36 51  
2nd Standard Parallel: 34 43 24  
Central Meridian: -100 04 35  
Latitude of Projection's Origin: 25 50 13  
False Easting: 0  
False Northing: 0



# 2020 CENSUS - SCHOOL DISTRICT REFERENCE MAP: Montgomery County, TX



### LEGEND

SYMBOL DESCRIPTION	SYMBOL	LABEL STYLE
International	☆☆☆☆☆	CANADA
Federal American Indian Reservation	■ ■ ■ ■ ■	L'ANSE RES 1880
Off-Reservation Trust Land	■ ■ ■ ■ ■	T1880
State American Indian Reservation	■ ■ ■ ■ ■	Tama Res 9400
Alaska Native Regional Corporation	+++++	NANA ANRC 52120
State (or statistically equivalent entity)	▨ ▨ ▨ ▨ ▨	NEW YORK 36
County (or statistically equivalent entity)	□ □ □ □ □	ERIE 029
Minor Civil Division (MCD) <sup>1,2</sup>	○ ○ ○ ○ ○	Bristol town 07485
Consolidated City	○ ○ ○ ○ ○	MILFORD 47500
Incorporated Place <sup>3,3</sup>	■ ■ ■ ■ ■	Davis 18100
Census Designated Place (CDP) <sup>3</sup>	■ ■ ■ ■ ■	Inline Village 35100
Unified School District <sup>4</sup>	● ● ● ● ●	UNI 05370 SEC 99965 ELM 02220
Secondary School District <sup>4</sup>	— — — — —	
Elementary School District <sup>4</sup>	— — — — —	

DESCRIPTION	SYMBOL	DESCRIPTION	SYMBOL
Interstate	— 4 —	Water Body	■
U.S. Highway	— 2 —	Military	■
State Highway or State Road	— 1 —	National or State Park, Forest, or Recreation Area	■
Other Road	— 0 —	Yosemite NP	■
AWD Trail, Stairway, Alley, Walkway, or Ferry	— 0 —	Inset Area	■
Railroad	— 0 —	Outside Subject Area	■
Pipeline or Power Line	— 0 —		
Ridge or Fence	— 0 —		
Nonvisible Boundary or Feature Not Elsewhere Classified	— 0 —		

Where international, state, county, and/or MCD boundaries coincide, the map shows the boundary symbol for the highest-ranking of these boundaries.

Geographic area names are followed by either their FIPS or census code.

1 MCD boundaries are shown in the following states in which some or all MCDs function as general-purpose governmental units: Connecticut, Illinois, Indiana, Kansas, Maine, Massachusetts, Michigan, Minnesota, Missouri, Nebraska, New Hampshire, New Jersey, New York, North Dakota, Ohio, Pennsylvania, Rhode Island, South Dakota, Vermont, and Wisconsin. (Note that Illinois and Nebraska have some counties covered by nongovernmental precincts and Missouri has most counties covered by nongovernmental townships.)

2 A " " following an MCD name denotes a false MCD. A " " following a place name indicates that a false MCD exists with the same name and FIPS code as the place; the false MCD label is not shown.

3 Place label color corresponds to the place fill color.

4 A " " following a label indicates that the school district is in more than one county.

Due to space limitations, some areas and features such as water bodies, parks, and roads may not be labeled.

### SUBJECT AREA SCHOOL DISTRICTS ON MAP SHEET

TYPE	CODE	NAME
UNI	28740	Magolia Independent School District
UNI	31260	Montgomery Independent School District

Key to Adjacent Sheets	
1	2
4	5
8	9

Sheet Location within Entity	

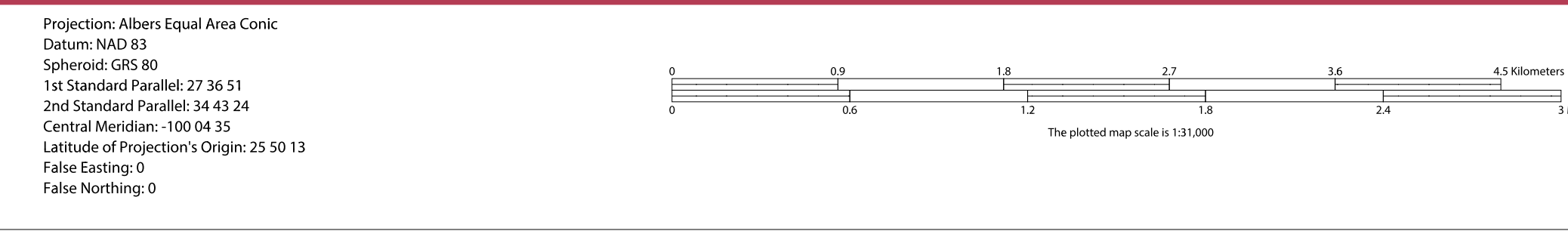
Sheet 4 of 11 PARENT sheets  
Total Sheets: 12 (Index 1; Inset 0)

NAME: Montgomery County (339)  
ENTITY TYPE: County or statistically equivalent entity  
ST: Texas (48)

All legal boundaries and names are as of January 1, 2020. The boundaries shown on this map are for Census Bureau statistical data collection and tabulation purposes only; their depiction and designation for statistical purposes does not constitute a determination of jurisdictional authority or rights of ownership or entitlement.

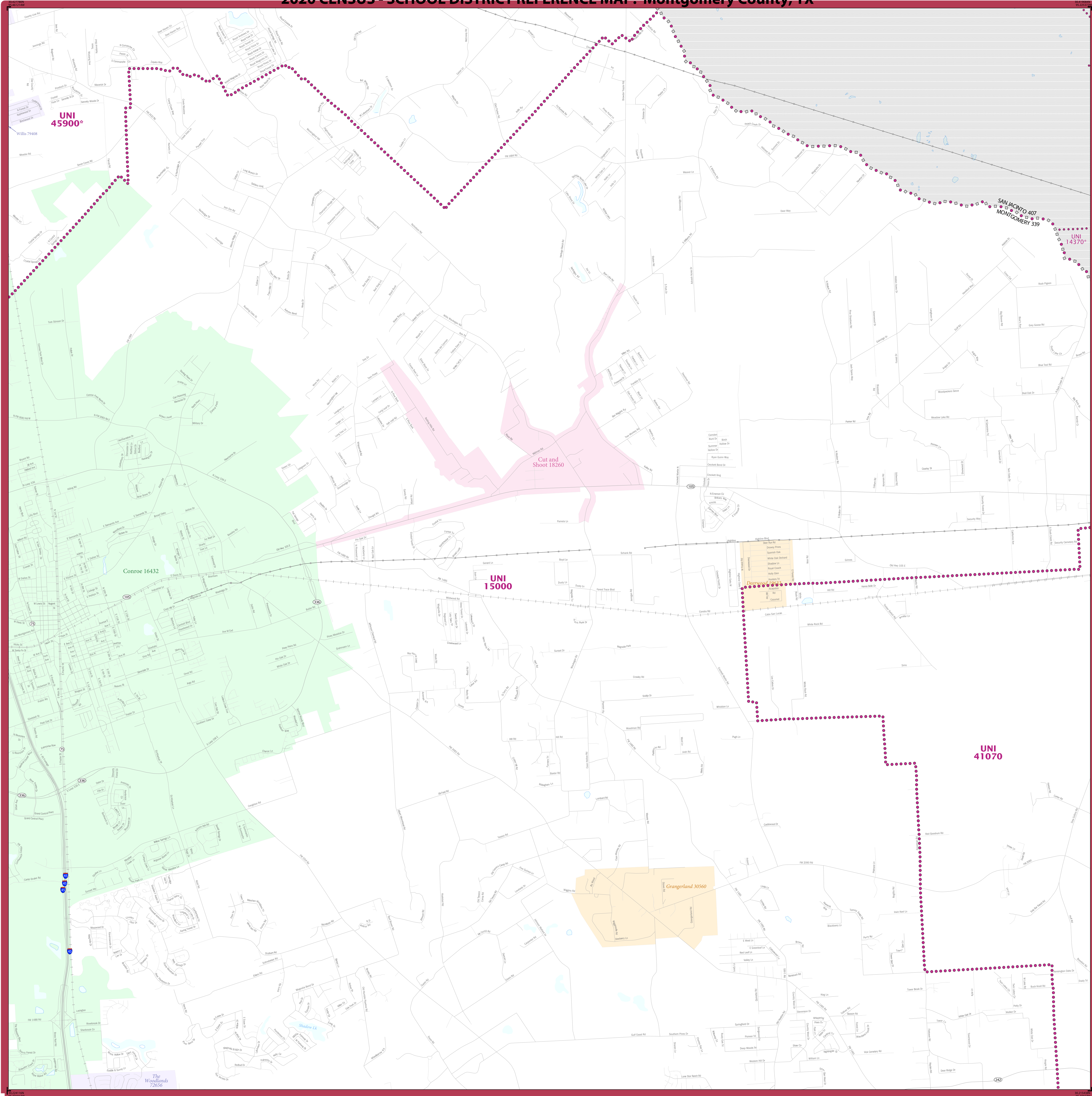
Geographic Vintage: 2020 Census (reference date: January 1, 2020)  
Data Source: U.S. Census Bureau's MA7/TIGER database (TAB20)  
Map Created by Geography Division: December 22, 2020

U.S. DEPARTMENT OF COMMERCE U.S. Census Bureau





# 2020 CENSUS - SCHOOL DISTRICT REFERENCE MAP: Montgomery County, TX



SYMBOL DESCRIPTION	SYMBOL	LABEL STYLE
International	☆☆☆☆☆	CANADA
Federal American Indian Reservation	■ ■ ■ ■ ■	L'ANSE RES 1880
Off-Reservation Trust Land	■ ■ ■ ■ ■	T1880
State American Indian Reservation	■ ■ ■ ■ ■	Tama Res 9400
Alaska Native Regional Corporation	+++++	NANA ANRC 52120
State (or statistically equivalent entity)		NEW YORK 36
County (or statistically equivalent entity)	□ □ □ □ □	ERIE 029
Minor Civil Division (MCD) <sup>1,2</sup>	○ ○ ○ ○ ○	Bristol town 07485
Consolidated City	○ ○ ○ ○ ○	MILFORD 47500
Incorporated Place <sup>3,4</sup>	■ ■ ■ ■ ■	Davis 18100
Census Designated Place (CDP) <sup>3</sup>	■ ■ ■ ■ ■	Inline Village 35100
Unified School District <sup>4</sup>	● ● ● ● ●	UNI 03370
Secondary School District <sup>4</sup>	— — — — —	SEC 99965
Elementary School District <sup>4</sup>	— — — — —	ELM 02220

DESCRIPTION	SYMBOL	DESCRIPTION	SYMBOL
Interstate	— 1 —	Water Body	■
U.S. Highway	— 2 —	Military	■
State Highway or State Road	— 3 —	National or State Park, Forest, or Recreation Area	■
Other Road	— 4 —	Yosemite NP	■
4WD Trail, Stairway, Alley, Walkway, or Ferry	— 5 —	Inset Area	■
Railroad	— 6 —	Outside Subject Area	■
Pipeline or Power Line	— 7 —		
Ridge or Fence	— 8 —		
Notable Boundary or Feature Not Elsewhere Classified	— 9 —		

Where international, state, county, and/or MCD boundaries coincide, the map shows the boundary symbol for only the highest-ranking of these boundaries.

Geographic area names are followed by either their FIPS or census code.

1 MCD boundaries are shown in the following states in which some or all MCDs function as general-purpose governmental units: Connecticut, Illinois, Indiana, Kansas, Maine, Massachusetts, Michigan, Minnesota, Missouri, Nebraska, New Hampshire, New Jersey, New York, North Dakota, Ohio, Pennsylvania, Rhode Island, South Dakota, Vermont, and Wisconsin. (Note that Illinois and Nebraska have some counties covered by nongovernmental precincts and Missouri has most counties covered by nongovernmental townships.)

2 A " " following an MCD name denotes a false MCD. A " " following a place name indicates that a false MCD exists with the same name and FIPS code as the place; the false MCD label is not shown.

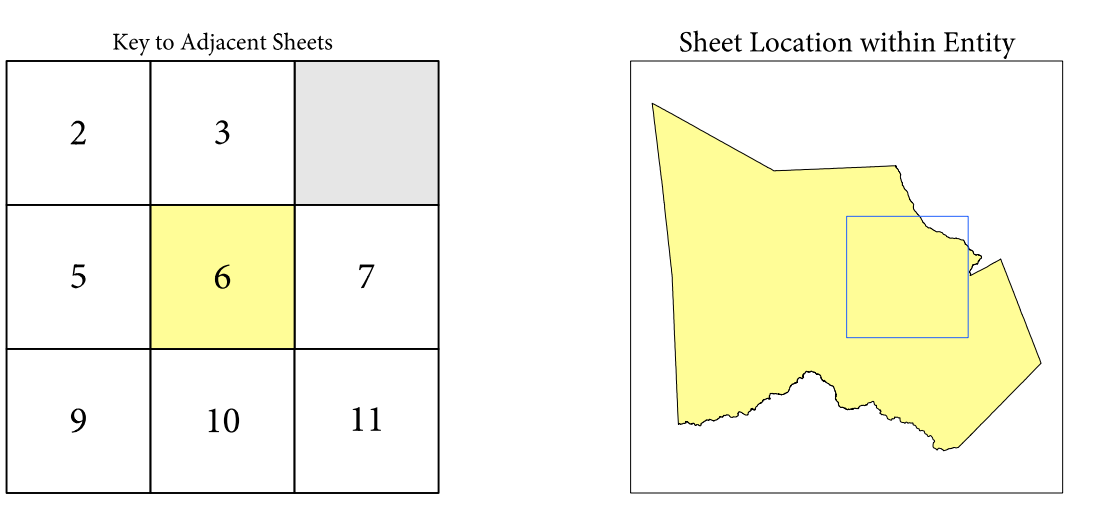
3 Place label color corresponds to the place fill color.

4 A " " following a label indicates that the school district is in more than one county.

Due to space limitations, some areas and features such as water bodies, parks, and roads may not be labeled.

**SUBJECT AREA SCHOOL DISTRICTS ON MAP SHEET**

TYPE	CODE	NAME
UNI	15000	Conroe Independent School District
UNI	41070	Splendora Independent School District
UNI	45900	Willis Independent School District

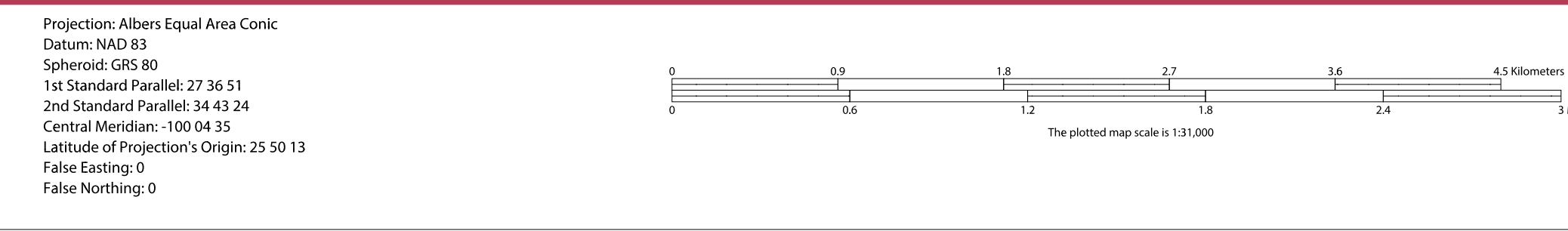


Sheet 6 of 11 PARENT sheets  
 Total Sheets: 12 (Index 1; Parent 11; Inset 0)

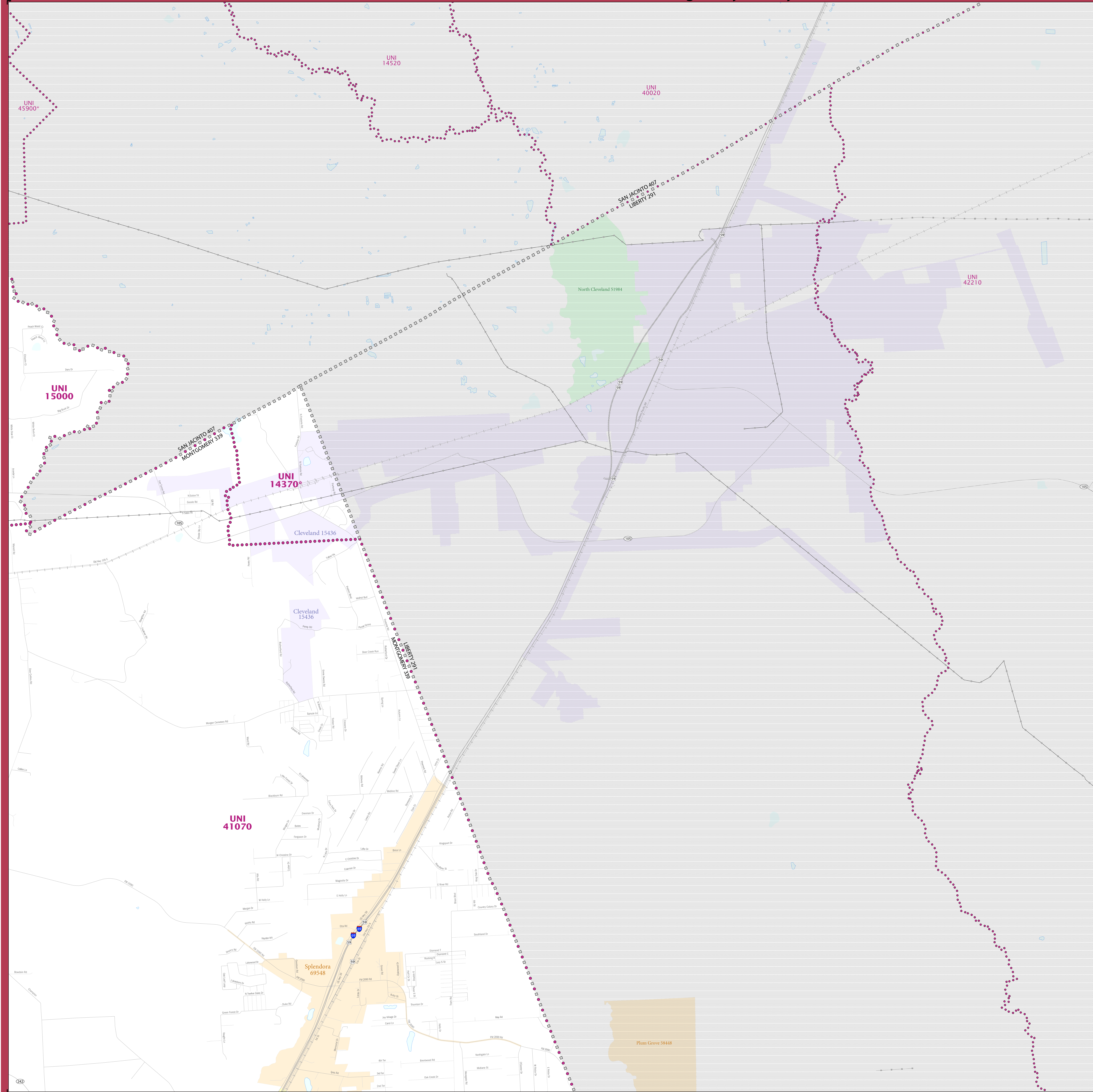
All legal boundaries and names are as of January 1, 2020. The boundaries shown on this map are for Census Bureau statistical data collection and tabulation purposes only; their depiction and designation for statistical purposes does not constitute a determination of jurisdictional authority or rights of ownership or entitlement.

Geographic Vintage: 2020 Census (reference date: January 1, 2020)  
 Data Source: U.S. Census Bureau's MAINTIGR database (TAB20)  
 Map Created by Geography Division: December 22, 2020

U.S. DEPARTMENT OF COMMERCE U.S. Census Bureau



# 2020 CENSUS - SCHOOL DISTRICT REFERENCE MAP: Montgomery County, TX



### LEGEND

SYMBOL DESCRIPTION	SYMBOL	LABEL STYLE
International	☆☆☆☆☆	CANADA
Federal American Indian Reservation	[Dotted Pattern]	L'ANSE RES 1880
Off-Reservation Trust Land	[Dotted Pattern]	T1880
State American Indian Reservation	[Dotted Pattern]	Tama Res 9400
Alaska Native Regional Corporation	+++++	NANA ANRC 52120
State (or statistically equivalent entity)	//////	NEW YORK 36
County (or statistically equivalent entity)	□□□□	ERIE 029
Minor Civil Division (MCD) <sup>1,2</sup>	○○○○○	Bristol town 07485
Consolidated City	○○○○○	MILFORD 47500
Incorporated Place <sup>3,3</sup>	[Color Swatches]	Davis 18100
Census Designated Place (CDP) <sup>3</sup>	[Color Swatches]	Inline Village 35100
Unified School District <sup>4</sup>	[Purple Dotted Line]	UNI 03370 SEC 99965 ELM 02220
Secondary School District <sup>4</sup>	[Orange Line]	
Elementary School District <sup>4</sup>	[Green Line]	

DESCRIPTION	SYMBOL	DESCRIPTION	SYMBOL
Interstate	[Blue Line]	Water Body	[Blue Area]
U.S. Highway	[Black Line]	Military	[Blue Line]
State Highway or State Road	[Black Line]	National or State Park, Forest, or Recreation Area	[Green Area]
Other Road	[Thin Black Line]	Inset Area	[Green Area]
4WD Trail, Stairway, Alley, Walkway, or Ferry	[Thin Black Line]	Outside Subject Area	[Grey Area]
Railroad	[Black Line]		
Pipeline or Power Line	[Black Line]		
Ridge or Fence	[Dashed Line]		
Non-labeled Boundary or Feature Not Elsewhere Classified	[Thin Black Line]		

Where international, state, county, and/or MCD boundaries coincide, the map shows the boundary symbol for only the highest-ranking of these boundaries.  
 Geographic area names are followed by either their FIPS or census code.

1 MCD boundaries are shown in the following states in which some or all MCDs function as general-purpose governmental units: Connecticut, Illinois, Indiana, Kansas, Maine, Massachusetts, Michigan, Minnesota, Missouri, Nebraska, New Hampshire, New Jersey, New York, North Dakota, Ohio, Pennsylvania, Rhode Island, South Dakota, Vermont, and Wisconsin. (Note that Illinois and Nebraska have some counties covered by nongovernmental precincts and Missouri has most counties covered by nongovernmental townships.)

2 A " " following an MCD name denotes a false MCD. A " " following a place name indicates that a false MCD exists with the same name and FIPS code as the place; the false MCD label is not shown.

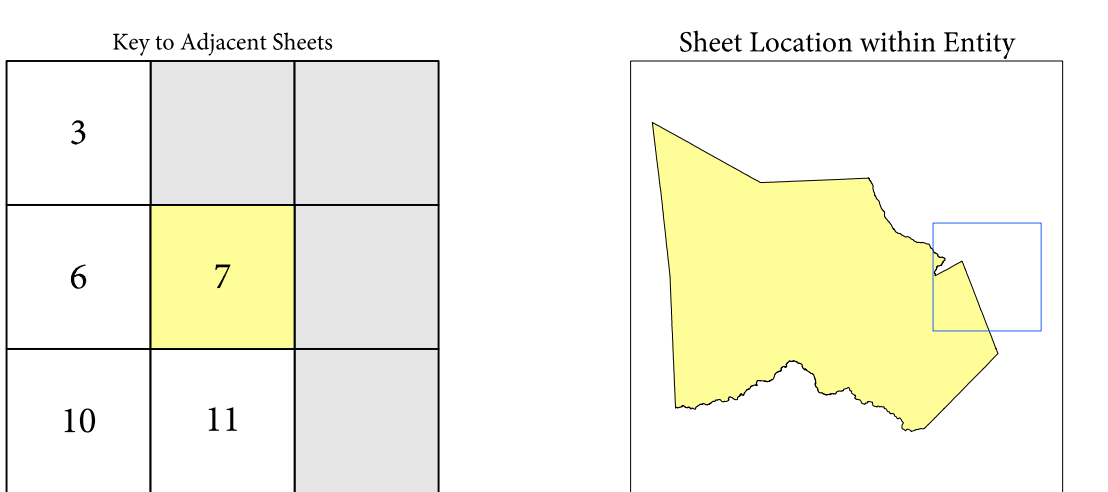
3 Place label color corresponds to the place fill color.

4 A " " following a label indicates that the school district is in more than one county.

Due to space limitations, some areas and features such as water bodies, parks, and roads may not be labeled.

### SUBJECT AREA SCHOOL DISTRICTS ON MAP SHEET

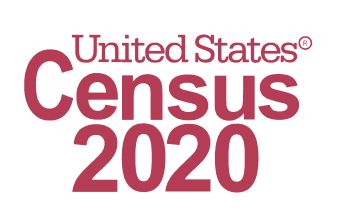
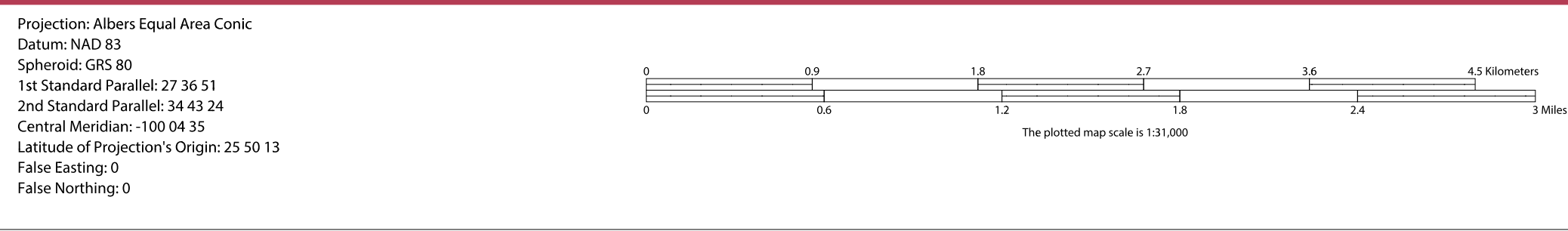
TYPE	CODE	NAME
UNI	14370	Cleveland Independent School District
UNI	15000	Corroze Independent School District
UNI	41070	Splendor Independent School District



Sheet 7 of 11 PARENT sheets  
 Total Sheets: 12 (Index 1; Parent 11; Inset 0)

NAME: Montgomery County (339)  
 ENTITY TYPE: County or statistically equivalent entity  
 ST: Texas (48)

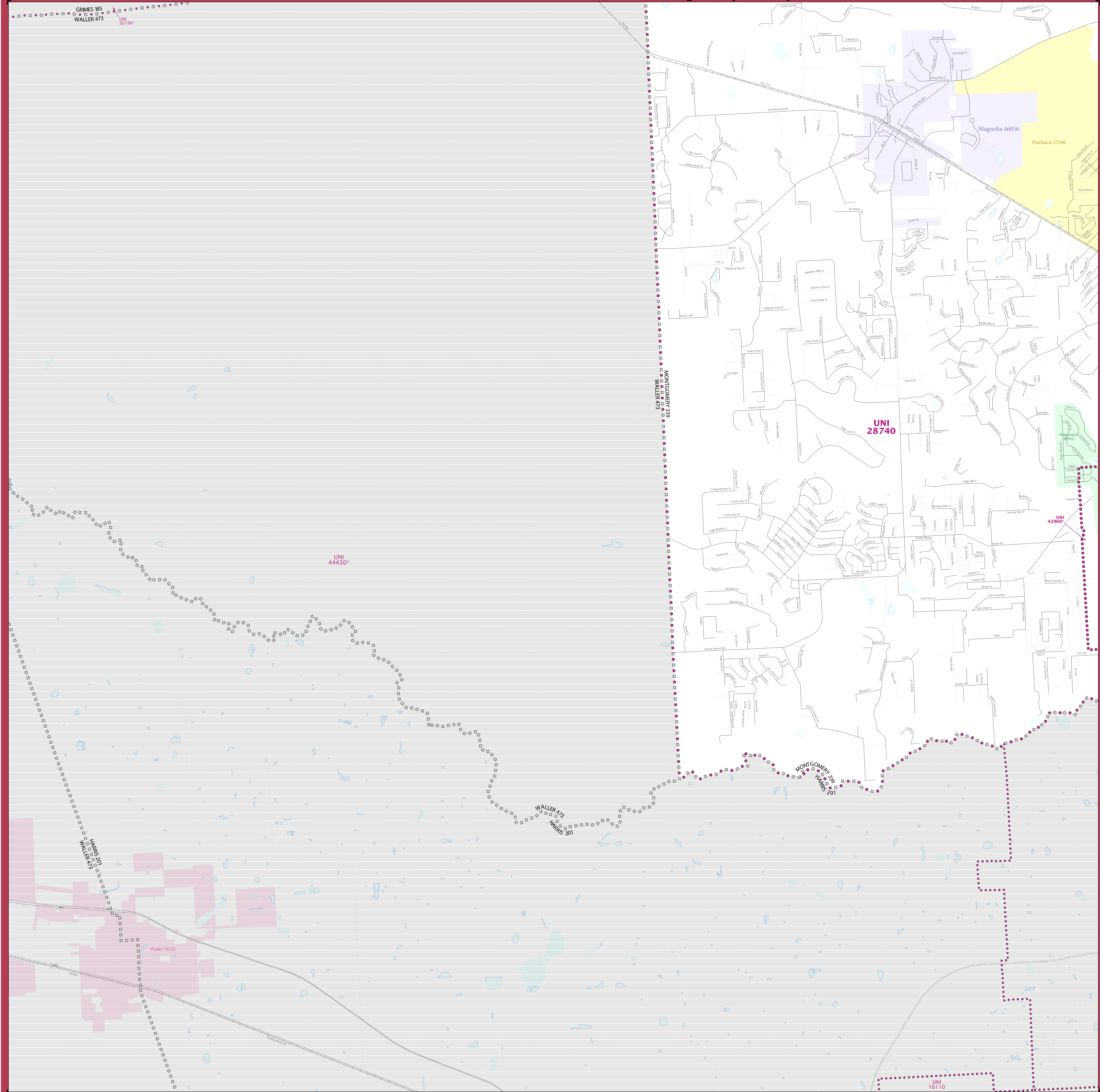
All legal boundaries and names are as of January 1, 2020. The boundaries shown on this map are for Census Bureau statistical data collection and tabulation purposes only; their depiction and designation for statistical purposes does not constitute a determination of jurisdictional authority or rights of ownership or entitlement.  
 Geographic Vintage: 2020 Census (reference date: January 1, 2020)  
 Data Source: U.S. Census Bureau's MA7/TIGER database (TAB20)  
 Map Created by Geography Division: December 22, 2020  
 U.S. DEPARTMENT OF COMMERCE U.S. Census Bureau



2020 CENSUS 50 REF MAP (PARENT)  
 Sheet ID: 25154833907



# 2020 CENSUS - SCHOOL DISTRICT REFERENCE MAP: Montgomery County, TX



### LEGEND

SYMBOL DESCRIPTION	SYMBOL	LABEL STYLE
International	☆☆☆☆☆	CANADA
Federal American Indian Reservation	■ ■ ■ ■ ■	L'ANSE RES 1880
Off-Reservation Trust Land	■ ■ ■ ■ ■	T1880
State American Indian Reservation	■ ■ ■ ■ ■	Tama Res 9400
Alaska Native Regional Corporation	+++++	NANA ANRC 52120
State (or statistically equivalent entity)		NEW YORK 36
County (or statistically equivalent entity)	□ □ □ □ □	ERIE 029
Minor Civil Division (MCD) <sup>1,2</sup>	○ ○ ○ ○ ○	Bristol town 07485
Consolidated City	● ● ● ● ●	MILFORD 47500
Incorporated Place <sup>3,4</sup>	■ ■ ■ ■ ■	Davis 18100
Census Designated Place (CDP) <sup>3</sup>	■ ■ ■ ■ ■	Inline Village 35100
Unified School District <sup>4</sup>	● ● ● ● ●	UNI 03370
Secondary School District <sup>4</sup>	— — — — —	SEC 99965
Elementary School District <sup>4</sup>	— — — — —	ELM 02220

DESCRIPTION	SYMBOL	DESCRIPTION	SYMBOL
Interstate	— 4 —	Water Body	■ ■ ■ ■ ■
U.S. Highway	— 2 —	Military	■ ■ ■ ■ ■
State Highway or State Road	— 1 —	National or State Park, Forest, or Recreation Area	■ ■ ■ ■ ■
Other Road	— — — — —	Yosemite NP	■ ■ ■ ■ ■
4WD Trail, Stairway, Alley, Walkway, or Ferry	— · — · — · —	Inset Area	■ ■ ■ ■ ■
Railroad	— + — + — + —	Outside Subject Area	■ ■ ■ ■ ■
Pipeline or Power Line	— · — · — · —		
Ridge or Fence	— · — · — · —		
Nonclassifiable Boundary or Feature Not Elsewhere Classified	— · — · — · —		

Where international, state, county, and/or MCD boundaries coincide, the map shows the boundary symbol for only the highest-ranking of these boundaries.

Geographic area names are followed by either their FIPS or census code.

1 MCD boundaries are shown in the following states in which some or all MCDs function as general-purpose governmental units: Connecticut, Illinois, Indiana, Kansas, Maine, Massachusetts, Michigan, Minnesota, Missouri, Nebraska, New Hampshire, New Jersey, New York, North Dakota, Ohio, Pennsylvania, Rhode Island, South Dakota, Vermont, and Wisconsin. (Note that Illinois and Nebraska have some counties covered by nongovernmental precincts and Missouri has most counties covered by nongovernmental townships.)

2 A " " following an MCD name denotes a false MCD. A " " following a place name indicates that a false MCD exists with the same name and FIPS code as the place; the false MCD label is not shown.

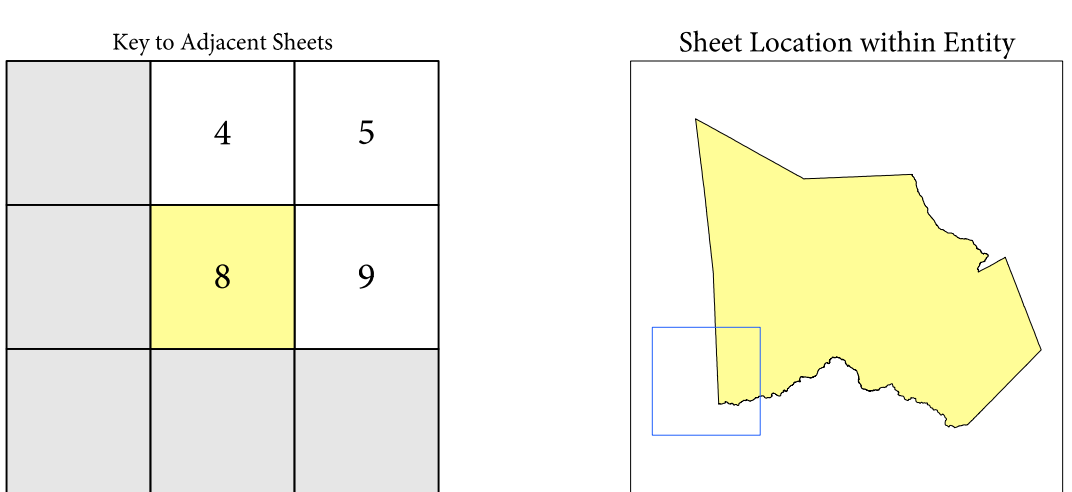
3 Place label color corresponds to the place fill color.

4 A " " following a label indicates that the school district is in more than one county.

Due to space limitations, some areas and features such as water bodies, parks, and roads may not be labeled.

### SUBJECT AREA SCHOOL DISTRICTS ON MAP SHEET

TYPE	CODE	NAME
UNI	28740	Magnolia Independent School District
UNI	42960	Tomball Independent School District



Sheet 8 of 11 PARENT sheets  
Total Sheets: 12 (Index 1; Parent 11; Inset 0)

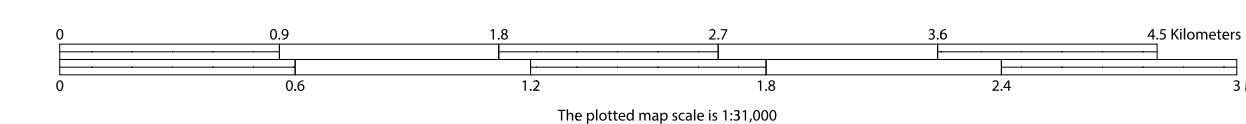
NAME: Montgomery County (339)  
ENTITY TYPE: County or statistically equivalent entity  
ST: Texas (48)

All legal boundaries and names are as of January 1, 2020. The boundaries shown on this map are for Census Bureau statistical data collection and tabulation purposes only; their depiction and designation for statistical purposes does not constitute a determination of jurisdictional authority or rights of ownership or entitlement.

Geographic: Vintage: 2020 Census (reference date: January 1, 2020)  
Data Source: U.S. Census Bureau's MA7/TIGER database (TIGER20)  
Map Created by Geography Division: December 22, 2020

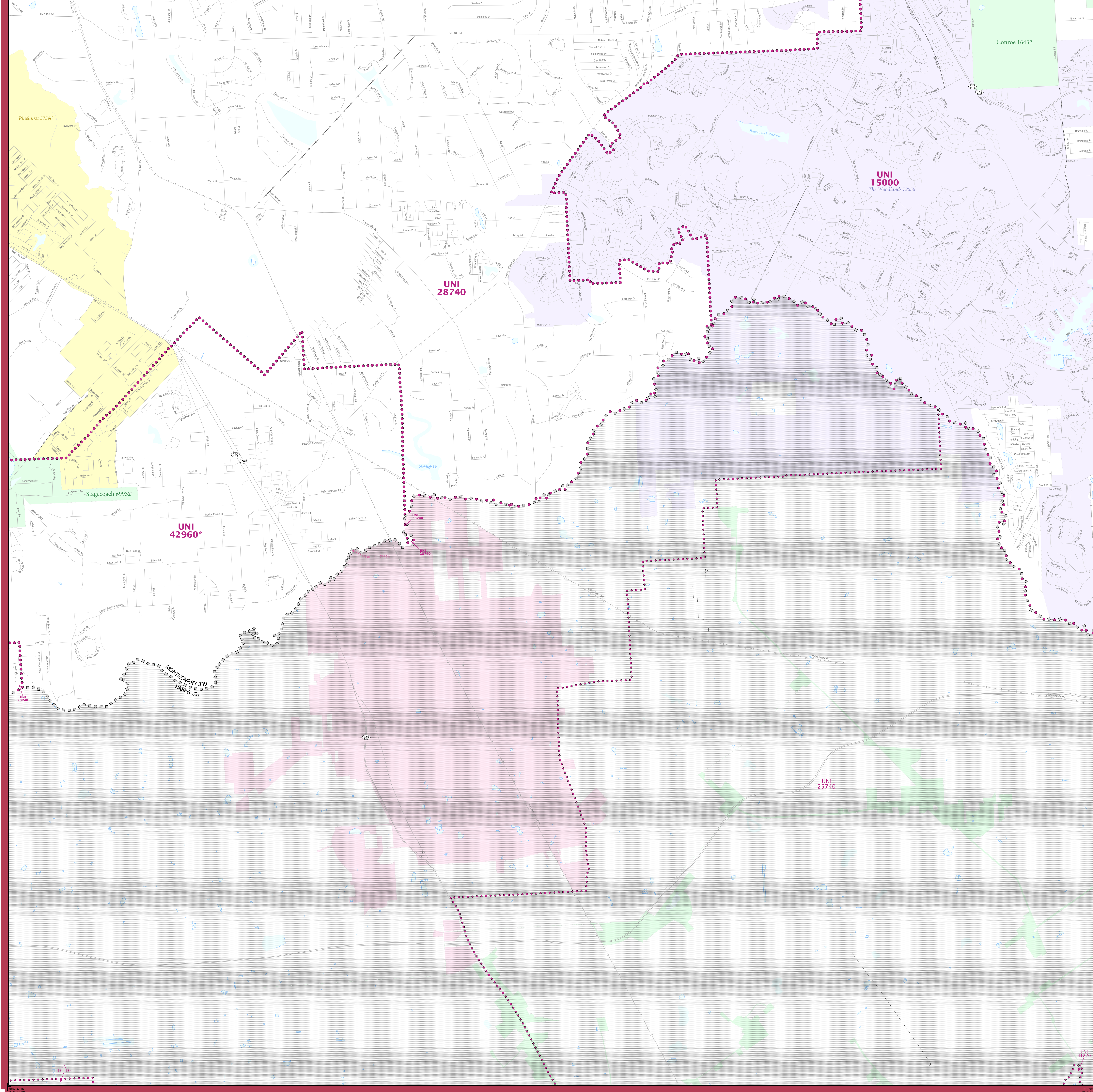
U.S. DEPARTMENT OF COMMERCE U.S. Census Bureau

Projection: Albers Equal Area Conic  
Datum: NAD 83  
Spheroid: GRS 80  
1st Standard Parallel: 27 36 51  
2nd Standard Parallel: 34 43 24  
Central Meridian: -100 04 35  
Latitude of Projection's Origin: 25 50 13  
False Easting: 0  
False Northing: 0



2020 CENSUS SD REF MAP (PARENT)  
Sheet ID: 25154833908

# 2020 CENSUS - SCHOOL DISTRICT REFERENCE MAP: Montgomery County, TX



### LEGEND

SYMBOL DESCRIPTION	SYMBOL	LABEL STYLE
International	☆☆☆☆☆	CANADA
Federal American Indian Reservation	[Dotted pattern]	L'ANSE RES 1880
Off-Reservation Trust Land	[Dotted pattern]	T1880
State American Indian Reservation	[Dotted pattern]	Tama Res 9400
Alaska Native Regional Corporation	+++++	NANA ANRC 52120
State (or statistically equivalent entity)		NEW YORK 36
County (or statistically equivalent entity)	□□□□□	ERIE 029
Minor Civil Division (MCD) <sup>1,2</sup>	○○○○○	Bristol town 07485
Consolidated City	○●○○○	MILFORD 47500
Incorporated Place <sup>3,4</sup>	[Color swatches]	Davis 18100
Census Designated Place (CDP) <sup>3</sup>	[Color swatches]	Incline Village 35100
Unified School District <sup>4</sup>	[Dotted pattern]	UNI 03370
Secondary School District <sup>4</sup>	[Orange line]	SEC 99965
Elementary School District <sup>4</sup>	[Green line]	ELM 02220

DESCRIPTION	SYMBOL	DESCRIPTION	SYMBOL
Interstate	[Blue line with shield]	Water Body	[Blue wavy line]
U.S. Highway	[Black line with shield]	Military	[Blue line with 'M']
State Highway or State Road	[Black line with shield]	National or State Park, Forest, or Recreation Area	[Green wavy line]
Other Road	[Black line]	Yosemite NP	[Green wavy line]
4WD Trail, Steepway, Alley, Walkway, or Ferry	[Dashed line]	Inset Area	[Green box]
Railroad	[Black line with cross-ticks]	Outside Subject Area	[Grey box]
Pipeline or Power Line	[Black line with cross-ticks]		
Ridge or Fence	[Black line with cross-ticks]		
Notable Boundary or Feature Not Elsewhere Classified	[Black line]		

Where international, state, county, and/or MCD boundaries coincide, the map shows the boundary symbol for only the highest-ranking of these boundaries.

Geographic area names are followed by either their FIPS or census code.

1 MCD boundaries are shown in the following states in which some or all MCDs function as general-purpose governmental units: Connecticut, Illinois, Indiana, Kansas, Maine, Massachusetts, Michigan, Minnesota, Missouri, Nebraska, New Hampshire, New Jersey, New York, North Dakota, Ohio, Pennsylvania, Rhode Island, South Dakota, Vermont, and Wisconsin. (Note that Illinois and Nebraska have some counties covered by nongovernmental precincts and Missouri has most counties covered by nongovernmental townships.)

2 A "\*" following an MCD name denotes a false MCD. A "\*" following a place name indicates that a false MCD exists with the same name and FIPS code as the place; the false MCD label is not shown.

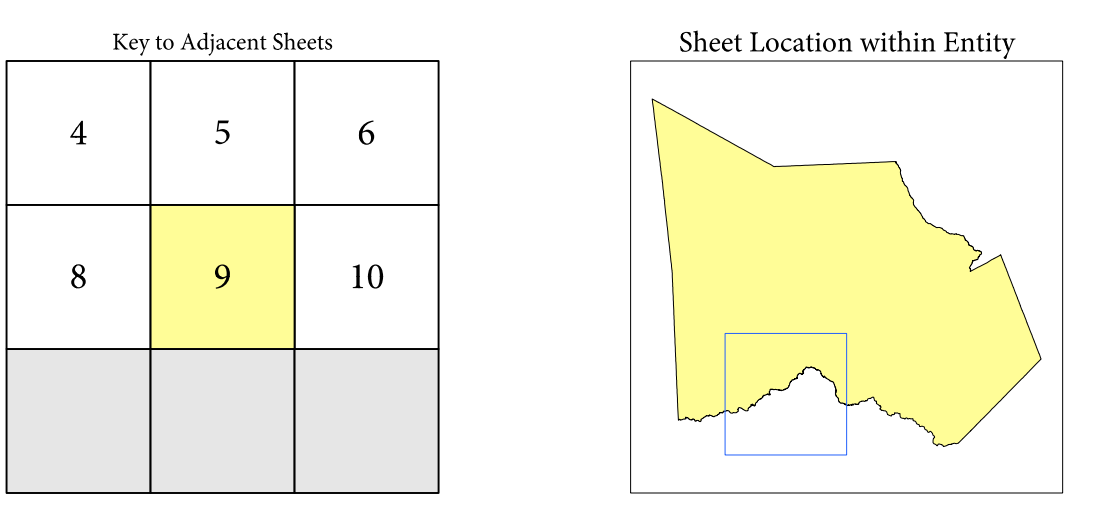
3 Place label color corresponds to the place fill color.

4 A "\*" following a label indicates that the school district is in more than one county.

Due to space limitations, some areas and features such as water bodies, parks, and roads may not be labeled.

### SUBJECT AREA SCHOOL DISTRICTS ON MAP SHEET

TYPE	CODE	NAME
UNI	15000	Conroe Independent School District
UNI	28740	Magnolia Independent School District
UNI	42960	Tomball Independent School District



Sheet 9 of 11 PARENT sheets  
Total Sheets: 12 (Index 1; Parent 11; Inset 0)

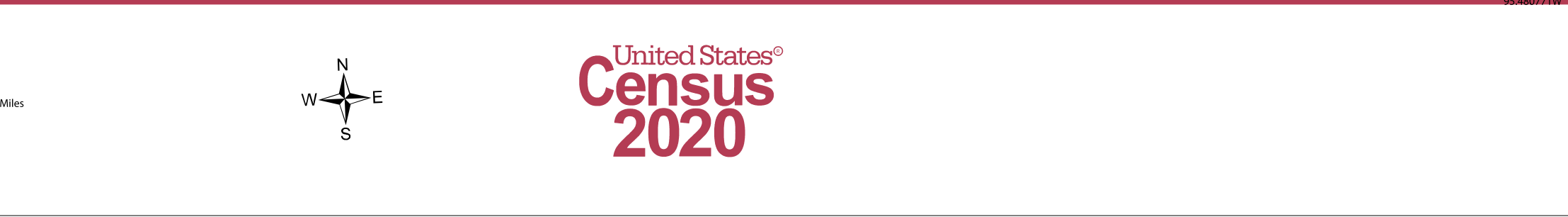
All legal boundaries and names are as of January 1, 2020. The boundaries shown on this map are for Census Bureau statistical data collection and tabulation purposes only; their depiction and designation for statistical purposes does not constitute a determination of jurisdictional authority or rights of ownership or entitlement.

Geographic Vintage: 2020 Census (reference date: January 1, 2020)  
Data Source: U.S. Census Bureau's MA7/TIGER database (TIGER20)  
Map Created by Geography Division: December 22, 2020

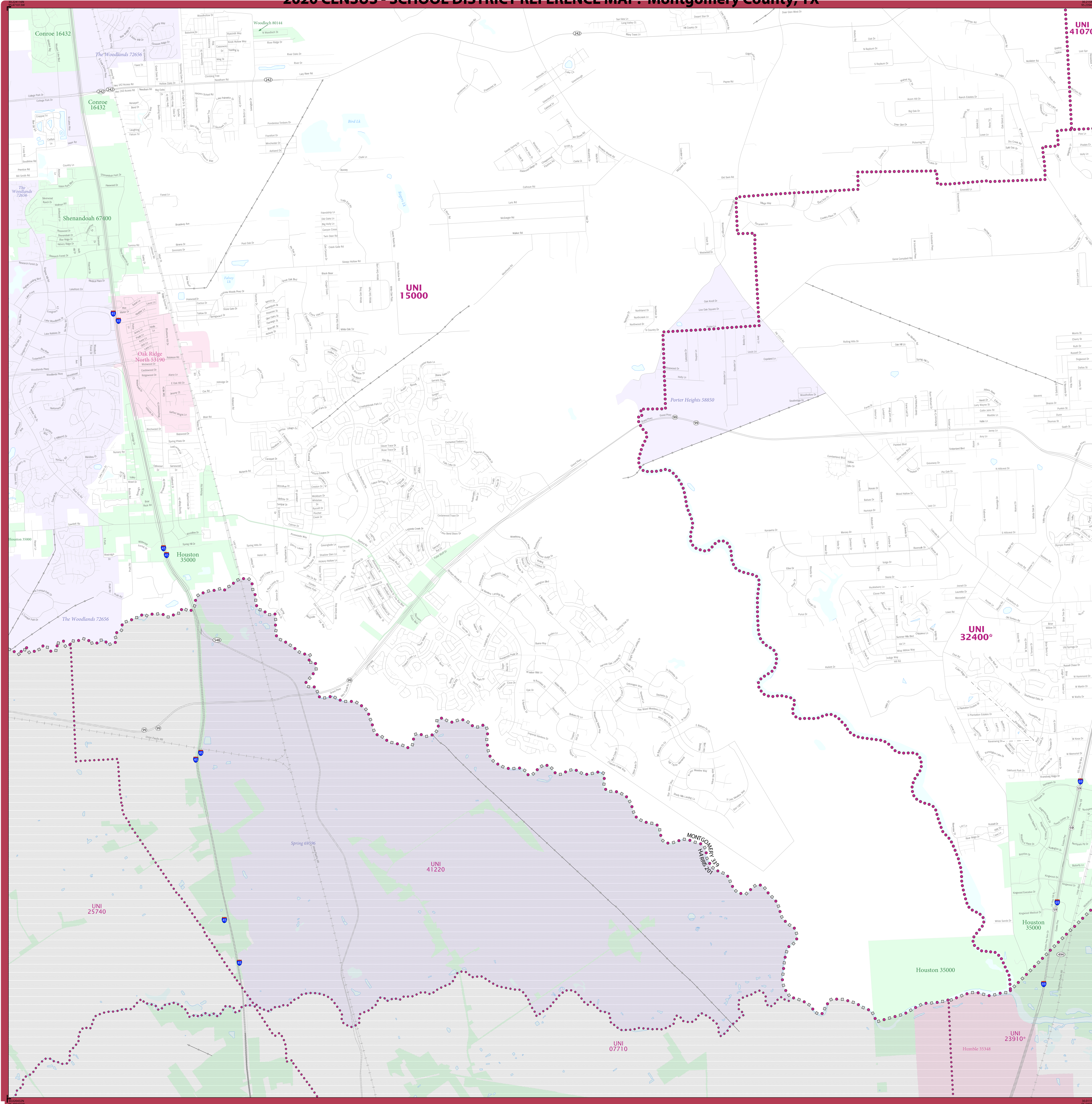
U.S. DEPARTMENT OF COMMERCE U.S. Census Bureau

Projection: Albers Equal Area Conic  
Datum: NAD 83  
Spheroid: GRS 80  
1st Standard Parallel: 27 36 51  
2nd Standard Parallel: 34 43 24  
Central Meridian: -100 04 35  
Latitude of Projection's Origin: 25 50 13  
False Easting: 0  
False Northing: 0

The plotted map scale is 1:3,100,000



# 2020 CENSUS - SCHOOL DISTRICT REFERENCE MAP: Montgomery County, TX



### LEGEND

SYMBOL DESCRIPTION	SYMBOL	LABEL STYLE
International	☆☆☆☆☆	CANADA
Federal American Indian Reservation	.....	L'ANSE RES 1880
Off-Reservation Trust Land	.....	T1880
State American Indian Reservation	.....	Tama Res 9400
Alaska Native Regional Corporation	.....	NANA ANRC 52120
State (or statistically equivalent entity)		NEW YORK 36
County (or statistically equivalent entity)	□□□□	ERIE 029
Minor Civil Division (MCD) <sup>1,2</sup>	○○○○○	Bristol town 07485
Consolidated City	○○○○○	MILFORD 47500
Incorporated Place <sup>3,4</sup>	.....	Davis 18100
Census Designated Place (CDP) <sup>3</sup>	.....	Incline Village 35100
Unified School District <sup>4</sup>	.....	UNI 03370
Secondary School District <sup>4</sup>	.....	SEC 99965
Elementary School District <sup>4</sup>	.....	ELM 02220

DESCRIPTION	SYMBOL	DESCRIPTION	SYMBOL
Interstate	.....	Water Body	.....
U.S. Highway	.....	Military	.....
State Highway or State Road	.....	National or State Park, Forest, or Recreation Area	.....
Other Road	.....	Inset Area	.....
4WD Trail, Railway, Alley, Walkway, or Ferry	.....	Outside Subject Area	.....
Railroad	.....		
Pipeline or Power Line	.....		
Ridge or Fence	.....		
Non-labeled Boundary or Feature Not Elsewhere Classified	.....		

Where international, state, county, and/or MCD boundaries coincide, the map shows the boundary symbol for only the highest-ranking of these boundaries.

Geographic area names are followed by either their FIPS or census code.

1 MCD boundaries are shown in the following states in which some or all MCDs function as general-purpose governmental units: Connecticut, Illinois, Indiana, Kansas, Maine, Massachusetts, Michigan, Minnesota, Missouri, Nebraska, New Hampshire, New Jersey, New York, North Dakota, Ohio, Pennsylvania, Rhode Island, South Dakota, Vermont, and Wisconsin. (Note that Illinois and Nebraska have some counties covered by nongovernmental precincts and Missouri has most counties covered by nongovernmental townships.)

2 A " " following an MCD name denotes a false MCD. A " " following a place name indicates that a false MCD exists with the same name and FIPS code as the place; the false MCD label is not shown.

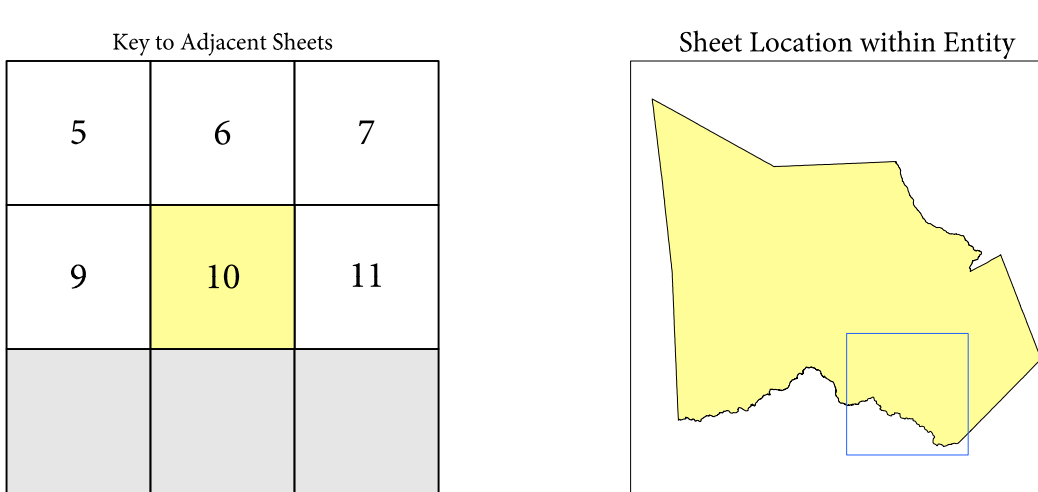
3 Place label color corresponds to the place fill color.

4 A " " following a label indicates that the school district is in more than one county.

Due to space limitations, some areas and features such as water bodies, parks, and roads may not be labeled.

### SUBJECT AREA SCHOOL DISTRICTS ON MAP SHEET

TYPE	CODE	NAME
UNI	15000	Conroe Independent School District
UNI	32400	New Caney Independent School District
UNI	41070	Splendora Independent School District

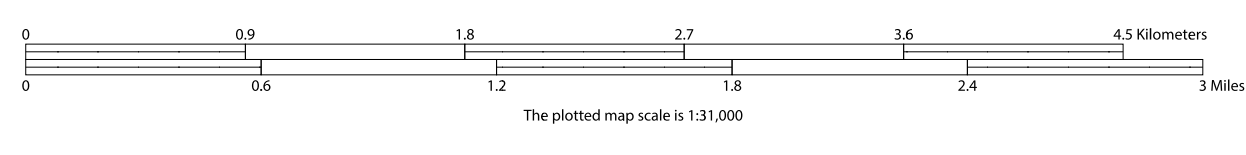


All legal boundaries and names are as of January 1, 2020. The boundaries shown on this map are for Census Bureau's statistical data collection and tabulation purposes only; their depiction and designation for statistical purposes does not constitute a determination of jurisdictional authority or rights of ownership or entitlement.

Geographic Vintage: 2020 Census (reference date: January 1, 2020)  
 Data Source: U.S. Census Bureau's MAINTIGR database (TIGER20)  
 Map Created by Geography Division: December 22, 2020

U.S. DEPARTMENT OF COMMERCE U.S. Census Bureau

Projection: Albers Equal Area Conic  
 Datum: NAD83  
 Spheroid: GRS 80  
 1st Standard Parallel: 27 36 51  
 2nd Standard Parallel: 34 43 24  
 Central Meridian: -100 04 35  
 Latitude of Projection's Origin: 25 50 13  
 False Easting: 0  
 False Northing: 0



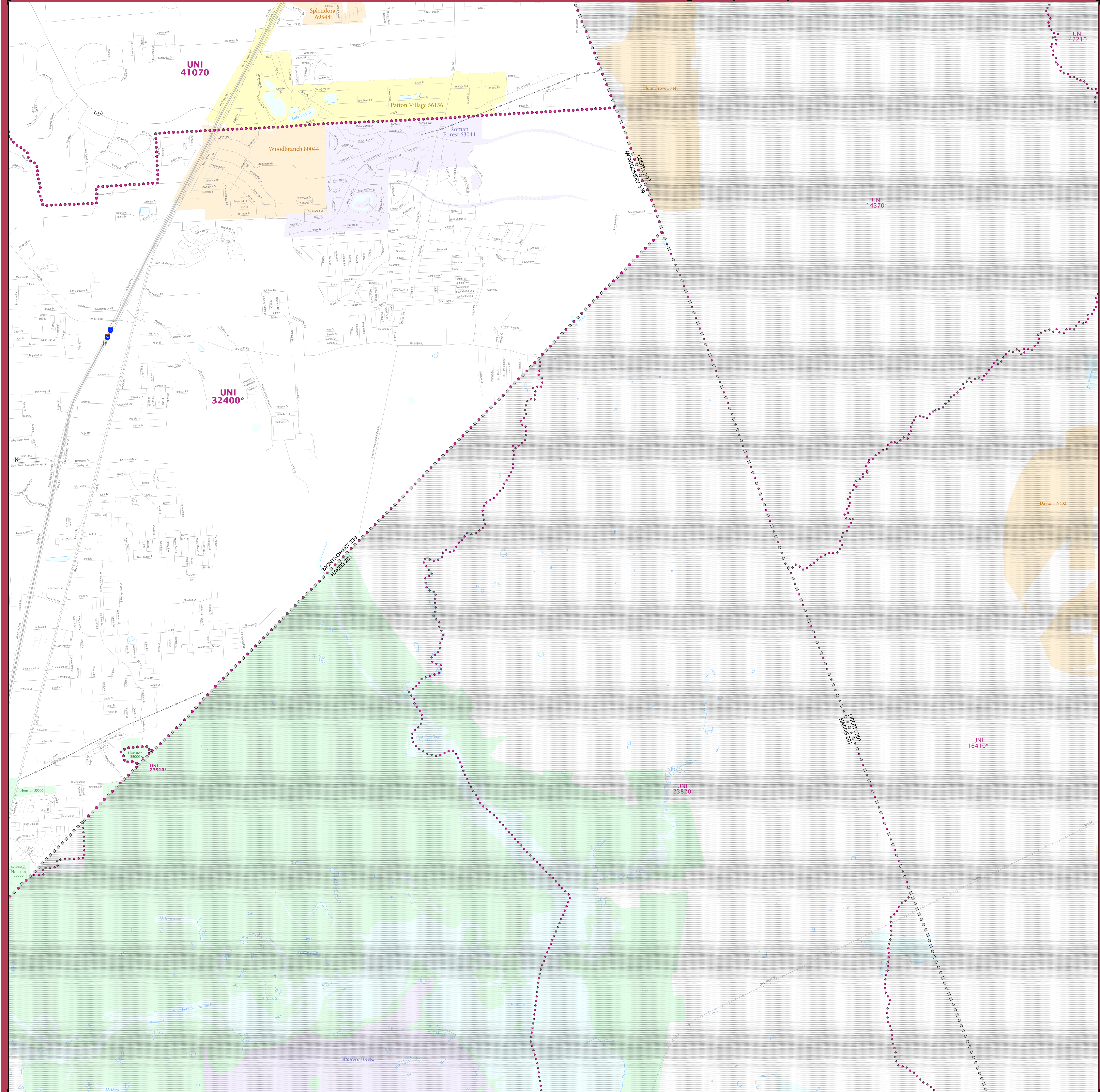
United States  
**Census  
 2020**

Sheet 10 of 11 PARENT sheets  
 Total Sheets: 12 (Index 1; Parent 11; Inset 0)

NAME: Montgomery County (339)  
 ENTITY TYPE: County or statistically equivalent entity  
 ST: Texas (48)

2020 CENSUS 50 REF MAP (PARENT)  
 Sheet ID: 25154833910

# 2020 CENSUS - SCHOOL DISTRICT REFERENCE MAP: Montgomery County, TX



### LEGEND

SYMBOL DESCRIPTION	SYMBOL	LABEL STYLE
International	☆☆☆☆☆	CANADA
Federal American Indian Reservation	■ ■ ■ ■ ■	L'ANSE RES 1880
Off-Reservation Trust Land	■ ■ ■ ■ ■	T1880
State American Indian Reservation	■ ■ ■ ■ ■	Tama Res 9400
Alaska Native Regional Corporation	+++++	NANA ANRC 52120
State (or statistically equivalent entity)		NEW YORK 36
County (or statistically equivalent entity)	□ □ □ □ □	ERIE 029
Minor Civil Division (MCD) <sup>1,2</sup>	○ ○ ○ ○ ○	Bristol town 07485
Consolidated City	○ ○ ○ ○ ○	MILFORD 47500
Incorporated Place <sup>3,3</sup>	■ ■ ■ ■ ■	Davis 18100
Census Designated Place (CDP) <sup>3</sup>	■ ■ ■ ■ ■	Inline Village 35100
Unified School District <sup>4</sup>	● ● ● ● ●	<b>UNI 03370</b>
Secondary School District <sup>4</sup>	— — — — —	<b>SEC 99965</b>
Elementary School District <sup>4</sup>	— — — — —	<b>ELM 02220</b>

DESCRIPTION	SYMBOL	DESCRIPTION	SYMBOL
Interstate	— 4 —	Water Body	■ ■ ■ ■ ■
U.S. Highway	— 2 —	Port Belvoir	■ ■ ■ ■ ■
State Highway or State Road	— 1 —	National or State Park, Forest, or Recreation Area	■ ■ ■ ■ ■
Other Road	— 0 —	Yosemite NP	■ ■ ■ ■ ■
4WD Trail, Stateway, Alley, Walkway, or Ferry	— 3 —	Inset Area	■ ■ ■ ■ ■
Railroad	— 5 —	Outside Subject Area	■ ■ ■ ■ ■
Pipeline or Power Line	— 6 —		
Ridge or Fence	— 7 —		
Nonlinear Boundary or Feature Not Elsewhere Classified	— 8 —		

Where international, state, county, and/or MCD boundaries coincide, the map shows the boundary symbol for only the highest-ranking of these boundaries.

Geographic area names are followed by either their FIPS or census code.

1 MCD boundaries are shown in the following states in which some or all MCDs function as general-purpose governmental units: Connecticut, Illinois, Indiana, Kansas, Maine, Massachusetts, Michigan, Minnesota, Missouri, Nebraska, New Hampshire, New Jersey, New York, North Dakota, Ohio, Pennsylvania, Rhode Island, South Dakota, Vermont, and Wisconsin. (Note that Illinois and Nebraska have some counties covered by nongovernmental precincts and Missouri has most counties covered by nongovernmental townships.)

2 A " " following an MCD name denotes a false MCD. A " " following a place name indicates that a false MCD exists with the same name and FIPS code as the place; the false MCD label is not shown.

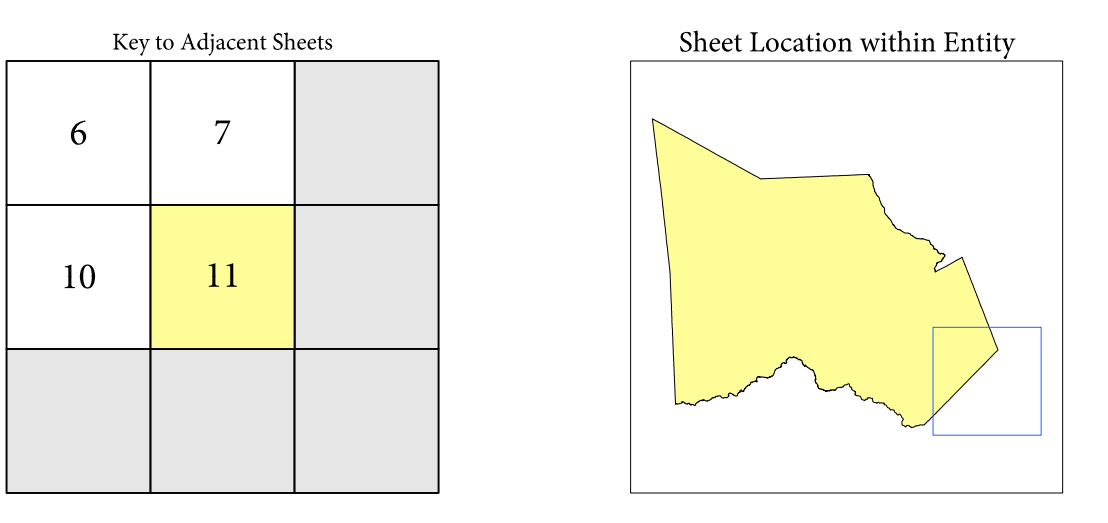
3 Place label color corresponds to the place fill color.

4 A " " following a label indicates that the school district is in more than one county.

Due to space limitations, some areas and features such as water bodies, parks, and roads may not be labeled.

### SUBJECT AREA SCHOOL DISTRICTS ON MAP SHEET

TYPE	CODE	NAME
UNI	23910	Humble Independent School District
UNI	32400	New Caney Independent School District
UNI	41070	Splendora Independent School District



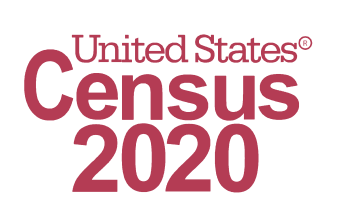
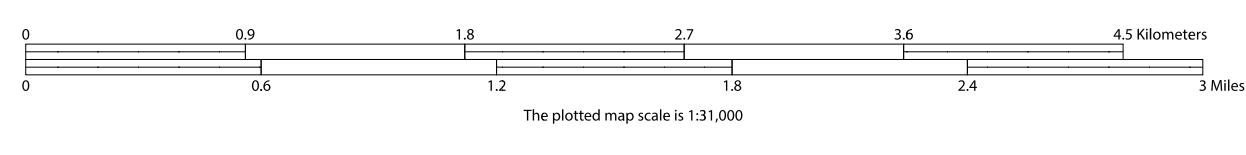
Sheet 11 of 11 PARENT sheets  
Total Sheets: 12 (Index 1: Parent 11; Inset 0)

All legal boundaries and names are as of January 1, 2020. The boundaries shown on this map are for Census Bureau's statistical data collection and tabulation purposes only; their depiction and designation for statistical purposes does not constitute a determination of jurisdictional authority or rights of ownership or entitlement.

Geographic Vintage: 2020 Census (reference date: January 1, 2020)  
Data Source: U.S. Census Bureau's MAINTIGER database (TAB20)  
Map Created by Geography Division: December 22, 2020

U.S. DEPARTMENT OF COMMERCE U.S. Census Bureau

Projection: Albers Equal Area Conic  
Datum: NAD 83  
Spheroid: GRS 80  
1st Standard Parallel: 27 36 51  
2nd Standard Parallel: 34 43 24  
Central Meridian: -100 04 35  
Latitude of Projection's Origin: 25 50 13  
False Easting: 0  
False Northing: 0



NAME: Montgomery County (339)  
ENTITY TYPE: County or statistically equivalent entity  
ST: Texas (48)

2020 CENSUS SD REF MAP (PARENT)  
Sheet ID: 251548330611