



5 March 2022

6th generation Peak Tram on track to launch by summer 2022

Photos download: <https://bit.ly/3hDq1TU>



Photo credit : Simon Nicol

The 6th generation Peak Tram is pictured conducting a test run ascending Victoria Peak on Saturday 5 March, 2022.

The first Peak Tram commenced service on 30 May 1888 and has undergone various phases of modernisation from coal-fired steam boilers in its earliest days to today's super-efficient electronic control system.

The 6th generation Peak Tram has been painted in a bespoke "Peak Tram Green", in a nod to its heritage and earlier 3rd and 4th generation tramcars, which were in service from 1948-1959 and 1959-1989 respectively.



PEAK TRAMWAYS COMPANY, LIMITED
山頂纜車有限公司

No.1, Lugard Road, The Peak, Hong Kong 香港山頂盧吉道壹號 TEL: (852) 2849 7654 | FAX: (852) 2849 6237 | EMAIL: info@thepeak.com.hk

www.thepeak.com.hk

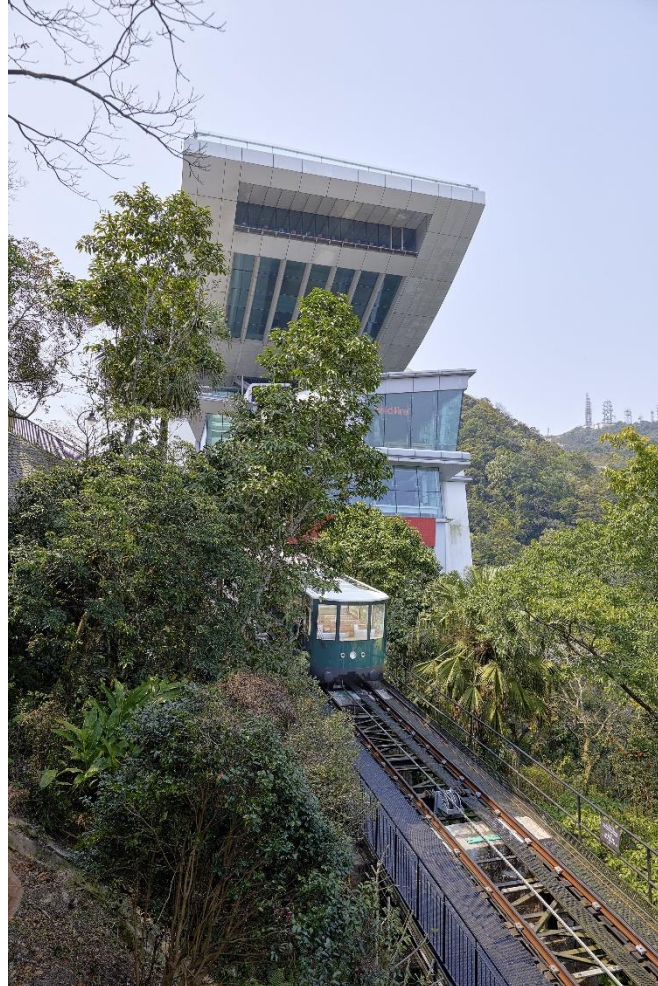


Photo credit : Simon Nicol

Manufactured in Switzerland by Garaventa, CWA and Frey, the new Peak Tram has increased its capacity by 75% and will carry 210 passengers compared to 120 previously, will have wider doors and step-free access for persons with a disability and larger panoramic windows for enhanced views of Hong Kong's stunning skyline. The Peak Tram has been meticulously designed as a modern classic to preserve the heritage of previous generations.



PEAK TRAMWAYS COMPANY, LIMITED
山頂纜車有限公司

No.1, Lugard Road, The Peak, Hong Kong 香港山頂盧吉道壹號 TEL: (852) 2849 7654 | FAX: (852) 2849 6237 | EMAIL: info@thepeak.com.hk

www.thepeak.com.hk



Photo credit : Simon Nicol

Owned and operated by The HongKong and Shanghai Hotels, Limited, the latest generation Peak Tram is part of a multimillion upgrade project which includes fully replaced haulage and control systems, new track rails and strengthened foundations, and significantly refurbished termini with enhanced queuing capacity.

The date of the launch and more details will be announced in due course.

###



PEAK TRAMWAYS COMPANY, LIMITED
山頂纜車有限公司

No.1, Lugard Road, The Peak, Hong Kong 香港山頂盧吉道壹號 TEL: (852) 2849 7654 | FAX: (852) 2849 6237 | EMAIL: info@thepeak.com.hk

www.thepeak.com.hk



About the Peak Tram and The Peak Tower

The Peak Tram is one of the world's oldest and most famous funicular railways. Opened in May 1888, the double reversible funicular railway, as it is technically known, rises from 48m to 396m above sea level along a 1.4 m track with a gradient of between 6 to 26 degrees. As one of Hong Kong's most popular tourist attractions, the Peak Tram terminates at The Peak Tower shopping and entertainment complex, which has some of the world's greatest panoramic views.

The Peak Tower is one of Hong Kong's most recognisable icons and is a leading tourist destination. The Peak Tower also offers exciting signature restaurants with stunning views, as well as a number of innovative casual dining outlets. A unique festival-market-style shopping arcade and spectacular special-effects lighting, both inside and out, also serve to make The Peak Tower Hong Kong's the most compelling leisure destination for residents and tourists alike.

Located at 428 metres above sea level, Sky Terrace 428, the highest viewing terrace in Hong Kong offers stunning 360-degree spectacular panoramic views of the vibrant city – from the stunning cityscape to the tranquillity of green landscape, across Victoria Harbour and the South China Sea.

About The Hongkong and Shanghai Hotels, Limited (HSH)

Incorporated in 1866 and listed on the Hong Kong Stock Exchange (00045), The Hongkong and Shanghai Hotels, Limited is the holding company of a Group which is engaged in the ownership, development, and management of prestigious hotels and commercial and residential properties in key locations in Asia, the United States and Europe, as well as the provision of tourism and leisure, club management and other services. The Peninsula Hotels portfolio comprises The Peninsula Hong Kong, The Peninsula Shanghai, The Peninsula Beijing, The Peninsula Tokyo, The Peninsula New York, The Peninsula Chicago, The Peninsula Beverly Hills, The Peninsula Paris, The Peninsula Bangkok and The Peninsula Manila. Projects under development include The Peninsula London and The Peninsula Istanbul. The property portfolio of the Group includes The Repulse Bay Complex, The Peak Tower and St. John's Building in Hong Kong; The Landmark in Ho Chi Minh City, Vietnam and 21 avenue Kléber in Paris, France. The clubs and services portfolio of the Group includes The Peak Tram in Hong Kong; Quail Lodge & Golf Club in Carmel, California; Peninsula Clubs and Consultancy Services, Peninsula Merchandising, and Tai Pan Laundry in Hong Kong.



PEAK TRAMWAYS COMPANY, LIMITED
山頂纜車有限公司



For further enquiries, please contact the following persons or visit our website www.thepeak.com.hk:

Peak Tramways Company, Limited

Jasmine Yu

Tel: (852) 2849 0819

Email: jasmineyu@peninsula.com

Fax: (852) 2849 6237

Catherine Lam

Tel: (852) 2849 0831

Email: catherinelam@peninsula.com

Fax: (852) 2849 6237

Strategic Communications Consultants Limited

Veronica Li

Tel: (852) 2114 4945

Email: veronica.li@sprg.com.hk

Fax: (852) 2114 0880

Andico Tsui

Tel: (852) 2114 4346

Email: andico.tsui@sprg.com.hk

Fax: (852) 2114 0880



PEAK TRAMWAYS COMPANY, LIMITED
山頂纜車有限公司