



CRIME SUMMARY

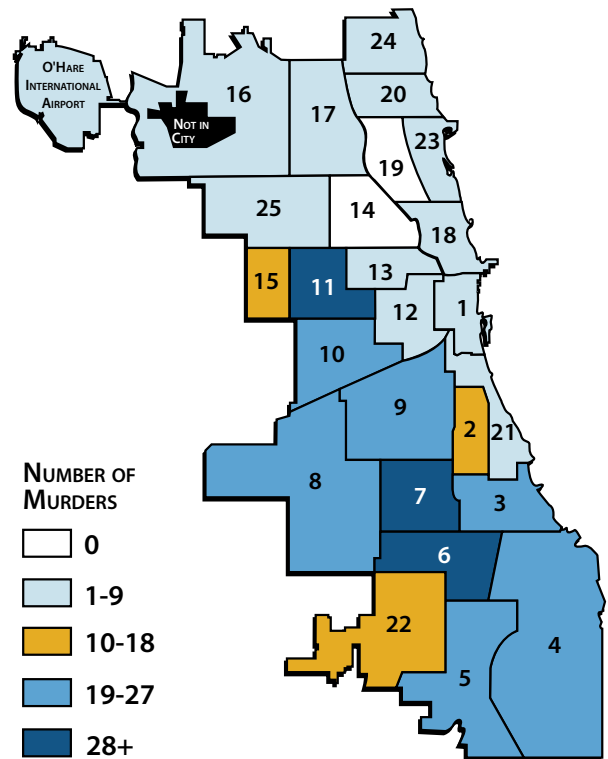
CHICAGO • 2010

• January-August 2010 •

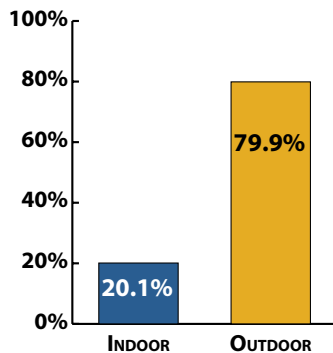
Index Crime

	Jan-Aug 2009	Jan-Aug 2010	% Change
Murder	308	313	1.6 %
Criminal Sexual Assault	1,017	922	-9.3 %
Robbery	10,517	9,070	-13.8 %
Aggravated Assault	4,036	3,525	-12.7 %
Aggravated Battery	7,048	6,631	-5.9 %
Burglary	16,967	16,723	-1.4 %
Theft	53,103	49,681	-6.4 %
Motor Vehicle Theft	9,732	11,844	21.7 %
Arson	421	356	-15.4 %
Violent Property	22,926	20,461	-10.8 %
TOTAL	103,149	99,065	-4.0 %

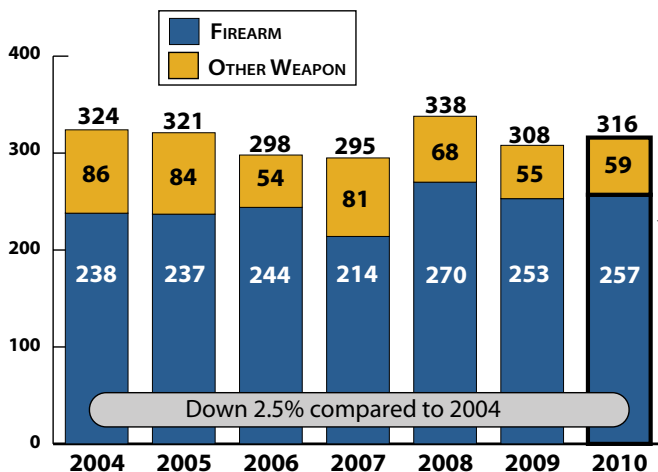
January-August 2010 Murder Totals by District



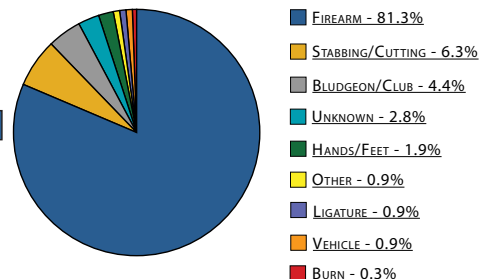
January-August 2010 Murder Location



January-August Murder Totals: 2004-2010



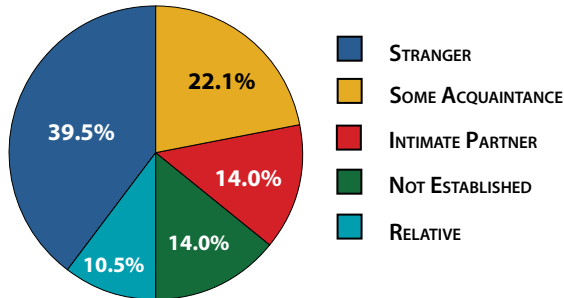
January-August 2010 Murder by Weapon Type



NOTE: EFFECTIVE 2010, A CHANGE TO THE DATA SYSTEM MADE IT POSSIBLE TO RECORD MULTIPLE WEAPON TYPES. THERE WERE THREE 2010 MURDERS IN WHICH MULTIPLE WEAPON TYPES WERE RECORDED.

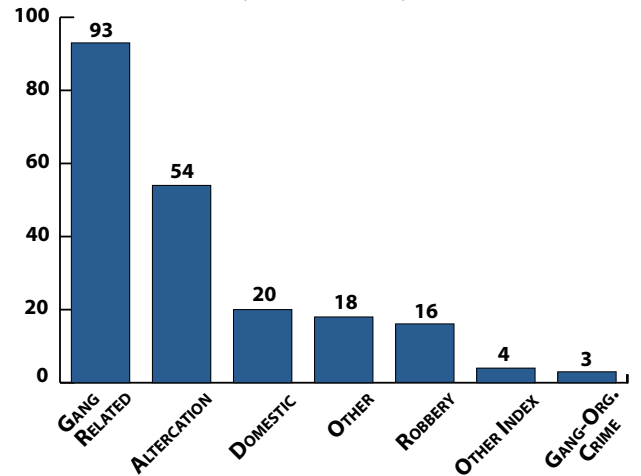
CRIME SUMMARY

January-August 2010
Murder Victim's Relationship to Offender*



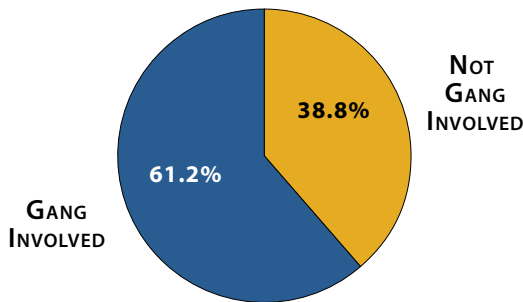
* Cleared murders only.

January-August 2010
Murder Totals by Motive*
(where determined)



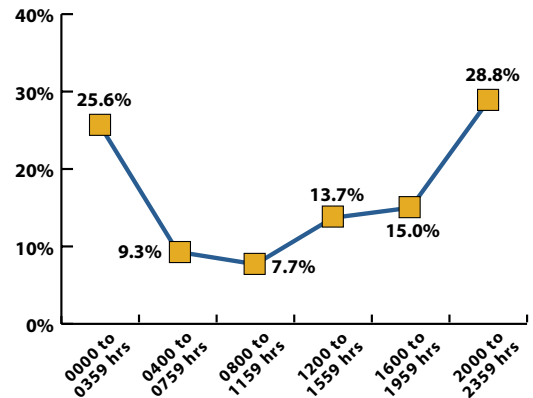
* 105 murders had undetermined motives

January-August 2010
Murder was Gang-Involved*

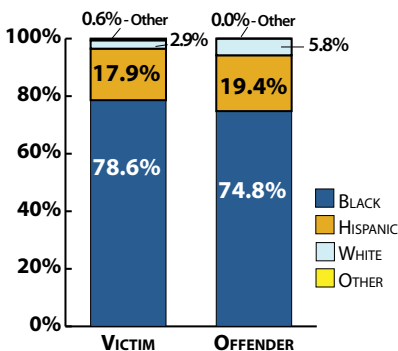


* Defined as either involving a victim or offender with known gang association or the incident was gang related.

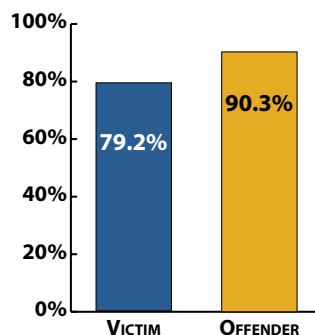
January-August 2010
Time of Murder Injury



January-August 2010
Murder Victim and Offender
Race



January-August 2010
Murder Victim and Offender
Prior CPD Record



January-August 2010
Age of Murder Victim

