

Rhode Island School of Design
USPS 075-040
RISD VIEWS
Two College Street
Providence, RI
02903 - 2784 USA

Periodicals
US Postage
PAID
Providence RI



risd

annual fund

THE RISD EXPERIENCE

“What makes RISD special are the people who you find here...because RISD accepts people who will make a worthwhile contribution, people who have new and different ideas, and people who are into building a community that fosters artistic expression and artistic adventuring. It’s a great place to meet like-minded people who push you to think about life and yourself and what you want to contribute to the world in a completely different way.”

— NERIMA OCHWADA '07 APPAREL DESIGN

Your consistent support of the RISD Annual Fund helps to ensure the best possible art and design experience for students like Nerima - so that they can fulfill their dreams. Gifts to the Annual Fund make a critical difference to the quality of our academic programs — from upgraded technology to scholarship aid to enhanced studio spaces and other significant needs. Please give as generously as you can, and remember: all gifts are important and valued. RISD’s fiscal year ends on June 30th, so please make your gift today at www.risd.edu/give.

www.risd.edu/give



risd views

the mandle years | spring 2008

inside



risd views
USPS 075-040
Volume 19, Number 1, April 2008
Issues of *risd views* are published four times a year in October, January, April and July by RISD Communications + Design, Two College Street, Providence, RI 02903-2784 USA
Periodicals postage paid at Providence, RI
POSTMASTER: Please send address changes to the RISD Alumni + Career Services Office, Two College Street, Providence, RI 02903-2784 USA

departments

2
presidential search

4
hillside
what's up on campus

33
readers' views
letters, comments, addenda

34
news from alumni relations
updates on clubs, initiatives + the association

37
portfolio
news of alumni

48
graduate portfolio
news from grad program alumni

52
alternative views
insights, attitudes, reflections

features

14
the mandle style
Together, Roger and Gayle Mandle have shaped RISD's culture through their gracious manner and unique personalities.

18
15 years of progress
Thanks to President Mandle's leadership, the RISD community has accomplished a lot in the last 15 years. This timeline highlights just a few of the many advances made during this period.

28
community impact
Everyone involved with RISD since 1993 has witnessed many positive changes. Here, various members of the community reflect on the impact of Roger Mandle's presidency.

publishing director
Liz O'Neil
editor
Liisa Silander
production coordinator
David H. Coulter '84 GD
designers
David H. Coulter '84 GD
Catherine McGuinness
Candace Cain Seel
writers
Rob Albanese
Jane Bernstein
Anna Cousins
Liisa Silander

e-mail risdviews@risd.edu
fax 401 454-6351
phone 401 454-6349
web www.risd.edu/publications_views.cfm
risd 401 454-6100
post Liisa Silander, risd views
Two College Street
Providence, Rhode Island
02903-2784 USA

RISD COMMUNICATIONS + DESIGN
28,000 | MERIDIAN PRINTING
PRINTED ON ROLLAND OPAQUE,
A 70# RECYCLED TEXT WITH 30% POST-INDUSTRIAL FIBER, MANUFACTURED USING BIOGAS ENERGY AND CERTIFIED ENVIRONMENT CHOICE AND FSC MIXED SOURCES

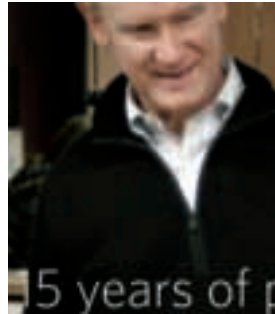
risd views is pleased to feature the work of the following guest and in-house designers:



Cover
The ornate ceiling of the Fleet Library at RISD – a welcoming academic facility the president helped envision and worked hard to realize – offers an appropriate backdrop to a sampling of images that capture **Roger Mandle** in action and suggest the far-reaching impact of his presidency. More coverage of the legacy of RISD's 15th president is available in this issue and online at www.risd.edu/mandle.



Taro Yumiba
pages 14-17
After earning a BA in Philosophy from Jochi University in Tokyo, **Taro Yumiba '08 GD** came to RISD as a transfer student in 2006. In the last two years he has interned at *Metropolis* magazine in New York and moonlighted doing design work for various administrative offices on campus. Once he graduates in May, Taro is open to moving just about anywhere to pursue a career in graphic design.



David H. Coulter
pages 18-27
Dave Coulter '84 GD is the director of Graphic Design Services in RISD's division of Communications + Design. As a big fan of timelines, he knew all along that fitting 15 years onto 10 pages would be a challenge, but says, "Isn't that what RISD's all about?"



Karen + Jim Healey
pages 28-31
Karen (Bruno) '90 GD and **Jim Healey BArch '91** run a studio known as Peapod Design (www.peapoddesign.com) in New Canaan, CT. Specializing in graphic design work for educational institutions, they produce viewbooks, brochures, annual reports, magazines and websites for secondary schools and colleges in the New England region.



President Mandle traveled far and wide on RISD's behalf, developing relationships with colleges and universities in China, gathering input and ideas from alumni, and closer to home, collaborating with RISD's host city and its current mayor, David Cicilline.

parting thoughts

Somehow I feel I'm ready now — ready to jump into the deep end of the pool after years of practicing at the shallow end. Countless hours of coaching from my friends and critics, lap after lap, swimming side by side with students here has given me the confidence that I can make it. Yet, I am almost shivering at the thought that, after seeming so far off when I first announced I would be leaving, the time has come and I am about to take the plunge.

In my RISD Convocation remarks last fall, I told members of the Class of 2008 that I would be joining them in walking across the stage to graduate this May. With that in mind, I have been thinking about what my time here has meant to me. Every moment in the future will undoubtedly resonate with remembered experiences from RISD. I simply see differently now, and therefore, I think differently, too.

RISD offers a collective wisdom that propels us toward our own destiny. Our extraordinary curriculum and lifestyle have been well honed over generations — by faculty, students, museum curators, Board members, alumni, parents and others who form the wider RISD community. Together, we shape RISD's ethos, which combines the truths we see, the learned history of the arts and humanities, and the lessons gleaned from the materials we use to make art and design. This ethos must be protected so that every person who is touched by RISD leaves with strengthened values and a commitment to humanity.

Wherever my life leads, I will remember lessons from RISD through memories such as these:

- the student who challenged my long-held notion of 17th-century Dutch still life painting in her seminar report — and opened my eyes to a new way of seeing them;
- the faculty member who showed me the back alleys of Rome and taught me to rethink their history;
- the student who lined up dozens of spanking new white porcelain toilets on the RISD Beach one morning, awakening me to a new view of our campus;
- the alumna who sent me a copy of a newly released book about her work, which I loved;
- the parent/trustee who pressed us to broaden our scholarship funding while committing his own resources to help meet that goal;
- the painting alumnus who told me about the terminal cancer he suspected was triggered by longtime use of hazardous art materials, which led to the creation of our Environmental Health and Safety program;
- the students who camped out in my office (and helped me with my work) to protest lack of studio space in Photography;
- the RISD groundskeeper who taught me how to grow dinner plate-sized dahlias.

There are many more images rumbling around in my head — all signaling the wisdom of our RISD family, which offers unsurpassed benefits to its members. I am grateful for the experiences I have had with these and so many other members of the RISD community. I also want to thank my wife and partner, Gayle, whose enthusiasm for our work at RISD has equaled my own, and whose brilliant creativity has infused every aspect of our lives here — and touched others as well. The two of us have received so much more from you than we ever expected, and are deeply thankful.

Soon RISD will welcome a great new leader. His success will be our success; I hope that our community embraces John Maeda with the same affection and support that I have received over so many years. His brilliance will reward our good judgment in choosing him.

And yes, I am ready for that first contact with the chilly water at the deep end — especially knowing that swimming alongside me will be other RISD people intent on reaching their own creative destinies and making a big difference along the way.

Roger Mandle, *president*

risd

presidential search



On December 21, 2007, we announced the appointment of **John Maeda**, now the associate director of research at the MIT Media Lab, as RISD's next president. We believe John will be a bold, innovative and exciting president and will enhance RISD's role in helping to shape and inform art and design in this century. With creativity and innovation more important than ever, RISD has an obligation to play a leadership role in the world of art and design, nationally and internationally.

John's selection represents months of diligent and thoughtful work on the part of our Presidential Search Committee. I cannot say enough about the extraordinary nature of this committee's efforts and the perceptiveness, commitment and integrity of its members. In accepting the committee's recommendation and unanimously appointing President Maeda, the Board of Trustees did so confident that he will help us to realize our aspirations for RISD's future.

I hope that you will extend your congratulations and support to John and give him a hearty welcome when he begins his new tenure here on June 2, 2008.

Merrill W. Sherman

RISD Board of Trustees Chair and Presidential Search Committee Chair



RISD'S PRESIDENTIAL SEARCH COMMITTEE

TRUSTEE REPRESENTATIVES

Merrill W. Sherman

Chair, Presidential Search Committee
Chair, RISD Board of Trustees
President and CEO, Bank Rhode Island

Stuart J. Murphy *

Vice Chair,
Presidential Search Committee
Vice Chair, RISD Board of Trustees
children's book author,
visual learning specialist

John Beug

RISD Trustee
Senior Vice President,
Warner Music Group

Clara M. Dale *

Chair Emerita,
RISD Board of Trustees

Richard Haining

RISD Trustee

William R. Hammer *

RISD Trustee
President, HKT Architects Inc.

Stephen L. Key

RISD Trustee
Key Consulting LLC

Margaret A. Williams

RISD Trustee
Partner, Griffin Williams
Critical Point Management

Carolina Y. C. Woo *

RISD Trustee
Principal, CW Group

MUSEUM BOARD OF GOVERNORS

Mary Ann (Toots) Zynsky *

RISD Museum Board of
Governors, glass artist

FACULTY REPRESENTATIVES

Mairéad Byrne

Associate Professor of English
Division of Liberal Arts

Gabriel Feld

Professor of Architecture
Division of Architecture + Design

Todd Moore *

Associate Professor
Division of Foundation Studies

ACADEMIC ADMINISTRATION

Rosanne Somerson *

Professor / Department Head
Furniture Design

RISD MUSEUM

Judith Tannenbaum

Richard Brown Baker Curator
of Contemporary Art

ADMINISTRATION

Candace Baer

Associate Vice President
of Human Resources

Candace Cain Seel

President, Staff Council

STUDENT REPRESENTATIVES

Angela Manes-Muir

Class of 2008
President, Student Alliance

Tom Weis

Class of 2008
Graduate Student Representative

* indicates RISD alumnus/na





“It is my deepest honor to be selected by the RISD Presidential Search Committee and to receive the unanimous approval of the Board of Trustees.... I look forward to working with the incredibly inspiring and creative RISD community to realize the possibilities for the world’s first truly 21st-century university of art and design.”

John Maeda is a world-renowned artist, designer, innovator and academic whose work transcends the artificial divide between art, science and the humanities, suggesting instead a new synthesis in thinking. His career reflects his philosophy of humanizing technology.

As a digital artist, Maeda has exhibited in well-received solo shows in London, New York, Paris and Tokyo. For *Maeda: MySpace*, an exhibition held last year in London, he created a sculpture in the shape of a fish, made of 16 silver iPods displaying an ongoing cycle of 60,000 of his own visual memories flitting by. His work is in the permanent collections of MoMA, the San Francisco Museum of Modern Art, the Cartier Foundation in Paris and the Cooper-Hewitt National Design Museum, where he is a trustee, has won the National Design Award, and recently created a Google gadget showcasing the work of 2007 winners. Among his many other activities in the design realm, he has developed innovative projects for major corporations such as Cartier, Google, Philips, Reebok and Samsung, among others.

Maeda travels and lectures throughout the world, and since 1996 has been a professor of media arts and sciences at MIT, where he also oversees research in the Media Lab. His most recent book, *The Laws of Simplicity*, has been translated into 14 languages and hailed as an important and eminently readable guide for our times.

A native of Seattle, Maeda earned a bachelor’s in Computer Science and a master’s in Electrical Engineering from MIT, followed by a PhD in Design Science from the University of Tsukuba Institute of Art and Design in Japan and an MBA from Arizona State University.

For a list of articles on and interviews with the president-elect, go to www.risd.edu/president/coverage.html. View videos of him at www.risd.edu/president.

overheard

“Every day I make an effort to go toward what I don’t understand. This wandering leads to the accidental learning that continually shapes my life.”

Yo-Yo Ma, RISD 2008 honorary degree recipient, delivering a “This I Believe” commentary on NPR’s *All Things Considered* (3.10.08)

RISD’s *Graduate Thesis Exhibition 2008* opens on May 20 and continues through June 1 at the Rhode Island Convention Center, the second year it is being held in this large public venue downtown. More than 120 students receiving graduate degrees in 14 disciplines will show their conceptually challenging and technically sophisticated work. For information on hours, the artists and images of their work, visit www.risd.edu/graduate after mid-May.



David O'Connor

commencement 2008

At Commencement on May 31, approximately 497 undergraduates and 167 graduate students are expected to receive their hard-earned diplomas. As part of the outdoor ceremony, RISD also confers honorary Doctor of Fine Arts degrees on exceptional individuals who have made groundbreaking contributions to the world of art and design. This year the following four people will join in the festivities and accept honorary degrees: musician/performance artist **Laurie Anderson**, who will also deliver the Commencement Address; cellist, arts activist and artistic director of the Silk Road Ensemble **Yo-Yo Ma**; photographer, painter and Pop Art pioneer **Ed Ruscha**; and art critic **Roberta Smith**. For more on the ceremony and background on the honorary degree recipients, go to www.risd.edu/risd_commencement.cfm.

silk road in residence

The partnership between RISD and **Yo-Yo Ma**’s Silk Road Project is continuing this spring with a residency and performances highlighting interdisciplinary artistic expression and cross-cultural collaboration. Over a series of three campus visits, Silk Road Ensemble storyteller **Ben Haggarty** and several Ensemble members have been working with students in the course *Folktales in the Digital Age*, which combines writing, picture-making, music and performance. The Silk Road Project, founded by Ma in 1998, is a not-for-profit arts and educational organization that acts as a catalyst for promoting innovation and learning through the arts. For more on this year’s residency, go to www.risd.edu/campus_initiatives_silkroad.htm.

ken bain speaks at risd

On April 25 **Ken Bain**, the noted educator and scholar of teaching, will speak about contemporary issues in higher education in a public lecture at 7pm in the RISD Auditorium. Bain is the director of the Teaching and Learning Resource Center at Montclair [NJ] State University and author of *What the Best College Teachers Do* (2004, Harvard University Press), a widely read and admired book that makes a case for student-centered instruction (and features RISD’s own Landscape Architecture Critic **Charlie Cannon** as one of the “best”).

may 1 dedication of mandle building

On Thursday, May 1, RISD’s Board of Trustees will officially dedicate the college’s landmark property at 15 Westminster Street as **The Roger Mandle Building: The Rhode Island School of Design Living and Learning Center**. The recently renovated facility across the river from the RISD Auditorium includes Portfolio Café, the Fleet Library at RISD and housing for more than 500 students. The entire building is being dedicated in honor of **President Mandle**, who championed the acquisition and award-winning renovation of this 12-story facility to address the expansion needs of the library and more than double the residential space for students on campus. The festivities get underway with cocktails and hors d’oeuvres at 5:30 pm, followed by a brief speaking program. In addition to local dignitaries, **Vartan Gregorian**, president of the Carnegie Corporation of New York and former president of Brown University, will address the crowd. To read the press release announcing this honor, go to www.risd.edu/email/mandlebuilding/.

Professor **Sven Arntzen** of the Department of Humanities and Cultural Studies at Telemark University in Norway is teaching at RISD this spring as the American-Scandinavian Foundation Visiting Lecturer. He is teaching a course on alternative conceptions of environmental preservation in which human life and activity are in sync with nature.

Continuing Education faculty member **Brent Bacheider** ’89 SC recently won a National Golden Kooley Award from the Roller Skating Association International for best color flyer and promotional mailer piece.

In March **Dawn Barrett**, professor and dean of Architecture + Design, participated in the LAAB accreditation review for the MLA program at the University of Illinois Urbana-Champaign.

Last fall **Mary Bergstein**, professor and head of the History of Art and Visual Culture department, discussed Freud’s erotic attachment to Italy in “Roman Fever,” a paper she delivered at the annual meeting of the German Studies Association in San Diego.



athenas honor excellence

On April 10 RISD will celebrate outstanding achievements in art and design at the Athena Awards 2008, which will honor the contributions of eight remarkable individuals. Among those receiving awards are: **Roger and Gayle Mandle**, who will be honored with the Helen Adelia Rowe Metcalf Award for Lifetime Achievement; architect/designer/conceptual artist **Meejin Yoon**, recipient of the RISD/Target Emerging Artist Award in partnership with *surface* magazine; designer **Ayse Birsal**, winner of the Athena Award for Excellence in Furniture Design; architectural glass master **James Carpenter '71 IL**, the Athena Award for Excellence in Design; sculptor/installation artist **Roni Horn '75 SC**, the Athena Award for Excellence in Fine Art; TED curator **Chris Anderson**, the Athena Awards for Arts Patronage; and textile designer **Mark Pollack '76 TX**, the Athena Award for Alumni Achievement.

The festive awards presentation will take place over cocktails at the Martha Stewart Living Omnimedia headquarters at 601 West 26th Street. For more on the Athena Awards program, this year's recipients and post-event photos, check www.risd.edu/risd_awards.cfm.

first diversity awards on the horizon

For the first time at RISD, the Office of Multicultural Affairs (OMA) has teamed up with Human Resources and Academic Affairs to recognize the contributions of individuals at RISD whose work "builds and strengthens our community through acknowledging human differences," says OMA Director **Tony Johnson '93 SC**. A Diversity Awards Selection Committee comprised of students, faculty, staff and alumni is currently considering nominees proposed by the campus community. On May 6 the first three recipients of the awards – one student, one faculty member and one staff member – will be formally announced at a Diversity Awards banquet. For information on the winners and their contributions once the announcement has been made, go to www.risd.edu/diversityawards.cfm.



courtesy of Tess Giberson, photo by Erik Gould

remembering virginia lynch

At its meeting on February 2, RISD's Board of Trustees passed a resolution that "gratefully acknowledges the exceptional contributions of **Virginia M. Lynch** to RISD and the community." The longtime RISD trustee, Rhode Island gallery owner and arts advocate died on Thursday, December 6, 2007, at age 92.

"The RISD community has lost one of our greatest friends," noted President **Roger Mandle**. A force at RISD for three decades, she served as a trustee from 1980–98 and was a generous donor to the college and museum. Lynch was a passionate advocate for contemporary art and the education of future artists, establishing an endowed scholarship fund at RISD to support greater diversity in the student body. She also gave several works of art to the RISD Museum of Art, including photographs by the late RISD Professor Emeritus **Harry Callahan** and paintings by **Bryson Burroughs**, **Chuck Close** and the late **Elaine Anthony '66 PT**. In 1997 she was awarded an honorary degree from RISD and in 2003 she earned a Pell Award from the State of Rhode Island for Distinguished Service to the Arts.

"Virginia felt very strongly about the school, and the school felt very strongly about her," notes Professor Emeritus **Tom Sgouros '50 IL**. "She was a force, and the New England art scene was greatly affected by her presence." For more comments from the RISD community about her impact, go to www.risd.edu/VLynch. Memorial contributions may be made to the Virginia Lynch Endowed Scholarship Fund at www.risd.edu/give.

Soft Wall (2007, Tyvek and industrial felt, 7-1/2 x 18"), a recent museum acquisition created by molo design in Vancouver, Canada, anchors *Evolution/Revolution: The Arts and Crafts in Contemporary Fashion and Textiles*, which continues through June 15 at the RISD Museum of Art. Organized by Curator of Costume and Textiles **Joanne Ingersoll**, the show brings together the work of 20 contemporary artists, architects and designers who share a commitment to quality of life over mass branding and to innovative design through experimentation with new technology. Among the other designers whose fascinating work is featured are Hil Driessen, **Tess Giberson '96 AP** (see dresses pictured), **Claudy Jongstra** and **Issey Miyake**.

Rachel Berwick '84 GL, professor and head of the Glass Department, has been awarded a Smithsonian Artists Research Fellowship for her project *Stories of Migration*. In April her installation *may-por-e'* traveled with the Aldrich Museum exhibition *Voice and Void* to the Taxispalais in Austria.

Hansy Better, assistant professor of Architecture, and Architecture Critic **Anthony Piermarini** recently collaborated with the RISD alumni firm Najmi Bilgrami Collaborative in Karachi, Pakistan on the design for the Pakistan Pavilion for the World Expo 2010, which will take place in Shanghai, China.

Painting Critic **Dike Blair** exhibited work earlier this spring at D'Amelio Terras in NYC and Mary Goldman Gallery in Los Angeles.

Lecturer **Melinda Bridgman** is a first-place professional winner of the Blair L. Sadler International Healing Arts Competition. The award recognizes her work with the ongoing course *Art as Source of Healing*.

Illustration Critic **Jason Brockert '94 IL** received a grant from the Rhode Island State Council on the Arts to start a web log called "A Year in Art" (ayearinart.com).

Painting Professor **Donna Bruton** exhibited recent oils in *Timeline*, a group show held last winter at the Dell Pryor Gallery in Detroit.

Last October **Mairéad Byrne**, associate professor of English, read poetry and presented a paper at *SoundEye West: Poetry Between Languages*, a conference at the University of Southern California. Several of her poems have been published recently, including "What Is a Cell-Phone?" in *American Poetry Review* (9-10.07) and "America" and "Bio" in *Lit* (10.07).

In his new book *Painting for the Gods* (November 2007, Africa World Press), **Bolaji Campbell**, assistant professor of Art and Architectural History, focuses on indigenous painting traditions found on ancestral shrines of Yoruba divinities in southwestern Nigeria.



RISD MFA
RATED #1

LOCAL Architecture Research Design, the studio co-founded by Landscape Architecture Critic **Charlie Cannon**, won a 2007 Collaborative Innovation Leader Award from *Providence Business News*.

Jim Cole, senior critic in Furniture Design, exhibited work in the fall exhibition *Structure et Surface* at the Harris Lieberman Gallery in NYC; his work was also shown by Magen H Gallery at Design Miami/Basel.

Assistant Professor **Liz Collins '91 TX/MFA '99** was a panelist at "Crafting Protest," a discussion of the political and social power of craft held in January at The New School in New York. Her knit designs are featured in Gary Graham's fall 2008 apparel collection.

Assistant Professor of Foundation Studies **Deborah Coolidge MFA '80 CR** showed *new works* last winter at 5 Traverse Gallery in Providence.

Industrial Design Critic **Kat Darula MID '03** is part of a team at Item New Product Development looking at the emergency department critical care environment in order to improve doctor and patient experience during life-saving moments.

The Getty Research Institute has published *China on Paper: European and Chinese Works from the Late Sixteenth Century to the Early Nineteenth Century* (2007), co-edited by **Paola Demattè**, associate professor of Asian art and archaeology. An associated exhibition was on view last winter at the Getty Research Institute.

A packaging design by Senior Illustration Critic **Susan Doyle-Shedd '81 IL/MFA '98 PT/PR** was selected for publication in the *Print Regional Design Annual*. Her client for the project was the jewelry designer **Robert Lee Morris**.

Revenant by Sculpture Professor **Ellen Driscoll** was installed recently at the Nippon Ginko Bank in Hiroshima.

Foundation Studies Critic **Joshua Enck MFA '03 FD** exhibited wood and metal furniture and sculpture in *Interpreting the Vernacular Landscape*, a three-person show held last winter at Edinboro University.

best in class

RISD is the top graduate school of art and design in the country, according to *US News & World Report's* 2008 rating of Best Graduate Schools. Although the *US News* ranking is only one measure of relative value, "we're very excited about the news," notes Dean of Graduate Studies **Jessie Shefrin**, "especially because their MFA program ratings are based on peer assessment. It's always reaffirming to know that your peers and competitors respect what you're doing."

In order to assess fine arts graduate programs across the country, *US News* surveys academic leaders at 220 colleges and universities offering MFA programs in art and design. Respondents are asked to nominate up to 10 programs for overall excellence and to rate the academic quality of each. RISD's MFA programs received the top average rating: 4.6 out of a maximum score of 5. Individual disciplines were also assessed through a similar process, which placed RISD's departments of Glass, Graphic Design and Interior Architecture at #1 nationally; Industrial Design, Jewelry + Metalsmithing and Printmaking at #2; Ceramics, Digital + Media, Painting, Photography and Sculpture at #3; and Textiles at #5.

"In the last decade, we have shown an unwavering commitment to strengthening our graduate programs through new degree offerings, facilities expansions and upgrades, and steady, strategic growth in enrollment," notes **President Mandle**. "We have worked hard to earn this #1 ranking and will continue to do so in order to ensure that we provide all of our students with the extraordinary educational experience they expect from RISD."

students discuss need for 'student union'

As debate about a student center resurfaced on campus this winter, an ad hoc group of seniors erected a temporary structure behind the RISD Beach to call attention to their desire for a single, central student gathering space on campus. Last year students had commissioned a study by **Janet Stegman BArch '78** of STEGMAN + Associates, Architects, who had previously consulted on the student housing at 15 West. As a result, ongoing attempts to address this issue include the preservation of renovated space in the Tap Room, the recent renovation of a portion of the RISD Store for student usage and student representation on RISD's Facilities Usage committee. In addition, the second floor of The Chace Center (see page 9) will be devoted to student exhibition areas, providing 2,294-sf of new programming space in the Gelman Gallery and the Dryfoos Student Media Gallery.

"A student center isn't just about hanging out," noted one student in an online debate on RISD's *Daily Jolt*. "To me it is about creating a spontaneous space where impromptu events can happen... Maybe it's idealistic to believe that a 24-hour space can exist where you can go and do whatever whenever with whomever." An equal number of students chiming in on the *Jolt* forum suggest that "a student center is a huge waste of money." Given the ongoing debate, surveys are currently underway to better gauge key programmatic objectives on this issue, notes Associate Provost for Student Affairs **Ned Dwyer**.

student talent tapped for film

Students in an Illustration studio taught by Critic **Shanth Enjeti '98 IL** are getting in on the ground floor of a genre-busting film being produced in Providence. The brainchild of The Story Hat, an intellectual property development company run by **Kevin Mowrer**, **Rob Travalino** and **Anthony Lucci**, *Bloodlines* is on its way to being the first feature-length, adult-targeted, CGI-animated horror film in wide release in the US. The 15 students in the sponsored studio are spending the spring semester contributing to the preproduction phase – studying the horror genre, consulting with professional animators and art directors, and sketching in traditional and electronic media to help develop the overall look of the film. With extensive animation and illustration work to be done once production gets underway, Mowrer says that the partnership between RISD and The Story Hat may expand to include additional studios and internships. Check www.risd.edu/sponsored_research_storyhat.htm for more on this studio.

risdpedia

You can help make risdpedia.net, the inspired brainchild of student **Adam Meyer '09 ID**, even more useful to members of the RISD community (and anyone else who stumbles across it online) by adding pertinent information. Dubbed "a collaborative instruction manual for products and materials used by RISD students," it's already full of great information and will only get better over time.



Collection 2008, the annual runway show of the best work produced this year by RISD Apparel Design majors, will be shown on Saturday, May 17 at 7 pm at Veterans Memorial Auditorium in Providence (with a 2 pm preview performance). For tickets and more information, go to www.risd.edu/collection.cfm. Among the apparel being shown in *Collection 2008* is this design by Jenny Park '08 AP, modeled by Liz Luby '08 AP.
Steve Marcel Studio, Inc.

Photography Professor **Ann Fessler** has been awarded the 2008 Ballard Book Prize for *The Girls Who Went Away*. She has given public lectures recently at Simmons College and in the San Francisco City Arts & Lectures Series.

Nancy Friese, professor in Art + Design Education, has secured funding from the Spencer Foundation to support the formation of a Forum in Art + Design Collegiate Teaching at RISD. Programming in the 2007-08 grant year includes a discussion series focused on teaching practice, development of web resources, and ongoing collaboration with Brown University's Harriet W. Sheridan Center for Teaching and Learning.

Continuing Education faculty member **Mary Geisser** has presented workshops on the nexus of the arts, language and imagination in early childhood education at recent conferences including the NAEA National Conferences in New York and New Orleans and the RIAEYC.

Ezio Genovesi, director of the European Honors Program, has lectured recently on "A Photographic History of Early-20th Century Assisi," at the Archivio di Stato di Assisi; on "Walking Artists and Ascetics," for the conference "In Cammino" in Assisi; and on "Sketchbooks: A Historical Overview," at John Cabot University in Rome.

"My Other Husband," an essay by English lecturer **Ann Harleman**, appears in *An Uncertain Inheritance: Writers on Caring for Family*, edited by Eleanor Casey (November 2007, HarperCollins). Her story "Thor-eau's Laundry" was selected as one of the 100 Distinguished Stories of 2006 by *Best American Short Stories*.

Printmaking Critic **Daniel Heyman** exhibited the *Abu Ghraib Detainee Interview Project* in the spring at DePaul University in Chicago; his work has also been featured recently in *Intimacies of Distant War* at SUNY New Paltz and *Artists and Iraq* at the North Dakota Museum of Art. *Esquire* (2.08) and *Virginia Quarterly Review* (Winter '08) have published articles on Heyman and his *Interview Project*.

In March and April **Leslie Hirst**, assistant professor of Foundation Studies, had her first solo exhibition in New York at Pavel Zoubok Gallery, Chelsea.

international opportunities

During Wintersession students took advantage of several new travel/study courses to leave chilly Providence for fascinating experiences in a variety of different cultures. Working with Architecture Professor **Silvia Acosta**, a group of graduate students spent a month in San Miguel de Allende, Mexico, where they designed and constructed a house for a family in need through the nonprofit Casita Linda. **Gerard Minakawa '97 ID** took his group of art and design students further south – to La Paz, Bolivia, where they worked with artisans to develop new products for international markets. Students traveling in Ghana with **Bolaji Campbell**, assistant professor of Art + Architectural History, studied aspects of Ghanaian culture from art historical and studio art perspectives. For details and photos of students' experiences, visit www.risd.edu/international_projects.cfm.

answers blowing in the wind

In a fall semester studio led by Industrial Design Critic **Don DeLuca MFA '71 ID**, RISD students developed ideas for harnessing wind energy that may influence the way wind power is perceived and implemented. In contrast to the tall turbines installed at wind farms – structures that generate as much controversy as they do energy – students' ingenious solutions were designed to fit unobtrusively into existing objects and structures. The designs incorporate inexpensive magnet-based generators into common wind-activated objects, such as flags and whirligigs; if widely adopted, DeLuca explains, such small-scale devices could make a real contribution to the demand for clean energy.

new risd blogs well received

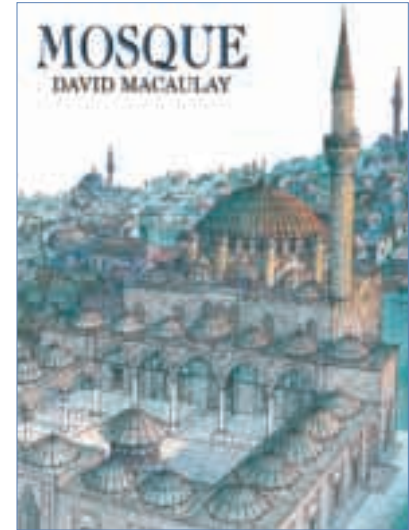
On December 21, the day **John Maeda** was appointed by RISD's Board of Trustees as the 16th president (see pages 2-3), the Communications + Design team launched one.risd.edu, RISD's first official blog. The goal was to offer members of the RISD family an engaging way to welcome the president-elect into the community and share topics of broad interest and concern with him. The blog also provided Maeda with an effective means of asking questions and getting to know the lay of the land at RISD before he arrives on campus to assume his new duties in June. Within weeks, the blog had generated hundreds of fascinating comments from Maeda as well as students, faculty, staff and alumni, who were conversing with him and with each other. According to plan, [one.risd](http://one.risd.edu) was frozen in time and archived on February 18, 2008 as the spring semester began.

On January 25, RISD also launched our.risd.edu as another channel for communications. "Although [our.risd](http://our.risd.edu) is open to anyone with an interest in RISD, we intend for it to be a place for the members of our own community – alumni, students, faculty, staff and parents – to find news and information on a variety of topics of particular interest to RISDoids," notes **Liz O'Neil**, vice president for Communications + Design. Readers of the [our.risd](http://our.risd.edu) blog, which features regular messages from Maeda, O'Neil and Director of Alumni Relations **Christina Hartley '74 IL**, are encouraged to submit questions and comments via e-mail at our-suggests@risd.edu.



Teresa Nouri Rishel

Dale Chihuly MFA '68 CR is creating a site-specific installation for the Chace Center opening; his *Persian Chandelier* (2007, 94 x 118 x 112") for Phipps Conservatory and Botanical Gardens in Pittsburgh, PA is shown here. A traveling exhibition celebrating the work of David Macaulay BArch '69 will also open at the museum as part of the September 27 festivities.



Christopher K. Ho, assistant professor of Art + Architectural History, exhibited work recently in *Happy Birthday*, a solo exhibition at Winkelman Gallery in New York.

Photographs by Professor Henry Horenstein '71 PH/MFA '73 have been on view recently at the University of the Arts in Philadelphia (his *Close Relations* series) and at Fabrik der Künste Gallery in Hamburg, Germany (*Creatures*).

Recent paintings, prints and plates by Painting Professor Holly Hughes were featured in a recent two-person show at Lenore Gray Gallery in Providence; she also had a solo show titled *Farming Umbria* at the Joyce Goldstein Gallery in Chatham, NY.

The Farrar Pond Residence project by Mikyoung Kim, professor and head of Landscape Architecture, has been published recently in *Garden Design* magazine and *Architectural Record*, and the ChonGae Canal Restoration Project in Seoul, Korea has been published in *Sculpture*.

A drawing by Foundation Studies Critic Clara Lieu '98 IL is featured on the cover of *Worldly Acts and Sentient Things* (spring 2008, Cornell University Press) by Robert Chodat.

of/Nature/after, an exhibition of sculpture, drawings and paintings by Sculpture Critic Susan Lyman, was on view last winter at Providence College's Hunt-Cavanagh Gallery.

Two pieces by Continuing Education faculty member Benjamin Macomber were included in the Attleboro Art Museum's annual members' show in January; he also had four watercolors in the fall 2007 Rhode Island Watercolor Society Members' Show.

chace center opens september 27

With construction of The Chace Center wrapping up this spring, the new building will open with a daylong program of performances, music, special exhibitions and activities for adults and children on Saturday, September 27 (see next page for exhibition information). Clad in glass and brick, the 43,000-sf mixed-use facility – on North Main Street opposite Market Square – is named in recognition of the key donors to the project: RISD trustee **Jane Chace Carroll** and her siblings **Malcolm ("Kim") G. Chace** and **Eliot Chace Nolen**, who supported the project in memory of their late parents **Happy** and **Malcolm Chace**. Believing in the expansive, unifying concept of the center, the Chaces also helped inspire other crucial gifts for the \$34-million building during RISD's Future by Design capital campaign. Once it opens, the new center is expected to become a campus hub where students, faculty and visitors to RISD interact as they enjoy student and museum exhibitions, research the museum's collection or head to Foundation Studies studios.

Designed by renowned Spanish architect **José Rafael Moneo**, the five-story building features a façade that includes both clear and etched glass complemented by deep red brick. It is among the first LEED-certified facilities in Rhode Island, having earned a Leadership in Energy and Environment Design rating from the US Green Building Council. Bordered on three sides by historic structures, it will be the only contemporary building by an architect of this stature and international prominence in Providence.

Among the most eagerly anticipated aspects of The Chace Center is that it will open up many new opportunities for expanded exhibitions and programming. risd|works will move to the ground floor,

where the 210-seat **Michael P. Metcalf Auditorium** will offer much-needed programming space. The second floor will house the **Gelman Student Exhibitions Gallery** and the **Dryfoos Student Media Gallery**, totaling 2,294 square feet of space that is larger than any other student gallery on campus. "Students will have a large, centrally located gallery where they can gain professional experience in curating and mounting exhibitions of fellow students' work," notes Provost **Jay Coogan**.

At more than 4,000 square feet, one of the special exhibitions galleries on the third floor will offer the museum its largest exhibition space yet, along with a new entrance to the main level of the existing museum complex via the glass **Museum Associates Bridge**. The museum's largest collection will be moved to the **Minskoff Center for Prints, Drawings and Photographs**, a specially designed study and storage facility on the fourth floor. And the fifth floor will house two Foundation Studies studios, along with the **Woo Foundation Studies Faculty Resource Room**. "Having first-year students go to studio in The Chace Center will give them a natural introduction to the museum's rich resources, which will become an important part of their educational experience," Coogan says.

While completion of The Chace Center will help to expand and reorient the museum, it will also give RISD a recognizable entrance facing downtown Providence and open up pedestrian access between North Main and Benefit streets. In fact, Moneo was particularly inspired by the site – which had served as a campus parking lot since the previous building was razed in 1955 – because it called for designing a contemporary structure that would help connect and make sense of the half a dozen historic campus buildings surrounding it.

chihuly shines at chace center

To celebrate the grand opening of The Chace Center, the RISD Museum of Art has commissioned renowned glass artist **Dale Chihuly MFA '68 CR** to create a site-specific installation for the large special exhibitions gallery on the third floor. Called *Chihuly at RISD*, the exhibition will feature as many as 2,500 pieces of glass attached to the floors, walls and ceiling, making it comparable in scope to previous Chihuly installations in Venice, London and Las Vegas.

"It's going to be big – big and beautiful," Museum Director **Hope Alswang** told *The Providence Journal*. "To think that we can welcome people to The Chace Center with this kind of exhibition is just amazing."

In addition, the museum is planning a complementary exhibition of glass by a number of other artists who studied with Chihuly, including **Howard Ben Tré MFA '80 SC**, **Toots Zynsky '73 GL** and **Steven Weinberg MFA '79 SC**. *Chihuly at RISD* and the supporting show will open with The Chace Center on September 27 and will remain on view through January 28, 2009. *Chihuly at RISD* is presented by Bank of America, with additional support from the Bafflin Foundation, Corning Foundation and the Chihuly Leadership Committee.

macaulay tribute at museum

Building Books: The Art of David Macaulay, a traveling exhibition that originated at the Norman Rockwell Museum in Stockbridge, MA, will also open on Saturday, September 27, as part of the Chace Center festivities. Author/illustrator **David Macaulay BArch '69**, who has won multiple Randolph Caldecott Medals along with a John D. and Catherine T. MacArthur Foundation Award, has demystified the workings and origins of everything from simple gadgets to elaborate architectural structures. A former professor, department head and RISD trustee, he also led the Future by Design capital campaign at RISD, which helped raise funds to build The Chace Center. This exhibition takes an in-depth look at Macaulay's artistic process and extensive body of work, including such contemporary classics as *The Way Things Work*, *Castle*, *City*, *Ship* and *Mosque*. *Building Books* continues at the museum through January 28, 2009.

mandle recognized by a&bc/ri

As part of its annual Encore Awards event on March 6, the Arts & Business Council of Rhode Island presented President **Roger Mandle** with a Special Recognition Award for his "professional accomplishments and personal sacrifices" in ensuring that the arts help improve "the quality of life for all Rhode Islanders." For more information on the organization, the event and the other award recipients, go to www.experienceencore.com/award_winners.



Thanks to its Walter H. Kimball Fund, the RISD Museum of Art recently added *Dolly Parton Backstage*, Symphony Hall, Boston, MA (1972, gelatin silver print, 15 x 15") to its permanent collection. Nine other *Honky Tonk* series photographs by Professor **Henry Horenstein '71 PH/MFA '73** were also added to the collection.

provost elected to caa board

Provost **Jay Coogan** has been named to the board of directors of the College Art Association (CAA), a national organization dedicated to supporting "all practitioners and interpreters of visual art and culture ... who join together to cultivate the ongoing understanding of art as a fundamental form of human expression." The CAA is governed by a 22-person Board of Directors elected by the membership, which includes more than 13,000 artists, scholars, curators, collectors and other visual arts professionals, along with 2,000 organizations. Coogan's term runs through 2012.

eminent scientist visits risd

As part of an ongoing celebration of the 70th anniversary of the **Edna Lawrence Nature Lab**, eminent evolutionary biologist **Lynn Margulis** spoke at RISD in March, drawing a fascinated crowd to a lecture entitled "Evolutionary Origins of Nature's Designs." Her talk interwove a discussion of Gaia (the Earth's great planetary system) and the vast community of microscopic organisms that run the world with designer Ian McHarg's visionary thinking and teaching. In 2007, Margulis co-edited the book *Ian McHarg: Conversations with Students: Dwelling in Nature*. The author of numerous other eye-opening books, including *Dazzle Gradually: Reflections on the Nature of Nature*, the professor and research biologist is known for her irreverence and sharp wit. "While most American biologists emphasize the role of competition in evolution, Margulis stresses symbiosis," notes writer **Jeanne McDermott**. "For example, she views each human cell as a 'sophisticated aggregate of evolving microbial life' – a slightly more tasteful way of pointing out that human beings are essentially packages "of conglomerated bacteria," the writer notes.

Continuing Education faculty member **Judith Moffatt** created the illustrations for *The Twelve Days of Christmas*, which was published in November by HarperFestival.

Foundation Studies Professor **Thomas Lyon Mills** exhibited work in *Drawing Matters*, a winter show at the Wheeler School's Chazan Gallery that also included pieces by Professor **Al DeCredico '66 PT**, Senior Critic **Luis Alonso '74 IL**, Professor and Painting Department Head **Bobbie Oliver**, Professor **Den-nis Congdon '75 PT** and Assistant Professor **Gwen Strahle**. As a visiting artist at Parsons last fall, Mills gave a lecture on his teaching philosophy and practices; in January he participated in graduate reviews at Harvard University Graduate School of Design. Mills' recent solo show at the Luise Ross Gallery in NYC was reviewed in *Art In America* (2.08).

Beth Mosher, assistant professor of Industrial Design, presented a paper titled "Visceral Research, Virtual Food: What Our Edible Culture Can Tell Us about Ourselves" at the annual conference of the International Council of Societies of Industrial Design.

Carrie Moyer, assistant professor of Painting, exhibited work in two recent group shows: *Freeze Frame* at Thrust Projects in NYC and *Un-nameable Things* at Artspace in New Haven, CT.

Graphic Design Professor **Thomas Ockerse** presented two papers at the fall 2007 National Conference on Liberal Arts and the Education of Artists: "Making in the Light of Being" and "Understanding Being in the Light of Making."

As he concluded his Fulbright period at Konstfack, University College of Art, Craft and Design in Stockholm, **Dan Peltz**, assistant professor of FAV, exhibited the results of his research residency in Helsinki, Finland in a solo show titled *Some kind of deer*. He has been awarded a residency from the International Artist Studio Program in Sweden for fall 2008.

Meridith Pingree MFA '03 SC, critic in Digital + Media, has exhibited work recently in *Molten Sprouts*, a solo show at Fringe Exhibitions in Los Angeles; *Ornament: Ho Hum All Ye Faithful*, a group show at BravinLee Programs in NYC that also featured pieces by Rebecca Chamberlain '91 AP (Brooklyn) and Shelter Serra MFA '96 PT/PR (Bollinas, CA); *Frequency* at Millersville [PA] University; *Shift*, a group show of installations at Gallery Aferro in Newark; and *Host*, a group show at the Soap Factory in Minneapolis.

Jennifer Prewitt-Freilino, assistant professor of Psychology, presented a poster titled "Chinese and American Students' Reactions to Social Identity Threats" at the Society for Personality and Social Psychology conference, held in February in Albuquerque.

Painting critic Jackie Saccoccio '85 PT showed paintings recently in *Interrupted Grid*, a solo exhibition at Eleven Rivington in NYC.

Everyday Aesthetics, a new book by Philosophy Professor Yuriko Saito, was just released by Oxford University Press. She received support for release time for writing from RISD's Professional Development Grant fund and the Humanities Fund in Liberal Arts. She recently refereed presentation proposals for the international meeting of CUMULUS (International Association of Universities and Colleges of Art, Design and Media) held in March at Kyoto Seika University. Saito is the associate editor for *Contemporary Aesthetics* (contempaesthetics.org), an online journal sponsored by RISD through support from Academic Affairs and the Division of Liberal Arts.

Bill Seaman, professor of Digital + Media, presented a paper titled "Unpacking Neosentience – Techno-evolution or extreme hostile Takeover Environment?" at the Mutomorphosis Conference in Prague. He and Daniel Howe also presented "Coding Creativity: Generative Models of Associative Thought in the 'Bisociation Engine' and 'Architecture of Association,'" at the 21st Annual CODE Conference of the Society for Literature, Science and the Arts.

Exploding Airplane (2000, painted Styrofoam, urethane foam) by Heide Fasnacht '73 PT is among the work on view through July 20 in *Styrofoam*, a new show at The RISD Museum. This exhibition features works by artists such as Tony Feher, Tom Friedman, Folkert de Jong, Sol LeWitt, Shirley Tse and Richard Tuttle who have experimented with Styrofoam, expanding definitions of what painting, sculpture and photography can be in the process, notes Judith Tannenbaum, the Richard Brown Baker Curator of Contemporary Art who organized the show. For the exhibition press release, go to www.risd.edu/museum_press.cfm.



courtesy of Kent Gallery, NY, + Bernard Toale Gallery, Boston

new museum fellows program in HAVC

The History of Art + Visual Culture (HAVC) department and the RISD Museum of Art have teamed up to create a program that offers talented students hands-on experience with the work of museum curators. Introduced in fall 2007, the Museum Fellows program places selected HAVC concentrators in semester-long apprenticeships with curatorial departments of the museum, where they enjoy rare access to the collections and "experience the behind-the-scenes workings of the museum," says Bolaji Campbell, assistant professor in HAVC and director of the Art History concentration. The positions carry course credit and require significant time commitments, explains Mary Bergstein, professor and head of HAVC. "When we presented the idea to Museum Director Hope Alswang, she agreed that the fellows should be engaged in substantive tasks – the real work of curators."

Three students were selected through competition for 2007-08 fellowship positions: Nikki Thiess-Kusiak '09 JM, paired with curatorial assistant Melissa Buchanan in Decorative Arts; Allison Wucher '09 PT, paired with Terry Somerson, coordinator of museum tours and docents in the Education Department; and Danielle Andress '08 TX, who worked in the museum's Siskind Center alongside Emily Peters, assistant curator of Prints, Drawings and Photographs.

student installations transform museum

Now in its 13th year, the *Sitings* exhibition competition challenges students to propose site-specific installations for the RISD Museum of Art that "exploit and celebrate the architectural idiosyncrasies" of the four-building complex, explains Museum Director Hope Alswang. This year, 21 contestants submitted written proposals for projects to be installed throughout the spring in alternative, non-gallery spaces; internationally recognized sculptor Jonathan Bonner MFA '73 SC reviewed the submissions through a blind process, ultimately selecting *Two Bodies* by Nikole Batista '08 TX – a "humorous and poignant caricature of contemporary cultural perspectives on death," she explains – and *AK-47* by Emmett Moore '10 FD, which comments on the design merit of the assault rifle while drawing attention to its prevalence around the globe. Each winner received a small honorarium, a materials budget and assistance from museum staff in installing their projects, which are on view through June 1.

opening doors for underserved teens

RISD's Department of Art + Design Education has had remarkable success with Project Open Door, a free college-preparation program that provides studio art education and college application support to low-income teenagers in urban schools. Established in 2004, the initiative has engaged more than 300 young people in after-school and summertime programs that focus their efforts on developing competitive portfolios. Teenagers come from high schools around Rhode Island (including the program's partner schools – Hope High School, Feinstein High School, Davies Career & Technical High School and Blackstone Academy Charter School) and work closely with RISD student mentors as they prepare to apply to colleges. Thirty-five Project Open Door alumni entered college last year, and more than 80 percent of teens return to the program from one year to the next. Go to www.risd.edu/faculty_projects_pod.htm for more on this project.

Angela Muir '08 AP and Jenna Robb '08 TX designed this outfit, which was shown in March at a RISD Museum runway event featuring the work of 10 cross-disciplinary teams of students in Apparel Design and Textiles. Through a fall studio course, the students collaborated with the Italian Trade Commission and 23 Italian fabric and yarn mills to design and create garments using these high-quality materials. For more on the project, go to www.risd.edu/sponsored_research_etc.htm.

sherman wins recognition

At its annual Women's Summit in March, Bryant University presented **Merrill W. Sherman**, president and CEO of Bank Rhode Island and chairman of RISD's Board of Trustees since 2007, with the 2008 New England Businesswoman of the Year award. "Merrill exemplifies what [this] award is all about," noted Summit Director **Kati Machtley**. "She spearheaded the 1996 creation of Bank Rhode Island, demonstrating great ingenuity and determination, and has always balanced her career success with tremendous volunteer involvement."

Sherman was also credited with "demonstrating intelligence, ingenuity and perseverance in her leadership of a multimillion-dollar business," being involved in the community and serving as a role model for other women. In addition to chairing RISD's Board, she is a trustee of The Providence Foundation, Crossroads Rhode Island and the Rhode Island Public Expenditure Council. For more background on Sherman, go to www.risd.edu/president/sherman.html.

furniture students on time

RISD's Furniture Design Department was one of a handful of international entities invited to exhibit in *That's Design!*, a showcase of emerging designers that runs concurrently with the *Salone Internazionale del Mobile* (April 16-21) in Milan. For the RISD exhibition *ON TIME*, 12 students in a studio taught by Assistant Professor **Lothar Windels BID '96** developed innovative objects and furnishings that "question our current fast-paced lifestyle or help to slow things down," he explains. **Nora Rabins MFA '09 FD**, for instance, created *Quiet*, a clock-driven music box that "momentarily de-contextualizes time"; **George Dubinsky '08 FD** developed a *Hydroscopic Calendar* that marks a change in the seasons by measuring the natural expansion and contraction of wood. In mid April Windels and the students travel to Milan, where they are presenting their expertly crafted prototypes to throngs of design fans from around the world. **John Dunnigan MFA '80 ID**, professor and head of Furniture Design, noted that "the opportunity to exhibit their work in an international context is a significant educational experience," as well as "great preparation for the professional world of furniture design." For more information and images, visit www.risd.edu/student_projects_milan08.htm.



David O'Connor

merida meridian sponsors winning weaves

Merida Meridian, a Massachusetts company that produces woven floor coverings for the high-end residential market, sponsored a fall 2007 studio and competition in the Textiles Department. Juniors in the *Weaving II* class taught by Senior Critic **Susan Sklarek MFA '77 SC** toured the company's Fall River mill and then worked with paper, linen and wool yarns provided by the manufacturer to design and weave prototypes for their line. At the end of the semester, the Merida Meridian design team – including alumnae **Maegan Fee '01 TX**, **Ellen Hayes '84 PH/MFA '00 TX** and **Happy Farrow MFA '06 TX** – selected several winning designs for further development: top-place winners **Emily Feather '09 TX**, **Michelle Ann E Mizioch '09 TX** and **Yao Cheng '09 TX** each received \$1000 prizes, and **Ilene Godofsky '09 TX**, **Martin Emlein '09 TX** and **Masako Ogiyama '09 TX** received honorable mentions and \$500 each.

risd!alert

Last fall RISD announced a plan to coordinate and test a new system for responding to an emergency that either impacts or has the potential to impact the RISD campus. The plan provides a framework of procedures that will be reviewed annually and regularly exercised so that when a crisis does occur RISD will respond in an effective and efficient manner, with the goal of protecting human life and preserving property and resources. As part of this plan, all students, faculty and staff have been encouraged to provide preferred contact information for a new RISD!ALERT emergency notification system, which uses broadcast phone, e-mail and text messaging for quick distribution of time-sensitive information. More information on the plan and notification system is available online at <http://intranet.risd.edu/departments/emergency.aspx>.

Douglass Scott, senior critic in Graphic Design, recently lectured on "Art, Technology, & the Politics of German Design, 1890-1945" at Connecticut College. His other recent lectures include "Historical Aspects of Identity," for *DesignInquiry 2007* in Vinalhaven, ME; "Influence, Inspiration, Intent" at the Maine College of Art; and "Graphic Design in Europe and Asia during the Art Deco period" at the Art Institute of Boston.

Paintings by Foundation Studies Senior Critic **Wendy Seller '75 AE** are included in the first edition of *Studio Visit Magazine*, published in March by Open Studios Press. She has exhibited recently at the School of the Museum of Fine Arts, Boston and the New Arts Center in Newton, MA.

A poster by **Oren Sherman '78 IL**, senior critic in Illustration, was selected for display at Grand Central Terminal and throughout the NYC subway system. It will be on view throughout the spring.

Printmaking Critic **Brian Shure** showed oil paintings in *City Life-New Paintings*, a solo exhibition held last winter at Katharina Rich Perlow Gallery in NYC.

Linda Sormin, assistant professor of Ceramics, installed *Parting Favors* at ArtHaus Miami UNFAIR '07, held in December a few blocks from ArtBasel Miami.

Professor Emeritus **Friedrich St. Florian**, designer of the WWII Memorial on the National Mall in Washington, DC, has been elected to the American Institute of Architects' College of Fellows for his contributions to the profession. "St. Florian was elected to receive this honor not only because of his award-winning designs, but also his significant contributions to architectural education," the AIA said.

Last fall Assistant Professor **Gwen Strahle** was a visiting artist to post-baccalaureate painting students at Brandeis University.

Lynnette Widder, associate professor and department head of Architecture, chaired a conference held in January. Titled "Return Emigrants: Architectural Cross-Currents in Postwar Germany and America," the conference brought German and American scholars and critics to Columbia University to examine the relationship between German émigré architects in the US and their counterparts in Germany.

Continuing Education faculty member **Ryder Windham** is the author of two books that were published in 2007: *Star Wars: The Rise and Fall of Darth Vader* (Scholastic) and *Star Wars: Jedi vs. Sith – The Essential Guide to the Force* (Del Ray).

Kinetic Reconstructive System, a digital animation by Assistant Professor of Interior Architecture **Peter Yeadon**, is included in the exhibition *Technical Detours*, on view this spring and summer at the Hungarian National Gallery in Budapest. Last fall he delivered a lecture at Brown University titled "Novel Properties: Speculations on Nanotechnology in Architecture."

Foundation Studies/Photography Critic **Lisa Young** exhibited photography, video and mixed-media work in *Transcendence and Temporality*, a winter show at Maine College of Art's Institute of Contemporary Art. Her video *Practice* was screened continuously for a month at the RISD Museum of Art as part of the Videos In Progress program.

Interior Architecture Critic **Andrzej Zarzycki** will present his design research "Formal Mutations: variation | constraint | selection" (formalmutations.com) at the Nexus 2008 Conference in June. The research will also be included as a paper in a book sponsored by the conference.

Graduate Studies Senior Critic **Janet Zweig** recently installed a public artwork on a bridge in St. Louis for the St. Louis Metro Arts in Transit program. She is currently working on several other public art commissions, including projects for: a housing development in Santa Monica, the Brightwater Treatment Plant in Seattle and the Town of Huntington Station on Long Island.

in memoriam
Gregor Goethals, a professor emerita of Art History and former director of Graduate Studies, died on February 1, 2008.



The pneumatically adjustable swivel/tilt *Brackett Chair*, designed by Assistant Professor **Lothar Windels BID '96** and produced by Nienkamper since 2006, earned a 2007 Platinum Award of Design Excellence from *Design Journal* and a 2007 ADEX Award for Design Excellence. The chair was featured recently in *Metropolis* (12.07).

board announces new tuition rate

RISD's **Board of Trustees** recently approved tuition for the 2008–09 academic year at \$34,665, with fees for campus housing and dining plans varying depending on location, occupancy rates and the number of meals per week purchased. The cost for a double room will be \$5,860 and participation in the freshman dining plan will total \$4,400.

"Fortunately, we live at a particularly promising time for artists and designers to make their mark on the world," **President Mandle** noted in a letter to students and parents. "With critical thinking, creativity and innovation now prized as essential to helping us solve everything from business challenges to large humanitarian issues, the education RISD offers has never been more relevant and valuable."

support for new interdisciplinary courses

Academic Enrichment/Kyobo Fund grants at RISD support team-teaching between liberal arts and art/design disciplines, encouraging faculty to develop courses that explore the connections between fields. The Deans Advisory Council recently reviewed and awarded grants to the following faculty teams for their collaborative courses: **Kelli Auerbach** (English) and **Jocelyne Prince MFA '94 GL** (Glass) for *Water Flow/Glass Flow*; **Liz Collins '91 TX/MFA '99** (Textiles) and **Donna Gustavsen '70 AP** (Apparel) for *Fabric to Form*; **Nick DePace BArch '95** (Architecture), **Lili Hermann** (Landscape Architecture) and **Jonathan Highfield** (English) for *Waters of Faith, Identity and Sustenance*; **Yuriko Saito** (History, Philosophy and the Social Sciences) and **Anna Strickland** (Photography) for *Aqua Incognita: Explorations of Water*; and **Charlie Cannon** (Industrial Design/Landscape Architecture), **Enrique Martinez MID '98** (Architecture/Graduate Studies) and **Colgate Searle BLA '71** (Landscape Architecture) for their course *Water in the Equatorial Tropics*.

faculty projects funded

RISD's Professional Development Fund Committee met in November to review proposals from faculty, curators and librarians for projects to be undertaken between January and June, 2008. The following were selected to receive funding in this cycle: **Laura Colella** (Film/Animation/Video), for pre-production research in New York and Los Angeles for her film adaptation of the Chinese novel *The Republic of Wine*; **Claudia Covert** (Fleet Library at RISD), for travel to military archives in the US and UK to research World War I camouflage dazzle for an exhibition; **Paola Demattè** (History of Art + Visual Culture), for travel to a sacred grotto site in Inner Mongolia to map and document frescoes and statuary; **Nancy Friese** (Art + Design Education), for materials for a series of works on Boston's Emerald Necklace, to be made during her residency at Simmons College; **Ann Harleman** (English), for research in Sicily on the life of Renaissance painter Sofonisba Anguissola for a novel about the artist; **Ann Hood** (English), for research on a traditional farm in Italy which will contribute to the development of her novel *Dear Mussolini*; **Susan Lyman** (Foundation Studies/Sculpture), for research in British archives and arboretums and on-site artwork based on ancient trees, for her upcoming exhibition in Provincetown, MA; **Lorelei Pepi** (Film/Animation/Video), for post-production costs for her gay/lesbian musical animation in the style of 1930s studio musical cartoons; **Tracy Steepy** (Jewelry + Metalsmithing), for an exhibition and workshop on regional jewelry and metals at the MADE BY studio in Sweden, during her residency there; **Merlin Szasz** (Foundation Studies), for design and printing of a catalogue to accompany his retrospective at the Providence Art Club; **Agnieszka Woznicka** (Film/Animation/Video), for editing, sound work, scoring, duplication and festival applications for her short stop-action animation *Birdy*; **Peter Yeadon** (Interior Architecture), for the production of shape memory alloys and fabrication of test environments.

starting point

introducing this issue's feature articles

the mandle years

In 1993, when Roger Mandle arrived on campus full of ambition and fresh ideas, RISD was at a very different stage of evolution, in need of both clear direction and new leadership. In America, the culture wars of the mid 1990s were just about to heat up, eventually giving way to a societal shift marked by the dot-com craze and the Y2K conversion. Mandle's style proved to be a good fit for RISD as he navigated through the national debate about government funding for the arts, speaking passionately about both the expressive value of art to

society and the economic value of good design to the bottom line. Over the years, he worked with all members of the RISD community to hone an ambitious vision for advancing academic programs, improving the RISD experience for students and expanding educational and cultural opportunities for museum visitors. And the president devoted enormous energy to realizing that vision as we entered a new century full of promise. The following 18 pages celebrate the Mandle years and all that they have meant to the RISD community.



THE MANDLE STYLE

1993 95 98 01 04 2007

When Roger Mandle arrived at RISD in 1993, he was 52, fresh from the museum world and eager to translate his lifelong love of art and education into productive leadership of one of the most highly respected colleges of art and design in the country. He came ready to listen, learn and be a catalyst for positive change. From the beginning, he spoke in the plural about “our goals as a community;” not about his own personal agenda. And he admitted that he and his wife Gayle “fell in love” with the place because of the people. “The wonderful creative spirit of the faculty, students, alumni and staff still speaks to my heart as an artist,” Gayle says. “As undergraduates, both Roger and I started out as painters — and would actually have dates in the studio painting together — so we immediately connected with the incredible creative energy here.”

Now, as Gayle completes a series of autobiographical collage paintings (see page 51) and the president prepares to “graduate” from RISD when he hosts his final Commencement ceremony on May 31, they consider the progress made during his tenure to be more the result of community efforts than personal successes. “Our accomplishments are about what everyone involved here has done together,” Mandle says. “One of the things we’ve done together is create a community of interests that is greater than the sum of its parts. When I came here I helped to connect the dots — to build a cohesive community unified by a sense of purpose and participation.”



PHOTOS ON THESE PAGES: As an accomplished interior designer and painter, **Gayle Mandle MFA '97 PT/PR** helped transform the President's House on Bowen Street into a warm and welcoming home celebrating a distinctive mix of artwork by students and faculty. Almost every member of the RISD community frequented the home for a wide variety of events and took the opportunity to write personal messages on the walls outside the downstairs restroom (left).

As an art historian, former museum director and national arts advocate, Mandle was attuned to RISD's mission from the start and worked to remain true to it while helping the college and museum to anticipate and adapt to the needs of the 21st century. The painter-turned-art-administrator focused his creative energy on working with faculty, trustees and senior staff in planning for a brighter future. Over a 15-year period — the longest tenure of any top administrator at RISD since the early 20th century — Mandle spearheaded inclusive planning processes, set ambitious priorities and goals, and led RISD through a period

“One of the things we’ve done together is create a community of interests that is greater than the sum of its parts.”

of positive and substantive change. And Gayle helped every step of the way. “We’ve acted as a team in everything we’ve done,” she says with a smile, “from bringing up our children, to enjoying new discoveries with our grandchildren, to running RISD. But here I’ve been like Roger’s sous chef, working in the background to support his efforts in any way I can.”



Perfectly at Home

As a result of team efforts, the entire RISD community has benefited from stimulating new programs, major facilities upgrades, new governance structures and participatory organizations, and a variety of other valuable initiatives (see pages 18–27). The president himself says that he’s most proud of “having brought RISD together as a community of creative people, linking our internal and external connections.” He found that of all the people he has worked with during his tenure, students have made the most lasting impact; “the most exhilarating moments I’ve had as president have been working with our exceptional students in classes I’ve taught,” he says. “They’ve challenged me to think in new ways about works of art and ideas, and there can be no doubt that these inspiring engagements form the basis of RISD’s special qualities.”

Unpretentious and approachable, the president has actively engaged with all members of the RISD community throughout his tenure here. Gayle has proven to be equally facile, whether finalizing the menu for a trustees’ dinner with the “great” Dining Services staff, having an intense discussion about art and ideas with a couple of faculty members or sharing her studio with fellow grad students. A prime example of the Mandles’ style is their transformation of the President’s House from a formal, private mansion on Bowen Street to a warm, inviting RISD center for campus-wide receptions, dinners for special invited guests and regularly scheduled luncheons for small groups of faculty and staff. “The house seemed so huge and empty when we first moved here from our tiny townhouse in DC,” Gayle recalls. “All the walls were white and the neighbors say the curtains were always drawn at night. Now it’s lit up like a Christmas tree!” And it’s full of art — works in all media on loan from faculty, Gayle’s own paintings and fabulous ceramics and other pieces the Mandles have bought, many from students. The two also had a hand in encouraging a more aesthetically appealing, design-conscious campus overall, both inside and out, from furnishings and artwork on display in lobbies and offices to landscaping and banners on the riverfront.



Other members of the RISD family have been equally effusive about the Mandles’ gracious manner as they traveled throughout the world to meet with alumni and parents, educational and business leaders, and fellow art and design advocates. Years ago, Matthew Bird ’89 ID remembered when he and a small group of fellow alumni dropped by unannounced at the Mandles’ seaside home in Westport, MA, one Sunday afternoon. “Although we had no invitation, Roger and Gayle were willing to take time out from their weekend to talk to us,” he recalls. “Their desire to know us, their interest in us, in our careers and in our lives was not the stuff of politics or fundraising,” Bird concludes. “Their enthusiasm for RISD and the benefits of a RISD education was sincere and infectious.”

Global Arts Ambassador

The president that everyone on campus knows on a first-name basis has, in fact, achieved something both remarkable and very simple at RISD: he has brought about significant and memorable changes while making lifelong friends along the way.

Although the Mandles are moving out of the Bowen Street house they've made a home, neither one is ready to retire or slow down. "I've been lucky to have a chance to be very creative over a long period of time," the president noted in an interview last fall in *I.D.* magazine. "But everything has an end. My own biological clock tells me it's time to do something else, just as RISD's biological clock says it's ready for a new leader."

Having considered a number of exciting options in recent months, the Mandles have chosen the most challenging one of all: helping to shape a complex of new cultural institutions in Doha, Qatar. As Executive Director of the Qatar Museums Authority (QMA), Roger will facilitate all aspects of QMA's ambitious plans, from administration and finance to curatorial direction and educational programs. He will also oversee multiple building projects, starting with the new I.M. Pei-designed Museum of Islamic Art slated to open in November 2008. "In recent years, Qatar has made a truly historic investment in education, arts and culture," he notes. "As much as anyplace in the world, this is where you sense new horizons opening for people on an almost daily basis. It is an honor to have been chosen to participate in these changes."

As he and Gayle move on to this new challenge in Qatar, Roger hopes to be remembered as "a leader who champi-



oned the value of each creative individual here to achieving RISD's mission." He also hopes that in the coming years, RISD will make great strides in increasing financial aid so that talented students from all economic and racial backgrounds are able to attend. As her husband turns over the reigns to President-Elect John Maeda to solve this and other challenges that lie ahead, Gayle sums up their experiences here by saying: "We'll always remember our RISD years as the best period in our lives."

"The most exhilarating moments I've had as president have been working with our exceptional students in classes I've taught."





15 years of progress

FIFTEEN YEARS IS A LONG TIME IN THE LIFE OF ANY INSTITUTION, especially a progressive college where new students arrive every year and people are actively engaged in questioning the status quo. With Roger Mandel's leadership, RISD evolved from "an elite art school that sat almost literally in the shadow of its neighbor, Brown University, to a dynamic, multifaceted presence in both Providence and the world," noted design critic and editor Julie Lasky in *I.D.* magazine (September 2007). Much has happened along the way to make this transformation possible, not least of which was the president's success at galvanizing the community on campus and off to work toward shared goals. The following pages highlight a few of the milestones along the path of progress forged by RISD's 15th president.

1993

JANUARY

FEBRUARY

MARCH

APRIL

MAY

JUNE

JULY

AUGUST

SEPTEMBER

OCTOBER

NOVEMBER

DECEMBER

1994

JANUARY

FEBRUARY

MARCH

APRIL

MAY

JUNE

JULY

AUGUST

SEPTEMBER

OCTOBER

NOVEMBER



| 93 | **AUGUST 1993**

Earl Roger Mandle arrives at RISD from the National Gallery of Art in Washington, DC.

"We are delighted to bring a person with Roger's exemplary credentials and character on board," notes Chairman of the Board Sidney F. Greenwald, head of the Presidential Search Committee. "His leadership will be more than ample insurance for RISD's... success into the next century."

1993 » gas costs \$1.00/gallon » Toni Morrison wins Nobel Prize for Literature » Bill Clinton becomes 42nd president of the US » *Wired* publishes first issue



WITH STUDENTS AT INAUGURATION

SEPTEMBER 1993

RISD begins to get wired, thanks to a grant from the National Science Foundation :-)

| 94 |

WINTER 1994

The president meets with alumni in Seattle, San Francisco, Los Angeles, Miami, Palm Beach, Atlanta, Washington, DC, Philadelphia and Boston - with an additional trip to Tokyo to meet with the Alumni Club of Japan.

APRIL 1994

A three-day celebration known as Creativity and the Ecology of Change culminates in Roger Mandle's inauguration as RISD's 15th president.



WITH PROVIDENCE'S FORMER MAYOR BUDDY CIANCI, JR.

SUMMER 1994

RISD partners with the City of Providence in a Neighborhood Mural program - the first of many such public projects students and faculty undertake during Mandle's tenure.

SEPTEMBER 1994

The president creates RISD's first Committee on Diversity.



MEETING WITH ALUMNI

"The first step in dealing with any problem is to realize there is one," notes Trustee Bill Watkins, co-chair of the Diversity Committee and later RISD's first African-American Board chair [1998-2000]. "I credit Roger's leadership in that regard."

1994 » White House launches first website » World Series cancelled due to players' strike » *Schindler's List* wins Academy Award for Best Picture

DECEMBER

1995

JANUARY

FEBRUARY

MARCH

APRIL

MAY

JUNE

JULY

AUGUST

SEPTEMBER

OCTOBER

NOVEMBER

DECEMBER

1996

JANUARY

FEBRUARY

MARCH

APRIL

MAY

JUNE

JULY

1995 » Netscape debuts, ushering in dotcom boom » I.M. Pei's Rock & Roll Hall of Fame opens » *Jurmanji* (Chris Van Allsburg MFA '75 SC) hits the big screen

| 95

JANUARY 1995

As chairman of the new HELP (Health and Education Leadership for Providence) Coalition, Mandel announces a Healthy Kids Initiative for the city's under- and uninsured children.



PRESIDENT BILL CLINTON VISITS WITH PRESIDENTS OF RI COLLEGES AND UNIVERSITIES

MAY-OCTOBER 1995

The museum mounts the first of its annual *Sitings* exhibitions, inviting students to submit proposals for site-specific installations.

SEPTEMBER 1995

Harriet Ewing and family donate their home to RISD. The Ewing Center will ultimately house two departments created by the president: Multicultural Affairs and International Programs.

RISD wins a grant from US Department of Education for a new Center for the Advancement of Art + Design Education.

"It's unusual to have a college president like Roger Mandle who is passionate about K-12 art education," notes Professor Paul Sproll, head of Art + Design Education. "His enthusiasm permeates the entire institution."

OCTOBER 1995

RISD trustees endorse a new direct election process to increase alumni representation on the Board, leading to the October 1996 election of David Macaulay BArch '69 as the first such trustee.

| 96

APRIL 1996

RISD is reaccredited for 10 years after a visit by a joint team from the National Association of Schools of Art and Design (NASAD) and the New England Association of Schools and Colleges (NEASC).

Chan Krieger & Associates of Cambridge, MA, completes a comprehensive Campus Master Plan for RISD.

JULY 1996

RISD teams up with Bryant College, the leading business college in Rhode Island, to create the Center for Design & Business.

SEPTEMBER 1996

President Mandle backs the creation of a freestanding Furniture Design Department that will offer undergraduate and graduate degrees.

RISD opens a state-of-the-art facility for the Industrial Design Department after Professor Jim Barnes BArch '69 oversees the inspired renovation of the 50,000-sf building at 161 South Main Street.



CHATTING WITH TINA WEYMOUTH '74 PT AT A DRAWING WORKSHOP



WITH PROFESSOR ROSANNE SOMERSON '76 ID AND PROFESSOR EMERITUS TAGE FRID



AUGUST

SEPTEMBER

OCTOBER

NOVEMBER

DECEMBER

1997

JANUARY

FEBRUARY

MARCH

APRIL

MAY

JUNE

JULY

AUGUST

SEPTEMBER

OCTOBER

NOVEMBER

DECEMBER

1998

JANUARY

FEBRUARY



1996 » 43.2 million (44%) of US households own personal computers » 14 million are online » first cloned sheep, Dolly, created in lab

OCTOBER 1996

As programming for the annual alumni reunion and parents' weekend expands, the revised approach spawns a new name for the event: RISD by Design.

FALL 1996

A President's Scholars Program is introduced to provide half-tuition scholarships for graduate students from minority and other under-represented communities.

The Office of Student Life works with students to create a new governance structure for undergraduates known as the Student Alliance, with a separate Graduate Student Alliance to address the needs and concerns of this population.

SEPTEMBER 1997

The museum opens its newly renovated Paula & Leonard Granoff Galleries, named for the RISD trustee (and her husband) who donated \$1.5 million for the ongoing maintenance/interpretation of the collection.

FALL 1997

RISD introduces a new Master of Interior Architecture program.

Several departments begin the multi-year Bamboo Design Initiative, a series of interdisciplinary studios focused on researching innovative uses and applications for bamboo.

NOVEMBER 1997

RISD's new Presidential Lecture Series features architect James Wines, poet Mary Oliver and author/evolutionary biologist Stephen Jay Gould.



DONOR PAULA A. GRANOFF WITH CURATORS ANN WOOLSEY AND LIZ TEUTNER



MARCH

APRIL

MAY

JUNE

JULY

AUGUST

SEPTEMBER

OCTOBER

NOVEMBER

DECEMBER

1999

JANUARY

FEBRUARY

MARCH

APRIL

MAY

JUNE

JULY

AUGUST

SEPTEMBER

OCTOBER

NOVEMBER

| 98

JANUARY 1998

The museum launches Free-for-All Saturdays, a monthly series of free events to encourage underserved families in the region to explore the collection and special exhibitions.

APRIL 1998

RISD's *Reimagining Ecology* symposium brings artists and environmental advocates to campus, culminating a year of activities focused on the symbiosis between art, design and nature.

AUGUST-DECEMBER 1998

The museum's *Gifts of the Nile* exhibition draws more than 40,000 visitors during its four-month run, breaking all previous records for attendance.

FALL 1998

The museum launches a grant-funded Art ConText project with the Providence Public Library.

OCTOBER 1998

RISD signs a 10-year lease to convert the top five floors of the Fletcher Building at 173 Weybosset Street to new studio space for fine arts graduate students.

NOVEMBER 1998

The RISD Awards celebration, initiated in the mid 1970s as the Athena Awards, reemerges as an annual event in NYC.

After five years of research and development, RISD's Universal Kitchen is featured in *Unlimited by Design* at the Cooper-Hewitt National Design Museum, and subsequently at the RISD Museum of Art.

"In my view there is no design project underway anywhere that is more important or significant than [RISD's Universal Kitchen]," notes author James Joseph Pirkel, an advisor to the project.



SISTRUM (EGYPTIAN, LATE DYNASTIC PERIOD)
HELEN M. DANFORTH FUND



MARTHA STEWART WITH ROGER AND GAYLE MANDEL

DECEMBER

2000

JANUARY

FEBRUARY

MARCH

APRIL

MAY

JUNE

JULY

AUGUST

SEPTEMBER

OCTOBER

NOVEMBER

DECEMBER

2001

JANUARY

FEBRUARY

MARCH

APRIL

MAY

JUNE

| 99

AUGUST 1999

President Mandle creates a Department of Environmental Health and Safety; within years RISD earns an ISO 14001 rating for outstanding environmental controls and educational programs.

1999 » *Family Guy* (Seth MacFarlane '95 FAV) premieres on Fox » *The Sopranos* hits HBO » John Stewart hosts the first *Daily Show* on Comedy Central

| 00

WINTERSESSION 2000

A group of RISD students travels to Cuba, which leads to subsequent faculty exchanges with the Ludwig Foundation in Havana.

MAY 2000

Anthony Belluschi BArch '66 is elected chairman of the Board of Trustees, becoming the first RISD graduate to serve in this leadership position.

Internationally renowned architect José Rafael Moneo is chosen to design the RISD Center.

JUNE 2000

Judith Tannenbaum* begins infusing new life to contemporary programming at the museum as the first curator of a new Contemporary Art Department.

*In 2002 she assumes the title of Richard Brown Baker Curator of Contemporary Art in recognition of the late collector and longtime supporter of the museum who funded the endowed curator position, the first in RISD's history.

The *RISD FILM* scholarship benefit at the Directors Guild in Hollywood celebrates the many contributions of RISD alumni to the film and television industries.

AUGUST 2000

RISD buys eight buildings on both sides of South Main Street, adding another 60,000 square feet of space for future expansion.

SEPTEMBER-DECEMBER 2000

The two-part sales exhibition *Virginia Lynch: A Curatorial Perspective* helps raise funds for the Virginia Lynch Endowed Scholarship Fund (see also page 5) for minority students.

OCTOBER 2000

At the Designing Our Future symposium, leading scientists and design researchers from all over the world discuss the growing impact of new technologies on our lives.

The museum's Pendleton House wing for American decorative arts reopens after an exhaustive refurbishment funded by the Ida Ballou Littlefield Memorial Trust and The Champlin Foundations.

2000 » human genome deciphered » US Supreme Court rules against Florida recount, declaring George W. Bush president » Time-Warner buys out AOL



JUDITH TANNENBAUM, RICHARD BROWN BAKER CURATOR OF CONTEMPORARY ART



RISD TRUSTEE VIRGINIA LYNCH (CENTER) WITH SCHOLARSHIP RECIPIENTS

JULY

AUGUST

SEPTEMBER

OCTOBER

NOVEMBER

DECEMBER

2002

JANUARY

FEBRUARY

MARCH

APRIL

MAY

JUNE

JULY

AUGUST

SEPTEMBER

OCTOBER

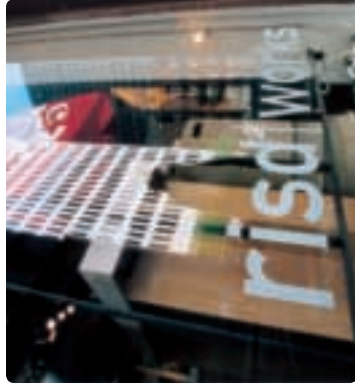
NOVEMBER

DECEMBER

2003

JANUARY

FEBRUARY



| 01

SPRING 2001

After a redesign, RISD's primary website (www.risd.edu) wins several awards and is chosen by The Library of Congress to be permanently archived in its "Web experience of 2001" collection.

OCTOBER 2001

risd|works (www.risdworks.com), RISD's first retail gallery/store, opens in downtown Providence.

NOVEMBER 2001

RI Congressman Patrick Kennedy announces a \$2-million appropriation from the Small Business Administration to develop RISD's new Center for Integrative Technologies (CIT).

2001 » terrorist attacks on New York and Pentagon » Apple introduces iPod » embryonic stem cell research sparks national debate

| 02

JANUARY 2002 - MAY 2003

RISD celebrates its 125th anniversary with a series of events, including *Daughters of Invention*, a Founders' Day forum on the school's history, and the RISD Roma tour to Italy.

FEBRUARY 2002

In a gift valued at more than \$1 million, FleetBoston Financial donates the historic banking hall and other space in its 15 Westminster Street building for use as a new library.



WITH BIG NAZO PUPPETS AT THE CAMPAIGN LAUNCH

"Fleet strongly supports the arts and education, and sees this as an opportunity to not only support RISD but also provide greater access to arts and education for all Rhode Islanders," notes Anne Szostak, chairman and CEO of Fleet-Rhode Island.

OCTOBER 2002

At the public launch of The Future by Design, RISD's first comprehensive capital campaign, the president announces an ambitious goal of \$85 million to raise funds for the RISD Center and the library, along with scholarships and academic programming needs.

| 03

APRIL 2003

Office dA, the Boston-based firm run by Nader Tehrani BArch '86 and Mónica Ponce de León, is chosen to design the interior of the new 50,000-sf library at 15 Westminster Street.

JUNE 2003

Roger Mandle and fellow college presidents in Providence announce an agreement with Mayor David Cicilline to provide nearly \$50 million in voluntary payments to the city over the next 20 years in lieu of property taxes.

2003 » US invades Iraq » Supreme Court upholds University of Michigan Law School's affirmative action policy » Concorde makes its last commercial flight



MARCH

APRIL

MAY

JUNE

JULY

AUGUST

SEPTEMBER

OCTOBER

NOVEMBER

DECEMBER

2004

JANUARY

FEBRUARY

MARCH

APRIL

MAY

JUNE

JULY

AUGUST

SEPTEMBER

OCTOBER

| 04

FALL 2003

The RISD Museum begins a new alumni membership program in which 20% of the proceeds from alumni membership dues go to the Phil Seibert Alumni Art Acquisition Fund.

Recently hired Department Head Bill Seaman launches a new MFA program in Digital + Media.

OCTOBER 2003

RISD dedicates its new state-of-the-art Angelo Donghia Studio for Interior Architecture in memory of the renowned designer, whose foundation helped finance the sixth-floor renovation in the CIT.



PROFESSOR LILLIAN WONG AT THE RIBBON-CUTTING FOR THE DONGHIA STUDIO

FEBRUARY 2004

RISD Trustee Jane Chace Carroll and her siblings provide \$9 million for the Moneo building in memory of their late parents, Happy and Malcolm Chace, defining the project's new name as The Chace Center.

AUGUST 2004

RISD announces the establishment of its first Parents' Council, an educational forum for parents of current students and alumni.

OCTOBER 2004

A new Staff Council gets off the ground following a discussion held at one of President Mandile's periodic Town Meetings for all members of the campus community.

2004 » Google goes public » iTunes sells its 200-millionth song » *Lord of the Rings: Return of the King* sweeps Academy Awards

NOVEMBER

DECEMBER

2005

JANUARY

FEBRUARY

MARCH

APRIL

MAY

JUNE

JULY

AUGUST

SEPTEMBER

OCTOBER

NOVEMBER

DECEMBER

2006

JANUARY

FEBRUARY

MARCH

APRIL

MAY

JUNE

2005 » New England Patriots win Super Bowl for third time » Hurricane Katrina slams into Gulf Coast » Kyoto Protocol takes effect without support of US or Australia

| 05

MARCH 2005

Cellist Yo-Yo Ma's Silk Road Project announces a new agreement with RISD and Harvard for a shared endeavor involving annual residencies at RISD for Silk Road musicians, composers and storytellers.



SILK ROAD ENSEMBLE IN RESIDENCE

"We are honored to be partnering with RISD... and anticipate many years of innovative educational and artistic collaboration," says Yo-Yo Ma.

AUGUST 2005

Target sponsors the RISD/Target Emerging Designer/Artist Award, a \$25,000 prize presented in partnership with *surface* magazine, alternating each year between an up-and-coming American designer or fine artist.

SEPTEMBER 2005

RISD opens the top 10 floors of the building at 15 Westminster Street (already set to house the new Fleet Library at RISD) as residential housing for 500 students.



15 WEST, NOW THE ROGER WANDLE BUILDING

"In terms of creating a useful building, it was a really smart way of doing it," notes Janet Stegman Barch '78 of STEGMAN + Associates: Architects. "The interior aesthetic is very RISD - more spare and minimal than at other colleges."

OCTOBER 2005

RISD exhibits a solar-powered home in the 2005 Solar Decathlon, a competition sponsored by the US Department of Energy. The prototype created by a team of students and faculty is open to the public on the National Mall in Washington, DC.

DECEMBER 2005

Philanthropist David Rockefeller pledges \$1 million to the RISD Museum of Art for the restoration, reinstallation and reinterpretation of the Asian galleries named for his mother and aunt.

| 06

MARCH 2006

A visiting team from the National Association of Schools of Art and Design (NASAD) and the New England Association of Schools and Colleges (NEASC) reaccredits RISD for another 10 years.



ELIOT CHACE NOLEN, ARNOLD-PETER WEISS, CLARA DALE BARCH '75, ROZIT ARDITI '06 FD, JAY COOGAN, DAN MCCABE, JANE CHACE CARROLL, MALCOLM CHACE, HOPE ALSWANG, PRESIDENT WANDLE

JUNE 2006

The Chace siblings participate in a groundbreaking ceremony for The Chace Center, which will officially open on September 27, 2008 (see page 8).

2006 » North Korea fires test missiles » solar system loses Pluto as a planet » four of five MacArthur Awards in the visual arts go to RISD alumni

OCTOBER 2006

RISD marks the successful completion of The Future by Design capital campaign with the dedication of the

JULY

AUGUST

SEPTEMBER

OCTOBER

NOVEMBER

DECEMBER

2007

JANUARY

FEBRUARY

MARCH

APRIL

MAY

JUNE

JULY

AUGUST

SEPTEMBER

OCTOBER

NOVEMBER

DECEMBER

2008



FOR RISD ©2006 JENNY HOLZER, PHOTO: ERIK GOULD



SHAKING HANDS WITH BROWN UNIVERSITY PRESIDENT RUTH SIMMONS

| 07

NOVEMBER 2006

The museum receives a \$600,000 National Endowment for the Humanities Challenge Grant for phased renovations to the Radeke Building, completed in 1926 as the museum's main building.

FEBRUARY 2007

President Mandle announces that he will step down when his contract expires in 2008.

"Through his intellect, dedication and creativity, [President Mandle] has propelled RISD to the highest realm of academic standing internationally," notes Board Chair Clara Dale BArch '75.

MAY 2007

Merrill W. Sherman, president and CEO of Bancorp Rhode Island, Inc., and its wholly owned subsidiary Bank Rhode Island, is named chairman of RISD's Board of Trustees.

JULY 2007

RISD and Brown announce a new dual degree program that will enable undergraduates to earn a BA from Brown and a BFA from RISD in five years, with the first students admitted in fall 2008.

DECEMBER 2007

RISD's Board of Trustees announces that John Maeda, associate director of research at the MIT Media Lab, will become RISD's 16th president (see pages 2-3).

| 08

MAY 2008

RISD's Board of Trustees dedicates the facility at 15 Westminster Street as The Roger Mandle Building: The Rhode Island School of Design Living and Learning Center.



6 COMMUNITY

IMPACT:

“**BEING** president of RISD is not only difficult and demanding, it’s an absolutely once-in-a-lifetime kind of a gift,” says **Tony Belluschi BArch ’66**, an honorary trustee who, in 2000, became the first alumnus to be elected chairman of RISD’s Board of Trustees. “When a person gets it, he shouldn’t squander it, and Roger never did. He brought a rare combination of talents, skills and experience to RISD; and he did a grand job. He was clearly the right person at the right time in the right place. He was there because he *loved* the School and always will.”

Many people in the community share this view of Mandle’s appropriateness for RISD.

“We’ve always been an excellent school, but our physical consciousness and our ambitions were more ‘measured’ before Roger,” recalls Professor of Graduate Studies **Christina Bertoni**, who has taught at RISD for over two decades and was a member of the 1992 Presidential Search Committee that selected Mandle for the position. “Coming to us from the National Gallery in Washington, DC, he was very comfortable with *big* ideas. He really enlarged our vision of what RISD could become in the state, the country and the international arts community.”

Clara Dale BArch ’75, chairman emerita of the Board of Trustees (2004–07) adds, “He brought the wider world and the future to RISD in a way that didn’t rupture its core identity. He brought us a sense of our own potential and he helped us reach it.”

“

Roger is a tireless advocate for the arts and for RISD specifically. He’s just nonstop in that regard. I think it’s apparent to everybody how much he loves RISD.

”

Christina Bertoni, professor of Graduate Studies

A LARGER CONVERSATION

building BRIDGES

“

Roger has taken a school that was once really good but focused inward, and made it even better and look outward.

”

David Macaulay BArch '69, former trustee and chair of The Future by Design capital campaign

WHILE every campus community has a life of its own, it is also part of the city and state in which it's located. “Roger was the first president of RISD who really extended himself into the architecture and infrastructure of both the city and state in not only an educational way but in an economic way,” notes **Merrill Sherman**, current chairman of the Board. “We cannot be successful as a school if we're in a community that's deteriorating around us. A stronger Providence is a stronger RISD, and I think that RISD's ties to the community mean a better Providence.”

Providence Mayor **David Cicilline** couldn't agree more. “Roger has been a great leader of RISD, but also a great civic leader in Providence and Rhode Island. In virtually every area where the city has faced questions of economic development, education, land use, Roger has ensured that RISD was a partner in that work. He set a very high standard for civic engagement. Providence is a better city because of Roger's leadership and RISD is certainly a better institution because of his leadership.”

According to **David Macaulay BArch '69**, the former trustee who chaired The Future by Design capital campaign from 1998–2006, “Roger took the ‘ivory tower’ that was RISD – a kind of quirky, unique place – and laid it on its side to cross the river. I think that was a tremendous decision,” he adds. “Maybe it would have happened over time, but it happened in *his* time in a way that it hadn't previously. RISD had always remained a fairly self-contained, self-congratulatory institution, and Roger changed that – from adding risdlworks to new studio spaces in various parts of downtown and eventually to the Fleet Library. He built bridges with all kinds of people in his own quiet but effective way to allow RISD to expand in a symbolic and useful manner.”

Although students enjoy a shorter window through which to view progress on campus, **Charlotte Thomas-Davison MArch '08**, co-president of the Graduate Student Alliance, appreciates President Mandle's emphasis on building bridges. “Roger recognizes – and has taught some of us through his actions – that it is our responsibility as artists and designers to connect to the world. We are in a position where we can actually affect change through the work we make. But without really connecting with the greater community, I don't see how we could be poised to do anything significant.”



FAMILIAL feel

“
Roger has energized us into thinking about the edges of art-making — about new methods, collaboration, breaking boundaries.
”

*Joan Herron '64 GD,
Alumni Association president*

MANDLE'S presidency also reached as deeply *into* the institution as it extended out into the world over the last 15 years. “Roger leaves the school a better place than he found it,” says Sherman. “The programs are broader and deeper than they ever have been before. The faculty is stronger. The quality of the student body and the number of highly qualified, creative students interested in coming to RISD has grown with each year that he has been here. He has also elevated us from a Board perspective. We have a broader, more diverse Board of Trustees. We’ve reached out to alumni, we’ve reached out to significant players in the art and design community, and these are all to Roger’s credit.”

Joan Herron '64 GD, president of the Alumni Association, confirms that “Roger has always been quite good at listening to alumni and being available, hearing our point of view. There had been a lot of top-down decision-making in the past, and he was always very aware of that. When there was an academic plan or some other plan, he would consult with all members of the RISD community” rather than dictating his own solution.

Assistant Professor of English **Nicole Merola**, chair of the Faculty Steering Committee, agrees that Mandle is a conciliator. “The thing that’s been most important for me as a faculty member is that Roger has worked incredibly hard to address the communication issues at the school and to work with the faculty in opening up new ways of dialogue,” she says. “Historically there’s been some tension; Roger recognized that and worked to repair it. He has been very forthcoming with me about information that the faculty wants, and we’ve been able to work together in person to get productive communication going.”

Herron, a very active alumna based in California, agrees that Mandle has always had “the best interest of RISD uppermost in his thinking.” And, she adds, “His enthusiasm and energy for the School have encouraged and supported my own commitment to RISD,” which has, in turn, been recognized by the president. “Roger has continually been appreciative and for that I am immensely grateful. He has allowed me to feel that we are a mutually supportive family at RISD.”

Bertoni echoes Herron’s familial feeling and is particularly appreciative of the way “Roger and Gayle have been warm and gracious, continually opening their home and hearts to people,” in particular, an apartment on the ground floor of their house that they have made available to students with financial need. “On a very personal, ordinary family level, I think that the maternal and paternal gesture of opening their home and involving students in their life was very important.”

Clara Dale offers the story of another powerful gesture instigated by Mandle. In 2001 the lifelong nonsmoker was diagnosed with lung cancer. “I was vice chair of the Board of Trustees at that point, and I called Roger to tell him,” she recounts. Six weeks after she underwent treatment, Mandle asked if she would consider becoming chairman of the Board. Dale’s doctor encouraged her to accept the offer of this “extraordinary organization,” and today pronounces her cured. “I will never ever forget Roger Mandle’s call,” the chairman emerita says. “It was literally transformative and life-affirming that RISD made me that crazy but wonderful offer.”

moving ON

AT a recent meeting of the Graduate Student Alliance, President Mandle talked about what it feels like to be leaving and not to know exactly what the future will bring, according to Thomas-Davison. “He acknowledged that there’s such great potential, and at the same time it’s scary,” she says. “That’s exactly what we [graduate students] all feel, so it was nice to have that dialogue with him. It was a way of really *connecting*. We’re graduating and so is he.”

For the last year Merola has been observing the outgoing president from the vantage point of a relative newcomer to RISD who just joined the faculty in 2005. “It’s so impressive to me that Roger has continued to knuckle down and to think about what’s best for RISD. He is doing work that he doesn’t actually have to do, especially at the end of a long presidency,” she says. “He’s also working with [president-elect] John Maeda in really important ways. This last year he’s been working in ways that I didn’t anticipate to make sure that there is a kind of seamlessness to the transition. Roger genuinely cares about the future of RISD.”

This total commitment to RISD is the signature of his 15-year tenure at the School. Back in 1993, when Mandle first became president, Bertonni had a dream about him in Woods-Gerry, the 19th-century administrative building that used to house the president’s office. “It’s a fascinating building full of nooks and crannies, hidden passages and back stairways,” she says. “When Roger first started, I dreamed that he was finding new rooms and opening doors in Woods-Gerry that had been sealed off. He found places that we didn’t know were there and he wasn’t afraid to go in, to explore them. And I think that’s actually what he did as president. Roger has done a tremendous job for RISD.”

“

When someone has been around for 15 years doing great things, sometimes you don’t know what it would have been like if they hadn’t been there.

”

Charlotte Thomas-Davison
MArch '08, Graduate Student
Alliance co-president

text by Jane Bernstein | design by Karen Healey '90 GD/Peapod Design



mandle legacy

Clearly, President Mandle has made a memorable impact on RISD. The cornerstones of his legacy include such tangibles as:

> the successful completion of The Future by Design, RISD's first comprehensive capital campaign, which brought in more new funding than was ever raised over a comparable period at RISD – more than \$105 million for scholarships, programming and facilities improvements

> significant growth in the endowment (from \$67 to \$350 million), providing a strong foundation for the future and enabling RISD to become less tuition-driven than in the past

> new residential facilities for 500 additional students at 15 West, which now enables RISD to provide on-campus housing for 55 percent of the student body (up from 38% in 1993)

> a 70% gain in studio and classroom space (from approximately 275,000 sf to more than 478,000 sf) with the addition/renovation of 161 South Main, the CIT and Fletcher buildings, Mem Hall, the award-winning Fleet Library at RISD

> new academic offerings, including master's programs in Architecture and Interior Architecture, along with two entirely new departments – Furniture Design and Digital + Media

> degree concentrations in English, the History of Art + Visual Culture, and History, Philosophy + the Social Sciences

> new and vibrant programming through the museum's first-ever Contemporary Art Department and its first endowed curator position

> new governance structures, including a Board of Governors for the RISD Museum of Art

> a faculty/student ratio of 1:8.2 (from 1:11), giving students improved access to their teachers and mentors

> a doubling of institutional resources devoted to student aid (from \$5.1 to \$10.7 million), which helps more students in need

> increased interest in RISD among applicants worldwide, as evidenced by the growing number of applications (from 3,174 in 1993 to 5,028 in 2007) and the caliber of those applying (average SAT scores topped 600 in both math and verbal in 2002 and continue to rise)

> a much stronger graduate school, with four new master's programs added and more than double the enrollment of 15 years ago (from 151 to 400+)

> vastly improved town-gown relationships thanks to valuable government and private sector partnerships, increased public engagement among students, voluntary contributions from local colleges and universities in lieu of property taxes and RISD's many redevelopment efforts downtown

For more detail on the Mandle legacy, go www.risd.edu/mandle

readers' views

acronyms explained

current majors

AP	Apparel Design
AE	Art + Design Education
AR	Architecture
CR	Ceramics
DM	Digital + Media
FAV	Film/Animation/Video
FD	Furniture Design
GD	Graphic Design
GL	Glass
IA	Interior Architecture
ID	Industrial Design
IL	Illustration
JM	Jewelry + Metalsmithing
LA	Landscape Architecture
PH	Photography
PT	Painting
PR	Printmaking
SC	Sculpture
TX	Textiles

former majors

AD	Advertising Design
MD	Machine Design
TC	Textile Chemistry
TE	Textile Engineering

fifth-year bachelor's degrees

BArch	Architecture
BGD	Graphic Design
BID	Industrial Design
BIA	Interior Architecture
BLA	Landscape Architecture

master's degrees

MA	Arts in Art Education (formerly MAE)
MArch	Architecture
MAT	Arts in Teaching
MFA	Fine Arts
MID	Industrial Design
MIA	Interior Architecture
MLA	Landscape Architecture

continuing education

CEC	Continuing Education Certificate
*	attended RISD, but no degree awarded
FS	attended Foundation Studies only

decadence?

I am astounded by the articles in this past issue of *risd views* [Fall 2007] about the cost of a RISD education. It is especially incomprehensible since I do not have children.... [but] I'm tempted to sense it all as pure decadence.

Enrolled as a freshman in 1955, I believe tuition was \$850 a year. I lived in a small boarding house room at 47 Waterman Street [and] my father sent me a \$20 check every month. The room cost \$5 a week. Food was about \$2 a day (breakfast and lunch at the Mem Hall cafeteria and supper at a Chinese restaurant up on Thayer Street).

I didn't own a radio or anything else I would have to plug into the wall except for one ordinary table lamp. I never looked at a television during my four years there; no one had one. (TV was something one's parents kept on when one was home on a weekend. It was not cool.) RISD was terrific.

Bob Cronin '59 PT
Falls Village, CT

graphic over-drive

I always look forward to *risd views* and seeing what is up on the hill. The latest issue [Fall 2007] was no exception. I was, however, tested to make sense of the graphic over-design-because-the-computer-would-let-me-do-it of pages 10 through 25. Perhaps it is my age or a general crotchiness, but I find the design incredibly messy; too many typefaces, lack of contrast for readability (what happened to black and white?) and generally chaotic in appearance.... Argh!!!! Enough. I still love the school and wish that I could make a huge gift to the financial aid fund.

Jotham W. Bailey '64 TX
South Orange, NJ

multi-level success

I do enjoy *risd views*. It succeeds on a number of levels. I read it cover to cover and look forward to the next issue. Keep up the good work!

Mort Libby '61 GD
Cincinnati, OH

minor error

A minor correction to the item on page 7 [Fall 2007] regarding my upcoming show at the museum. That show is actually not the one now on display at the National Building Museum but a considerably larger exhibition originally curated by the Norman Rockwell Museum and currently on tour. It will come to RISD for a rest before heading out again (see page 9). No big deal of course, but you might as well have the real story. The publication looks terrific, incidentally.

David Macaulay BArch '69
Norwich, VT

depression cure

The newest issue of *e-views* [10.19.07] is FANTASTIC. I'm super impressed with the student work, the inclusion of videos and, of course, the quality of the work itself. Work coming out of RISD is the best cure for depression I know.

Michael Yurges MFA '85 PH
Litchfield, CT

thanks for our.risd

A great big thanks [to President-Elect] **John Maeda** for communicating, caring and informing the extended RISD family (see new blogs, page 7). As a parent of a RISD graduate, ... I have always cared about the school; now I am also informed and feel like part of the RISD family. Once again, thanks very much. Keep up the caring and sharing.

Mary Rainsberger (parent of
Melinda Rainsberger '04 FAV)
Miami, FL

deserving of credit

Thank you for including mention of POLLACK's *Women's Work* collection [Spring 2007], our second in conjunction with the RISD Museum. Five years after we introduced *Attention to Detail*, our first wildly successful collection inspired by the museum, I felt it was time to take a fresh look at the vast costume and textiles archives, an invaluable resource that unfortunately does not get the attention it deserves.

While the article cites **Rachel Doriss '99 TX** (see also page 37), my associate design director, for her key role in the development of this collection, there are three other people who deserve a large amount of credit and thanks: **Lauren Valente '05 TX**, who joined our team right out of RISD and made an enormous contribution to the collection – a tribute to both her talent and her RISD Textiles education; and **Madelyn Shaw**, then acting curator of Costume and Textiles, and **Kate Irvin**, associate curator, who provided tireless support and a wealth of information without which *Women's Work* would not have been possible....

Museum Director **Hope Alswang** also enthusiastically embraced our association with the museum, and *risd views* has been very generous in acknowledging both of our RISD Museum collections. Again, many thanks to all.

Mark Pollack '76 TX
New York, NY

news from alumni relations

updates on clubs, initiatives + the association



During the last year, President Mandle has visited alumni clubs throughout the country to wrap up his 15-year tenure at RISD. Among those who enjoyed catching up with him in Baltimore [far left] were Pamela (Huse) Wallace '52 CR, Barbara Greene Sterne '50 TX and Jamie Kutner '06 PR. The president is shown here with an alumna and Professor Holly Hughes at a reception at Christie's in Manhattan.

strong start for alumni lecture series

A month after he learned he was the winner of the prestigious 2008 Randolph Caldecott Medal, author/illustrator **Brian Selznick '88 IL** visited campus as the first speaker in a new Alumni Lecture Series sponsored by the Alumni Relations Office. As an alumna and RISD parent herself, Director of Alumni Relations **Christina Hartley '74 IL** felt strongly about launching a new series in which some of RISD's most amazing alumni would return to campus to talk to current students and fellow alumni in the region.

When Selznick showed slides of his work in February, he talked about his extraordinary children's novel *The Invention of Hugo Cabret* (2007, Scholastic), which won him the Caldecott, and also about the dozen books that preceded it. The author and illustrator, who now splits his time between San Diego

and Brooklyn, told a reporter for *The Providence Journal* that he was "completely stunned" on getting the Caldecott call at 3am. He also talked about



taking liberal arts classes at Brown and designing sets for plays there because his parents thought he should get "a good liberal arts education just in case the art thing didn't work out."

The second alumnus in the series, glass maverick **James Carpenter**

'72 IL, visited RISD on March 18 to talk about his firm's many high-profile projects. James Carpenter Design Associates in NYC is known worldwide for

its innovative use of glass in architecture and for shaping space through the manipulation of light. In projects ranging from the renovation of Madison Square Garden in 2005 to the glasswork in the subway station at Broadway and Fulton in Manhattan to the current expansion of the Israel Museum in Jerusalem, JCDA has collaborated with leading architects on everything from airports to courthouses, convention centers, bridges, chapels and private homes. "It's important that our work is seamlessly integrated into a building – that it's so integral that you confuse where the art and building meet," Carpenter has said. On April 10 RISD will honor him with a 2008 Athena Award for Excellence in Design (www.risd.edu/risd_awards.cfm).

Based on enthusiastic response from the community, the Alumni Lecture Series will continue in the fall with an exciting new line-up of speakers.



club contacts

general information

Christina Hartley '74 IL
Director, Alumni Relations +
Special Events
chartley@risd.edu
401 454-6794

alumni association officers

Joan Herron '64 GD
president
joanherron@sbcglobal.net
415 771-1905

Robyn Ericsson BArch '87
1st vice president
boocherelli@yahoo.com
401 331-6926

Nat Hesse '76 SC
2nd vice president
nat15@shop.com
505 471-8255

Mike Martella BArch '91
committee coordinator
mtm@cope-linder.com

regional contacts

Argentina
Andres Rosarios BArch '97
a.rosarios@fersa.com.ar
011-54-11-4786-9494

Arizona
Phoenix
Amanda Blum '98 CR
Amanda@howlingzoe.com
602 795-7752

Tucson
Erica Swadley '62 IL
hanumom@swadley.us
520 744-3426

Atlanta
Huckleberry Starnes '94 SC
huck@huckmade.com
404 272-0003

Austin
Dianne Mullen BArch '82
RISD.Austin@yahoo.com
512 535-8417

Australia
Brad Buckley MFA '82 SC
B.Buckley@sca.usyd.edu.au
011-61-2-9351-1061

Bahamas
John Cox '95 IL/MAT '96
iamjohncox@gmail.com

Dionne Benjamin-Smith '91 GD
dionne@coralwave.com

Boston
Karen Fox BArch '74
info@risdboston.com
781 721-2140

Chicago
Keith Campbell BArch '78
kcampbell@rtkl.com
773 477-8657

Colorado
Jim Leggitt BArch '73
jim.leggitt@rnldesign.com
303 575-8515

Connecticut
Michael Esordi '91 GD
mike@duotribe.com
860 455-2113

Karen '90 GD +
Jim Healey BArch '91
jim@peapoddesign.com
203 966-4881

Dallas
Steven Kinder '97 ID
steve@exhibit-associates.com
214 780-0552

Houston
April Rapier Irvine MFA '79 PH
aprilrapier@heartstone.com
713 663-6373

India
Praneet Bubber MArch '97
praneet@studiospmb.com
011-91-98-1552-2226

Devika Khanna '93 GD
devika@pointdesign.in
011-91-98-2193-1669

Anuradha Parikh BArch '82
matrixone@mac.com
011-91-22-2352-6566

Israel
John Hopp '01 ID
hoppatan@yahoo.com
011-972-954-4165

Japan
Yuh Okano '91 TX
okano@textilesyuh.com
011-81-277-22-5227

Korea
Ki Ho Park '86
PHkistone@korea.com
011-82-2742-0603

Los Angeles
Ivel Reyes Leatham '98 TX
info@risdla.com



Before stepping down, each of the club leaders shown here worked hard to plan activities and events of interest to fellow alumni in his or her area. The Alumni Relations Office would like to thank (from l-r) Wendy Gonick '88 GD and Nancy (Smullen) Crasco '64 AE in Boston, Stephanie Yoffee '89 GD in Washington, DC, and Amy Calkins '81 PH and David Kendall '96 GD in Seattle for their good humor, great ideas and ongoing commitment to RISD.

submission guidelines

If you'd like to share news about your exhibitions, projects, awards or any other accomplishments (including the birth or adoption of a child, not to mention tying the knot), we'd like to encourage you to use a single contact as opposed to calling or e-mailing multiple RISD staff members. Please submit all news to:

risdviews@risd.edu

It is not necessary to copy the Alumni Relations staff on these submissions, but do feel free to attach high-resolution image submissions (in tif or jpg format). Due to server limitations on our end, the total size of any attachments can't exceed 6MG.

If you prefer not to e-mail us or would like to submit supporting materials that aren't e-mailable, please use this RISD address:

risd views

Two College Street
Providence, RI 02903
USA

RISD has several ways of disseminating your news to fellow alumni, including via class notes (see pages 37-51) and other sections of this magazine, which is now published twice a year (in mid-fall and mid-spring); our monthly electronic newsletter *e-views* (www.risd.edu/eviews.cfm); and our online listing of all current exhibitions of alumni work (that we're aware of) taking place throughout the country and in various parts of the world (www.risd.edu/exhibitions.cfm). If you have any questions about any of these vehicles or about submitting information, please e-mail risdviews@risd.edu or call 401 454.6349. For questions about alumni activities and programming, contact Christina Hartley '74 IL at chartley@risd.edu or 401 454.6794.

get your risd e-mail account

In response to a number of requests from alumni, RISD is now making e-mail forwarding accounts available with the @alumni.risd.edu server tag, according to Christina Hartley '74 IL, director of Alumni Relations. "Alumni want a RISD e-mail address so they can easily affiliate with each other on Facebook, Flickr, LinkedIn and other online communities," Hartley says. It's now easy for alumni to sign up for a RISD e-mail account at www.risd.edu/alumni. "You can decide how to list your own name, but everyone has the same tag at the end," Hartley explains. "For instance, I could sign up as chartley@alumni.risd.edu or if I wanted to emphasize my class year or major I could make it hartley74il@alumni.risd.edu."

One more bit of e-advice: if you want to receive messages from RISD, please set your spam filters to accept e-mail from ePublications@risd.edu. "We get a lot of bounced-back messages even though we're using the e-mail addresses you've registered with us," Hartley says, noting that spam filters are likely to blame.

west coast biennials

The RISD Northern California Alumni Biennial 2008 drew an enthusiastic crowd to the opening on March 4 at Oakland [CA] Art Gallery, where it remained on view through March 29. Curated by René de Guzman, senior art curator at the Oakland Museum of California, the show featured work in a wide variety of media by alumni living and working in the greater Bay area. The RISD Southern California Alumni Biennial 2008 follows, with a three-day run June 19-21 at Tinlark Gallery in Hollywood. Curated by Molly Barnes, an art collector, author, critic and gallery owner, this biennial will showcase work by alumni living and working in and around Los Angeles and San Diego. Together, both biennials demonstrate the collective impact of RISD graduates on contemporary culture in California. Check out images from the biennials at www.flickr.com/photos/risd_biennials_and_art_sales.

Maine

Mira Alden MFA '03 GD
mira@aldendesignstudio.com
207 671-1341

Midwest

Stephanie Henry '87 GD
stephanie@henrydesigninc.com
614 299-2774

New Hampshire

Christine Hall '00 ID
gearfish@hotmail.com
603 598-3175

New Mexico

Nat Hesse '76 SC
nat15@swcp.com
505 471-8255

New Orleans

Carrie Lee Pierson-Schwartz '93 GL
blauhaus@bellsouth.com
985 796-0222

New York

Polly Carpenter '77 PT
polly@carpenternyc.com
212 431-6666

New Zealand

Rick Lucas '72 IL
lucasr@cpit.ac.nz
011-03-9940-8427

Northern California (NoCA)

Fred Fassett BArch '70
Fred.Fassett@generalprint.com
510 548-2201

Jane Kim '03 PR
crowsneststudio.jane@gmail.com

Peru

Claudia Ferrari BGD '91
cferrari@axis.com.pe
011-511-222-6161

Claudia Hernandez '90 PT

mussh@excite.com
011-511-242-6456

Philadelphia

Mike Martella BArch '91
mtm@cope-linder.com
215 203-3121

Portland, OR

Brian Bainson BLA '87
brian@quatrefoilinc.net
503 256-8955

Rhode Island

Gail Ahlers '85 JM
gail@ahlersgifts.com
401 434-2982

Linda Coulombe MAT '86

lindacoulombe145@comcast.net

Jeffery Yan BArch '01
jyan@digication.com

RISD Rural

mid-Hudson Valley, NY
Kate Cohen '69 AE
kcohen@aol.com
518 392-0947

Joan Sussman '72 PH
joansussman@msn.com
518 644-6440

Rome

Denise Fralley '02 LA
denisesara.fralley@fastwebnet.it
011-39-06-4544-5879

San Diego

Tara Magboo '01 IL
savvyjeweler@gmail.com

St. Louis

Patricia Boman '85 GD
pboman@earthlink.net
636 458-4255

Taiwan

Su-Yi Wun BArch '99
swun3@seed.net.tw

Thailand

Amornpimol (Viravan)
Thanakitamnuy '86 GD
amornpim@adsl.loxinfo.com
011-662-255-3053

Twin Cities (Minnesota)

Peter Zelle '87 GL
peter@zelleglass.com

Utah

Deanpaul Russell '95 ID
deanpaul@congruentinc.com

Washington, DC / Baltimore

Jamie Kutner '06 PR
jamie.kutner@gmail.com
410 419-9509

online resources

www.risd.edu/alumni.cfm

www.risd.edu/alumni_directory.cfm

<http://intranet.risd.edu/risdalumni>

SAVE THE DATE October 10-12, 2008

risd alumni + parents' weekend by design



October 10-12, 2008

**JOIN US FOR THREE
MEMORABLE DAYS
AT RISD WHERE
YOU'LL FIND:**

PEOPLE WORTH MEETING

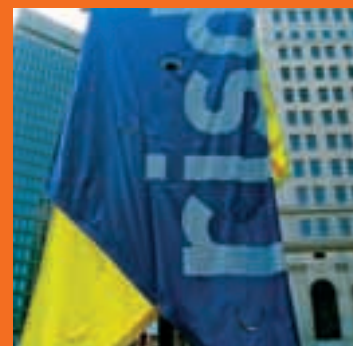
including John Maeda, RISD's dynamic 16th president (www.risd.edu/president), along with RISD faculty, alumni, students and staff

**VISUAL STIMULATION
LIKE NOWHERE ELSE**

including the new Chace Center, featuring exhibitions such as *Chihuly at RISD*, a stunning installation by glass artist Dale Chihuly MFA '68 CR, a show of illustrations by award-winning author David Macaulay BArch '69, and student-curated exhibitions in the new Gelman Gallery and Dryfoos Student Media Gallery

**AND PLENTY WORTH
DOING**

explore RISD's studios in action, participate in discussions about career options and browse through incredible art and design work at risd|works and our annual street sale



portfolio



Red Box Still Life (2007, oil on canvas, 12 x 16") by **Robert Cronin '59 PT** (Falls Village, CT) was among the new paintings he exhibited last fall at the Zabriskie Gallery in New York City.

unions

Barbara Boughton '68 PT and Steven Small on September 7, 2007. Glendale, MA.

John A Fazzino '86 CR and Mark J. Corsi on July 19, 2007. Cranston, RI.

James Thomas Williamson '89 IL and Yoshiko Mukai on October 6, 2007. Brooklyn, NY.

Kate Greenhalgh '90 TX and Anthony Joseph Pasquale. Wellfleet, MA.

Alexander Kemp '92 PT and Winnie Yuan on September 29, 2007. Santa Monica, CA.

Catherine Soule '93 TX and Bernard C.D. Mein on September 15, 2007. Ludlow, MA.

Maureen Lynn Thompson '94 GD and John Thomas Mure on July 21, 2007. Phoenix, AZ.

Suzanne Good '97 GD and Edward Hazard. Boston, MA.

Heidi Sawyer BArch '99 GD and **Robert Creighton '98 ID** on June 16, 2007. Pasadena, CA.

Courtney Fanning '98 PR and Devin Desmarais on October 13, 2007. Stoneham, MA.

Price Latimer '00 GD and Salman Agah on November 3, 2007. Los Angeles, CA.

Megan White '01 IL and Michael O'Hanlon on July 14, 2007. Madrid, Spain.

Sarah Peck '03 SC and Edward Sherman on May 26, 2007. New York, NY.

Michelle Howard '04 PT and Bryan Poirier on June 16, 2007. Attleboro, MA.

additions

A son, Jackson Finn, to **Stephie** and **George Lange '78 PH** on October 29, 2007. New York, NY.

A daughter, Ava Coco, to **Anita Meyer '83 GD** and Andrew Brown on September 14, 2007. Melrose, MA.

A daughter, Helena Poppy, to **Mark Booth '87 PR** and Kathleen O'Dell on August 3, 2007. Chicago, IL.

A son, Roman Orion Cash, to **Jocelyn Worrall '90 TX** and Jon Hokanson on August 30, 2007. His older brother is Silas. Brooklyn, NY.

A daughter, Lillian Sperry, to **Jean Pettigrew '90 PT** and John-Paul Whelan on August 10, 2006. Her big brother is Jack. San Francisco, CA.

A son, Junior Valentine, to **Elisabeth Scheidl '90 ID** and Jimmie Collier on September 4, 2007. San Francisco, CA.

A son, Samuel, to **Theresa Powers '91 PT** and Kerry Koerbling on April 12, 2007. Los Angeles, CA.

A son, Kai, to **Helen Im '92 IL** and **Peter Russell BArch '01 PR** on July 17, 2007. New York, NY.

A daughter, Kylie Alexa, to **Robert** and **Jill (Pallelko) Graham '93 AP** on March 22, 2007. Kylie joins her brother Aidan Noah, who is 3. Norwalk, CT.

A son, Primo Joseph, to **Margaret May '93 TX** and Larry LaRocca on April 16, 2007. Brooklyn, NY.

A son, Colin Robert, to **Nancy** and **James Templeton BArch '93** on September 24, 2007. Philadelphia, PA.

A son, Asher Camino, to **Rebecca Hannon '95 JM** and Anton Christiansen on September 13, 2007. Ithaca, NY.

A daughter, Lilliana Yi-Mei, to **Andrew To BArch '95** and **Jennifer Sarabia MArch '00** on December 9, 2006. Boston, MA.

A son, Maxim Judd, to Jason and **Anna (Kessler) Rulnick '96 AP** on June 10, 2007. New York, NY.

A son, McCrea Hugh, to **Anna-Katherine (Johnson) '97 GD** and **Corbet Curfman '96 IL** on June 5, 2007. Seattle, WA.

A daughter, April Jacobie, to Randi and **Mark Soltyslak '97 AR** on October 30, 2007. Somerville, MA.

A son, Elijah Liam, to Jeremy and **Sarah (Woodard) Case '98 JM** on January 12, 2008. He joins his older brother Abram, who is 2. Arlington, VT.

A son, Grant Austen, to **Heather (Andes) '99 GD** and **Sam Bancroft '99 ID** on July 1, 2007. Fort Lee, NJ.

A son, Tommaso, to **Katherine Kokkinides '99 BArch** and Massimo Dozzini on September 16, 2007. He joins older sisters Mariaelena, 6, and Elisa, 3.

deaths

Charles H. Cummings '34 MD of Eastham, MA on October 9, 2007.

Hazel Lillian (Sundin) Lemeshka '38 AE of Acworth, GA on August 8, 2007.

Nancy (Mills) Merrill '47 GD of Meriden, CT on January 12, 2008.

Charlotte (Simonds) Greenewalt '50 PT on August 15, 2007. West Dover, VT.

John Perrino '48 ID on November 5, 2007. Cranston, RI.

Thomas Sainsbury '49 MD on September 8, 2007. Pawcatuck, CT.

Jean (Scully) Laviolette '51 AP on December 21, 2007. Charlottesville, VA.

Roy Spelman '51 TE on September 3, 2007. Spartansburg, SC.

Pasquale Morano '53 PT on January 31, 2008. Brockton, MA.

Peter George '56 ID on January 20, 2008. Chambersburgh, PA.

Carol (Allen) Bloomquist '59 AE on September 9, 2007. Plainville, CT.

Karel Gertsacov '60 AE on December 29, 2007. Narragansett, RI.

Robert Stewart '60 MD on November 14, 2007. Duxbury, MA.

Lorellie (Stubbs) Durocher '64 GD on December 21, 2007. New London, CT.

Cecile Bayon '68 IL* on September 4, 2007. Kennebunk, ME.

James Gow III '74 IL on August 25, 2007. North Waldo-boro, ME.

Christopher Lee '91 PT on November 13, 2007. Northampton, MA.

Peter Smith MFA '98 GD on October 5, 2007. Statesboro, GA.



Todd McKie '66 PT (Cambridge, MA) showed *My Dog Thinks I'm a Genius* (2007, flashe on canvas, 48 x 60") and other *Decent Paintings* last fall at Boston's Gallery NAGA. He also exhibited paintings and monotypes in *On Paper*, a solo show at the Page Bond Gallery in Richmond, VA.



Phyllis Limbacher Tildes '67 IL (Savannah, GA) created the illustrations for *Apples* (2007), a children's history of the fruit and its folklore written by Jacqueline Farmer. It is the 16th book she has illustrated for Charlesbridge Publishing.



At Night (2000, thread on layered fabric, 36 x 48") is part of *Surrounded by Family and Friends*, one of two exhibitions by **Deidre Scherer '67 AE** (Williamsville, VT) that toured museums in Florida last winter. She was recently presented with the Humanities Award from the American Academy of Hospice and Palliative Medicine.

notes

'40

In January the Glynn Art Association Gallery on St. Simons Island, GA hosted a retrospective exhibition of mixed-media work by **F. Carolyn (Perrault) Inman IA** (St. Simons Island, GA).

'45

Miriam Beerman PT (Upper Montclair, NJ) was the 2007 recipient of a \$25,000 grant from the Anonymus Was a Woman Foundation. She has had recent solo shows at the Everson Museum in Syracuse, NY and the QCC Art Gallery in Queens.

'52

Robert Thornton PT (Providence) had an exhibition of paintings last winter at Bert Gallery in Providence.

'59

A collage by **Keith Hollingworth CR** (Amherst, MA) was selected to promote *A Question of Impeachment*, a performance series held at the Culture Project in SoHo, NYC. He had a recent show of illuminated boxes at Gallery A3 in Amherst, MA, and his work was included in a painting show at the Cooley Dickinson Hospital in Northampton, MA.

'60

Paintings by **Robert Cipriani GD** (Duxbury, MA) were featured in a three-person show on Expressionism held last winter at the Phillips Gallery in Sanibel, FL.

Ellie Schimelman AE (Brookline, MA) will offer an African textile workshop at the Cultural Center in Accra, Ghana, in August.

'61

LPK, an international branding and design firm founded by **Mort Libby GD** (Cincinnati), opened an office in London last September.

'62

Roger Mayer IL (Smithfield, RI) exhibited new works in an April show at the Wheeler School in Providence.

'63

Wilma (Parker) de Pavloff PT (San Francisco) has recently been conducting archival research on the work of artist John Parker, RWS, for the Royal Watercolor Society in London.

'64

Altered Books: Transitions and Transformations, an exhibition of work from the *Book of Hours* series by **Sherrill Hunnibell AE** (Rehoboth, MA), was on view earlier this year at the Fleet Library at RISD.

'68

Work by **Jillian Barber CR** (Jamestown, RI) was included in the 30th Anniversary Exhibition at Sun-Up Gallery in Westerly, RI.

'69

Two verse sequences by **Edward Baranosky PT** (Toronto) were featured in the October 2007 issue of *Lynx* Online Magazine.

The Two Great Commandments, an engraving by **George Delany GD** (Rehoboth, MA), was selected as a winner in the Works on Paper category of the 2007 Manhattan Arts International *Healing Power of Art* competition.

Jack Dickerson GD (Hingham, MA) showed paintings last winter in *Surf 'n' Turf*, a solo exhibition at the Pratt Library in Cohasset, MA.



Palazzo Vecchio by **Susan Hacker Stang '71 PH/MFA '74** (St. Louis) is one of her Polaroid emulsion lifts that illustrate *Encountering Florence-Firenze un Incontro* (2007, Palombi Editori, Rome and Webster University Press, St. Louis). The book pairs photographs of Florence shot from 2003-06 with passages by several writers, expressing "how the city of Florence has moved those that have allowed themselves to be touched by its unique essence," she explains. Work from the book has been shown recently at the Untitled Art Gallery in Florence and the Regional Arts Commission in St. Louis; a portfolio of the series is also featured on Polaroid's website. Susan is a professor and head of the photography program at Webster University in St. Louis.

photography post-callahan

Excerpted from a talk by Chip Simone '67 PH presented in conjunction with Harry Callahan: Eleanor, an exhibition that originated at the High Museum of Art in Atlanta, GA, and will be on view at The RISD Museum from November 7, 2008 through February 15, 2009. The museum asked Chip to reflect on his time with the late, great photographer and RISD professor emeritus.

I didn't become a photographer because of Harry Callahan. I knew long before I met him that I wanted to be a photographer. Back in the 1950s I had discovered the camera that my parents took on their honeymoon to the 1938 New York World's Fair. It no longer worked, but it had a two-piece pop-up viewfinder and that's what got me started: the viewfinder of a broken camera.

I was 19 when I met Harry Callahan at RISD, and from that day on the course of my life changed direction. Harry loved photography — how it worked, what it did and most of all, how it enabled him to see the world. It's all there in his pictures. But Harry didn't teach us what to do, he taught us what to be.

The photography world of the mid 1960s was very different from today's. To claim that photography was an art form invited ridicule even from the arts community. Minor White was at MIT, Walker Evans was at Yale, Henry Holmes-Smith was at Indiana, Aaron Siskind was in Chicago and Ansel Adams was preaching from a mountaintop out West. There were about 400 photography students in the country, and at RISD we were a small but potent group that included John McWilliams '65 PH, Linda Connor '67 PH, Bill Burke '68 PH, Jim Dow '65 GD/MFA '68 PH and Emmet Gowin MFA '67 PH. It was an amazing time.

More than 100 sketches and finished illustrations by **David Macaulay BArch** (Norwich, VT) were on view recently at The National Building Museum in Washington, DC in *David Macaulay: The Art of Drawing Architecture*. Malcolm Grear Designers, the Providence studio founded by RISD Professor Emeritus **Malcolm Grear**, designed the exhibition.

Artwork created by **Maureen McCabe SC** (Quaker Hill, CT) over a period of four decades was shown recently in the solo exhibition *Mythos: Assemblages* at the Parthenon Museum in Nashville, TN.

Vicky Wulff PT/MAT '70 (NYC) had a solo painting exhibition last winter at the Carrie Haddad Gallery in Hudson, NY.

'70

Fred Fassett BArch (Oakland, CA) has been elected president of the Board of Directors at Kala Art Institute in Berkeley, CA.

'71

Gerard Blouin GD (Holden, MA) will show oil paintings this summer at Jessie Edwards Gallery on Block Island, RI. He was profiled by *Worcester* magazine in May 2007.

Early Autumn, a painting by **Sam Gibbons PT** (Harbor Springs, MI), has been selected for permanent display at the future Harbor Springs [MI] History Museum. He is the owner of Island Graphics Studio Productions.

Two Too Large Tables, a public artwork created by **Ellen Schwartz Wexler AE** and **Allan Wexler BArch '72** (NYC), was chosen by *Art Forum* as one of the best public artworks of 2006. Constructed of brushed stainless steel and lpe wood, the two-part piece — installed in the new Hudson River Park in New York City — functions as a shelter and community table.



Recent work by Chip Simone: *Times Square, NYC* and *Man with Yellow Stairs, Atlanta*, both from 2007.

We didn't really learn photography from Harry — certainly not in the conventional sense. He created a unique Bauhaus approach to teaching that allowed us to learn it from ourselves. We did exercises that revealed the basic nature of the materials and equipment. Harry insisted that, above everything else, the purpose of a life in photography was to develop your own approach. He paid close attention to what we did and he used his awkward language code to guide us; we paid attention to the pictures that he said were "nifty" and stayed away from the ones that were "not so hot." We weren't asked to decode them, deconstruct them, analyze them, or think about them in a political context. He simply asked us to look at them. And then look again. We became students of ourselves.

If Harry said we made a good picture we went back into it to try to understand what was good about it in order to develop our intuitive senses. The answers were always in the pictures, and so were the questions. And they still are.

Now, more than 40 years later, it's still a very exciting time to be a photographer. At this point in my career I try to work like a jazz musician: impulsively, with spontaneity, improvising inside of structure and circumstance. I see pictures everywhere — all kinds of images that move and excite me. You reach a point in a life in photography when you recognize your feelings — when something resonates with a familiar timbre that tells you that a picture is present, or at least lurking nearby, and you have to go for that picture then and there. It's a visceral process that doesn't follow logic. But I'm a photographer. I make pictures. It's my work and it's my life. I learned that from Harry Callahan.

Chip Simone is a photographer who lives and works in Atlanta, where he has remained in contact with Eleanor Callahan in the wake of her husband's death in 1999.

'72

In February and March **Sandy Belock-Phippen PT** (Wenham, MA) exhibited paintings in *The Painted Year: A Visual Journal*, a solo exhibition at Studio 412A in Boston.

The Farnsworth Museum in Rockland, ME, hosted *Artists from Haystack and Pilchuck – a Gathering of Contemporary Glass*, a winter 2007-08 show featuring work by **James Carpenter IL** (NYC), **Dan Dailey CR** (Kensington, NH), **Howard Ben Tre MFA '80 SC** (Providence), **Robin Cass '93 GL** (Rochester, NY), **Dale Chihuly MFA '68 CR** (Seattle), **Dudley Giberson '67 SC** (Warner, NH), **Eric Hopkins '76 SC** (North Haven, ME), **Richard Remsen '74 SC** (West Rockport, ME), **Therman Statom '75 SC** (Omaha, NE) and **Toots Zynsky '73 GL** (Providence).

Jim Estes BArch (Jamestown, RI) of Estes/Twombly Architects recently won two Honor Awards from the Rhode Island Chapter of the American Institute of Architects. The awards were for a pair of houses on Block Island, RI, and a complex of grounds buildings for the Boston Golf Club in Hingham, MA.

Transport Design: A Travel History by **Greg Votolato BArch** (High Wycombe, England) was recently published by Reaktion Books in London. He is a professor of design at Buckinghamshire New University.

'73

Diane Birdsall AP recently opened a new location of the Diane Birdsall Gallery in Old Lyme, CT, where she features paintings and photography.

Robin Nuse PH (Hanover, NH) exhibited work in the *35th Annual Exhibition* of the Pastel Society of America, held last September in New York.

Last fall **Toots Zynsky GL** (Providence) had a solo exhibition titled *Shadows* at Barry Friedman Ltd. in New York.



Richard Kattman BLA '73 exhibited five large-scale abstract paintings in *eightvisions*, a show held last summer at the Attleboro [MA] Arts Museum. *Desert* (2007, acrylic on canvas, 6 x 6') is shown here. Another of his paintings — *Mona Vanna on My Mind* — was named Best in Show, Abstract at the museum's 2007 *Members Show*.

'74

Drawing Matters, a recent show at the Wheeler School in Providence, featured work by several RISD alumni and faculty, including **Luis Alonso IL** (NYC); **Leslie Bostrom '85 PT** (Providence); **Dennis Congdon '75 PT**, professor of Painting; **Alfred DeCredico '66 PT**, professor of Foundation Studies; **Bunny Harvey '67 PT** (Providence); **Thomas Lyon Mills**, professor of Foundation Studies; **Bobbie Oliver**, professor and head of the Painting Department; **Gwen Strahle**, assistant professor of Foundation Studies; **Daniel Talbot '96 PT** (Providence) and **Bohyun Yoon**, critic in the Glass Department.

Nudes and Figures: Gestures and Studies, a solo exhibition of oil paintings by **Candy Barr PT/MAT '75** (Warren, VT), was shown last fall at ARTSPACE in Burlington, VT. She currently teaches through the Vermont Arts Council, conducting workshops throughout the state.

Deborah Newhall IL (Providence) was the costume supervisor for the 2007 film *27 Dresses*, which was filmed in Rhode Island. Next up for her is work on *Hachiko: A Dog's Story*, which is also being shot in RI.

'76

Films by **Karen Aqua IL** (Cambridge, MA), **Joel Frenzer '00 FAV**, **Daniel Sousa '94 IL**, FAV critic **Steven Subotnick** and Assistant Professor **Agnieszka Woznicka** were screened in the 2007 *New England Animation* show at Boston's Institute of Contemporary Art.

Works by **David Calver IL** (Palm Springs, CA), **Chris Buzzelli '95 IL** (New York), **Nancy Kintisch PT** (Los Angeles) and **Eric White '90 IL** (Brooklyn) were included in *Brad Benedict's Sideshow*, an April exhibition at the Robert Berman Gallery in Santa Monica, CA.

Knitwear designer **Maria Ficalora PR** (New York) has recently created knitted costumes for the Radio City Christmas Show, *The Farnsworth Invention*, *Jersey Boys*, *Grease* and *The Little Mermaid on Broadway*.

A Napa Valley landscape painting by **Molly (Gorbett) Kruse TX** (Napa, CA) will be on display at the California State Capitol Building through June.

Recent paintings by **Leslie (Spofford) Russell PT/MAT '80** (Westford, MA) were shown last year in a solo exhibition at the Frame Shop Gallery in Hollis, NH. She is in her 20th year as the art teacher at Hollis Primary School.

Play, a year-long group exhibition featuring work by **Sally Mara Sturman PR** (Brooklyn), is running at Proteus Gowanus in New York.

'75

Artwork by **Eva Kwong CR** (Kent, OH) was featured in the inaugural July 4th exhibition of the American Ceramics Museum at the Fule International Ceramic Art Museum Complex in Fuping, China, where she is an advisor and resident artist. Her new work *Whisper to the Sky* was on view throughout last year in Massillon [OH] Museum of Art's *Outdoor Sculpture Show*.

Rory Marcaccio Schaffer AE/MAE '79 (Vienna, VA) presented work in *Recent Works*, a fall 2007 group show at the Fairfax County [VA] RR Museum.



'77

Deborah Gavel IL (Albuquerque, NM) curated *Giving Shelter*, a March exhibition at 516 Arts in Albuquerque designed to raise awareness of a related exhibition — The Cradle Project (www.thecradleproject.org), a large-scale installation opening in June. For The Cradle Project, an abandoned warehouse in Albuquerque will be filled with 1000 cradles and cribs made by artisans from around the world, to promote awareness and raise financial support for children orphaned by disease and poverty in Sub-Saharan Africa. *Giving Shelter* included work by Assistant Professor of Textiles **Liz Collins '91 TX/MFA '99 TX**, **Sally Condon MFA '90 PT** and **Andrea Zittel MFA '90 SC**.

Oil paintings by **Ricker Winsor** (Bradford, VT) were on view recently in a group show at the Oxbow Gallery in Northampton, MA. He also performed in the World Music Ensemble concert at Dartmouth College in February.

Boy with Gun, Homestead Rodeo Parade, Homestead FL (February 2007, Ultrachrome digital archival print, 12 x 16") by **Charles Corda BArch '75** (Coconut Grove, FL) was included in the *Spectra '07 Triennial National Exhibition* at the Silvermine Arts Guild. It's part of his series *How We Play*, which won an honorable mention in the *Prix de la Photographie Paris*.



Tayo Heuser '76 PT (Narragansett, RI) exhibited *Sealed Confessions* in January at H29, an artist-run gallery space in Brussels, Belgium. Shown here is a detail from *Untitled* (2007, ink on burnished paper, 76 x 44").

'78

Paintings by **Valerie Hird PT** (Burlington, VT) were on view in December at Red Dot in Miami.

Deborah Howard PR (Englewood, CO) exhibited encaustic paintings last fall at SACI Gallery in Florence, Italy.

George Lange PH (New York) and his wife Stephanie were thrilled to welcome their baby son Jackson Finn Lange on October 29, 2007 – the couple's second wedding anniversary.

Aija Sterns CR (Goose Creek, SC) recently had a solo show of gouache paintings titled *Reflections* at Plum Elements in Charleston, SC.

'79

Lee Lippert BArch (Palo Alto, CA) was awarded a Distinguished Presidential Citation from the American Institute of Architects for his work on California Disaster Preparedness.

William Price IL (Providence) has been selected for inclusion in the 2008 edition of *Marquis Who's Who in America*. He is a longstanding winner of the poetry.com amateur poetry contest and is currently working on his first books of poetry and photography.

'80

Work by **Jamie Hogan IL** (Peaks Island, ME) and **Charles Melcher '77 FS*** was displayed last fall as part of the faculty exhibition at Maine College of Art's Institute of Contemporary Art in Portland.

Works on paper by **Karla Knight PT** (Redding, CT) have been featured recently in *Paper*, a group exhibition at the Fisher Landau Center for Art in Long Island City, NY, and *Pierogi Flatfiling* at Artnews Projects in Berlin.

Lloyd Martin PT (North Providence) presented works at three shows last year, including a solo exhibition at the Stephen Haller Gallery in New York. In October he did a residency at Landfall Press in Santa Fe, NM.

Mara Metcalf PT (Providence), **Kristin Street TX** (Foster, RI) and **C.C. Wolf '84 PT** (Troy, NH) exhibited work in *19 on Paper*, a group show held last fall at Gallery 297 in Bristol, RI and Breslin Fine Art Gallery in East Greenwich, RI.

Peter Twombly BArch (Jamestown, RI) of Estes/Twombly Architects was presented with three awards at the 2007 design awards gala of the Rhode Island Chapter of the American Institute of Architects. The awards recognized his work on a Jamestown residence, the firm's Newport office, and a residential interior renovation in Newport.

natural grandeur

For *White Light*, a solo show that runs through May 25 at the Mint Museum of Craft + Design in Charlotte, NC, **Dan Clayman '86 GL** created an entirely new body of work — massive cast glass forms that play with light and shadow in subtle yet amazing ways. The simple precision of his geometric forms — an up-ended ring, a suspended slab, a leaning plane — paired with the purity and uniformity of the color and the majesty of their presence make for an elegant series that evokes a powerful sense of wonder.

Clayman's glass sculptures suggest "something... like a cloud solidified or a marble altar," notes Janet Koplos, an art critic and senior editor of *Art in America*, in the catalogue accompanying the exhibition. "You might also think of a salt lick or the face of a glacier or Harold Edgerton's famous close-up photograph capturing the splash of a drop of milk."

The artist himself says that with his *White Light* series he wanted to create the sense that he "wrestled a light beam out of the air to create a tangible object." This ongoing desire to capture light stems from a lifelong fascination with the magic of theater, which led to an intense stage lighting career before he discovered glassblowing in his mid-20s. At RISD in the early 1980s, Glass Department Head **Bruce Chao '73 SC/MFA '75** pushed Clayman and his peers beyond merely blowing glass — to think of it in more abstract, sculptural terms. Soon, he began experimenting with glass and metal, and working

with such other accomplished RISD glass artists as **Michael Glancy '77 SC/MFA '80**, a master of electroplating glass, and **Michael Scheiner MFA '80 SC**, with whom he fabricated a number of commissions.

Now that he has produced his most solid body of work to date, Clayman plans to continue working out of his new studio in East Providence, RI, to refine the "intensely difficult" process of casting and building oversized glass forms. "Availing himself of the many appealing qualities of his material (if not the most conventionally popular one, color)," writes Koplos, he "exploits density and pleasurable smoothness... in unexpected forms of elegance and perfection that make you see glass anew."



Working with the lost-wax glass casting technique that he has explored since the mid 1980s, Dan Clayman created a new body of work that strips the medium down to its essence. *Tapered Plane* (2007) and *Circular Object 1* (2004) are among the works currently on view at the Mint Museum.



Willow Buds #1: The Tale of Toad and Badger (April 2008, Little, Brown Young Readers), the latest children's book written and illustrated by **Mary Jane Begin '85 IL** (Barrington, RI), chronicles the childhood adventures of Toad, Ratty, Badger and Mole — the stars of Kenneth Grahame's classic *The Wind in the Willows*. This summer the National Museum of American Illustration in Newport celebrates *Willow Buds* and the centenary of *The Wind in the Willows* with an exhibition of paintings from both books. Mary is a senior critic in RISD's Illustration Department.

'81

The Brooklyn home of architect **Michael Gabellini BArch** was featured in the November 2007 issue of *Elle Décor*.

Kautter & Kelley Architects, the Wyomissing, PA firm where **Michael Kautter BArch** is principal and president, recently received the American Institute of Architects Pennsylvania Certification of Merit for Architectural Excellence. The award recognized the firm's work on the 5 Belmont, Wyomissing project.

Acrylic paintings by **Fred Lisaius IL** (Bellevue, WA) were on view last winter in *Family Tree*, a solo exhibition at the Susan Schomburg Gallery in Santa Monica, CA. He is working on a commissioned painting for Evergreen Hospital in Kirkland, WA.

Daniel Ludwig SC (Newport, RI) showed work with Anne Leone in *Figuring the Figure*, a November exhibition at Rhode Island College's Bannister Gallery.

ChicCleats, a company founded by **Sandra (Anderson) Nash BLA** (Santa Barbara, CA), was recently honored with platinum Awards for Design Excellence for its "cord cleat" and "cord pull" product designs.

Mary Ann Rossoni IL (Providence), owner and principal designer of Second Story Graphics, received several awards last year, including an American Design Award from *Graphic Design USA* magazine. She also released her sixth album, *Timber and Nails*.

'82

A painting by **Walton Ford FAV** (Southbridge, MA) was featured in the October 22, 2007 issue of *The New Yorker*.

'83

Stephen Dynia Architects, the architectural firm of **Stephen Dynia BArch** (Jackson, WY), was recently recognized by the American Institute of Architects with a Western Mountain Region Design Award. The honor was for the Jackson Hole [WY] Performing Arts Center.

'84

Work in several media by **Kenneth Goldsmith SC** (NYC) was shown in March at the Fleet Library at RISD.

Richard Goulis FAV (Providence) and **Richard Mandel MFA '05 SC** (Waterville, ME) both had work in *Shadow Show*, a recent exhibition at Real Art Ways in Hartford, CT.

Steven Kenny IL (Huntly, VA) has exhibited paintings recently in *Magical Realism*, a group show at the Abington Art Center in Jenkintown, PA, and the Easter exhibition at Galerie Brusen in Denmark.

Colleen Kiely PT (Rosindale, MA) had a solo show of drawings titled *Vanishing Point* at risd|works Providence.

New glass sculptures by **Fotini Vurgaropoulou SC** (Brooklyn) were included in a winter group show at UrbanGlass's Robert Lehman Gallery in Brooklyn.

'85

Todd Bartel PT (Watertown, MA) was recently appointed director of the Thompson Gallery at the Cambridge School of Weston [MA], where he teaches art. His work was included in *8 Artists 8 Books*, a group exhibition at the 5+5 Gallery in Brooklyn.

Gale Goff BArch (Newport, RI), an associate at Estes/Twombly Architects in Jamestown, RI, recently won an honor award from the American Institute of Architects' Rhode Island chapter for her design of a residential interior in Newport.

Poulin + Morris, the NYC graphic design/identity firm where **Douglas Morris GD** is a principal, recently completed work on a design program for WNYC Radio.

A "green design" home in East Sandwich, MA by Hajian Architects, the Watertown, MA firm where **David Hajian BArch '84** is principal, was profiled in a recent issue of *Cape Cod* magazine. David and his partner (and brother) Paul served as project architects on the contemporary-style residence, which incorporates natural materials and energy-saving features including custom linoleum flooring, superinsulated double walls and an energy-efficient HVAC system.

'86

Kim Fuller PH (Middletown, RI) has co-founded Wabi Sabi Woman, a business providing life workshops for women. She also maintains a photography business in Newport.

Patrick Hamilton GD (NYC) has been interviewing design celebrities, including *Met Home* editor Donna Warner and the cast of HGTV's *Design Star*, for the interiors blog apartmenttherapy.com. He worked recently as lead writer on a rebrand campaign for the city of San Antonio and is currently expanding his interior design practice.

Alissa (Barbakoff) Siegal IL showed oil paintings in a recent group exhibition at the Stone Studio's Our World Gallery in Stamford, CT.

'87

Mark Booth PR (Chicago) showed drawings, paintings and sound pieces in a solo exhibition titled *Suddenly one of the carrots asked*, held last fall at the Hudson Franklin Gallery in NYC. He is an assistant professor in the MFA/BFA writing program at the School of the Art Institute of Chicago.

Work by **Trine Gjaever IL** (NYC) was selected for two NYC exhibitions last fall: the *Allied Artists Exhibition* at the National Arts Club and the *Life Studio Traveling Figure Show 2007*, on view at several locations.

Illustrations by **Marcellus Hall IL** (NYC) are featured in two books published in 2008: *Things I've Learned from Women Who've Dumped Me* by Ben Karlin (Grand Central Publishing) and the children's book *Because You Are My Baby* by Sherry North (Abrams Books for Young Readers).

Matthew Kluber PR (Cedar Rapids, IA) received a National Science Foundation Grant for "Reformulating Media Computation with Functional Programming, Scripting, and Design Principles," a research initiative with co-principals Sam Rebelsky and Janet Davis. An assistant professor of art at Grinnell College, he also recently received a Harris Fellowship for *Firewire Pictures*, a series of work that explores the intersection of digital technology and painting.





Davenport 3pm (8 x 10") and other oil paintings by **Alexandro Santana BArch '87** (Savannah, GA) have been on view recently in Savannah galleries in *Savannah Squares*, a solo exhibition at the Jewish Educational Alliance, and *Seven from Savannah*, a group show at 2CarGarage. After combining painting with a career in architecture for 20 years, he now paints full-time.

'88

Bruce Collins IL (Los Angeles) created the cover illustration for the February 2007 issue of *A Bear's Life* magazine.

An illustration by **Kim DeMarco IL** (Providence) was featured on the December 24/31, 2007 cover of *The New Yorker*. She has been a regular contributor to the magazine since 1998.

Photographs by **Peter Goldberg PH** (Pawtucket, RI), **Michael Cevoli '04 PH/MFA '09** (Providence) and RISD Museum photographer Erik Gould were included in *Most Endangered Properties*, a recent group show at the Peerless Building Atrium in Providence.

Kevin Jankowski IL shared his experiences of growing up in a trailer and in a Frank Lloyd Wright House on the WGBH Radio (Boston) program *Morning Stories*. A video for the story was also produced for wgbh.org.

Allison Massari IL (Tiburon, CA) will have a solo exhibition this year at the Winfield Gallery in Carmel, CA. Last fall she was profiled in the *Marin Independent Journal*.

Last July **Jimmy Moss GD** (Burbank, CA) was elected to the board of AIGA/Los Angeles as co-vice president of education. He is a professor in the Design Program at Cal State LA and chair of the Design Option.

Casco Projects in Utrecht, the Netherlands hosted the official launch and symposium for *you can't judge a book by its cover*, a book from the *Another Publication* series co-edited by **Renee Ridgway GL** (Amsterdam).

Thomas Robertson BArch (Los Angeles) recently completed work on the Court Yard House, a "green-leaning" home; his work has been featured recently in *Dwell* magazine (12.07). He is a principal at Ripple Design and is starting a new business, PAD Outdoor, with **Eli Bonerz '89 AR** (Los Angeles).

Greetings from Jamaica: Wish You Were Queer, a novel by **Mari San Giovanni IL** (Coventry, RI), recently hit number one on Amazon.com's sales ranking of gay and lesbian books.

Adam Silverman BArch (Los Angeles) exhibited new ceramic pots last winter in a solo show at Pulliam Deffenbaugh Gallery in Portland, OR, and at Tomio Koyama Gallery's booth at Art Basel Miami. His work is available for sale at MATTER in New York.

'89

The National Association of Home Builders recently named **Joseph Gracco ID** (Cumberland, RI) of Modern Yankee Builders remodeler of the month. He was profiled in the February issue of *Qualified Remodeler*.

Performance and *Ursine*, two exhibitions of photographs by **Jill Greenberg PH** (Beverly Hills), were shown recently at the Fahey/Klein Gallery in Los Angeles.

Jon Naiman PH (Switzerland) recently had a solo photography show titled *Familiar Territory* at USM Bern in Switzerland.

Constructs, a solo exhibition of digital imagery by **Jon Slesinger PH** (NYC), was displayed in October on the show walls of 1133 Avenue of the Americas.

'90

odo, a design project by **Matthew Boyko ID** (San Francisco), was included in *Design and the Elastic Mind*, a recent group exhibition at the Museum of Modern Art in NYC.

Glass sculpture by **Karen LaMonte GL** (Czech Republic) was part of a group show at the Heller Gallery in New York last winter.

Shattering Glass: New Perspectives, a recent exhibition at The Katonah [NY] Museum of Art, included work by **Karen LaMonte GL** (Czech Republic), **Josiah McElheney '89 GL**, **Sharyn O'Mara MFA '92 GD** (Philadelphia), **Kait Rhoads '93 GL** (Richmond, VA), **Judith Schaechter '83 GL** (Philadelphia), **Arlene Shechet '78 CR** (NYC), and co-curator **Neil Watson '76 PR** (Katonah, NY), who is the executive director of the museum.

New work by **Michael Owen PT** (Providence), **Fitzhugh Baylies Karol MFA '07 CR** (Brooklyn), **Krzysztof Mathews '95 IL** and Glass Department critic **Bohyun Yoon MFA GL** (Providence) was featured last winter in *Four New Directions*, a show at the Chazan Gallery of Providence's Wheeler School.

Peter Barrett PT (Woodstock, NY) had a solo show at Supreme Trading in Brooklyn last fall.

full-circle support

As a sophomore, **Jennie Chong '10 GD** is just beginning to settle in to intensive work in the Graphic Design Department, and feels that she still has a lot to learn about RISD. But even as early as her first visit to campus — on "one of the hottest days ever in Providence," she remembers — the native of Plano, TX "knew I just needed to come here." That instinct has proved true for her, with a satisfying (and challenging) Foundation Studies year memorable for its outstanding faculty, particularly professors **Wendy Seller '75 AE** and **Tom Mills**. "The teachers really make the program here," she says. "They have affected my life as a whole, not just my art."

Jennie was delighted to learn that she has been selected to receive a 2008-09 RISD Alumni Association Scholarship, one of approximately 150 scholarships awarded annually to undergraduates in need of financial support. Funded exclusively by gifts from alumni, the scholarship is a valuable new component of RISD's financial aid offerings, and as Jennie points out, its benefits add up to more than the sum of its dollars. Gifts to the Alumni Association Scholarship fund prove that "RISD is not just a phase of college you go through, but a place where you build a community," she explains. "Personally, this scholarship has encouraged me to continue working harder because I know that RISD is backing me."



Jennie Chong and one of her 3D design projects in Foundation Studies.

'91

Karen Green SC (Devon, England) was recently awarded her first major public commission to complete a regeneration project in the historic district of Devon, England. She is the head designer for Greens Weathervanes.

The Baltimore chapter of the American Institute of Architects recently presented **Gabriel Kroiz BArch** (Baltimore, MD) with the AIA Design Award for the Hokyun Chun Residence and Studio. He was also honored by the International Rescue Committee for his contributions to refugee relief.

Work by **Charity Appell McNabb PT** (Ascutney, VT) was shown in *Salon 7*, a juried exhibition held last winter at seven gaits project space in Southbridge, MA. The gallery is owned and operated by **Monika Agnello PT** and **Demetri Kasperson IL**.

Holly Miller BArch (Cambridge, MA) led a ten-week competition for the Citizens School in Boston. The competition paired middle school students with architecture and planning firms in Boston to study improvements to two neighborhood subway stations.

Christopher Mills IL (Upper Hutt, New Zealand) completed work as visual effects supervisor and visual effects artist on *BlackSpot*, an independent feature film. He became a card-carrying member of the Visual Effects Society in 2007.

Illustrations by **Leah Oates IL** were featured in *Skipping the Page*, a group exhibition that ran last winter at the Center for Book Arts and Hun Gallery, both in NYC. Her work was also included in two group shows held last winter.

Work by **Mel Prest PT** (San Francisco) was selected for Edition #73 of *New American Paintings*. Her paintings were also included in recent group exhibitions in Munich, Miami, San Jose and Sausalito, CA. She teaches at the California College of Art in San Francisco and San Francisco City College.

'92

Pieter Van Tuyl, a furniture company co-founded by **Tod Babick ID** (Grand Rapids, MI), was featured recently in *Metropolis* magazine (10.2007).

In July 2007 **Sandra (Steen) Bartholomew IL** (Warner, NH) was named designer of the month on the Ampersand/Stampbord website (stampbord.com).

Samara Halperin FAV (Oakland, CA) recently won an award for outstanding achievements in the arts from the *San Francisco Bay Guardian*. Her stop-motion films such as *Tumbleweed Town* and *Sorry, Brenda* – a homoerotic take on *Beverly Hills 90210* – express her “ability to find gleeful joy in unexpected places,” wrote a reviewer for the paper.

Work by **Bo Joseph PT** (NYC) was featured in *8 Artists 8 Books*, a group exhibition at the 5+5 Gallery in Brooklyn, and in *The Essence of Things: Bo Joseph with African Art*, a winter solo show at Jason McCoy Inc (NYC).

State of Mind, a solo exhibition of paintings by **Sonya Sklaroff PT** (New York), was on view last winter at the Corning Gallery at Steuben Glass.

Robert Glennie BArch '94 (Los Angeles) is the design architect for a housing complex and community master plan for *Ecovillages*, a Los Angeles ecology/sustainable housing co-op. Currently in the design review stage, the project will create a new campus where courses in green architecture and ecology will be consolidated under one roof.



'93

Andrew Crawford SC (Atlanta) is showing new sculptures in *Pure Americana*, a solo exhibition at the Hunter Museum of American Art in Chattanooga, TN. The show will be on view through August.

Photography by **Wheaton (Bullock) Mahoney PH** was featured in the fall 2007 *Annual Member Exhibition* at the Light-house Center for the Arts in Tequesta, FL. She received the 2007 Mahlon Cline Award for Excellence for her photograph *Circle of Flight*.

Work by **Larissa Nowicki GD** (London) was included in *Paper-Thin-Worlds*, a recent group show at Man&Eve in London.

Gary Raymond BLA/MLA '93 (Minneapolis) received multiple honors at the Society for Marketing Professional Services' 2007 National Marketing Communications Awards: an Architectural Marketing Project Award, First Place Award for Specific Project Marketing, and Best in Show.

Photography by **Carolina Zorrilla PH** (Santa Monica, CA) was featured in *Art in the Shadow of Death*, a solo exhibition held last fall at the Farmani Gallery in Los Angeles.



Eggs, Coffee, Toast & Jelly (2006, oil on panel, 32 x 24") — one of the ongoing *Diner Series* of paintings by **Lora Shelley IL '94** (Catskill, NY) — was featured on a cover of *Chronogram* magazine last fall (10.2007). She recently wrapped up her second three-year exhibition at the American ambassador's residence in Kinshasa, Democratic Republic of Congo.

'94

Digital collages by **Sarah Greene Reed PH** (Austin, TX) were exhibited last fall in a solo show at the D Berman Gallery in Austin and at the Moody Gallery in Houston. She is a faculty member in the Digital Media Department at the Art School of the Austin Museum of Art.

Hedi Sorger PR showed painting work in a recent group show at the Patricia Faure Gallery in Los Angeles.

Jennifer Uhrhane PH (Jamaica Plain, MA) had a solo exhibition of photographs at Prudential Unlimited Realty in Jamaica Plain as part of the First Thursdays Art Series.

Woven intaglio and encaustic prints by **Lori Warner PR** (Lyme, CT) were on view last fall in *Coming About*, a solo show at the Chester [CT] Gallery. She is the owner and printer of L. Warner Print Shop and Gallery in Hadlyme, CT, and was the master printer for Monothon 2007 at the Center for Contemporary Printmaking in Norwalk, CT. Her works on paper will be included in the Flatfile at ArtSpace New Haven, CT.

'95

Chris Brown ID (Santa Barbara) was recently appointed to the position of vice president for design and development at ACI International in Los Angeles.

The *Camino Necklace* by **Rebecca Hannon JM** (Ithaca, NY) was recently acquired by the Mint Museum in Charlotte, NC. Last January she was the featured gallery artist at the Museum of Contemporary Craft Gallery in Portland, OR.

Nomi Kleinman TX (Brooklyn) has been hired as a full-time weaving professor at the Fashion Institute of Technology in New York. She retains a part-time position designing for American Silk Mills.

building beyond rubble

'96

Justin Auld IL (Portland, OR) recently exhibited his 144 *Crayon Drawing* at the Art Institute of Portland [OR] Gallery.

New sculptures and fabric pieces by **Amanda Barr PR** (Chapel Hill, NC) were on view last fall in a solo exhibition at Motel Gallery in Portland, OR.

Jen Corace IL (Providence) showed illustrations last fall in *Told You So*, a solo exhibition at Giant Robot New York.

Ellen Dessloch GD (Barrington, RI), art director for *Rhode Island Monthly*, led a recent project to redesign the magazine, along with associate art director **Dean Welshman '95 GD** (Wakefield, RI) and **Cyrus Highsmith '97 GD** (Providence) — designer of *Stainless*, one of the magazine's new primary typefaces.

David Hanson FAV (Dallas) recently announced plans for Zeno, a commercial line of personal robots to be released in 2009 by his company Hanson Robotics.

'97

Ellen Godena PT (NYC) completed a run of her 2007 performance series *ZeroPlan* with a fourth installment at The Tank theater in Tribeca. She co-produces the series with Boston musician Max Lord.

Leif Goldberg FAV (West Charleston, VT), **Jeff Carpenter '76 FAV** (Fall River, MA) and **Erin Rosenthal '98 FAV** (Barrington, RI) worked together to curate *Experiencing the War in Iraq*, a multimedia exhibition that ran in March at the Pawtucket Armory Arts Exchange and Machines with Magnets (Pawtucket, RI).

Having spent the last decade working in the political turmoil of war-scarred Lebanon, **Bernard Khoury BArch '91** is now considered "the most... internationally recognized architect in Beirut" and "one of the most sought-after architects in the Arab world," as Steven Zacks noted in *Metropolis* magazine (July 2007). "It's an absurd situation," the writer observes, referring to the anomaly of creating new architecture in the midst of ongoing destruction, "and Khoury has built his reputation celebrating it... through a series of provocative and cleverly designed clubs, bars, restaurants — and most recently, a high-end residential tower a block from the dividing line between East and West Beirut."

Among the many absurdities of Khoury's trajectory to the top is that he initially conceived of his escapist hangouts as *temporary structures* — buildings designed for obsolescence as neighborhoods were more systematically redeveloped in the post-war period. "Somehow, though, despite the constant building boom, they all survived," Zacks notes, "remaining popular party destinations through the periodic convulsions" of life in Lebanon.

Now, Khoury has consciously shifted to designing permanent structures throughout the booming Gulf region, with a steady flow of commissions for banks and apartment buildings in Beirut, shopping malls in Kuwait, a women's spa in Riyadh, a cascading glass office tower in Dubai and a new media center in Armenia. "The first project in the Gulf I honestly took out of pure need of punishment," he told *Metropolis*, using his characteristic irony. Most of the malls and motels he has since signed on for don't "really sound exciting," he says, "but when you look at every project in its context and scrutinize its conditions, sometimes you realize that it is extremely explosive and very charged."

Now that Khoury has immersed himself in helping to rebuild Beirut and other unsettled cities in the region, he is openly critical of much of the



Yabani (above) was built in 2002 to house a Japanese restaurant and bar. Refugees squat in the building next door, which was heavily damaged by shelling. The project "attempts to describe a fraction of a society living in marvelous denial," Khoury explains, as "spectacles of desolation become a backdrop to the more impressive spectacle of a society being entertained." Currently in progress, Plot #2251 near central Beirut (below) is slated to offer 3700 square meters of residential space on 11 floors.

redevelopment going on around him. In Beirut's central business district, for instance, most new construction mimics the French colonial architecture destroyed during the war and the ongoing unrest. "There is complete denial of the present, a complete denial of context," Khoury observes. The new buildings going up either "have absolutely no architectural value whatsoever [and are] totally stuck in a postcard romantic vision of the past, or [they're] the corporate crap that exists anywhere — a very sterile version of modernity."

Instead, he hopes his work provides a new vision for the Arab world. "[My] projects are very specific to the moments at which they were erected," he says. "They are not about remembering the war or romanticizing it or anything of that sort. They are about intervening on specific sites that are very sensitive and very charged."

For Khoury, the ongoing volatility of the region has become a way of life — and of approaching architecture. With political kidnappings and murders, uprisings by Hezbollah and retaliatory attacks from Israel, he can rarely count on calm in his world — or much of anything else. "This is the continuity of our daily realities," he says. "I live in a country at war, but... reconstruction is not something that starts at the end of events; that is a dangerous simplification of the political situation. [Still, the projects] I call vulgar programs — money-driven sometimes, and short-term — are often the most interesting. If you can maneuver through [them], you're really in tune and in touch with the realities of the society."

For more on Khoury's work, go to www.bernardkhoury.com.



'98

Ryan Scott Bardsley ID (Cambridge, MA) was recently rewarded \$2.2 million by the US Department of Defense to continue research in autonomous casualty simulation for the US Army.

Whitney Bedford PT (Santa Monica, CA) showed life-size portraits of Harry Houdini recently at Cherry and Martin in Los Angeles.

Boy in the World, a documentary by **Jessica Jennings FAV** (Providence), premiered in January on Rhode Island PBS.

A letterpress-printed postcard designed and illustrated by **Mandy McCorkle GD** (Providence) was selected for *Print* magazine's 2007 Regional Design Annual Competition Issue.

Leah Tinari PT (NYC) showed paintings recently in *Wet Paint*, a solo exhibition at eo art lab – a Chester, CT gallery run by **John Schroeder '92 BArch**.

Kim West PT (Los Angeles, CA) exhibited new work recently in *Stardust*, a solo show at Double Happiness Projects in Los Angeles.

'99

Teresita Cochran PH (Boston) is CEO of SMIT, which had a piece selected for the recent MoMA show *Design and the Elastic Mind*.

John Gauld PT (Westport, CT) designed and painted the murals for Bergdorf Goodman's 2007 holiday windows in midtown Manhattan.

Work by **Nathan Miner SC** (Somerville, MA) was on view recently at 13 Forest Gallery in Arlington, MA.

Brett Cody Rogers PT (Los Angeles) showed oil paintings in *Farewell to Human Scale*, a recent solo show at Praz-Delavallade in Paris.

'00

Amy Chan PT (Richmond, VA) has exhibited work recently in *Consumption Junction*, a group show at the Columbus [OH] College of Art and Design, and *Everywhere and Nowhere*, an exhibition at Denise Bibro Fine Art Platform Gallery in NYC, which also featured work by **Cheryl Molnar GD** (Brooklyn) and **Karla Wozniak PT** (Berkeley, CA).

Jaclyn Present IL (Burbank, CA) exhibited mixed-media sculptures in *Mad, Mad World*, a solo show held last fall at the M Modern Gallery in Palm Springs, CA.

Hannah Rogge ID (NYC) won a 2008 American Library Association Award for her book *Save This Shirt* (Stewart, Tabori & Chang). This is her second ALA award; she won last year for *Hardwear: Jewelry from a Toolbox* (STC Craft/Melanie Falick Books).

The Funeral, the first short film by **Sara St. Onge PH** (Toronto), premiered at the 2008 Sundance Film Festival.

Alexander Zaklynsky SC (Reykjavik, Iceland) is co-owner of Lost Horse Gallery, a gallery that opened recently in the city center of Reykjavik.

'01

Jaime Alvarez PH (Philadelphia) showed photographs recently in *Taking the Measure*, a solo exhibition at the Yo! Darkroom in Philadelphia.

Work by **Daniel Bruce SC** (Philadelphia) was included in *Every Artist is a Person*, a fall 2007 exhibition of work by MFA candidates at Temple University/Tyler School of Art in Philadelphia.

In winter 2007-08 RISD's Painting Department presented *A Bell is a Cup until it is Struck*, a show of works by New York-based recent alumni of the undergraduate Painting program. The participating artists were **Lucy Kim PT**, **Jonah Koppel PT**, **David Scanavino PT**, **Joe Bradley '99 PT**, **Daniel Lefcourt '97 PT**, **Megan Pflug '00 PT** and **Molly Smith '99 PT**.

Lauren Patton IL (Waynesville, NC) was recently awarded a residency at Burren College of Art in Ireland.

Ben Verhoeven '05 IL (Decatur, GA) and **Gaylord Schanilec** co-authored, designed and printed *Sylvae* (2007, *Midnight Paper Sales*), a catalog of 20 acres of trees in western Wisconsin. All the wood used in binding and printing the fine-press book came from the property surrounding the printing studio; the text was printed from metal type and all the images are from wood cuts and engravings. The 192-page book won the 2007 Gregynog Letterpress Prize in Oxford, England. *Long grain of black walnut* (*Juglans nigra*, spec. 013) is shown here.

'02

Work by **Eric Ayotte PT** (London) was included in *Foreign Body (IES)*, an exhibition held last summer at White Box in NYC.

Andrew Kennedy IL (Long Island City) exhibited work in *Paper, Paint, Clay: The Best of 2008*, a recent group show at the Rhonda Schaller Studio in New York.

Paintings and prints by **Kyla Luedtke PR** were featured this winter on the *Southeast Review* website.

As an architect for the Kuwait-based luxury store Villa Moda (www.villa-moda.com), **Abeer Seikaly BArch** has worked on projects with designers including Marcel Wanders, Jaime Hayon and Stark.

Jacquelynn Woodley IL (Fort Collins, CO) is co-founder of The Gallery Underground, a gallery that opened recently in Fort Collins.



Maureen Jeram '93 PT (Berlin) showed *Coffee* (2007, oil on linen, 190 x 140cm) and other paintings in *The Other Side of Sleep*, her second solo exhibition at Galerie Koal in Berlin. Her work has also been included in recent shows at Cokkie Snoei gallery in Rotterdam and Paul Kopeikin Gallery in Los Angeles.

'03

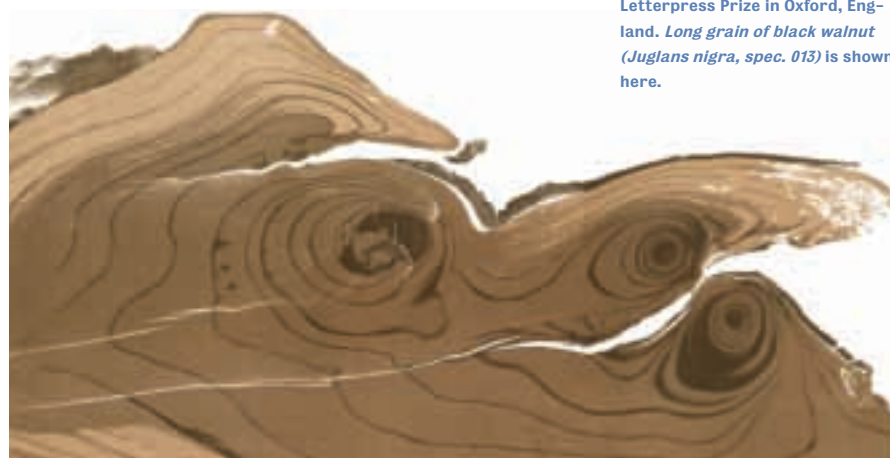
Nina Freudenberger BArch (Brooklyn) was featured in the Personal Style section of a recent issue of *Lucky* magazine (01.2008).

Jessica Hess IL (Boston) exhibited paintings in *It's Gouache & Gouache Only*, a recent group show at the Andrea Meislin Gallery in New York. Her work was also featured in a recent edition of *New American Paintings*.

Work by **Jane Kim PR** (Oakland, CA) was featured in *COLORS: A Winter Carnivale*, a group show at the Conservatory of Flowers in San Francisco's Golden Gate Park.

Somos Primos/We are Cousins, a bilingual children's book illustrated by **Christina Rodriguez IL** (Stillwater, MN) and written by Diane Gonzales Bertrand, was published in October 2007 by Arte Publico Press.

Last Spring **Jennifer Rolfelma GD** (Providence, RI) opened CreativeChica Open Gallery, a gallery hosted by Joneso Design in Central Falls, RI, and open by appointment.





“The best thing I learned from RISD is how to keep pushing an idea further than would be obvious,” says textile designer **Rachel Doriss '99 TX**. “That comes into play in my job a lot.”

Much to her surprise, the weaver who once dreamed of running a small fiber studio in a far-flung rural hideaway opted instead for a career in New York. She is now the associate design director at Pollack, an award-winning studio that designs fabrics for the interiors market; almost a decade into it, she couldn't be happier with her decision.

When Doriss transferred to RISD after two years at a large university, it was on the heels of researching textiles and fiber arts programs all over the country. She chose RISD's undergraduate program because “it seemed the most serious.” Though her hunch was well founded, she was still “surprised at how far I was pushed design-wise,” she says. “I think I went a lot further than I would have gone elsewhere.”

Doriss admits to arriving at RISD with “very earthy” notions about fiber art, but made a 180-degree turn when her professors helped her see the full range of possibilities in the textiles industry. “Once we visited New York and I saw what was going on there, I knew I had to try it,” she says.

The designer now works with a handful of employees and freelancers at Pollack, including founder **Mark Pollack '76 TX**, (see also page 33), who is being honored with RISD's Athena Award for Alumni Achievement at an awards presentation in NYC on April 10. She has also enjoyed collaborating with him

in recent years on two extraordinary lines of fabric inspired by objects in the collection at the RISD Museum of Art. Keeping a connection to RISD and to fellow alumni is important, she says, because “in my case it was a real gift to be able to go there. I still think it's the best choice out there; RISD prepared me for what I'm doing now — both technically, which is huge, and in being able to see, which is also huge.”



Hmong Plush is one of Rachel Doriss' designs inspired by the collection at the RISD Museum of Art.

'05

Kevin Cunningham BArch (Providence) received a \$5000 award from the Rhode Island State Council on the Arts to continue his work on surfboard designs.

Drew Gillespie PT, Phil Cote PT and **Nick Payne PT** have opened Bobo's on 9th, an new gallery in Philadelphia. Last February the gallery featured a show by **Lindsay Beebe '04 PT** (Philadelphia).

Matt Grigsby ID (Providence) and **Joe Gebbia ID** (San Francisco) have launched ecolect .com, a free online library of sustainable materials for artists and designers.

Work by **Conor Thompson PT** (Los Angeles) was included in *Church and Lawn*, a group show held last fall at Tiny Creatures in Los Angeles.

'06

Brandon Herman PH (Los Angeles) has shown new work in several exhibitions recently, including *The Crooked Mirror* at Envoy Gallery in NYC and *The Appearance and the Thing in Itself* at Galerie Griesmar et Tamer in Paris.

Alice O'Neill PR (Providence) showed prints in the *New Faces Invitational* exhibition held last November at the DeBlois Gallery in Newport, RI.

Shelves by **Theo Richardson FD** (NYC) were included in the “New + Notable” section of *I.D.*'s November/December 2007 issue.

'08

Need You | Need Me, a mobile communications project co-developed by **Andrew Haarsager ID**, won second place in Telenor and Ericsson's 2007 Excitera Innovation Challenge in Stockholm. The project is currently in the running for the 2008 Mobile Rules! Competition.

interrupted, a degree project by **Jaekyung Jung GD**, has been accepted for the 23rd International Biennial of Graphic Design and will be exhibited from June to October at the Moravian Gallery in Brno, Czech Republic.

'04

A photograph by **Kate Benson PH** was featured recently on the BBC's “Have Your Say” website.

In fall 2007 **Aymar Coopacatty SC** exhibited mixed-media work at RISD's Ewing Multicultural Center for the first in a series of alumni gallery exhibits.

Charlotte Bakeman Has Her Say, a children's book illustrated by **Kimberly Rose Batti IL** (Wyckoff, NY) and designed by **Christina Gruppuso '01 FAV**, was published in November 2007 by Little Pear Press.

Anthony Dihle GD (Takoma Park, MD) exhibited ten posters in the group show *Sweet: the graphic beauty of the contemporary rock poster*, held in the spring at the Art Gallery of the University of Maryland College Park.

Naked Ambition: An R Rated Look at an X Rated Industry, a photographic look at commercial pornography by **Michael Grecco FAV** (Santa Monica, CA), was published last year by Rock Out Books. Accompanying exhibitions were held at the Stephen Cohen Gallery in Los Angeles and at Photo Miami/Art Basel.

Robert Lange PT (Charleston, SC) was recently named one of the top 30 artists in the country by *New American Paintings*. He has owned and operated the Robert Lange Gallery in Charleston for three years.

Amy Longenecker-Brown PT (Brooklyn) recently had her first solo exhibition, titled *Miracle House Ruminations*, at Monya Rowe Gallery in Chelsea, NY.

Sean Thomas IL (Providence) exhibited paintings recently in *Signs of Life*, a solo show at the Copley Society of Art in Boston.

portfolio



Stephen Petegorsky MFA '80 PH (Florence, MA) exhibited *Margarito Rodriguez, El Paraiso, Honduras* and other images last winter in *Step by Step: Photographs from Walking Unidos*, a show at the Book Arts Gallery of Smith College in Northampton, MA. About a decade ago, Stephen began using his camera to document the work of the Polus Center for Social and Economic Development in Nicaragua, an organization that supports programs for people with disabilities. He seeks to raise awareness about landmine victims in Central America and raise funding for their treatment.

unions

Sydney Schremser MArch '04 and Todd Thiel on September 22, 2007. Boston, MA.

Carolyn Campbell MLA '07 and Joseph Jeswald on August 18, 2007. Providence, RI.

deaths

Peter Feresten MFA '74 PH of Fort Worth, TX on September 16, 2007.

notes

'72

Muriel Angelil MAE TX (Amesbury, MA) showed paintings last winter at the Gallery at Chelsea City, MA.

Lauren Shaw MFA PH (Belmont, MA) recently exhibited her photographic installation *Maine Women: Living on the Land* and an interactive film at the Huret & Spector Gallery in Boston.

'74

The North Carolina State University Gallery of Art recently purchased two pieces by **Don Davis MFA CR** (Johnson City, TN) for its permanent collection. In July he will conduct his second two-week summer workshop at Spannocchia in Tuscany, Italy.

Susan Goetz Zwirn MAT AE

(Pt. Washington, NY) has been promoted to associate professor and graduate director of Art Education at Hofstra University.

Extinct Birds Previously Consumed by Humans (From the Brink of Extinction to the Supermarket), a solo exhibition of mixed-media sculptures by **Christy Rupp MAT AE** (NYC), was shown recently at the Frederieke Taylor Gallery in NYC.

'77

Jenny Holzer MFA PT (Hosick Falls, NY) is presenting her first interior light projections in *Projections*, a solo show at MASS MoCA in North Adams, MA. The show is open through the fall.

'79

Dance Hall Incident, an album by **April Rapier MFA PH** and her band Sugar Bayou, was named one of the top ten Houston artist albums of 2007 by *The Houston Chronicle*.

'82

Brad Buckley MFA SC (Sydney, Australia) has received \$100,000 from the Discipline Based Investigation Fund, an initiative of the Australian government's Department of Education, Science, and Training, for his cooperative research project "Future-Proofing the Creative Arts in Higher Education: Scoping for Quality in Tertiary Creative Arts Learning, Teaching, and Research Training."

Arno Rafael Minkinen MFA '74 PH (Andover, MA) exhibited *Self-Portraits from Four Decades* last fall at Barry Friedman Ltd in Chelsea, NYC; *Nude Descending a Staircase, 2005* is shown here. He recently received a special jury prize for his *Saga* exhibition in China, as well as the Finnish State Art Prize for photography. His book *Saga: The Journey of Arno Rafael Minkinen* was published in 2005 by Chronicle Books.





Martha (Collins) Armstrong MAE
'63 showed *Sicilian Vase 4* (19 x 21") and other recent oil paintings in a fall 2007 solo exhibition at the University of Tulsa's Alexandre Hogue Gallery.

'83

Allison Newsome MFA CR (Warren, RI) was the artist in residence at the Beatrice Wood Center for the Arts in Ojai, CA in April. A solo exhibition of her work runs through May at the center.

'85

Uncovered Grove, a solo installation by **Wendy Wahl MAE** (West Kingston, RI), was on view recently at the Newport [RI] Arts Museum.

'88

Robert Martin MFA PH (Cranston, RI), chair of the art department at the Wheeler School in Providence, recently installed a tile mural in tribute to Mary C. Wheeler on an exterior wall of the school. Wheeler, an American Impressionist artist, founded the school in 1889.

'90

Amy Cohen MFA PR (Providence, RI) showed work recently in *Elusive Geometries*, a group exhibition at the Chazan Gallery of Providence's Wheeler School.

'91

From Philadelphia to the Front, a documentary by **Judy Gelles MFA PH** (Philadelphia), was screened last fall at the Yerba Buena Center for the Arts in San Francisco. Her photography and video work were also included in last winter's group show *Encapsulated Time: Age, Image, and Rock 'n' Roll*, at the Levy Gallery for the Arts in Philadelphia.

Daphne Minkoff MFA PT (Seattle) curated *Glue*, a group exhibition of collage artists that ran this spring at the Linda Hodges Gallery in Seattle.

'92

Frank Poor MFA SC (Cranston, RI) exhibited mixed-media work in *Shadows and Signs*, a solo show at Coastal Carolina University in Conway, SC.

'94

Susan Brearey MFA PT (Putney, VT) exhibited oil paintings recently in a group show at the Gerald Peters Gallery in Santa Fe, NM, and in *The Intrinsic Worth of Animals*, a solo show at the Muse Gallery in Jackson, WY. She is on the visual arts faculty at the Putney [VT] School.

Photographs by **Torrance York MFA PH** (New Canaan, CT) were on view last winter in the *Director's Choice Exhibit* at the Silvermine Guild Arts Center in New Canaan.

'95

Shahzia Sikander MFA PT/PR (NYC) had a solo exhibition of paintings at the Museum of Contemporary Art in Sydney from November to January.

'96

Halfway Between the Gutter and the Stars, a collaboration by brothers Ivory and **Shelter Serra MFA PT/PR** (Bolinas, CA), was shown last winter at Secret Project Robot in Brooklyn.

'97

Cradle of Silence, a solo exhibition of the work of **Nermin Kura MFA CR** (Providence), was shown last winter at Gallery Apel in Istanbul, Turkey. She is an associate professor of art and architectural history at Roger Williams University in Bristol, RI.

Julie Mehretu: City Sitings, an exhibition of paintings by **Julie Mehretu MFA PT/PR** (NYC), was on view from November to March at the Detroit Institute of Arts.

'98

Kristin Undhjem MLA (Telluride, CO) opened gardenstore, a garden boutique and nursery, in Telluride in 2006. She has been operating the landscape architecture firm KSLAcorp since 1999.

'99

Rob Nadeau MFA PT/PR (Brooklyn) co-curated *Accident Blackspot*, a group exhibition held last winter at Galerie Markus Winter in Berlin.

'00

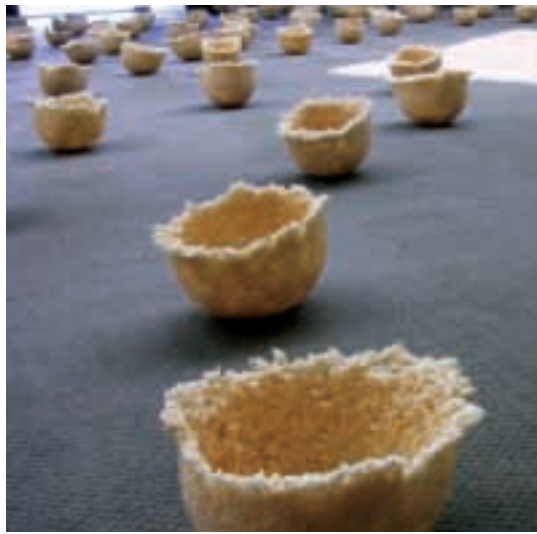
Michele Jaquis MFA PH (Los Angeles) showed recent photographs in *we still do not have to inherit everything they leave for us*, a solo exhibition held at LAAA/ Gallery 825 in Los Angeles.



Shepard Fairey '92 IL is the first to admit that promoting a mainstream presidential candidate seems a bit out of character for him. "You might be saying, 'Supporting a political candidate, paying for ads, what is Obey [Giant] thinking?'," he asks on his website. Best known for peppering the world with stylized portraits of Andre the Giant through the Obey Giant street art phenomenon, he recently created a poster that renders Barack Obama's face in shades of red, white and blue in his signature style, with PROGRESS and HOPE emblazoned underneath.

As with most of Fairey's limited-run prints, the poster sold out quickly - but with the unmistakable image popping up at campaign rallies across the country, the candidate was impressed and commissioned a new version of the poster to sell through his official website. Called CHANGE, the second print was also used to launch the campaign's Artists for Obama gallery (http://store.barackobama.com/Artists_for_Obama_s/1018.htm), which includes a message from Fairey explaining, "I wanted to make an art piece of Barack Obama because I thought an iconic portrait of him could symbolize and amplify the importance of his mission.... I have made art opposing the Iraq war for several years, and making art about Obama... is like making art for peace. I know I have an audience of young art fans and I'm delighted if I can encourage them to see the merits of Barack Obama."

Additional visual support for the Obama cause has been indirectly provided by font designer Tobias Frère-Jones '92 GD of Hoefler & Frère-Jones. When the Obama campaign selected their Gotham typeface for its logo, it was a "mini-coup," says Jessica Bennett in *Newsweek* (4.7.08), because the font choice has contributed to what "designers say is the best crafted of any politician's [brand] in history."



Adrienne Noelle Werge MFA '03 PH (South Bend, IN) installed her piece *For Such a Time as This: Remembering Vietnam in Artists and War*, a winter exhibition at the North Dakota Museum of Art. Consisting of 240 helmets made of rice scattered randomly across the gallery floor, the installation "is about loss, identity and parents," she explains. Adrienne is also contributing work to The Cradle Project (see note for Deborah Gavel '77 IL), on view this summer in Albuquerque.

'01

Photography by **Natalie Almadra MFA PH** (Brooklyn) is included in the 2008 Whitney Biennial, which runs through May.

Cynthia Farnell MFA PH (Conway, SC) had a solo exhibition of drawings last fall at the Hera Gallery in Wakefield, RI. She is an assistant professor at Coastal Carolina University in Conway, SC and director of the university's Rebecca Randall Bryan Gallery. In May 2007 she received the Best Arts Criticism Award from the Rhode Island Press Association.

'03

David Allyn MFA CR (Providence) received a Rhode Island State Council of the Arts Fellowship in 2007, and exhibited work in the winter 2008 RISCA Fellowship Exhibition at Machines with Magnets in Pawtucket, RI.

Paintings by **Erin Harmon MFA PT** (Pawtucket, RI) were exhibited recently at the Parthenon Museum in Nashville, TN.

Express Emotions, a video by **jecca MFA PH**, was included in a traveling exhibition last year. The premiere screening was held at the Van Brunt Gallery in Beacon, NY.

'04

Designs by **Alissia Melka Teichroew MID** (alissiamt.com) have been featured in recent exhibitions in the Netherlands, NYC, Denmark and Italy. She has designed new products in collaboration with Charles & Marie Inc., Studio Jan Habraken, and Van Esch BV.

As project architect at Anmahian Winton Architects in Cambridge, MA, **Sydney Schremser MArch** (Boston) recently received a Progressive Architecture Award for the Community Rowing Boathouse Project in Boston.

'05

Lori Hepner MFA DM (Pittsburgh) received the Leon A. Arkus Award for her piece *Nebulous: Spasm: 1*, which was included in the Carnegie Museum of Art's *Associated Artists of Pittsburgh Ninety-Seventh Annual Exhibition*. She showed prints in several exhibitions in the past year.

In recognition of her *White Light Fabric and Jacket*, **Della Reams MFA TX** was presented with the ATEXINC 2007 Award of Excellence at the International Textile and Apparel Association Conference. She also received a Surface Design Association (SDA) Award of Excellence in Surface Design for her *Solar Plexus Dress*; the award was presented at the SDA conference last June.

'06

Inventing Worlds, a solo exhibition by **Emmy Cho MFA PT** (Providence), was held last winter at Abba Fine Arts in Miami.

'07

Wallpaper magazine's 2007 list of up-and-coming graduate artists included several recent graduates of RISD's MFA programs: **Ann Adams MFA FD**, **Ricky Allman MFA PT** (Kansas City, MO), **Sophia Khwaja MFA PR** (Islamabad, Pakistan), **Geon Dong Kim MFA DM** (Cranston, RI), **Casey McDonough MFA CR** (Allentown, PA) and **Robert Pfrommer MFA FD** (Providence).

Pixilerations [v.4], a media showcase held during last fall's FirstWorksProv festival, featured installation and video work by **Bokyung Jun MFA DM** (Lansing, MI), **Cristobal Mendoza MFA DM** (Providence), **Anjali Srinivasan MFA GL**, **Stephanie Williams MFA SC**, **Robert Ladislav Derr MFA '02 PH** (Columbus, OH) and **Ian Gonsler MFA '06 FD** (Providence).

Work by **Javier Pinon MAT** (NYC) will be included in the 2008 Beijing Biennale. He also had a solo show last winter at the Branch Gallery in Durham, NC.

'08

Matthew Clowney MFA PH exhibited photographs last fall in *Families*, a solo show at the Allen Gallery in New York.

Ceramic works by **Sean Gallagher MFA '08 CR**, **Sarah Gross MFA '09 CR**, **Noel O'Connell MFA '09 CR** and **Sarah Rossi '09 CR** were selected for inclusion in the National Conference on Education for the Ceramic Arts' 2008 *Regional Student Juried Exhibition*, held in March in Pittsburgh.

wrapping up

When **Gayle Wells Mandle MFA '97 PT/PR** first arrived at RISD in 1993, it wasn't as a student, but rather as the wife of the School's new president. A practicing interior designer, she also enjoyed painting, and just prior to moving to Providence, had been taking classes with **Bill Christenberry** at the Corcoran Gallery in Washington, DC.

"When we moved here I knew I wanted to continue painting," Gayle says. "I had always felt that my interior design work was like painting in 3D, but every time I thought about giving it up to fully concentrate on painting, I would yearn for another commission and the opportunity to work with clients in designing their own spaces."

Still, within two years of living on campus and getting to know RISD students and faculty, Gayle entered the Painting Department as a graduate student. "I had actually applied to RISD years ago as an undergraduate, but ended up going to Skidmore instead," she says. "When I was accepted as a grad student, I was delighted and very excited. But the faculty were very serious that I make a full-time commitment to it - that I not do this program on a part-time basis."



Gayle Mandle's signature technique of layering materials, colors and text results in rich and evocative panels "like pages of a journal," she says. *Gossip* and *Oma/Lala/Kumbaya* (both 2008, mixed media on panel, 12 x 12") were sold during the February benefit exhibition.



Once fully immersed in her studio work, Gayle began both to understand her lifelong urge to paint and to find her own voice. "I chose to be a student because I still want to learn," she says. "And I still feel like a kid inside. Other than marrying Roger, going to RISD was the best decision I've ever made."

Now, although she still values her interior design work, Gayle naturally turns to painting as an outlet for complex thoughts and feelings. She prefers the process of layering — a technique she also uses in her design work — when creating her typically textured, mixed-media paintings. An avowed "political junkie" who tunes in to NPR news in her studio, she is also influenced by the visual noise of graffiti, billboards and TV newscasts.

Last fall, in preparing for the next phase in her life, Gayle decided to pack up her Bowen Street studio in a thoughtful, reflective manner. In the process of sifting through the many found objects, textiles, ledger books and ephemera she has collected over the past 15 years, she created a series of new autobiographical works - in part to help raise funds for a new RISD scholarship fund.

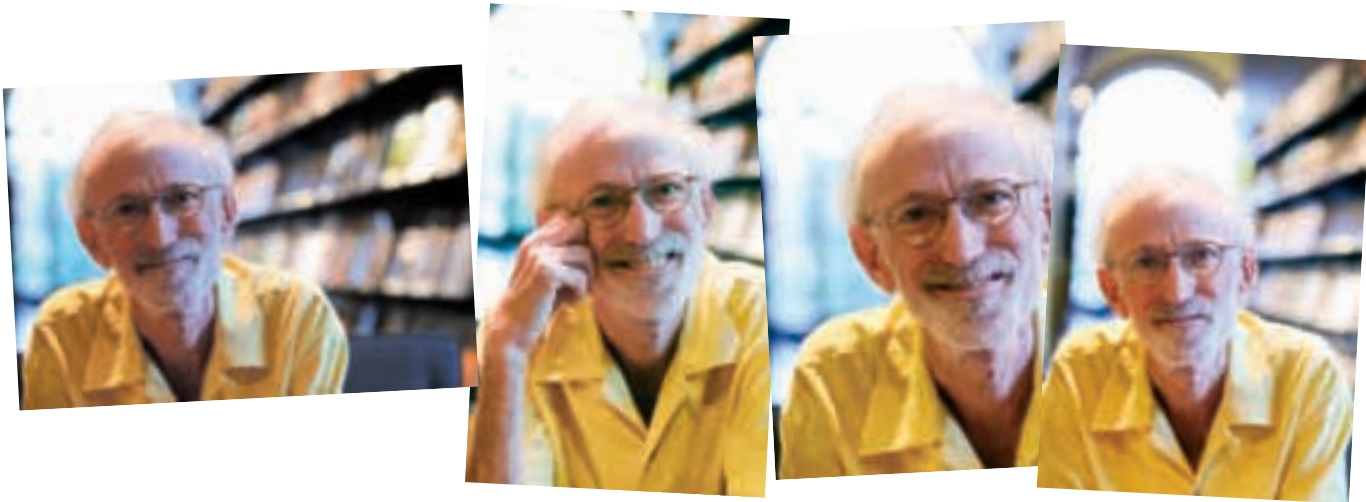
"Each of the 12-inch-square mixed-media panels I made are like the pages in a journal," Gayle says. "In my work, I illustrate the shouts and whispers of daily life through multiple layers of glued text and textures, along with washes of paint. Since I enjoy playing with words, many of these pieces have handwritten notes, and I have literally and figuratively tied them together so that they look like bundled packages." Together, the series conveys the ongoing journey and sense of discovery the Mandles have shared during their years at RISD.

As she and Roger entered their final semester at RISD, Gayle's paintings were exhibited at the Memorial Hall Painting Gallery and are also available for sale at www.risdworks.com. Proceeds from the sales benefit the Roger + Gayle Mandle Scholarship Fund, which will help give needy students access to a RISD experience like hers — what Gayle sums up as "the most stimulating period of my life."

Contributions to the Roger + Gayle Mandle Scholarship Fund are welcomed at www.risd.edu/give.

alternative views

insights, attitudes, reflections



50 years and counting

Professor of English Mike Fink talks about half a century at RISD

When and why did you start teaching at RISD?

I started my career at RISD in September of 1957. My uncle [the late Professor Emeritus] **Herb Fink '48 PT** was teaching here, and the Division of Liberal Arts was small, just beginning to fulfill the GI Bill's requirements of the school. When I came I was free, in some ways, to help design the English Department. I had only recently completed my degrees from Yale and Harvard, so RISD came into my life just when I needed it, and just when it needed me.

You've said you thought of going into science because you love birds and animals in general, yet you chose English instead. Why?

By the time I was in college I realized that what really attracted me was something called poetry. I'm not sure that anyone else would define poetry the way I do. I define poetry not as a thing that you necessarily write, but as a thing that you perceive or even feel, and part of it – if you want to translate it into human social terms – is to be able to deal with ambiguity....

How have you seen RISD students change over the years?

Everybody always asks me that! In the 1950s, my first students were glad to be in college and were mostly local; there were two RISD's, really: the fine arts RISD from wealthier families in Newport and the machine design RISD from working-class Pawtucket. In the great, you know, *Hairspray* world of the '60s, I would say students were not so much inventive as they were daring – into graffiti art, the antiwar movement. The genius of the '70s was that protest poetry was out, but now you had the

melancholy recognition of the majesty of nature. In the '80s – the Reagan years, prosperity – that's when departments were growing, which offered the promise of a share of the pie. Did students change? Not really. Like a parent or a grandparent, I find equal value in students no matter when they come into my realm and inspire me.

How do you remember the '90s?

The '90s – wasn't it labeled in the press "the ME decade"? – was also the decade when I found my only favorite TV show (other than my former student Seth MacFarlane's *Family Guy*, of course, because I love Seth and he loves me): *South Park*. I LOVE *South Park*. And that's a product of the '90s. So the '90s had a kind of in-your-face humor that I think was very creative.

Why have you chosen to use film so often in teaching English at RISD?

Maybe I teach too personally, but I'm really great at discovering great new films and wonderful old movies. Analyzing movies is a great way to teach writing, as well as perception in general. A great film – a subtle and ironic and worthwhile film – can be broken up and reconstructed from so many points of view that we never run out of things to say. I don't ever want to replace words with something else, but to see words fulfilled through visual imagery appeals to me. So you have word and image, and that's basically what a RISD education is all about.

Do you teach your students critical thinking skills?

I think critical thinking is great, except that people who use that term usually mean *rhetorical* critical thinking. I'm a believer in metaphorical thinking. And I'm a believer – as in *South Park* – in the fact that the less you control your thinking the better off you are, because if you don't have a sense of the absurd – if you lose your sense of humor and start using bigger words and fancier references, you're going to lose your soul. For instance, poetry is not really about critical thinking, it's about whimsical thinking (and maybe "whimsy" is a bad word, too, but I like it). You know, I have a lot of eccentricities that are built in. I like everything small, so critical thinking is too big a phrase for me. I like *thinking*, or *music*, or *dreaming*.

You've seen eight RISD administrations – any thoughts about various presidential styles?

When I came here, **John Frazier '12 PT** hired me and then even gave me a raise. So, every time I would see the bust **Gil Franklin '41 SC** sculpted of him in the old RISD library, I would remember his pleasant years of administration [1955–62], from my point of view – although, there were students who were terrified of him and faculty members who were intimidated by him.

Then, when **Albert Bush-Brown** came [in 1962] he was more of a vested, suited person – less informal – and we got along well. But the truth of the matter is that it has been my fate in life to get in trouble sometimes, and when I objected to tearing down Carr House, which was a plan during his administration, he tried to fire me. He sent me a letter saying I wouldn't be re-hired, but then he left and my contract sailed through.



I happened to like **Talbot Rantoul** [1969–75] very much because in the 1960s when campuses were being torn apart by student anger, no one was really angry at Talbot Rantoul – maybe because his daughter was a student here, or maybe because he was a businessman and businessmen can be surprisingly tolerant. He seemed to be able to take things in stride.

The **Lee Hall** years [1975–83] – well, I felt that she was going to be a very creative force, but she was a disappointment to people who had placed too much faith in her at that time. She did leave us with a union, which is a very positive thing for me and for many of my colleagues.

The current administration, with its dream of a new campus, perhaps reflects the presence of so many students from throughout the world who think of RISD as the *best* college. The elegance of the Mandle family is perhaps part of a cultural concern for improving American taste and making it shine in the world.

You know, a teacher can stay here for 50 years like me; an administrator can't, because he or she symbolizes the hopes of that moment in the evolution of a college.

What has kept you at RISD for more than half a century?

Well, every day is really a miracle at RISD. Although I've had my troubles here (we have troubles in every piece of our lives; I tell my children that), I don't think there's been a day when I haven't found a little sunbeam of joy, because I think this is a blessed place. That may sound corny and sentimental, but it's how I feel.

What do you see in RISD's future?

With RISD – like any human being – memory is a good thing; to some extent we have to free ourselves from it, but we also have to be inspired by our past. I'm a worrier and I worry sometimes that we may forget our origins in the intimate and the local. In order to retain its charm, its charisma, its special magic, RISD has to keep its mind not only on the dazzling successes, but on the little successes of students each day, with each insight that's formed as they struggle with bizarre and wonderful assignments.

Are you still planning to teach next year?

People say, "Are you still teaching?" and I say, "Stop using the word 'still.'" I hope to go on teaching for a long time, here, at RISD. I think I'm of use to my students – perhaps not to all of them; I hope to most of them; I know to enough of them so that even on my little deck in Narragansett, where I spend my summers, even there, students from the Class of 1965, from the Class of 2007, come to visit me because they know we'll have some laughs together, they know we'll have some little poetic moments together, they know I'll show them around, maybe canoe them along the Narrow River....

I'm a very nostalgic soul, so I'm rooted to my own concept of the past. But, in recent years more than ever before, I've realized that Benefit Street, where RISD is located, has become my home. So for me, when I'm at RISD I'm at a place where my mind is very much at home.

For a video interview with Mike Fink, go to www.risd.edu/video_fink.

"People say,

'Are you still teaching?'

and I say,

'Stop using the word still.'"