

## Boating in Broome

Boating is increasingly popular throughout Western Australia and Broome is a favourite destination for recreational skippers. Boating in Broome can be a very enjoyable with local waters renowned for their excellent fishing. The Department for Planning and Infrastructure has produced this guide, in consultation with the Port of Broome and related authorities, to enhance your boating experience in Broome and highlight a number of important safety issues.

Department officers, along with the Department of Fisheries and the Water Police are responsible for enforcing the laws that apply to the operation of recreational vessels in Broome. They regularly check vessels for registration and safety gear and monitor the behaviour of water users.

### Tides

Broome has some of the biggest tides in the world – up to nine metres rise and fall every six hours on spring tides. Make sure you check the tide charts before your boating trip. Tide charts can be obtained from newsgagents and boating and fishing tackle outlets.

### Recreational Skipper's Ticket (RST)

**To operate a vessel less than 4.5 kwp**  
A person in charge of a recreational vessel with a motor of 4.5 kilowatts (6hp) or less is not required to hold an RST.

### Under 10 years

– may not drive a motor boat.

### To operate a vessel greater than 4.5 kwp

A person in charge of a recreational vessel with a motor greater than 4.5 kilowatts (6hp) is required to hold a RST. However, the following age restriction applies:  
**14 – 16 years** – restricted to operating during daylight hours at a speed less than 8 knots.



### Water skiing

Water skiing is restricted to areas gazetted and permitted between the hours of sunrise and sunset unless otherwise indicated.  
It takes three people to water ski, a driver, an observer and a skier.  
**Driver** – must be at least 17 years of age and hold an RST.  
**Observer** – must be at least 14 years of age.  
Vessels taking off with skiers shall give way to vessels landing skiers and appropriate hand signals should be used to communicate between skier and vessel.

### Registration

Registration numbers for powerboats must be 150mm high and displayed on both sides of the vessel mid-ships and clearly visible to other craft.  
Yachts and tenders need 50mm high numbers, situated both sides immediately forward of the transom.  
Registration stickers need to be positioned adjacent to registration numbers on the port side (left).

### Marine radio: VMRS

Broome's Volunteer Marine Rescue Service (VMRS) provides a free marine radio monitoring service in Broome. Please remember to log on and to log off.  
Provide your vessel's:  
• name;  
• registration number or call sign;  
• departure point;  
• destination;  
• trip intentions;  
• number of people on board;  
• fuel carried; and  
• estimated time for return.

This is vital information in case of an emergency.  
Contact **Broome Sea Rescue** on channel 16 VHF or 27.88 MHz.

### Marine wildlife

The waters around Broome contain a huge variety of sea creatures and care should be taken when approaching any wildlife.  
Protected marine species including marine turtles, dugong and the various species of dolphins that inhabit Roebuck Bay are present throughout the year. Try to avoid the shallow meadows where many of these species feed. These meadows are present from the Town Beach boat ramp through to the mudflat areas and are easily disturbed. Aim to avoid flocks of shorebirds and migratory waders inhabit mangrove and Shorbirds. Please consider these feeding and roosting grounds when traversing through the area.  
Humpback whales migrate past Broome between June and October each year on their southern migration. Boat owners must adhere to approach distances and speeds. Whale Watching Guidelines are available through the Department of Environment and Conservation.  
Some boating activities including high speeds and rapid maneuvers may disturb wildlife. Please consider the consequences of your activities on the local environment. Notify the Department of Environment and Conservation, Broome of any injured wildlife or saltwater crocodile sightings.

### Marine stingers

Marine stingers are present on the beaches throughout the year, however the high risk period is from November to June. To treat a sting liberally douse the affected area with vinegar and seek medical attention if required.

### Aquaculture leases

Aquaculture leases exist throughout the Kimberley region. The areas can contain floating or fixed structures and are marked by buoys and beacons which may be lit and should be avoided.

### Boat launching ramps

Town Beach – Robinson Street Broome  
Entrance Point - 2 Ramps - Broome Port  
Gantheume Beach – beach launching  
Willie Creek – beach launching

## Contact information

### Department for Planning and Infrastructure

Kimberley Regional Office Broome \_\_\_\_\_ 9192 0200  
RST hotline \_\_\_\_\_ 9216 8559  
Email \_\_\_\_\_ marine.safety@dpi.wa.gov.au  
Website \_\_\_\_\_ www.dpi.wa.gov.au/imarine

### Volunteer Marine Rescue Services (VMRS)

Broome VMRS \_\_\_\_\_ 9192 8202;  
VHF Channel 16; or  
27 MHz Channel 88  
Derby VMRS \_\_\_\_\_ 0419 959 376

### Police

Broome \_\_\_\_\_ 9194 0200  
Derby \_\_\_\_\_ 9191 1444  
Dampier Peninsula \_\_\_\_\_ 9192 4590  
Water Police \_\_\_\_\_ 9442 8600

### Customs

Broome District Office \_\_\_\_\_ 9193 6999  
Customs Hotline \_\_\_\_\_ 1800 06 1800

### Department of Fisheries

Broome District Office \_\_\_\_\_ 9193 8600  
Fishwatch \_\_\_\_\_ 1800 815 507

### Department of Environment and Conservation

Broome Office \_\_\_\_\_ 9195 5500  
Wildlife Officer \_\_\_\_\_ 0418 957 821

Shire of Broome \_\_\_\_\_ 9191 3456

Shire Ranger \_\_\_\_\_ 0407 382 079

Port of Broome \_\_\_\_\_ 9192 1304



Government of Western Australia  
Department for Planning and Infrastructure

# Broome Boating Guide



December 2008



Government of Western Australia  
Department for Planning and Infrastructure

## Required Safety Equipment

	Protected Waters lakes, rivers, inlets and estuaries except Lake Argyle	0-2 Nautical Miles from the mainland shore	2-5 Nautical Miles from the mainland shore	Over 5 Nautical Miles from the mainland shore
<b>Recreational Skipper's Ticket</b> The skipper of a recreational vessel, powered by a motor greater than 4.5kwp (6 hp) must hold an RST.	✓	✓	✓	✓
<b>Bilge Pump/Bailer</b> All vessels must carry a bilge pump. Vessels under 7 metres may carry a bailer in lieu of a bilge pump.	✓	✓	✓	✓
<b>Fire Extinguisher</b> Vessels with an inboard engine or carrying hydrocarbon consuming appliances must carry an approved fire extinguisher.	✓	✓	✓	✓
<b>Anchor and line</b> An efficient anchor and line must be carried.	—	✓	✓	✓
<b>Lifejacket</b> A lifejacket bearing the Australian standard AS 1512 or PDF Type 1 must be carried for every person onboard.	—	✓	✓	✓
<b>Red and Orange Flares</b> At least two hand held red flares and two hand held orange flares must be carried. Two parachute flares may be carried in lieu of the two hand held red flares and a smoke canister may be carried in lieu of the smoke flares.	—	✓	✓	✓
<b>EPIRB</b> A 406 MHz EPIRB registered with AMSA bearing the standard AS/NZS 4280.1 must be carried if proceeding more than 2 miles from the mainland shore or more than 400 metres from an island located more than 2 miles from the mainland shore.	—	—	✓	✓
<b>Parachute Flares</b> A minimum of two parachute flares must be carried if operating more than 5 miles from the mainland shore or more than 1 mile from an island located more than 5 miles from the mainland shore.	—	—	—	✓
<b>Marine Radio</b> A marine radio must be carried if operating more than 5 miles from the mainland shore or more than 1 mile from an island located more than 5 miles from the mainland shore. The radio can be 27 MHz, VHF or HF.	—	—	—	✓

RSE-1108



# Navigable Waters Regulations Broome Water



0 2000m



### Legend

- 8 Knot speed area
- Water ski area
- Water ski / parasail area
- Commercial ski area
- Commercial PWC / surfcat hire area
- Boating prohibited area
- PWC prohibited area

#### 1 BROOME PORT - 8 KNOT SPEED RESTRICTION AREA

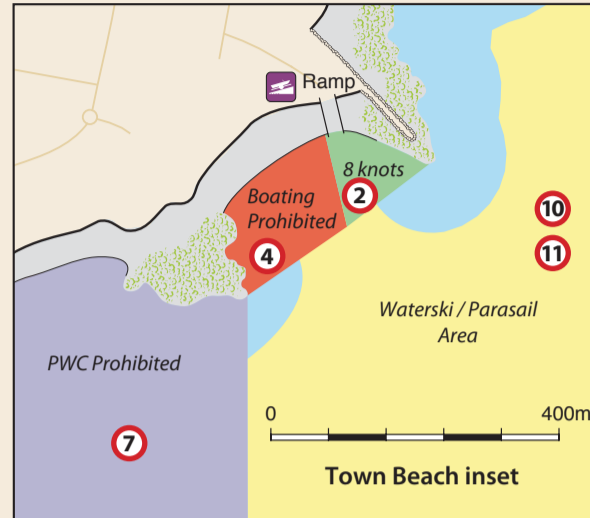
All those waters of the Indian Ocean contained by lines commencing at 18°00.225'S, 122°12.730'E (on the foreshore near the Broome jetty); thence to 17°59.695'S, 122°13.045'E (approximately 1100 metres north-easterly); thence to 17°59.917'S, 122°13.453'E (approximately 830 metres south-easterly); thence to 18°00.447'S, 122°13.139'E (approximately 1100 metres south-westerly); thence north-westerly to the point of commencement. All coordinates based on GDA94.

#### 2 BROOME TOWN BEACH - 8 KNOT SPEED RESTRICTION AREA

All those waters of Roebuck Bay contained by lines commencing at 17°58.250'S, 122°14.202'E (on the foreshore approximately 10 metres west of the boat ramp); thence to 17°58.339'S, 122°14.225'E (approximately 170 metres south-easterly in a line parallel with the boat ramp); thence to 17°58.292'S, 122°14.290'E (at Mangrove Point approximately 145 metres north-easterly). All coordinates based on GDA94.

#### 3 GANTHEAUME BAY - 8 KNOT SPEED RESTRICTION AREA

All those waters of the Indian Ocean contained by lines commencing at 17°58.388'S, 122°11.152'E (on the foreshore east of Red Point); thence to 17°58.150'S, 122°11.152'E (north approximately 400 metres offshore); thence to 17°57.930'S, 122°11.450'E (approximately 670 metres north-easterly); thence to 17°57.600'S, 122°11.670'E (approximately 720 metres north-easterly); thence south-easterly to the foreshore at 17°57.750'S, 122°11.950'E. All coordinates based on GDA94.



#### 13 DAMPIER CREEK - WATERSKI AREA - Broome Water Ski Club only

All of the waters of the eastern branch of Dampier Creek generally south from a line between points 17° 56.2719'S 122° 15.2026'E and 17° 56.2876'S 122° 15.2187'E to a line between points 17° 56.7163'S 122° 15.1477'E and 17° 56.7499'S 122° 15.2344'E and generally west of a line between points E 17° 56.7107'S 122° 15.2743'E and F 17° 56.6780'S 122° 15.2857'E. Not including any offshoots from this branch. This area has been set aside for use by the Western Australian Water Ski Association (Inc) and is under the control of the Broome Water Ski Club. Direction of ski is anti clockwise. Water skiing is prohibited in Dampier Creek when the tide height is less than 6.5 metres as indicated on tide poles situated the western shore of the water ski area. All coordinates based on the GDA94 datum.

#### 12 Commercial Parasail Area

## Gantheume Bay

#### 4 BROOME TOWN BEACH - BOATING PROHIBITED AREA

All those waters of Roebuck Bay contained by lines commencing at 17°58.250'S, 122°14.202'E (on the foreshore approximately 10 metres west of the boat ramp); thence to 17°58.339'S, 122°14.225'E (approximately 170 metres south-easterly in a line parallel with the boat ramp); thence to 17°58.394'S, 122°14.150'E (approximately 160 metres south-westerly). All coordinates based on GDA94.

#### 5 CABLE BEACH - BOATING PROHIBITED AREA

All those waters of the Indian Ocean contained by lines commencing at 17°56.244'S, 122°12.562'E (on the foreshore at Cable Beach); thence to 17°56.244'S, 122°12.235'E (west approximately 400 metres offshore); thence to 17°55.718'S, 122°12.284'E (approximately 970 metres northerly); thence east to 17°55.718'S, 122°12.604'E (on the shore). All coordinates based on GDA94.

#### 6 GANTHEAUME BAY - CLOSED WATERS (PWC)

All those waters of the Indian Ocean contained by lines commencing at 17°58.408'S, 122°10.578'E (on the foreshore near Gantheume Point); thence to 17°56.651'S, 122°10.578'E (approximately 3.2 kilometres north); thence to 17°56.651'S, 122°12.471'E (on the foreshore at Cable Beach approximately 3.3 kilometres west). All coordinates based on GDA94.

#### 7 ROEBUCK BAY - CLOSED WATERS (PWC)

All those waters of Roebuck Bay contained by lines commencing at 17°58.394'S, 122°14.150'E (on the foreshore approximately 300 metres south-west of Mangrove Point); thence to 18°01.018'S, 122°14.150'E (approximately 4.8 kilometres south); thence to 18°01.018'S, 122°12.583'E (approximately 2.8 kilometres west); thence to 18°00.447'S, 122°12.583'E (on the foreshore near Entrance Point approximately 1 kilometre north). All coordinates based on GDA94.

#### 8 CABLE BEACH - COMMERCIAL PERSONAL WATERCRAFT - FREESTYLE DRIVING AREA

All those waters of the Indian Ocean contained by lines commencing at 17°56.651'S, 122°12.471'E (on the foreshore on Cable Beach); thence to 17°56.651'S, 122°11.490'E (approximately 1.5 kilometres west); thence to 17°56.244'S, 122°11.490'E (approximately 750 metres north); thence easterly to the foreshore at 17°56.244'S, 122°12.562'E; PROVIDING that the area is set aside for the exclusive use of one commercial operator of personal watercraft and surfcats and also providing that the area may be used by personal watercraft only between the hours of sunrise and sunset. All coordinates based on GDA94.

#### 9 GANTHEAUME BAY - WATER SKI AREA

All those waters of the Indian Ocean contained by lines commencing at 17°57.750'S, 122°11.950'E (on the foreshore approximately 1.8 kilometres north-east of Red Point); thence to 17°57.600'S, 122°11.670'E (north-westerly approximately 400 metres offshore); thence to 17°56.651'S, 122°12.130'E (approximately 1.9 kilometres north-easterly); thence east to the foreshore at 17°56.651'S, 122°12.471'E; PROVIDING that skiing is not permitted within 45 metres of any moored vessel. All coordinates based on GDA94.

#### 10 ROEBUCK BAY - WATERSKI AREA

All those waters of Roebuck Bay contained by lines commencing at 17°57.669'S, 122°15.821'E; thence to 17°58.810'S, 122°15.821'E (south approximately 2 kilometres offshore); thence to 17°58.810'S, 122°14.150'E (west approximately 3 kilometres); thence north to 17°58.394'S, 122°14.150'E (on the foreshore); and a line across the entrance to Dampier Creek from 17°57.470'S, 122°14.759'E to 17°57.470'S, 122°15.260'E; excluding all gazetted boating prohibited areas and 8 knot speed restriction areas, PROVIDED that no skiing is permitted within 100 metres of the foreshore. This water ski area shall be a deep water take-off area only. All coordinates based on GDA94.

#### 11 ROEBUCK BAY - PARASAILING AREA

All those waters of Roebuck Bay contained by lines commencing at 17°57.669'S, 122°15.821'E; thence to 17°58.810'S, 122°15.821'E (south approximately 2 kilometres offshore); thence to 17°58.810'S, 122°14.150'E (west approximately 3 kilometres); thence north to 17°58.394'S, 122°14.150'E (on the foreshore); and a line across the entrance to Dampier Creek from 17°57.470'S, 122°14.759'E to 17°57.470'S, 122°15.260'E; excluding all gazetted boating prohibited areas and 8 knot speed restriction areas, PROVIDED HOWEVER that:

1. no parasailing is permitted within 100 metres of the foreshore;
2. parasailing may be conducted between the hours of 0800 and sunset only; and
3. that such activities may not be conducted within 100 metres of any other vessel, person or object in the water.

This parasailing area shall be a deepwater take-off and landing area only. All coordinates based on GDA94.

#### 12 CABLE BEACH - COMMERCIAL PARASAILING AREA

All those waters of the Indian Ocean contained by lines commencing on the foreshore at 17°55.718'S, 122°12.604'E; thence to 17°55.718'S, 122°09.422'E (west approximately 5.6 kilometres offshore); thence to 17°55.304'S, 122°09.422'E (approximately 760 metres north); thence easterly to 17°55.304'S, 122°12.657'E (on the foreshore at Cable Beach); PROVIDING that the area is set aside for the exclusive use of one commercial operator and also providing that the area may be used for parasailing only between the hours of sunrise and sunset. All coordinates based on GDA94.

**Moorings and visiting vessels**  
All moorings in Roebuck Bay and Gantheume Point are under the control of the Port of Broome. Please contact the Port on 9192 1304 or VHF Ch 16 before anchoring or mooring in these areas.

#### RIDDELL POINT

#### ENTRANCE POINT

## Roebuck Bay

#### Water Ski / Parasail Area

#### Water Ski / Parasail Area

#### Water Ski / PWC Prohibited

see inset

#### Broome Water Ski Club only

#### Broome Water Ski Club only