

765

CVE 90

HNSA thanks Ed Zajkowski for his generous loan of the original document used to create this online version.

BOOKLET OF GENERAL PLANS AIRCRAFT CARRIER

CVE90

CONTENTS

- 1. TITLE PAGE
- 2. GENERAL INFORMATION
- 3. OUTBOARD PROFILE
- 4. INBOARD PROFILE
- 5. ISLAND STRUCTURE
- 6. FLIGHT DECK
- 7. GALLERY DECK
- 8. UPPER DECK
- 9. HANGAR DECK
- 10. 2ND. DECK
- 11. 1ST. PLATFORM
- 12. TANK TOP
- 13. INNER BOTTOM
- 14. SECTIONS
- 15. FORWARD SECTION
- 16. " "
- 17. AFTER SECTION

CORRECTED TO SUIT SHIP		
PLACE	DATE	CORRECTION APPROVED

PREPARED BY
INDUSTRIAL COMMAND
 U.S. NAVAL REPAIR BASE
 SAN DIEGO, CALIFORNIA

EXAMINED BY *H. D. Romick* COMDR. U.S.N.
 DESIGN SUPT.
 APPROVED BY *R. F. Samuel* CAPT. U.S.N.
 PLANNING OFFICER
 DATE 31 MAY 1945

BUREAU OF SHIPS PLAN NUMBER
CVE 90-SO107-506078

GENERAL INFORMATION

LENGTH BETWEEN PERPENDICULARS	490'-0"
LENGTH OVERALL	512'-3"
BEAM, EXTREME OVER PLATING	65'-0"
BEAM, " " GUN PLATFORM	108'-1 1/4"
DEPTH, MOLDED TO HANGAR DK	36'-0"
DISPLACEMENT, LIGHT LOAD IN TONS	6,854
" " FULL LOAD " "	10,902
" " EMERGENCY LOAD	11,760
DRAFT, LIGHT LOAD	14'-6 1/4"
" " FULL LOAD	20'-7"
" " EMERGENCY LOAD	22'-0"
DRAFT, MEAN ABOVE BOTTOM OF KEEL, DESIGNERS	19'-0 3/4"

HEIGHTS ABOVE BASE LINE

TANK TOP	9'-0"
FIRST PLATFORM	18'-0"
2ND DECK	27'-0"
HANGAR DECK	36'-0"
UPPER DECK	45'-0"
GALLERY DECK	54'-2 1/2"
FLIGHT DECK AT $\frac{1}{2}$	62'-2"
" " SIDES	62'-0"
NAVIGATING BRIDGE	69'-0"
GUNNERY CONTROL	76'-0"
RANGE FINDER PLAT.	78'-6"
12" SEARCHLIGHT PLAT.	83'-6"
24" " " "	90'-6"
SIGNAL YARD ARM LEVEL	97'-6"
S.K. RADAR PLAT.	104'-0"
$\frac{1}{2}$ OF TRUCK LIGHT	125'-0"
$\frac{1}{2}$ OF MASTHEAD LIGHT	125'-0"
$\frac{1}{2}$ OF RANGE LIGHT	104'-0"
$\frac{1}{2}$ OF SIDE LIGHTS	57'-9"
S.G. RADAR PLATE	125'-0"

FRAME SPACING

FRAMES F.P TO 14	24"
" 14 " 32	27"
" 32 " 184	30"
" 184 " 205	24"

PROPELLERS

DIAMETER	12.25'
PITCH	13.71'

MODIFIED M.Q. TYPE C-3 SHIPS

CONDENSERS

2 WESTINGHOUSE CONDENSERS 2 PASS TYPE	
COOLING AREA IN SQ. FT.	4500
3 WESTINGHOUSE AUX. COND.	

MAIN PROPULSION EQUIPT.

2 - 4500 H.P. SKINNER UNIFLOW RECIPROCATING ENGINES

BOILERS

4- FOSTER WHEELER TYPE D
EVAPORATION - 52000 LBS. PER HOUR
HEATING SURFACE PER BOILER - 5600 SQ. FT.

BOATS & LIFE RAFTS

2 - 26 FT. 24 MEN MOTOR WHALE BOATS
30-25 MEN LIFE RAFTS
8 - 25 MEN LIFE NETS
1 - 24 FT. PERSONNEL BOAT

BATTERY

NO.	TYPE
8	TWIN 40 M.M.A.A. MACH. GUNS GUN PLATFORM
20	20 M.M.A.A. MACH. GUNS GUN PLATFORM
1	5" - 38 CAL. GUN HANGAR DECK.

COMPLEMENT

OFFICERS	SHIP	AVIATION	TOTAL	BERTHS
COMMANDING OFFICER	1	0	1	1
WARDROOM OFFICERS	36	0	36	101
WARRANT OFFICERS	8	0	8	0
TOTALS	45	0	45	102
ENLISTED MEN				
C.P.O.	24	0	24	44
CREW	527	0	527	712
TOTALS	551	0	551	756
GRAND TOTAL	596	0	596	858

FOAMITE GENERATORS

NO.	LOCATION	NO.	LOCATION
1-79-1A-105L	HANGAR	02-54-2	GALLERY WALKWAY
1-82-2A-105L	"	02-72-3	" "
1-109-2A-105L	"	02-107-4	" "
1-110-1A-105L	"	02-103-1	" "
1-165-2C-105L	"	02-135-2	" "
1-166-3C-105L	"	02-171-3	" "
02-23-2	GALLERY WALKWAY	02-193-1	" "
02-23-1	"	02-198-2	" "

BUILT IN

DUPLEX PROP.

FOAMITE GENERATORS

NO.	LOCATION	NO.	LOCATION
4-98-1B-1	FWD ENGINE RM	2-98-2B-201-2T	PASSAGEWAY
4-97-2B1	" " "	2-106-1B-202-L	" "
4-129-1B2	AFTER ENGINE RM.	4-104-1	" "
4-133-2B2	" " "	2-130-2B-203-L	FWD CREWS MESS

DUPLEX PROP.

NO.	LOCATION
1-82-2	HGR. DECK
1-130-2	" "
1-147-2	" "
1-94-1	" "

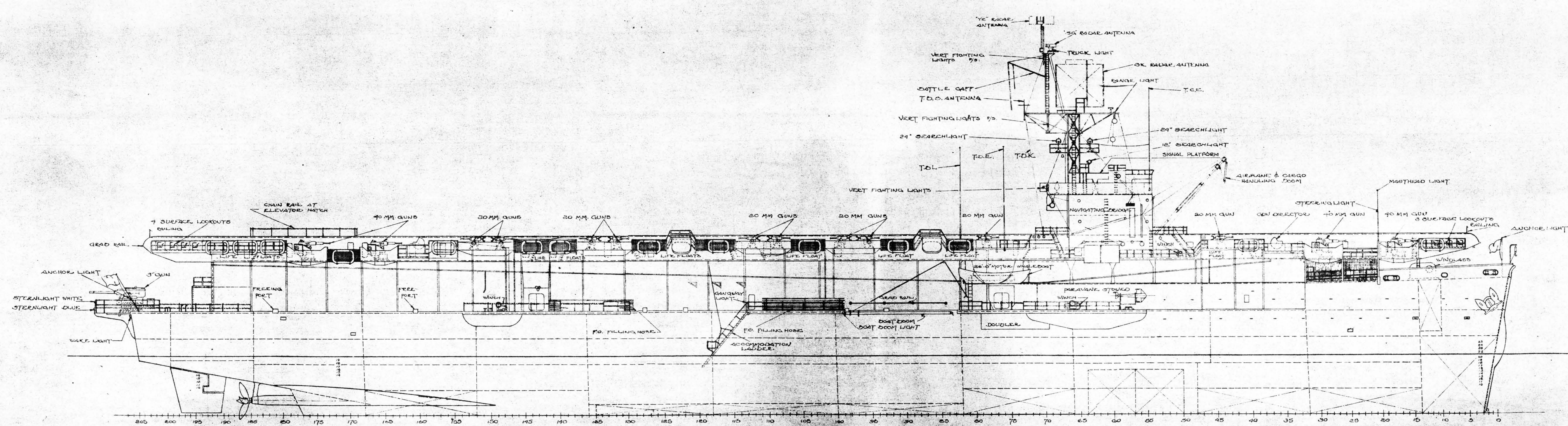
FIRE PLUGS

F.P. NO.	LOCATION	F.P. NO.	LOCATION
4-97-3	BI FWD. ENGINE ROOM	2-186-2	C-204T PASSAGEWAY
4-97-2	B1 " " "	1-20-2	A-102T " "
4-108-2	B-407-E MACHINE SHOP	1-40-CL	A-103-L C.P.O. BERTHING
4-111-1	PASSAGEWAY	1-78-1	A-105-L HANGAR
4-129-1	AFTER ENGINE ROOM	1-82-2	" " "
4-133-2	B2 AFT " "	1-110-1	" " "
4-143-2	C-401-2T PASSAGEWAY	1-110-2	" " "
4-144-1	C-401-IT " "	1-165-3	" " "
3-31-1	A-301-L CREWS BERTHING	1-166-1	" " "
3-46-2	A-303-L " " "	1-191-1	FANTAIL
3-73-1	A-305-LWR SR. COUNTRY	1-191-2	" "
3-73-2	A-305-L " " "	01-20-1	WEATHER DK. FOC'SLE
3-146-2	C-301-6A REFRIG. FLAT	01-53-1	WR.S.R. COUNTRY
3-156-2	C-302A AVIATION STORES	01-53-1	" "
3-168-3	C-303-L CREWS BERTHING	01-65-2	LOBBY
3-185-2	C-304-E STEERING FLAT	02-24-1	GALLERY WALKWAY
2-25-2	A-202-L CREWS HEAD	02-23-2	" "
2-43-2	A-203-L " BERTHING	02-39-1	PASSAGEWAY INBD. CAPT. CABIN
2-72-2	A-205-2T PASSAGEWAY	02-54-1	STBD. PASSAGEWAY
2-73-1	A-205-IT " "	02-54-2	GALLERY WALKWAY
2-98-2	B-201-2T " "	02-52-2	PORT PASSAGEWAY
2-106-1	B-202-L " "	02-72-1	GALLERY WALKWAY
2-121-1	B-203-L FWD CREWS MESS	02-107-2	" "
2-130-2	B-203-L " " "	02-109-1	" "
2-141-2	C-201-L CREWS GALLEY PASS	02-135-2	" "
2-165-3	C-202-L AFT CREWS MESS	02-171-1	" "
2-167-6	C-202-L " " "	02-199-1	" "
2-186-4	C-204-T PASSAGEWAY	02-198-2	" "

TOTAL NO. OF PLUGS - 56

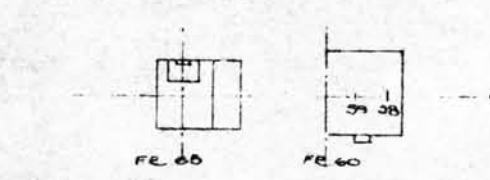
CVE90 GENERAL INFORMATION

BUREAU OF SHIPS PLAN NO. CVE90-S0107-506078

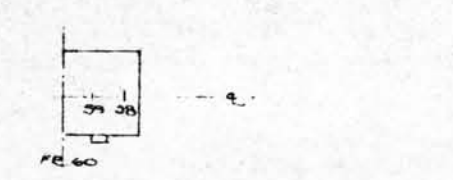


FLIGHT DECK
 GALLERY DECK
 UPPER DECK
 HANGAR DECK
 SECOND DECK
 FIRST PLATFORM
 TANK TOP
 BASE LINE

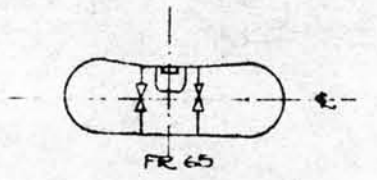
CVE90
OUTBOARD PROFILE
 SCALE: 1/16"=1'-0"



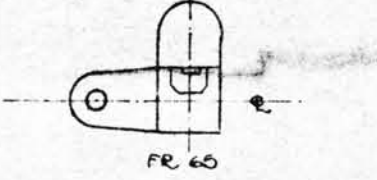
12" SEARCHLIGHT PLATFORM
83'-6" ABOVE D.L.



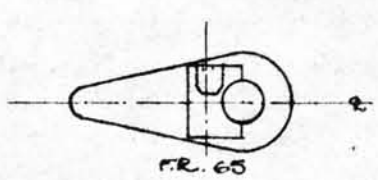
RANGE FINDER PLATFORM
88'-6" ABOVE D.L.



39" SEARCHLIGHT LEVEL
90'-6" ABOVE D.L.



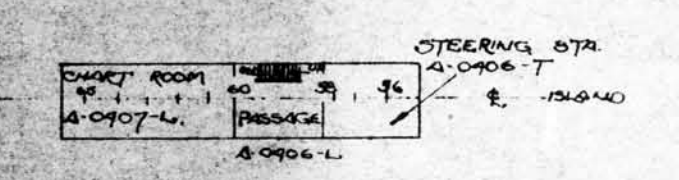
SIGNAL YARDARM LEVEL
97'-6" ABOVE D.L.



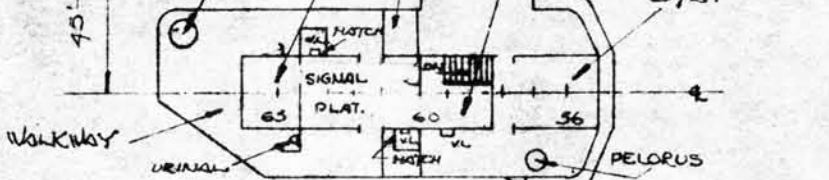
5K RADAR LEVEL
109'-0" ABOVE D.L.



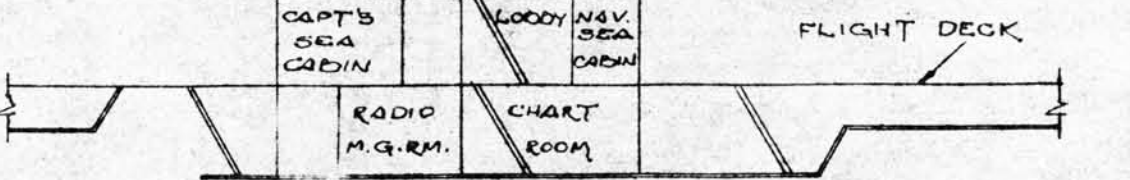
5G RADAR LEVEL
125'-0" ABOVE D.L.



NAVIGATING BRIDGE
69'-0" ABOVE D.L.



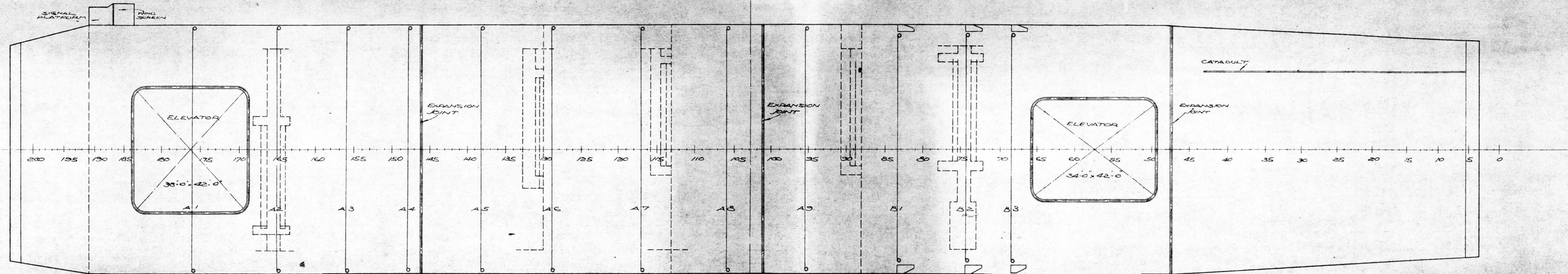
GUNNER'S CONTROL
76'-0" ABOVE D.L.



INDOARD PROFILE ISLAND STRUCTURE

**CVE90
ISLAND STRUCTURE**
SCALE: 1/16" = 1'-0"

BUREAU OF SHIPS PLAN NO. CVE90-SO107-506078

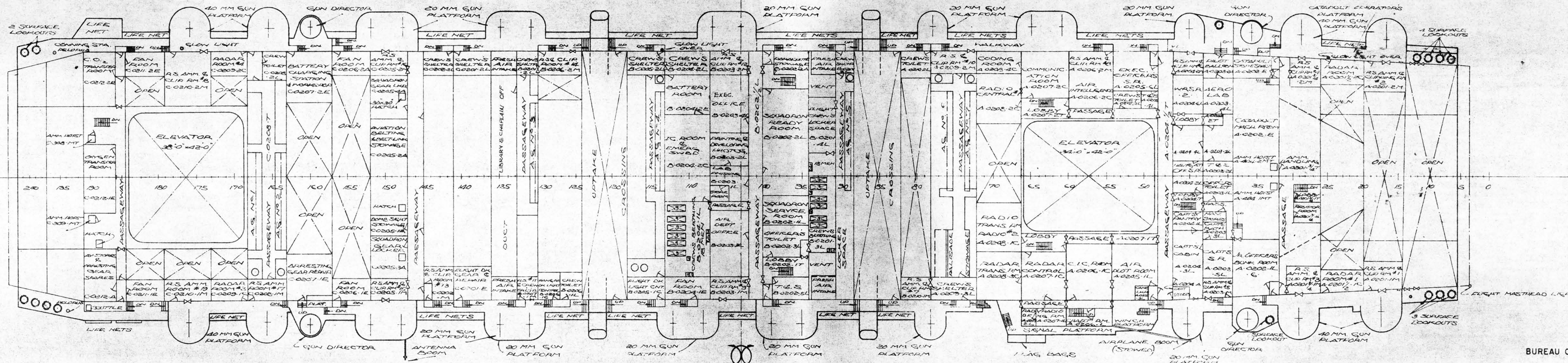


**CVE90
FLIGHT DECK**

SCALE: 1/16" = 1'-0"

BUREAU OF SHIPS PLAN NO. CVE90-SO107-506078

SHEET NO. 6 OF 17

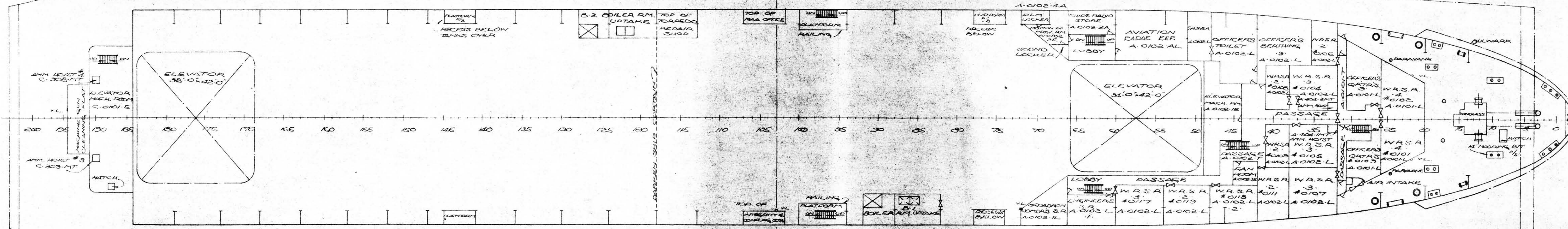


**CVE 90
GALLERY DECK**

SCALE: 1/16" = 1'-0"

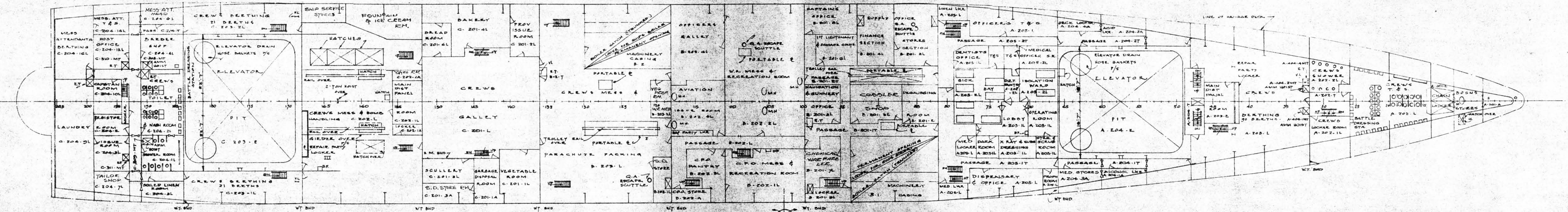
BUREAU OF SHIPS PLAN NO. CVE90-SO107-506078

SHEET NO. 7 OF 17

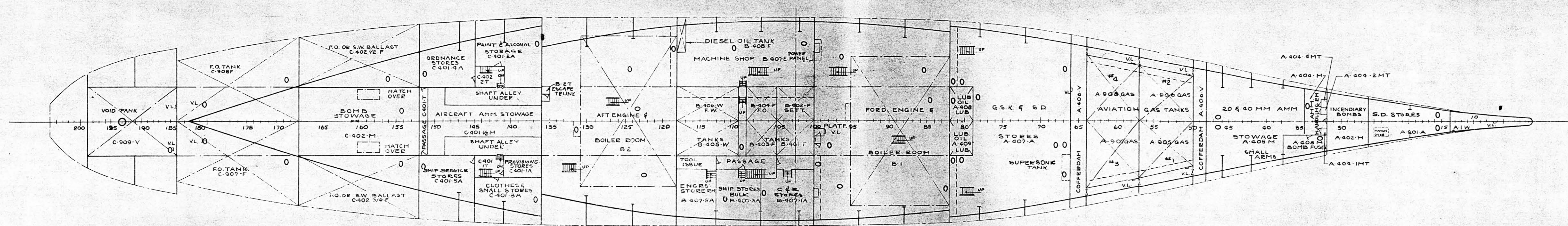


**CVE90
UPPER DECK**
SCALE: 1/16" = 1'-0"

BUREAU OF SHIPS PLAN NO. CVE90-S0107-506078

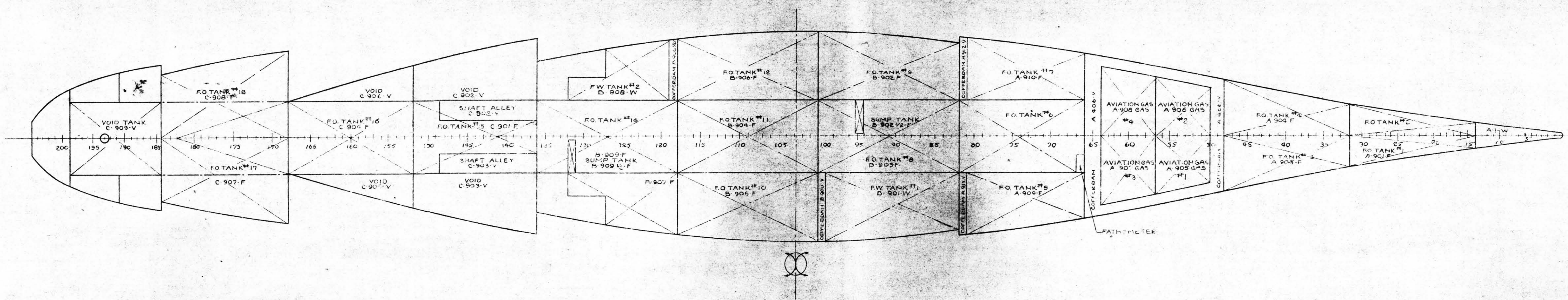


CVE90
SECOND DECK
 SCALE: 1/16" = 1'-0"



**GVE90
TANK TOP**

SCALE: 1/16" = 1'-0"

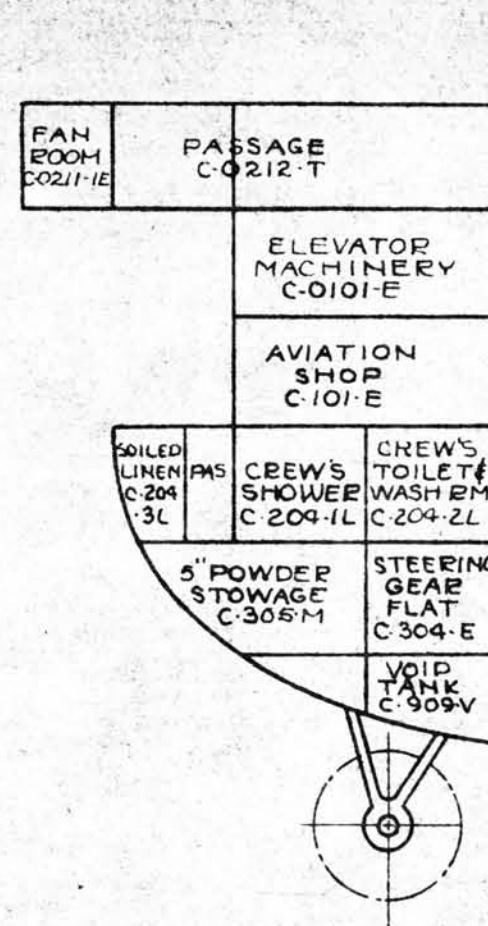


**CVE90
INNER BOTTOM**

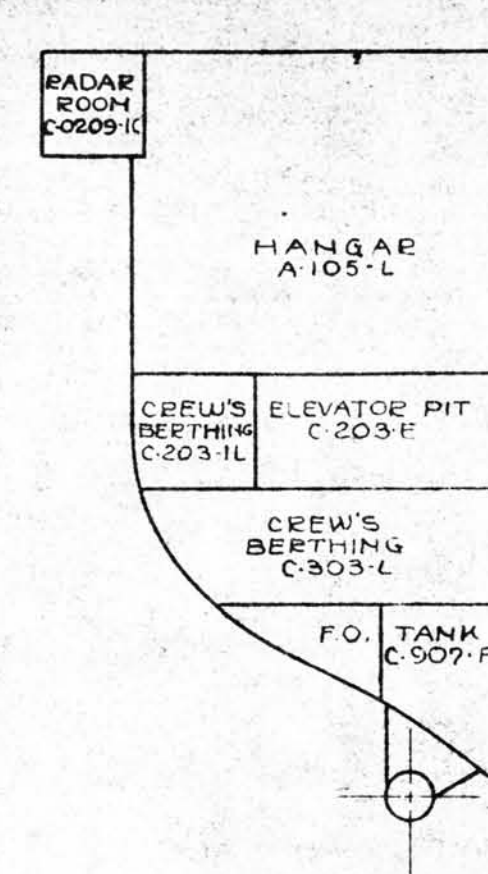
SCALE: 1/16" = 1'-0"

BUREAU OF SHIPS PLAN NO. CVE90-SO107-506078

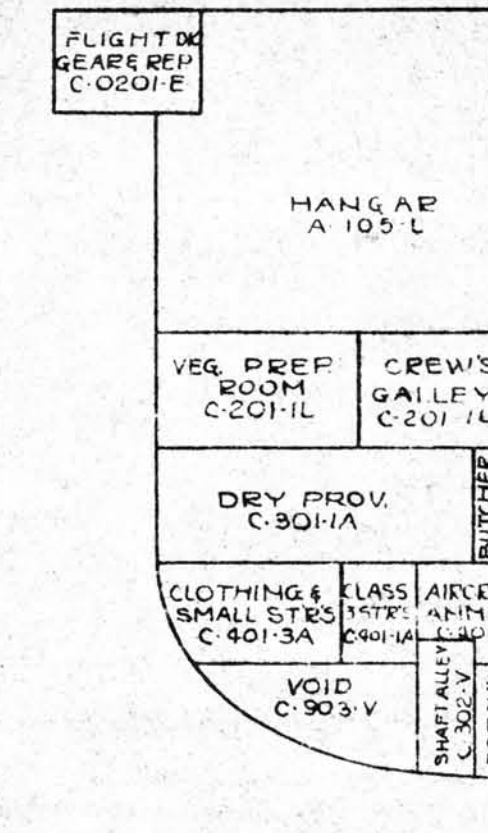
SHEET NO. 13 OF 17



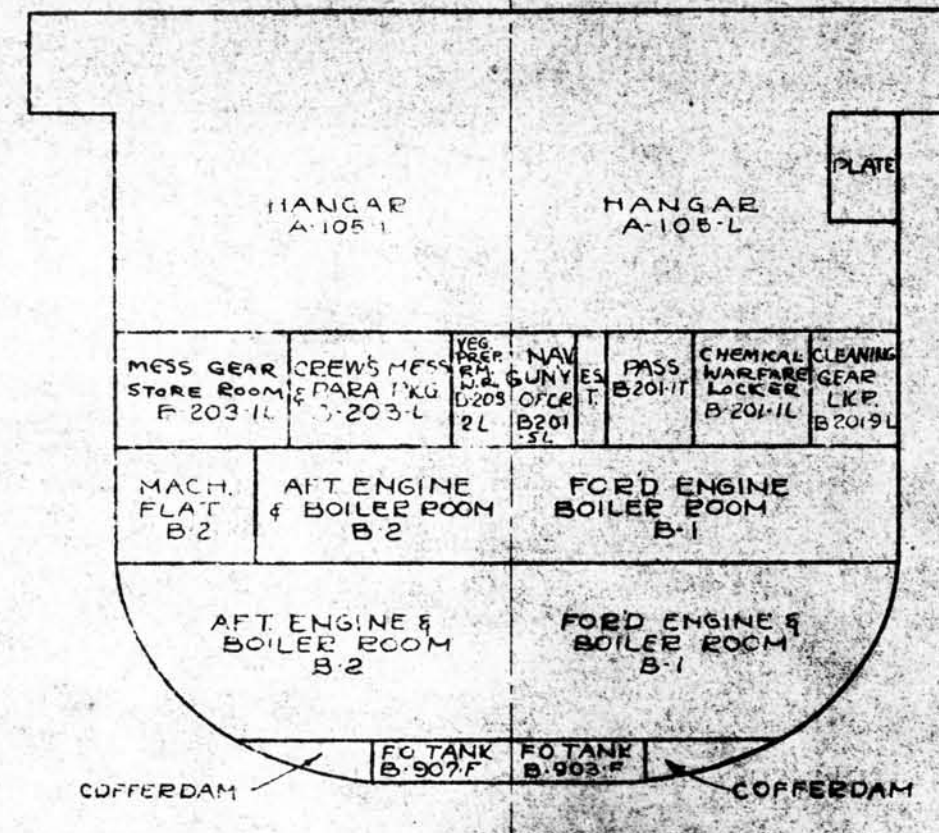
FRAME 184
LOOKING AFT



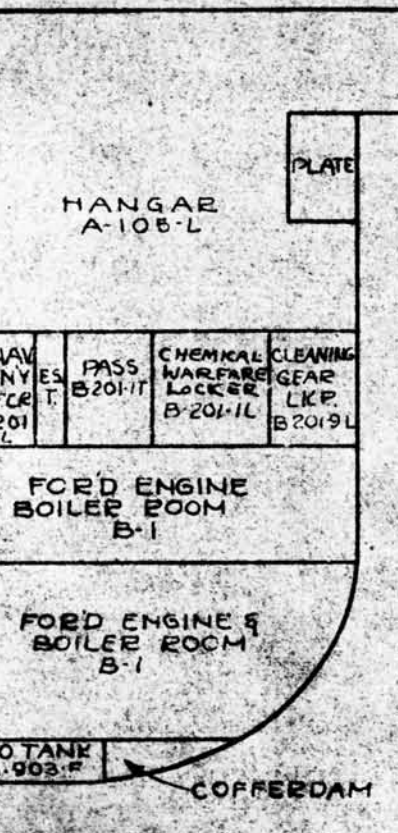
FRAME 168
LOOKING AFT



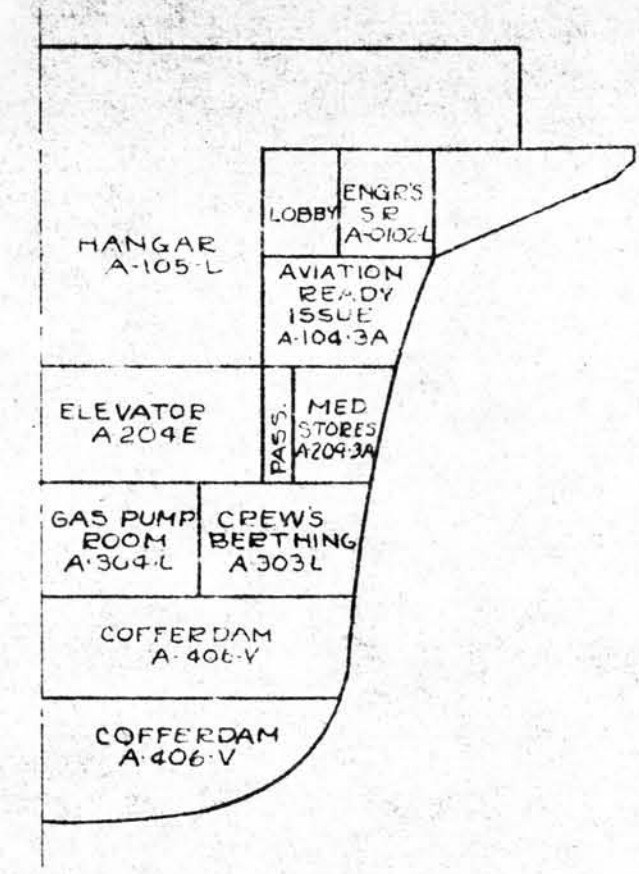
FRAME 136
LOOKING AFT



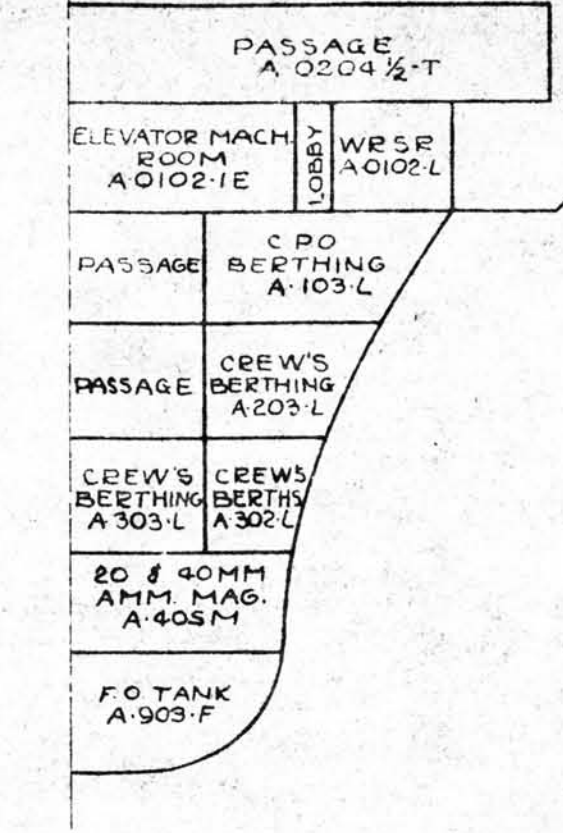
FRAME 118
LOOKING AFT



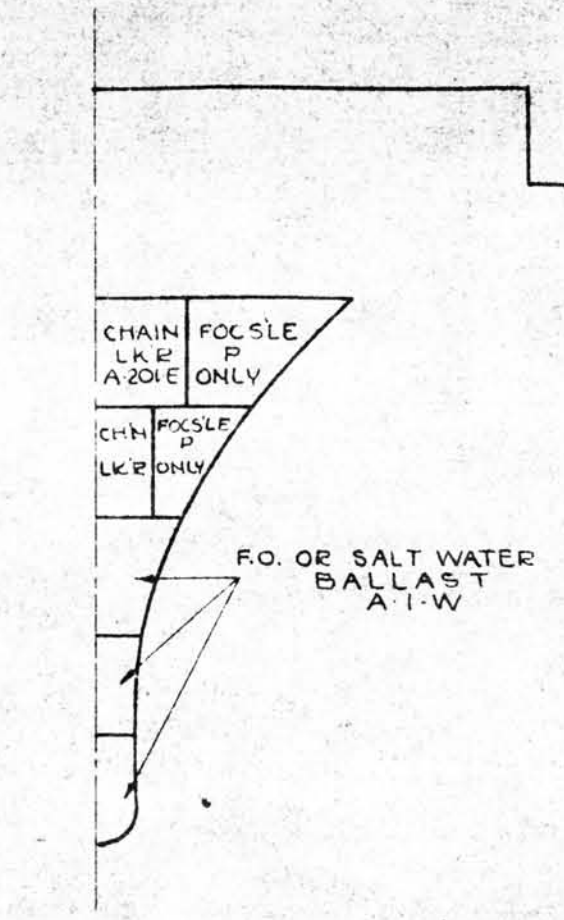
FRAME 100
LOOKING FOR'D



FRAME 66
LOOKING FOR'D



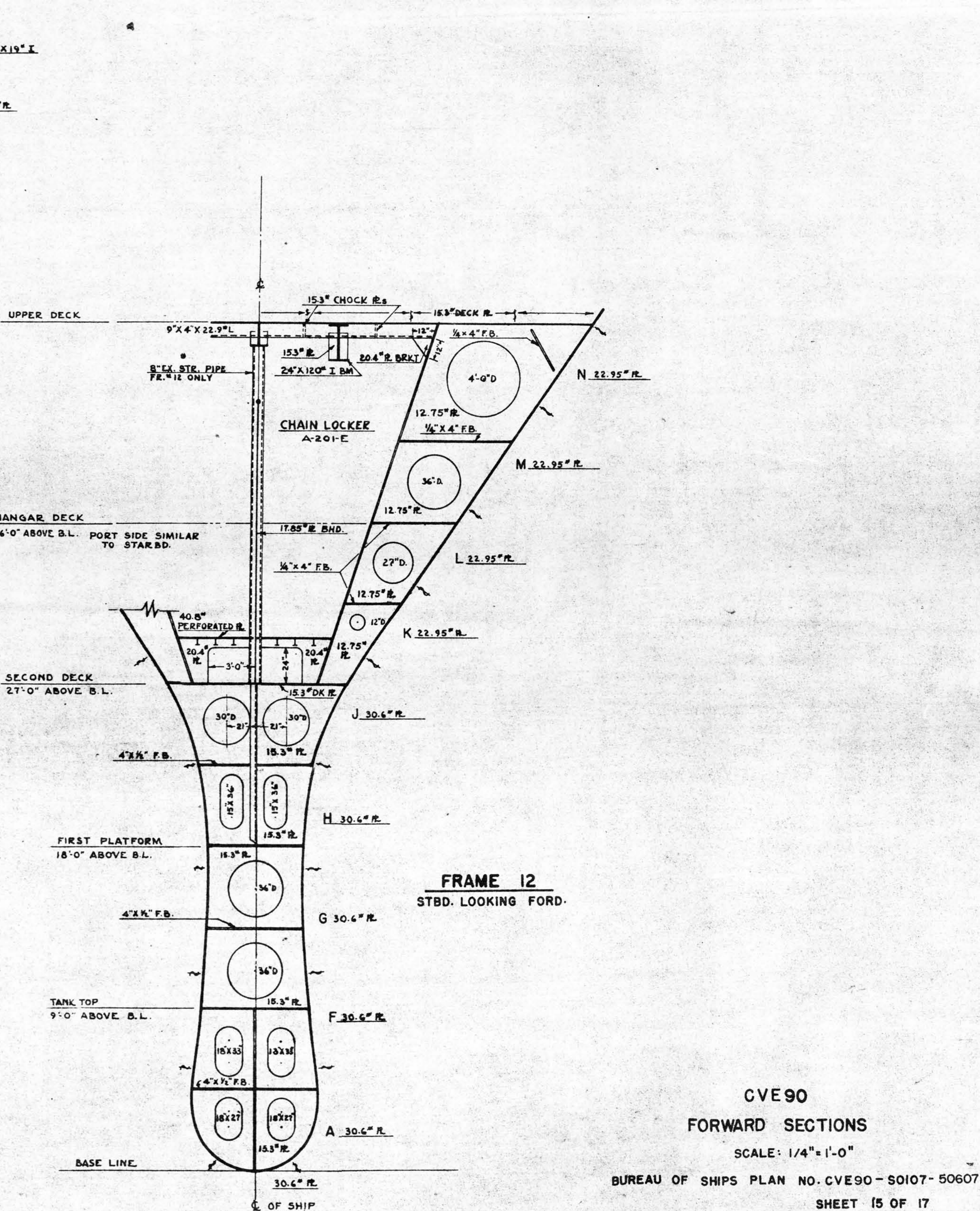
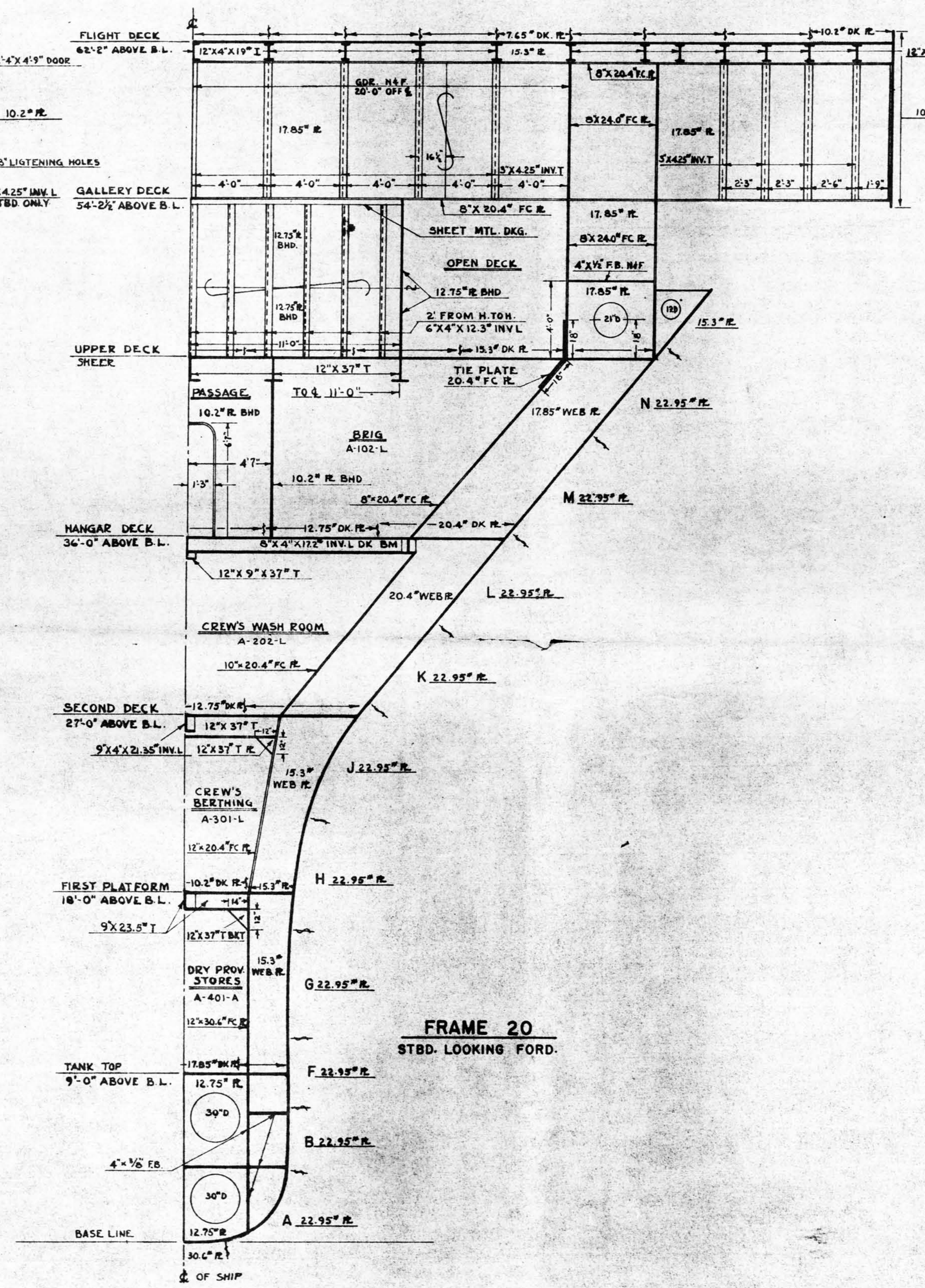
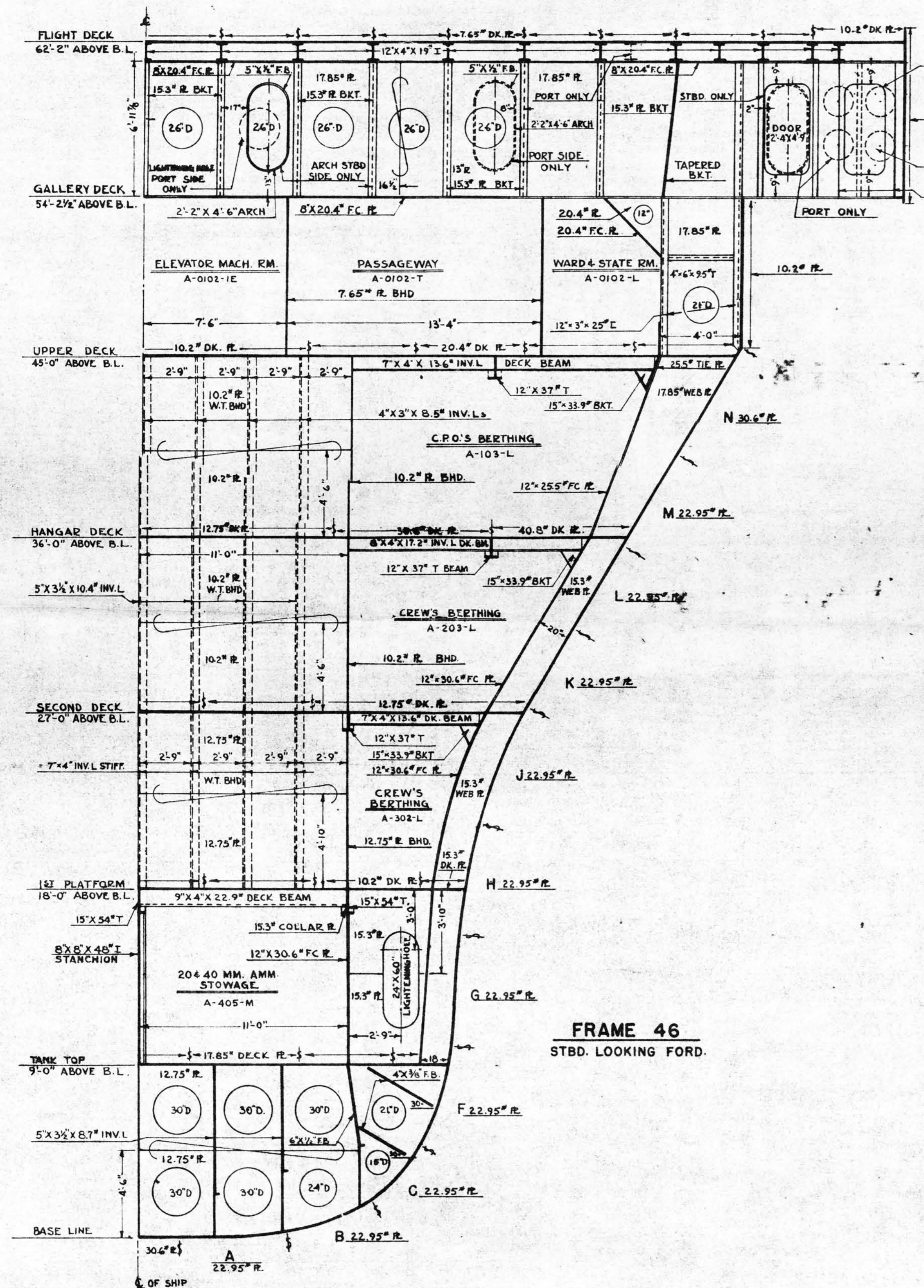
FRAME 48
LOOKING FOR'D

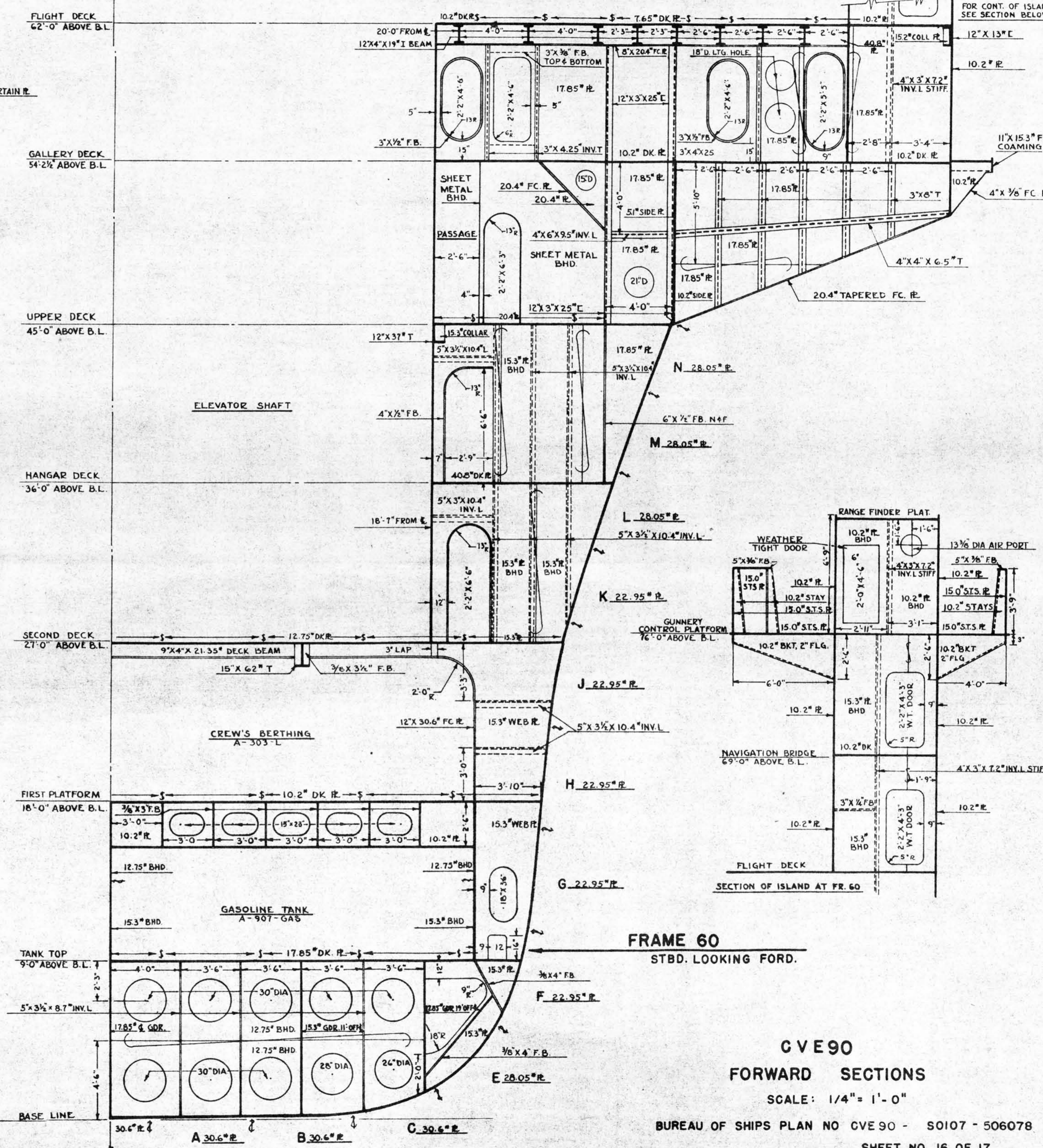
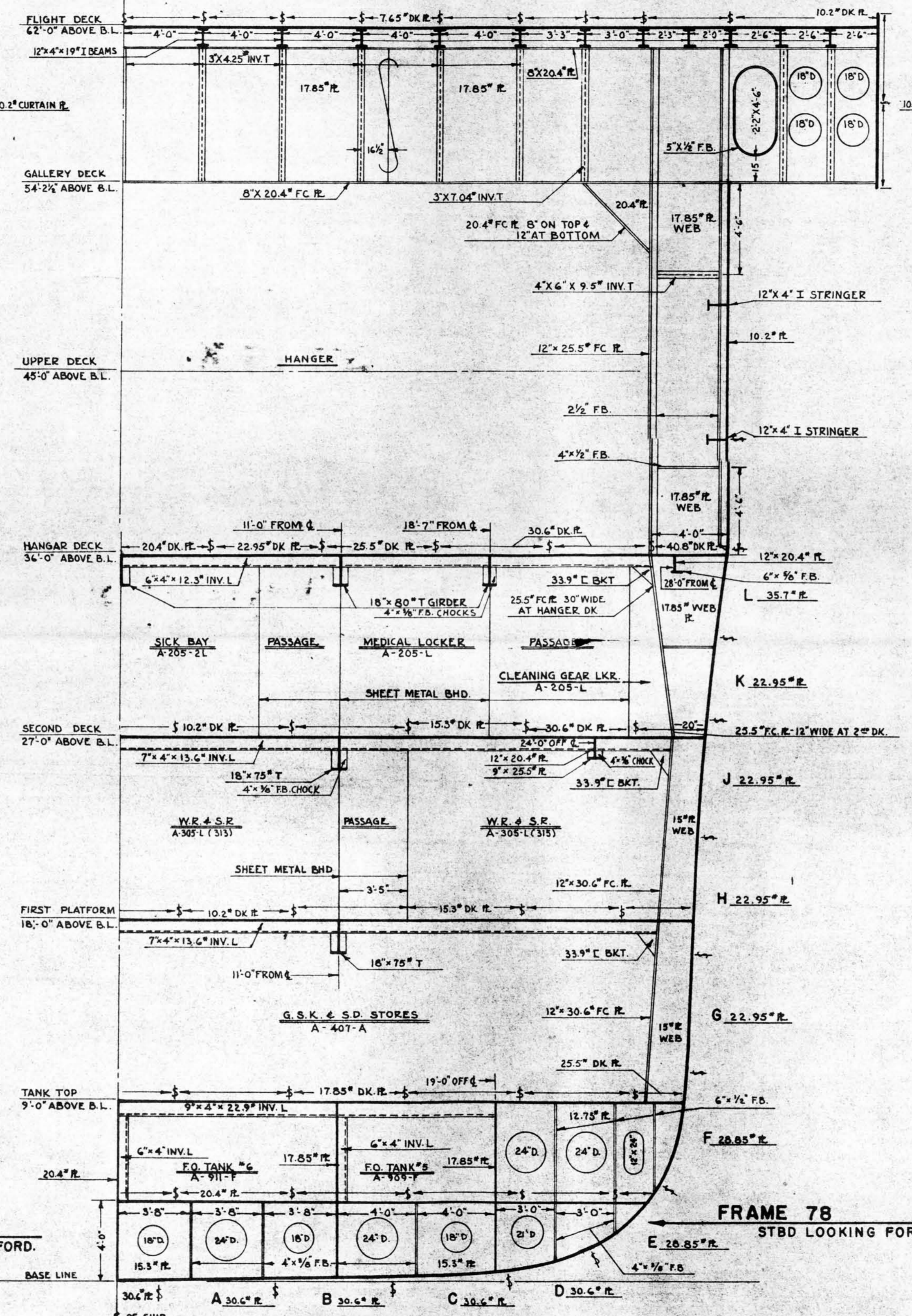
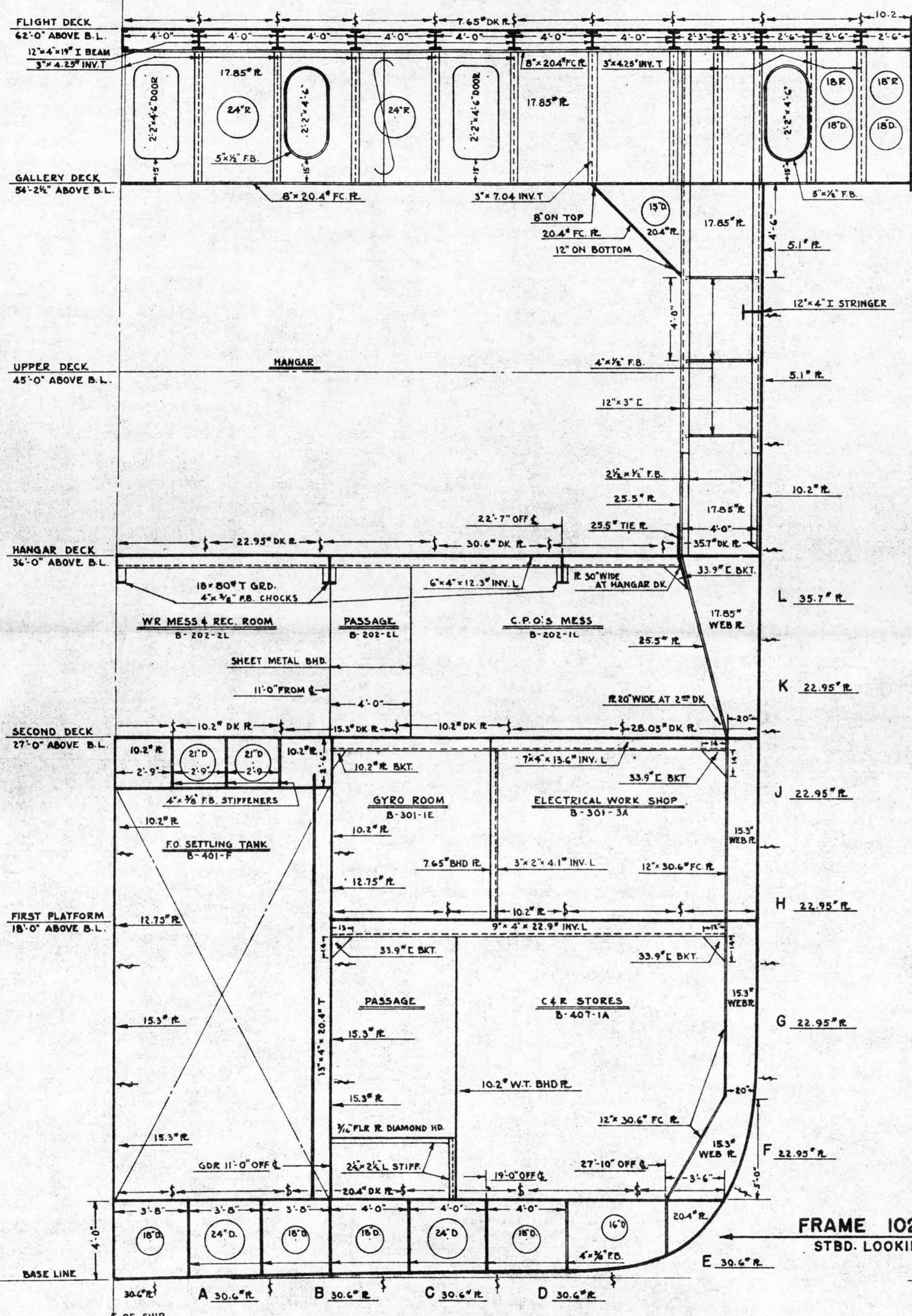


FRAME 14
LOOKING FOR'D

**CVE90
SECTIONS**

SCALE: 1/16" = 1'-0"





CVE 90
FORWARD SECTIONS
 SCALE: 1/4" = 1'-0"

