

LOFAR Technical Status: Introduction and Timelines

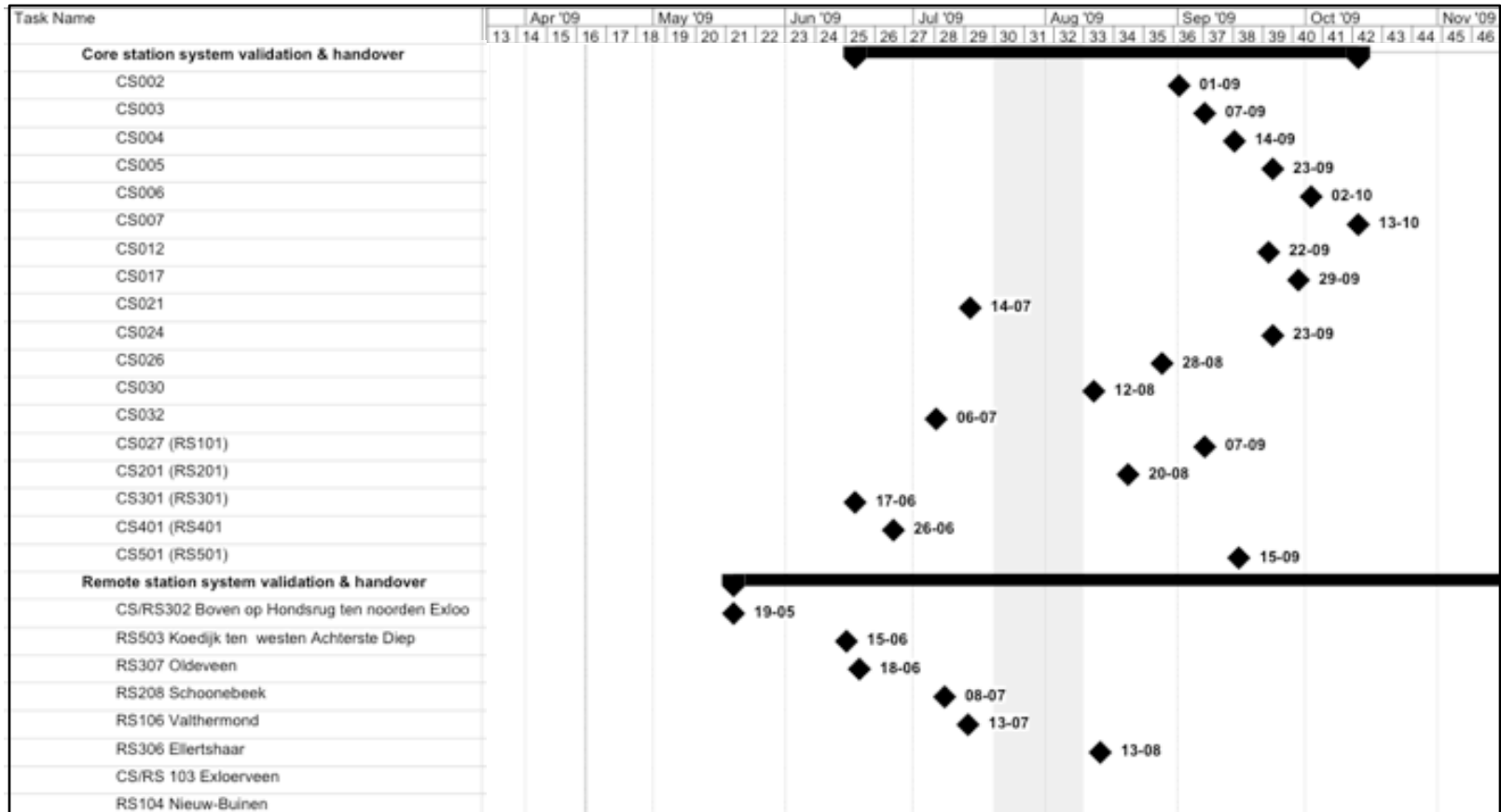
LOFAR Technical Status Meeting

18 May 2009

Michael Wise

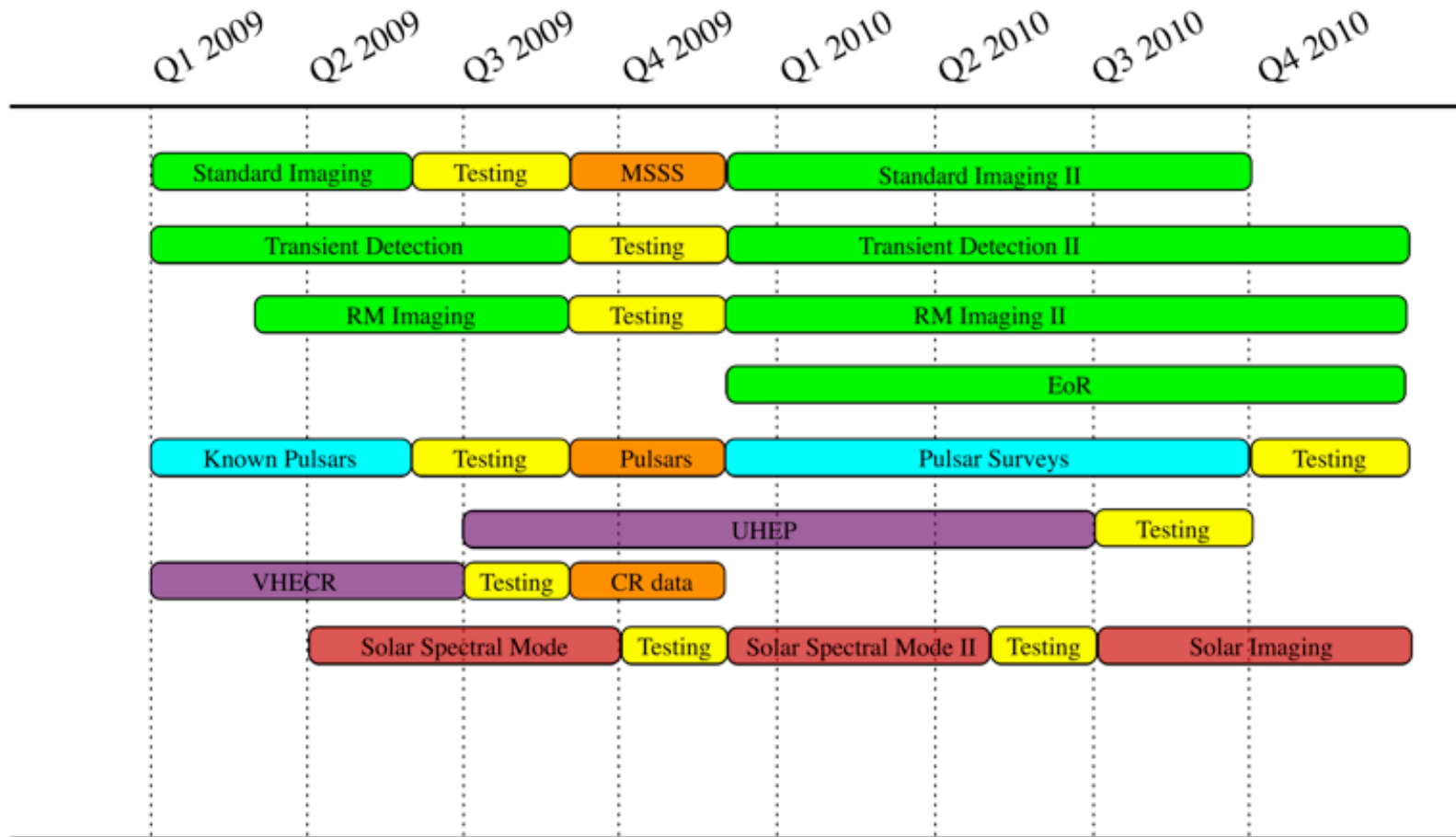
	Monday, May 18	Tuesday, May 19
9:00 AM	Welcome (Vermeulen)	
9:30 AM	Introduction and Timelines (Wise)	Proposal Support (Polatidis)
10:00 AM	Roll-out Status (Vogt)	Commissioning Plans (Wise)
10:30 AM	Hardware Status (Gunst)	MSSS Specifications (de Bruyn)
11:00 AM	Coffee	Coffee
11:30 AM	Bands, Beams, and Bits (Brentjens)	Long-baseline Issues (Conway)
12:00 PM	CEP Performance (Broekema)	Surveys
12:30 PM	Archive Status (Holtjes)	Magnetism
1:00 PM		EoR
1:30 PM	Lunch	Transients
2:00 PM	Calibration Status (de Bruyn)	Pulsars
2:30 PM	Imaging Sensitivities (Nijboer)	Cosmic Rays
3:00 PM	LOFAR Observing Modes (Wise)	Solar and Space Weather
3:30 PM	Discussion (Beck)	Single Station Modes
4:00 PM	Coffee	Discussion (Jackson)
4:30 PM	Imaging Pipeline (Nijboer)	Wrap-up (Wise)
5:00 PM	Pulsar Pipeline (Hessels)	KSP Working Groups
5:30 PM	VHECR Pipeline (Horneffer)	
6:00 PM	Discussion (Fender)	
6:30 PM	End of Day I	End of Day II
7:00 PM	Borrel	
7:30 PM		
8:00 PM		

- Prepare for call for proposals
- Assess planned technical capabilities
- Synchronize activities roll-out
- Review current commissioning plans
- Inventory KSP commissioning projects
- Allocate available commissioners



*Milestones ⇒ LOFAR 3 (mid-June)
 LOFAR 10 (mid-Aug.)
 LOFAR 20 (late-Sept.)*

*0.5 CEP (mid-June)
 Superstation (mid-Oct.)*



Milestones ⇒ Standard imaging (June 09)
Known pulsars (July 09)
VHECR (Aug. 09)

Present - Aug 09

Station and Pipeline Integration

Operations I

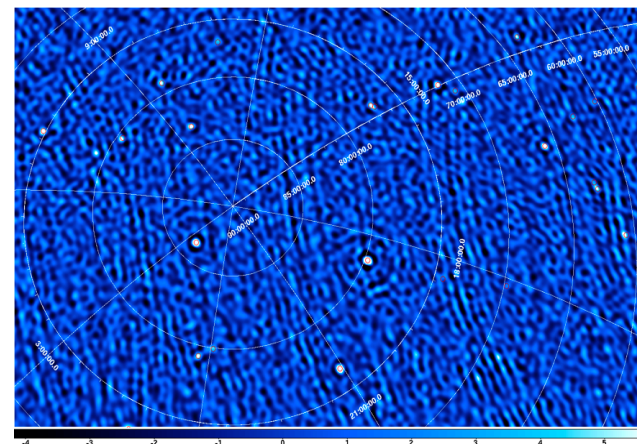
- Basic data-taking
- Manual pipeline execution
- No parallel observations
- Station test procedures

Station Integration I

- LOFAR01
- LOFAR03
- LOFAR05
- LOFAR10
- LOFAR10+INTBL04

Pipeline Integration I

- Standard Imaging
- Known Pulsars
- VHECR mode



Sept 09 - Dec 09

Pipeline Testing and Validation

Operations II

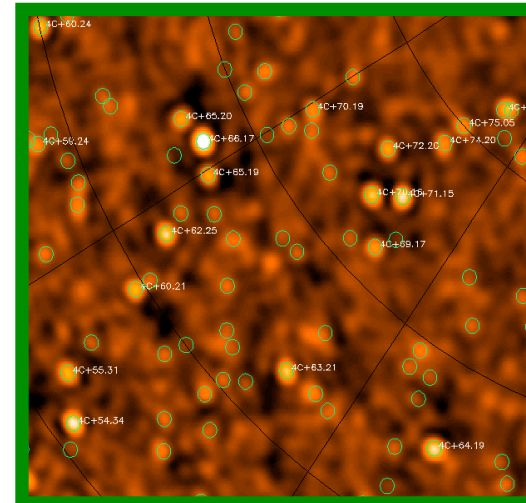
- Routine data-taking
- Automatic pipeline execution
- Limited parallel observations
- Initial archive integration

Station Integration II

- LOFAR15
- LOFAR20
- LOFAR20+INTBL06
- Core Superstation

Pipeline Validation I

- MSSS
- Timing survey
- Offline transient searches
- Latency tests
- RM experiments



Jan 10 - Jun 10

Full Array Testing and Early Science

Operations III

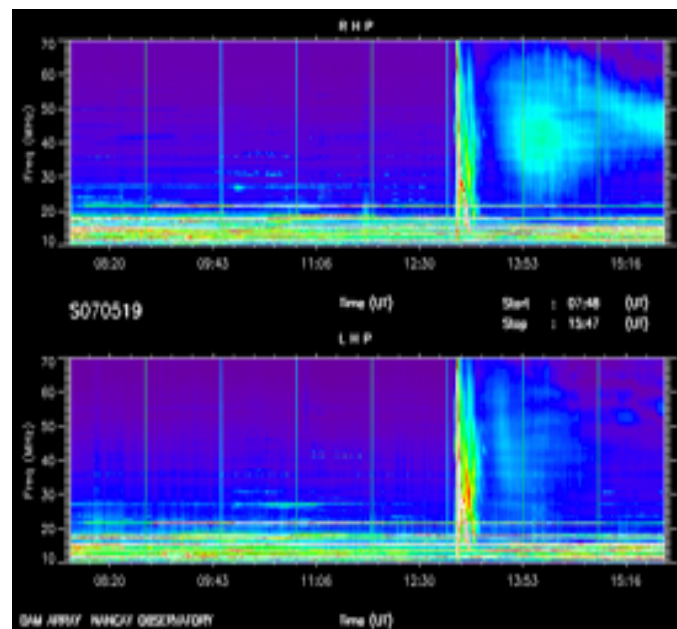
- Automatic pipeline execution
- Routine parallel observations
- Routine archive operations
- Support direct storage modes

Pipeline Integration II

- Standard Imaging upgrades
- Transient Detection
- Pulsar Surveys
- Solar Spectral mode
- UHEP mode

Station Integration III

- LOFAR36
- LOFAR36+INTBL08



- Primary focus on testing system functions
- Clearly identify system capability to be tested
- Describe required system status
- Describe required observations (new or existing)
- Describe analysis procedure to be used
- Define deliverables (report, algorithm, scripts, etc.)
- Include estimates of required computing resources
- Identify available personnel for project
- Estimate time to complete project