



Round of 16

Belgium - Japan 3:2 (0:0)

54 02 JUL 2018 21:00 Rostov-On-Don / Rostov Arena / RUS

Att: 41.466

Referee: Malang DIEDHIOU (SEN)
 Assistant referee 1: Djibril CAMARA (SEN)
 Assistant referee 2: El Hadji SAMBA (SEN)
 General coordinator: Priscilla JANSSENS (BRA)

Reserve assistant referee: Jean Claude BIRUMUSHAHU (BDI)
 4th official: Bakary GASSAMA (GAM)
 Match commissioner: Janis MEZECKIS (LVA)

VAR: Felix ZWAYER (GER)
 AVAR 1: Clement TURPIN (FRA)
 AVAR 2: Mark BORSCH (GER)
 AVAR 3: Danny MAKKELIE (NED)

Belgium (BEL)

[1] GK Thibaut COURTOIS
 [2] DF Toby ALDERWEIRELD
 [4] DF Vincent KOMPANY
 [5] DF Jan VERTONGHEN ⚽ 69'
 [6] MF Axel WITSEL
 [7] MF Kevin DE BRUYNE
 [9] FW Romelu LUKAKU
 [10] FW Eden HAZARD (C) ⚽ 74'
 [11] MF Yannick CARRASCO ▼ 65'
 [14] FW Dries MERTENS ▼ 65'
 [15] DF Thomas MEUNIER ⚽ 90'+4

Substitutes

[3] DF Thomas VERMAELEN
 [8] MF Marouane FELLAINI ▲ 65' ⚽ 74'
 [12] GK Simon MIGNOLET
 [13] GK Koen CASTEELS
 [16] MF Thorgan HAZARD
 [17] MF Youri TIELEMANS
 [18] FW Adnan JANUZAJ
 [19] MF Moussa DEMBELE
 [20] DF Dedryck BOYATA
 [21] FW Michy BATSHUAYI
 [22] MF Nacer CHADLI ▲ 65' ⚽ 90'+4
 [23] DF Leander DENDONCKER

Coach Roberto MARTINEZ (ESP)

Japan (JPN)

[1] GK Eiji KAWASHIMA
 [3] DF Gen SHOJI
 [5] DF Yuto NAGATOMO
 [7] MF Gaku SHIBASAKI □ 40' ⚽ 48' ▼ 81'
 [8] MF Genki HARAGUCHI ⚽ 48' ▼ 81'
 [10] MF Shinji KAGAWA ⚽ 52'
 [14] MF Takashi INUI ⚽ 52'
 [15] FW Yuya OSAKO
 [17] MF Makoto HASEBE (C)
 [19] DF Hiroki SAKAI
 [22] DF Maya YOSHIDA

Substitutes

[2] DF Naomichi UEDA
 [4] MF Keisuke HONDA ▲ 81'
 [6] DF Wataru ENDO
 [9] FW Shinji OKAZAKI
 [11] MF Takashi USAMI
 [12] GK Masaaki HIGASHIGUCHI
 [13] FW Yoshinori MUTO
 [16] MF Hotaru YAMAGUCHI ▲ 81'
 [18] MF Ryota OHSHIMA
 [20] DF Tomoaki MAKINO
 [21] DF Gotoku SAKAI
 [23] GK Kosuke NAKAMURA

Coach Akira NISHINO (JPN)

Additional time:

First half: 1' min., Second half: 4' min.

| Match events | Goal scored | Own goal | Penalty scored | Penalty missed | Assist | Yellow card | 2Y | Red card | Substitution |
|--------------|-------------|----------|----------------|----------------|--|-------------|----|----------|--------------|
| | | | 40' | □ | Gaku SHIBASAKI [7] | | | | 1st half |
| | | | 48' | ⚽ | Genki HARAGUCHI [8] - 1st Tournament Goal | | | | 2nd half |
| | | | | ⚽ | Gaku SHIBASAKI [7] - 1st Tournament Assist | | | | |
| | | | 52' | ⚽ | Takashi INUI [14] - 2nd Tournament Goal | | | | |
| | | | | ⚽ | Shinji KAGAWA [10] - 1st Tournament Assist | | | | |
| | | | 65' | ⚡ | in Marouane FELLAINI [8], out Dries MERTENS [14] | | | | |
| | | | 65' | ⚡ | in Nacer CHADLI [22], out Yannick CARRASCO [11] | | | | |
| | | | 69' | ⚽ | Jan VERTONGHEN [5] - 1st Tournament Goal | | | | |
| | | | 74' | ⚽ | Marouane FELLAINI [8] - 1st Tournament Goal | | | | |
| | | | | ⚽ | Eden HAZARD [10] - 2nd Tournament Assist | | | | |
| | | | 81' | ⚡ | in Hotaru YAMAGUCHI [16], out Gaku SHIBASAKI [7] | | | | |
| | | | 81' | ⚡ | in Keisuke HONDA [4], out Genki HARAGUCHI [8] | | | | |
| | | | 90'+4 | ⚽ | Nacer CHADLI [22] - 1st Tournament Goal | | | | |
| | | | | ⚽ | Thomas MEUNIER [15] - 2nd Tournament Assist | | | | |

Att : Attendance

VAR : Video Assistant Referee

VAR 1 : Assistant VAR

VAR 2 : Offside VAR

AVAR 3 : Support VAR

(C) : Captain

A : Absent

PSO : Penalty shoot-out

Y : Single yellow card

AET : After extra time

I : Injured

HT : Half-time

R : Direct red card

ETHHT : Extra time half time

N : Not eligible to play

FT : Full-time

2Y : Expulsions due to Second Caution

2018 FIFA WORLD CUP RUSSIA™
FIFA PARTNERS

Match statistics



FIFA WORLD CUP
RUSSIA 2018

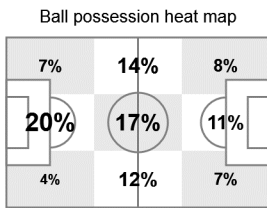
Round of 16

Belgium - Japan 3 : 2 (0 : 0)

54 02 JUL 2018 21:00 Rostov-On-Don / Rostov Arena / RUS

Att: 41.466

Belgium (BEL)



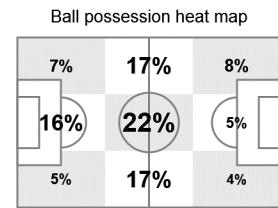
Attacking direction →

24/8
6
13
10
0
0
0/0
1
0
0
0
0
0
0
0
56%
34

Statistics *

Total shots/shots on goal
Shots blocked
Fouls
Corner kicks
Attempts from direct free kicks
Indirect free kick towards goal
Penalty kicks/Converted
Offsides
Own goals
Cautions
Expulsions due to second caution
Direct expulsions
Ball possession
Actual playing time

Japan (JPN)



Attacking direction →

11/4
3
9
6
1
0
0/0
1
0
0
1
0
0
0
44%
27

BUD Man of the Match: 10, Eden HAZARD (Belgium)

| # | Name | Pos | Min | GF | GA | AS | S/SG | PK | Fouls FC FS | Y | 2Y | R |
|--------------------|--------------|-----|-----|----|----|----|------|----|----------------|---|----|---|
| 1 | COURTOIS | GK | 90 | | 2 | | | | | | | |
| 2 | ALDERWEIRELD | DF | 90 | | | | | | | | | |
| 4 | KOMPANY | DF | 90 | | | | 2/0 | 4 | 1 | | | |
| 5 | VERTONGHEN | DF | 90 | 1 | | | 2/2 | | | | | |
| 6 | WITSEL | MF | 90 | | | | 2/0 | | | | | |
| 7 | DE BRUYNE | MF | 90 | | | | 2/0 | 2 | 1 | | | |
| 9 | R. LUKAKU | FW | 90 | | | | 6/1 | 2 | | | | |
| 10 | E. HAZARD | FW | 90 | | | 1 | 3/1 | | 5 | | | |
| 11 | CARRASCO | MF | 65 | | | | 1/0 | 2 | | | | |
| 14 | MERTENS | FW | 65 | | | | 1/1 | | 1 | | | |
| 15 | MEUNIER | DF | 90 | | | 1 | 2/0 | 2 | | | | |
| Substitutes | | | | | | | | | | | | |
| 8 | FELLAINI | MF | 25 | 1 | | | 1/1 | | | | | |
| 22 | CHADLI | MF | 25 | 1 | | | 2/2 | 1 | | | | |
| Own goals | | | | | | | | | | | | |
| Totals | | | | 3 | 2 | 2 | 24/8 | | 13 | 8 | | |

| # | Name | Pos | Min | GF | GA | AS | S/SG | PK | Fouls FC FS | Y | 2Y | R |
|--------------------|-----------|-----|-----|----|----|----|------|----|----------------|----|----|---|
| 1 | KAWASHIMA | GK | 90 | | 3 | | | | | | | |
| 3 | SHOJI | DF | 90 | | | | 1/0 | | 1 | | | |
| 5 | NAGATOMO | DF | 90 | | | | 2/0 | | 1 | 1 | | |
| 7 | SHIBASAKI | MF | 81 | | | 1 | | | 2 | | 1 | |
| 8 | HARAGUCHI | MF | 81 | 1 | | | 2/1 | | 1 | 1 | | |
| 10 | KAGAWA | MF | 90 | | | 1 | 1/0 | | 1 | | | |
| 14 | INUI | MF | 90 | 1 | | | 3/2 | | 1 | | | |
| 15 | OSAKO | FW | 90 | | | | | | 1 | 4 | | |
| 17 | HASEBE | MF | 90 | | | | | | 2 | 1 | | |
| 19 | H.SAKAI | DF | 90 | | | | | | | 2 | | |
| 22 | YOSHIDA | DF | 90 | | | | | | 1 | 1 | | |
| Substitutes | | | | | | | | | | | | |
| 4 | HONDA | MF | 9 | | | | 2/1 | | | | | |
| 16 | YAMAGUCHI | MF | 9 | | | | | | | | | |
| Own goals | | | | | | | | | | | | |
| Totals | | | | 2 | 3 | 2 | 11/4 | | 9 | 12 | 1 | |

Pos : Position
GK : Goalkeeper
DF : Defender
MF : Midfielder
FW : Forward
(C) : Captain

Min : Minutes played
GF : Goals for
GA : Goals against
PK : Penalty kicks (Goals / Shots)
2Y : Expulsions due to Second Caution
AS : Assist

FC : Fouls committed
FS : Fouls suffered
Y : Single yellow card
R : Direct red card
S : Total shots
SG : Shots on goal

* Please check FIFA.com for updates on the statistics

2018 FIFA WORLD CUP RUSSIA™
FIFA PARTNERS

