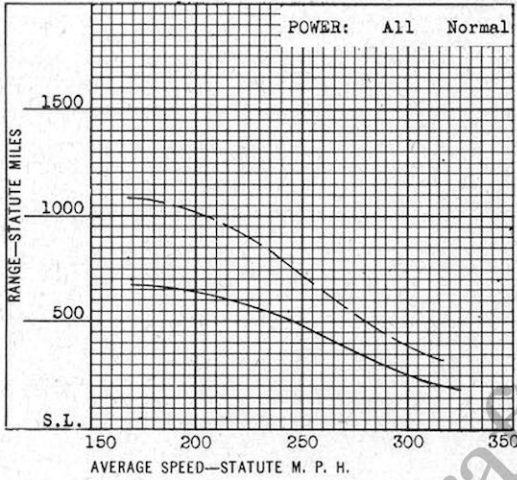


GEORGE 11

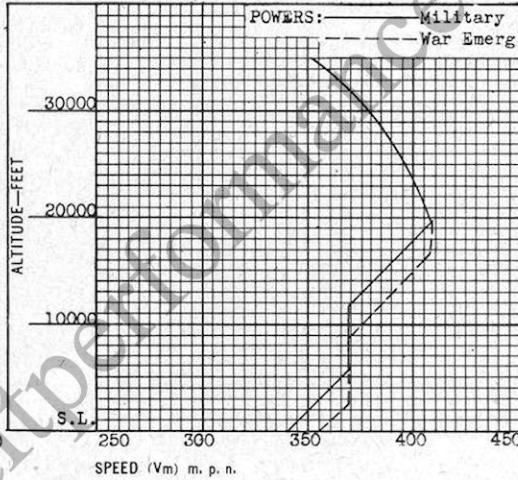
RANGE * SPEED * CLIMB

KEY	CONDITION	WEIGHT (lb.)	FUEL LOAD (lb.)	BOMBS—CARGO (lb.)
—————	FIGHTER	7717	750	None
- - - - -	FIGHTER	7717	750	None
—————	FIGHTER EXT. FUEL	8390	1272	None

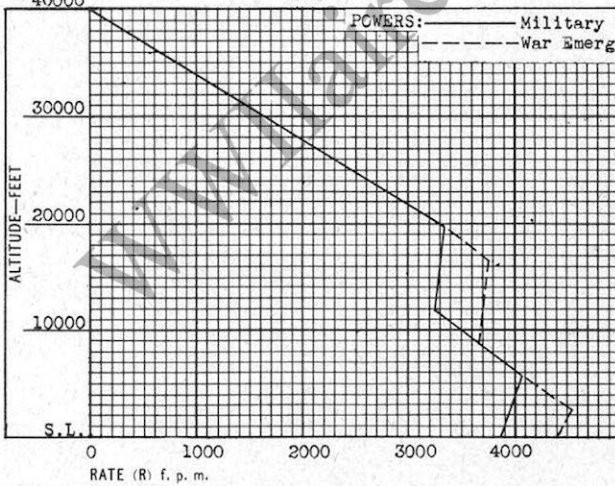
RANGE VS. SPEED



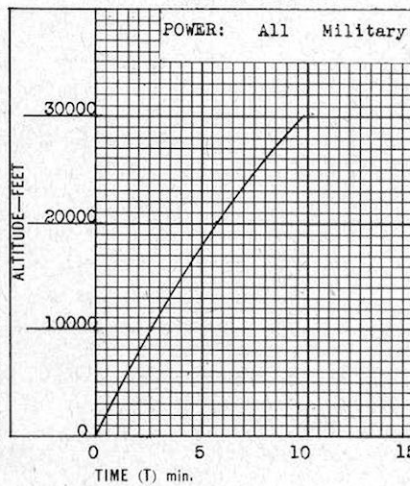
SPEED VS. ALTITUDE



RATE OF CLIMB



TIME TO ALTITUDE



PERFORMANCE AND CHARACTERISTICS

GEORGE 11

TAKE-OFF

	Load	Feet
Runway Requirements	7717	1430
T.O. over 50' obstacle		
Landing over 50' obstacle		
*T.O. + 100%		

CLIMB—CEILING

@ 7717 lbs.	lbs.	Feet	Min.
Rate @ S.L.		3875	1
Rate @ 5900 ft.		4065	1
Time to 10,000'			2.6
Time to 20,000'			5.6
Service ceiling		39,400'	

AIRCRAFT

Duty Fighter
Designation Shiden (Model 11) N1K1-J
Description Low-mid-wing Monoplane
Mfg. Kawanishi
Engines 1 Crew 1
Construction All Metal

SPEED

@ 7717 lbs.	Mph.	Knts.	Altitude
Maximum	355	308	@ S. L.
Maximum	408	353	@ 20,000'
Cruising			
Economical			

BOMBS—CARGO

	No.	Size	Total Lbs.
Normal			None
Maximum			

ENGINES

	H. P.	Altitude
Take-off	1975	S.L.
Normal	1640	7100'
Military	1875	5900'
	1675	19620'
War Emerg.	2050	2500'

WEIGHTS

	Lbs.
Empty	5962
Gross	7717
Overload	8390

FUEL

	U.S. gal.	Imp. gal.
Built-in	125	105
Internal (Removable)		
External (drop)	87	71
Maximum	212	176

Mfg. Nakajima
Model Homare 21
Type Radial
Cylinders 18 Cooling Air
Supercharger 2 Speed
Propeller 4 Blade Diam. 9.8'
CSVP
Fuel - Take-off 92 Cruising 92 Plus methanol

RANGE AND RADII

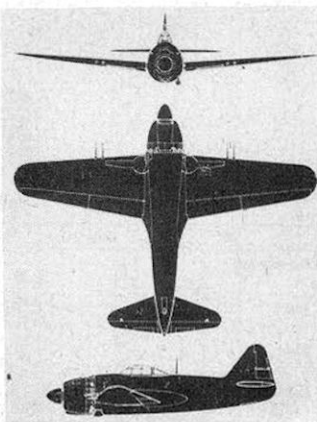
	Miles		Speed		Alt. feet	Fuel gal.		Bombs lbs.	Cargo lbs.
	stat.	naut.	mph.	Knts.		U. S.	Imp.		
Maximum range (maximum fuel)	1085	941	167	143	1500	212	176	None	None
At 75% Vmax.	830	720	237	205	1500	212	176	None	None
Maximum range (normal fuel)	670	580	169	147	1500	125	105	None	None
At 75% Vmax.	505	438	243	211	1500	125	105	None	None
Radius ()									
Radius ()									

DIMENSIONS

Span 39.4'	Length 28'
Height 13.3'	Wing area 253 sq. ft.

GENERAL DATA

A new performance sheet will be issued shortly on GEORGE. Recent findings have made some variations in the above figures.



GEORGE 11

Vulnerability, Fields of Fire, etc.

WWIIaircraftperformance.org

ARMAMENT

TACTICAL DATA

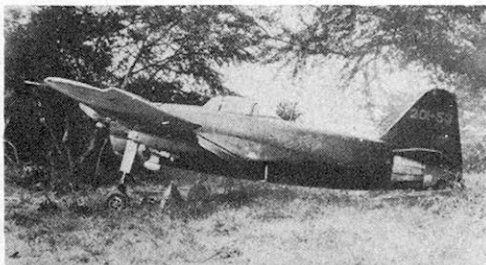
	No.	Size	Rds. Gun	Type		No.	Size	Rds. Gun	Type
Forward					Tail				
Top					Wing				
Side									
Bottom									

DATE March 1945

RESTRICTED

GEORGE 11

Drawing



RESTRICTED

DATE March 1945