

Annual Report 2007–2008



ROUNABOUTTHEATRECOMPANY

ROUNDAABOUTHEATRECOMPANY

BOARD OF DIRECTORS

CHAIRMAN Thomas E. Tuft <i>Managing Director</i> Goldman Sachs & Co.	Mike de Graffenried Douglas Durst <i>Co-President</i> The Durst Organization	David E. Massengill John P. McGarry, Jr. <i>Chief Executive Officer</i> mcgarrybowen	Steven Schroko <i>Managing Director</i> UBS Private Bank Chip Seelig Dune Capital Management
VICE CHAIRMAN Mary C. Solomon	Patricia R. Goldstein	Akiko Mikumo <i>Partner</i> Weil, Gotshal & Manges, LLP	Donna J. Slade
PRESIDENT Todd Haimes <i>Artistic Director</i> Roundabout Theatre Company	Perry B. Granoff Maureen A. Hayes Chuck Imhof <i>Managing Director – Greater NY Division</i> American Airlines	Carol Mitchell Cynthia Nixon	Barbara Schaps Thomas <i>Senior Vice President and Chief Financial Officer</i> HBO Sports
TREASURER Samuel R. Chapin <i>Vice Chairman</i> Merrill Lynch	Abby F. Kohnstamm	Laura Pels <i>President</i> The Laura Pels Foundation	<hr/> CHAIRMEN EMERITUS Christian C. Yegen Steven F. Goldstone
SECRETARY Lawrence Kaplen Leslie E. Bains <i>Vice Chairman</i> The Modern Bank, N.A.	Gene R. Korf <i>Attorney</i> Korf & Rosenblatt Carole S. Krumland	Jill F. Rachesky Charles Randolph-Wright Lois Robbins	<hr/> DIRECTOR EMERITUS Bob Donnalley <hr/> Todd Haimes <i>Artistic Director</i>
James J. Burke, Jr. <i>Founder</i> Stonington Partners, Inc.	Cathy Lasry Mark J. Manoff <i>Vice Chairman, Northeast Area Managing Partner</i> Ernst & Young, LLP	Steven A. Sanders <i>Partner</i> Sanders, Ortoli, Vaughn-Flam & Rosenstadt, LLP	<hr/> Harold Wolpert <i>Managing Director</i> Julia C. Levy <i>Executive Director</i>
Mary Cirillo-Goldberg Michael T. Cohen <i>President</i> Williams Real Estate			<hr/> Scott Ellis <i>Associate Artistic Director</i>

LEADERSHIP COUNCIL

CHAIRMAN Yolanda R. Turocy <i>Managing Director</i> Neuberger Berman, LLC	Boyd Gaines Bill Giove <i>President</i> Giove Company, Inc.	Brian Murray Liam Neeson	Rebecca Sullivan <i>Health Advocate</i> PinnacleCare International
Polly Bergen Lynn Davis <i>Managing Director</i> Bank of America Private Wealth Management	Jodi Glucksman <i>Curriculum Consultant</i> Luckimann Productions, LLC	Christopher Plummer Natasha Richardson Ron Rifkin	Barry C. Waldorf <i>Retired, Managing Director</i> U.S. Trust Company of New York Tony Walton
Linda D'Onofrio <i>Partner</i> Blank Rome, LLP	Cherry Jones Frank Langella Helen Mirren	Laura Suzanne Rodgers Ann Scheuer Patricia A. Stockhausen <i>President</i> Emergency Management Training	Patricia S. Wolpert Wolpert Consulting
Christopher M. Formant <i>President</i> Avaya Global Services	Kenneth F. Murphy		

FRONT cover photos clockwise from top left: Jason Fuchs, Sarah Steele, and Gideon Glick in *Speech & Debate*; Jefferson Mays, Jay O. Sanders, and Boyd Gaines in *Pygmalion*; Ben Daniels and Laura Linney in *Les Liaisons Dangereuses*; Owiso Odera and Linda Powell in *The Overwhelming*; Richard Thomas and Alan Mandell in *Twelve Angry Men* Tour; cast of *Sunday in the Park with George*; *The Truth Within*, VOICES after school program; Rosie Perez, Kevin Chamberlin, Terrence Riordan, and Brooks Ashmanskas in *The Ritz*; Claire Danes and Jefferson Mays in *Pygmalion*; Charles Edwards, Arnie Burton, Cliff Saunders, and Jennifer Ferrin in *The 39 Steps*
BACK cover photos clockwise from top left: Sarah Paulson, Jennifer Dundas, and Lily Rabe in *Crimes of the Heart*; Heather Burns, Zoe-Lister Jones, Adam LeFevre, John Glover, Victoria Clark, and Kate Jennings Grant in *The Marriage of Bette and Boo*; Charles Edwards and Jennifer Ferrin in *The 39 Steps*; cast of *Sunday in the Park with George*; Lucas Near-Verbrugge, Rosie Perez, David Turner in *The Ritz*; Ben Daniels and Mamie Gummer in *Les Liaisons Dangereuses*; Rosie Perez in *The Ritz*



Letter from the Chairman

Our 42nd season was one for the record books. Roundabout Theatre Company was not only represented in New York City by nine productions on four stages, but also seen by audiences across the country through the second year of our critically-acclaimed national tour of *Twelve Angry Men*. This unprecedented wealth of theatrical productions earned a huge number of accolades, including a record 20 Tony Award® nominations. This season was not-for-profit theatre as it is meant to be: diverse, challenging, captivating, and entertaining.

The main reason for the incredible artistic and institutional health of Roundabout is Artistic Director Todd Haines, who celebrated his 25th season this year. When he began as Roundabout's managing director in 1983, he stepped into a 300-seat Off-Broadway theatre reeling from years in Chapter 11 and on the brink of disaster. Todd has steadily expanded the company artistically and institutionally, and today we are stronger than we have ever been. It is an honor to work with him and to acknowledge his profound contributions to Roundabout on this important milestone.

During his tenure, Todd has overseen the acquisition of permanent theatrical homes for our work, including the purchase of Studio 54. This season saw the conclusion of our ambitious \$32 million capital campaign to pay for important renovations to this historic theatre, as well as the beginning of a much-needed endowment to secure Roundabout's future. Although the vast majority of the work was done to the infrastructure of Studio 54 and is mostly invisible to our theatregoers, it has brought this 80-year-old theatre into the 21st century with brand-new electrical, sound, and lighting systems that allowed a technologically cutting-edge production like *Sunday in the Park with George* to call it home this season. We've also created amenities that every audience member can appreciate, including new bathrooms and a sleek donor lounge. Thank you most sincerely to Mayor Michael Bloomberg and Speaker Christine Quinn and the New York City Council for funding much of this renovation. I'd also like to personally thank Vice Chair Mary Solomon for her leadership of the campaign, as well as the Campaign Committee, and the fellow members of our Board for their support. Thank you also to the Harold and Mimi Steinberg Charitable Trust, The Kaplen Foundation, and The Kresge Foundation, whose Challenge Grant helped us to meet our ambitious financial goal.

It is with great warmth and a bit of sadness that I bid adieu to two colleagues as they retire from full-time participation on our Board: Chris Yegen and Bob Donnalley. Chris joined the Board in 1979 and was Roundabout's financial savior in our darkest hour. Since that time, he has twice served as chairman, rendering outstanding leadership to the entire Board. Bob has been a Board member since 1990 and his financial generosity and invaluable guidance have been crucial during our biggest period of growth. Both men have made an indelible mark on Roundabout and their names will live on in perpetuity as the namesakes of the Yegen/Donnalley Lounge at the Harold and Miriam Steinberg Center for Theatre. The Board is proud to honor them for their years of service by naming Chris as Chairman Emeritus and Bob as Director Emeritus.

Finally, I would like to thank all of you: our loyal subscribers, our generous donors, our incredible staff, our supremely talented artists, and, of course, my fellow Board members. It is your support that makes our work at Roundabout possible. This year alone we reached almost 1 million theatergoers across the country. We hope you will continue to support our work as we engage and delight audiences for years to come.

Thomas E. Tuft

CHAIRMAN OF THE BOARD



Clockwise from top left: Sharon Washington, Chris Chalk (background), Linda Powell in *The Overwhelming*; Kate Jennings Grant and Christopher Evan Welch in *The Marriage of Bette and Boo*; Daniel Evans in *Sunday in the Park with George*; cast of *Sunday in the Park with George*; Lily Rabe and Sarah Paulson in *Crimes of the Heart*; Charles Edwards and Arnie Burton in *The 39 Steps*.



Letter from the Artistic Director

As artistic director of Roundabout Theatre Company, people often ask how each season gets put together. It's a simple question to which there isn't a simple answer. I often wish it were as easy as picking a rich mix of plays and musicals and slotting them each into our season, but the process is much more complex. Theatre is a collaborative art form, and as a not-for-profit company, we have a commitment to nurturing artists by challenging them with great works of theatre. Thus, it is imperative that we put together the right creative team and match that team with the right play or musical. And sometimes that takes time. At any given moment, Roundabout has 20 to 30 productions in the works, waiting for the moment when the stars align and it can finally appear on one of our stages.

In our 2007–08 season, the stars aligned to spectacular effect, allowing our subscribers and audiences to see the work of top theatre artists in a bold and eclectic slate of productions. In the fall, audiences could travel to Edwardian England in a daring new interpretation of *Pygmalion* at the American Airlines Theatre; to 1990s Rwanda in a provocative new play, *The Overwhelming*, at the Laura Pels Theatre; and to the gay underworld of 1970s New York City in a revival of *The Ritz* at Studio 54. And that's only three of the nine productions on our stages! It's so gratifying—both professionally and personally—to be able to present such a wide range of work all under the auspices of Roundabout.

With so much outstanding work by such a wide variety of artists in one season, it's impossible to pick a favorite production. Yet two stand out for me, but both for very different reasons. The first was *Speech & Debate* by Stephen Karam, a small play that's had a big impact on our organization. As described later in this report, our passion for this play reinforced Roundabout's belief that early-career authors need a safe place to take risks and nurture their craft; thus began a brand-new initiative: Roundabout Underground. *Speech & Debate* was the first production of this initiative, and we couldn't have hoped for a better start. A second production that's particularly close to my heart allowed me to continue a relationship with an artist that I consider absolutely indispensable to both Roundabout and American theatre: Stephen Sondheim. It was such a pleasure to have a new, artistically innovative production of one of his masterpieces, *Sunday in the Park with George*, on the Studio 54 stage and to once again observe first-hand Steve's unbelievable generosity to and encouragement of the next generation of theatre artists.

Making professional theatre accessible to all audiences is an important part of our not-for-profit mission and we increased our efforts this year with Access Roundabout. This season we offered 22,000 deeply discounted tickets through a series of innovative and popular initiatives including \$10 First Preview; a \$20 ticket for Roundabout Underground productions; our popular HipTix program for young professionals; ½ Price Tickets for Kids; Rush Tickets; and more. Allowing young and underserved audiences the opportunity to explore new worlds and theatrical styles through these programs is particularly gratifying.

I'm blessed at Roundabout to work with such extraordinary people: the new and returning artists who share their extraordinary talent, the best staff in the business, a dedicated Board of Directors under the leadership of Tom Tuft, and our family of donors and subscribers. In the following pages, you will read about the fruits of our collective labor, including a full slate of developmental readings and workshops to nurture plays and musicals for future seasons; our annual gala in which artists give so freely of their time and talent to raise funds for Roundabout; and our city-wide education programs. I'm so proud to have your support.

A handwritten signature in blue ink that reads "Todd Haimes". The signature is fluid and cursive, with a large initial "T".

Todd Haimes

ARTISTIC DIRECTOR

MISSION POSSIBLE

ROUNABOUT THEATRE COMPANY serves a multifaceted artistic mission that has evolved over its 42 years. What began as a small company dedicated to classic plays is now one of the largest not-for-profit theatre companies in the country. Roundabout serves artists and audiences through innovative productions of new plays and musical revivals. In addition, Roundabout conducts vital artistic development programs with readings, workshops, and new play commissions, as well as education programs that serve our community. Throughout its 2007–08 season, Roundabout demonstrated its maturity as a not-for-profit theatre in full bloom by presenting a diverse slate of theatrical activity. By looking back at this season, we can see the progression of that mission over the years and how it now plays out on each of Roundabout's four stages.

CLASSICAL CANON

When Roundabout began in 1965, its mission was simple: team great theatrical works with the industry's finest artists in order to re-energize classic plays for a loyal subscription audience. That mission is still going strong as evidenced by the first production at the American Airlines Theatre, George Bernard Shaw's *Pygmalion*. For this production, director David Grindley returned to the original text of the play, unenhanced by the additions of subsequent film adaptations. There, he rediscovered Henry Higgins as a 40-year-old man in a state of arrested development, pampered by his upbringing and impervious to the feelings of others, rather than the older, debonair Higgins most audiences associate with the role. To bring this new interpretation to life, Grindley enlisted Tony Award® winner Jefferson Mays as Higgins, Tony Award® winner Boyd Gaines as Colonel Pickering, and an effervescent Claire Danes in her Broadway debut. The result was a controversial production that crackled with new life as these three actors expertly wrestled with Shaw's themes of class, transformation, and human kindness. It succeeded in doing what Roundabout tries to do with each production: see a work in a new light through bold reinvention.

Christopher Hampton's 1985 play *Les Liaisons Dangereuses* is adapted from a classic 1782 novel by Pierre Choderlos de Laclos. Taking place just before the French Revolution, the play shows the decadence of the French aristocracy through a cruel game played between two former lovers who eagerly use people as pawns and sex as the ultimate weapon. This production simmered for three years before the perfect team was finally assembled: director Rufus Norris, Academy Award® nominee Laura Linney as La Marquise de Merteuil, and Ben Daniels in his Broadway debut as La Vicomte de Valmont. Along with a talented team of designers, they brought the elegance and



Richard Thomas in *Twelve Angry Men*

debauchery of this bygone world to life, reinterpreting these classic characters for a new generation of audiences.

Audiences around the country have had the opportunity to experience one of Roundabout's classic revivals first-hand in an unprecedented second year of a wildly successful national tour: Reginald Rose's *Twelve Angry Men*. Recreating the magic of his acclaimed Broadway production, director Scott Ellis put together a stellar cast, including Richard Thomas as Juror #5. Straight plays are usually a tough sell in the musical-heavy touring market, but audiences and critics across the country have embraced this timeless story of one jury's deliberations and one man's deeply felt responsibility to pursue the truth. Through this tour, Roundabout has extended its reach to become a truly national theatre company.

MODERN MARVELS

As Roundabout expanded over the years, it began to look beyond the established canon to include more contemporary plays that deserved to be seen anew. This season, Roundabout brought three of these plays to life, beginning with Terrence McNally's ribald farce, *The Ritz*, which hadn't been seen on Broadway since its debut in 1975. Set in a gay bathhouse in New York City, the play had all the elements of classic farce: mistaken identity, outrageous characters, and dozens of doors. In his first production at Roundabout since his Tony Award®-winning production of *Assassins* in 2004, director Joe Mantello kept the action fast and furious as a mild-mannered businessman tried to escape a Mafia hit by hiding in the eponymous club. Audiences delighted as the cast of 25 took Studio 54 by storm, including Kevin Chamberlin, Brooks Ashmanskas, and Rosie Perez delivering a madcap musical turn as the deluded nightclub singer Gogie Gomez.

It was a joy to welcome back writer Beth Henley, author of Roundabout's 1998 production, *Impossible Marriage* (which was the first play commissioned by Roundabout), with a brand new production of her most acclaimed play at



Rosie Perez and Kevin Chamberlin in *The Ritz*



Sarah Paulson, Jennifer Dundas, and Lily Rabe in *Crimes of the Heart*

the Laura Pels Theatre in the Harold and Miriam Steinberg Center for Theatre. Winner of the 1982 Pulitzer Prize, *Crimes of the Heart* is a true ensemble piece about three sisters in 1970s Mississippi and the secrets and love that bind them together. To bring these finely wrought characters to life, none other than Academy Award®-nominated actress Kathleen Turner made her NYC directing debut. Also at the Pels was a stunning revival of Christopher Durang's *The Marriage of Bette and Boo*. In this jet-black, semi-autobiographical comedy, Durang doesn't shy away from one family's troubling legacy of alcoholism, religious fervor, and mental illness. Director Walter Bobbie (Roundabout's *The Twentieth Century*) delivered a pitch-perfect production featuring Victoria Clark, John Glover, Julie Hagerty, and Christopher Evan Welch deftly finding the delicate balance between humor and pathos.

MESMERIZING MUSICALS

When Todd Haimes took over the reins as artistic director in 1989, he quickly realized that there were many classic works of a uniquely American form of theatre that were being neglected. This mission inspired Roundabout's acclaimed Musical Theatre program, which rediscovered a string of critically-acclaimed productions such as *She Loves Me*, *1776*, *Cabaret*, *Nine*, and *The Pajama Game*. Not surprisingly, the work of a single composer has been seen on Roundabout's stages again and again: Stephen Sondheim. Through first-class revivals of *Company*, *Follies*, *Assassins*, and *Pacific Overtures*, Sondheim has become an esteemed member of the Roundabout family, always eager to allow startling new interpretations of his seminal works. A case in point was this season's production of *Sunday in the Park with George*. A Pulitzer Prize winner in 1985, *Sunday* is well-remembered for the landmark original production directed by co-writer James Lapine.

Sunday in the Park with George is the fictionalized story of the real-life painter Georges Seurat and the creation of his masterpiece, “A Sunday Afternoon on the Island of La Grande Jatte.” Director Sam Buntrock had an idea: what if the audience could enter Georges’ head and see the park depicted in the painting evolve on stage from his first brush stroke to the final canvas? With a background in computer animation for film, Buntrock began to develop ways to adapt this technology to the stage and bring his vision to life. The result was a rare feat: cutting-edge technology that thoroughly enhanced the work on stage. As performed by Olivier Award winners Daniel Evans and Jenna Russell and a terrific cast, this production redefined both a classic musical and the possibilities of the stage.

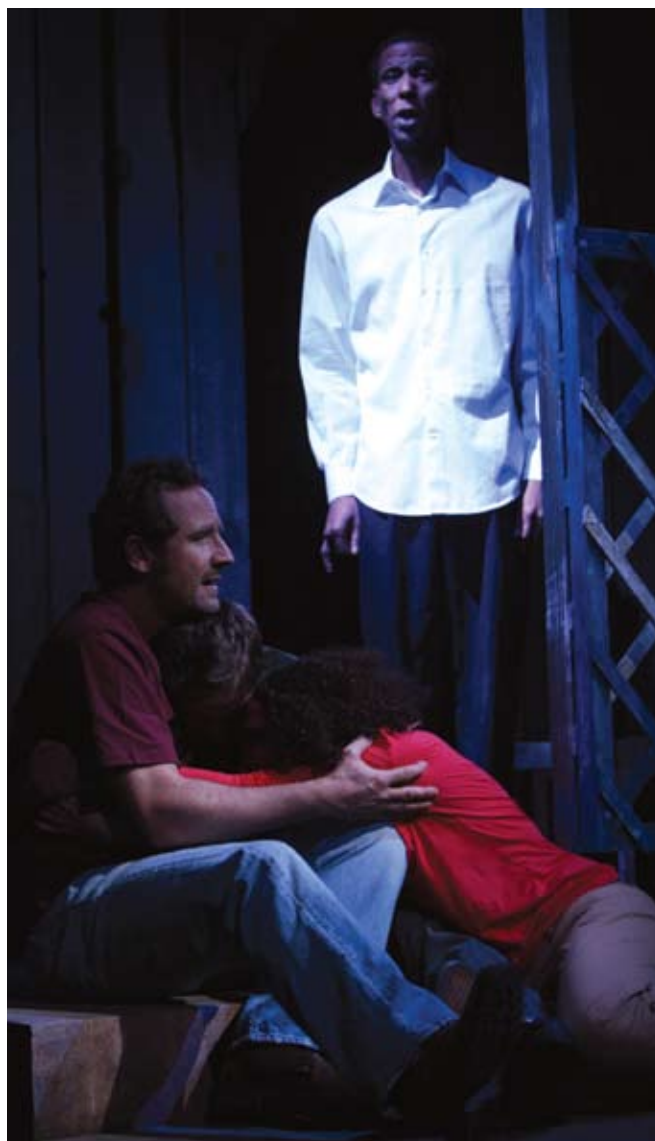
BRING IN THE NEW

Over the years, many of the writers whose work was presented by Roundabout in revival were interested in seeing their new work produced by the growing company. Haimes assessed the situation and created the New Play Initiative with important support by the Laura Pels Foundation and The Harold and Mimi Steinberg Charitable Trust. Established to focus on new plays by established writers, Roundabout has since had a rich legacy of new work such as the American premiere of J.T. Rogers’ *The Overwhelming*, a vivid piece of political theatre. Set just before the Rwandan genocide of 1994, this rich drama focused on an American family recently transplanted to the African nation and its attempts to help a country it doesn’t begin to understand.

New plays come in all stripes and Alfred Hitchcock’s *The 39 Steps* offered a comic tonic for audiences of all ages.



Jenna Russell and Daniel Evans in *Sunday in the Park with George*



Sam Robards, Ron Cephas Jones, and Linda Powell in *The Overwhelming*



Jason Fuchs, Sarah Steele, and Gideon Glick in *Speech & Debate*

Adapted from the screenplay of the early Hitchcock thriller by writer Patrick Barlow and director Maria Aitken, a cast of four played over 100 characters in a theatrical tour de force that brought every plane chase, femme fatale, and McGuffin to life with only a few props, some costumes, and a whole lot of Tony Award®-winning sound and lighting. So successful was this production that it transferred to the Cort Theatre for an open-ended commercial run.

This year also saw the development of a second new play initiative called *Roundabout Underground* (see page 14) dedicated to writers at the beginning of their career and launched by Stephen Karam's comic gem, *Speech & Debate*. As directed by Jason Moore (*Avenue Q*, *Shrek*) and a youthful cast of four, *Speech & Debate* was a hilarious and timely exploration of the effects of the Internet age on a group of high school misfits. Since its Roundabout premiere, *Speech & Debate* has been performed at theatres across the country and has been optioned for a film, launching the career of the 26-year-old Karam.

ON STAGE...AND OFF

Although Roundabout produced five Broadway productions, four Off-Broadway productions, and one national tour, a large part of its work last season was done off stage as part of our artistic and education programs. We held 25 readings and workshops of a wide mix of new plays, new musicals, and revivals. For Roundabout, it's a chance to work on plays or musicals that are under consideration for a future season. For actors and directors, it's an opportunity to try out new roles or to see a production on its feet in rehearsal

conditions. For our donors, it's the prospect of getting a sneak peek at the next season. Last year, David Rabe's *Streamers*, directed by Scott Ellis, was staged as part of the Friends of Roundabout Playreading Series and is now part of the 2008–09 season.

Another important part of Roundabout's mission is to provide educational programs that will enrich the lives of children and adults. Described in full detail in the supplemental Education Report, these intensive programs reached 5,644 students in New York City alone and thousands more through the educational outreach of the *Twelve Angry Men* tour. These programs are a vital part of Roundabout's commitment to have a meaningful impact on our community.

In 2007–08, Roundabout productions played to over 833,600 audience members around the country, served over 40,000 subscribers, and hired over 400 artists and technicians. Roundabout is dedicated to pursuing and expanding its artistic mission to meet the needs of these artists and audiences. As Todd Haimes explains, "There are so many talented people out there who want to work in the theatre—actors, directors, playwrights, and designers. I feel like the more opportunity we can give to people, the stronger Roundabout will be and the stronger the American theatre will be."



Students attending a matinee of *Sunday in the Park with George* at Studio 54

AMERICAN AIRLINES THEATRE

Pygmalion

By George Bernard Shaw

September 21, 2007 through
December 16, 2007

DIRECTOR: David Grindley
SET DESIGN: Jonathan Fensom
COSTUME DESIGN: Jonathan Fensom
LIGHTING DESIGN: Jason Taylor
SOUND DESIGN: Gregory Clarke

ORIGINAL CAST: Claire Danes,
Jefferson Mays, Boyd Gaines, Jay O.
Sanders, Helen Carey, Brenda Wehle,
Kerry Bishé, Kieran Campion, Sandra
Shiple, Tony Carlin, Jonathan Fielding,
Robin Moseley, Doug Stender, Karen
Walsh, Jennifer Armour, Brad Heikes,
Curtis Shumaker

OPENING NIGHT: October 18, 2007

PERFORMANCES: 100
ATTENDANCE: 66,614

*Major support for this production provided by
The Blanche and Irving Laurie Foundation and the
New York City Department of Cultural Affairs.*

Alfred Hitchcock's The 39 Steps

Adapted by Patrick Barlow
Based on an original concept by
Simon Corble and Nobby Dimon
Based on the book by John Buchan

January 4, 2008 through
March 29, 2008

DIRECTOR: Maria Aitken
SET DESIGN: Peter McKintosh
COSTUME DESIGN: Peter McKintosh
LIGHTING DESIGN: Kevin Adams
SOUND DESIGN: Mic Pool

ORIGINAL CAST: Arnie Burton, Charles
Edwards, Jennifer Ferrin, Cliff Saunders

OPENING NIGHT: January 15, 2008

PERFORMANCES: 99
ATTENDANCE: 62,623

*Produced in association with Bob Boyett,
Harriet Newman/Ron Nicynski, Stewart F. Lane/
Bonnie Comley, Manocherian Golden Prods.,
Olympus Theatricals/Douglas Denoff,
Marek J. Cantor/Pat Addiss and
Huntington Theatre Company (Nicholas Martin,
Artistic Director; Michael Maso, Managing Director)
and Edward Snape for Fiery Angel Ltd.*

Les Liaisons Dangereuses

By Christopher Hampton

April 12, 2008 through July 6, 2008

DIRECTOR: Rufus Norris
SET DESIGN: Scott Pask
COSTUME DESIGN: Katrina Lindsay
LIGHTING DESIGN: Donald Holder
SOUND DESIGN: Paul Arditti

ORIGINAL CAST: Laura Linney, Ben
Daniels, Siân Phillips, Jessica Collins,
Mamie Gummer, Kristine Nielsen,
Benjamin Walker, Rosie Benton, Derek
Cecil, Kevin Duda, Delphi Harrington,
Tim McGeever, Nicole Orth-Pallavicini,
Jane Pfitsch

OPENING NIGHT: May 1, 2008

PERFORMANCES: 99
ATTENDANCE: 62,950

*Lead support provided by Roundabout's Play
Production Fund partners: Steven and Liz Goldstone,
The Blanche and Irving Laurie Foundation, Mary
and David Solomon. Additional support provided by
the Laura Pels Foundation, the National Endowment
for the Arts, and the Eleanor Naylor Dana Charitable
Trust.*



Claire Danes and Jefferson Mays in
Pygmalion



Charles Edwards, Arnie Burton, Cliff Saunders,
and Jennifer Ferrin in *The 39 Steps*



Ben Daniels and Mamie Gummer in
Les Liaisons Dangereuses



Laura Linney in *Les Liaisons Dangereuses*



Cast of *Sunday in the Park with George*

STUDIO 54



The Ritz

By Terrence McNally

September 15, 2007 through
December 12, 2007

DIRECTOR: Joe Mantello

SET DESIGN: Scott Pask

COSTUME DESIGN: William Ivey Long

LIGHTING DESIGN: Jules Fisher and

Peggy Eisenhauer

SOUND DESIGN: Tony Meola

ORIGINAL CAST: Rosie Perez, Kevin Chamberlin, Brooks Ashmanskas, Ashlie Atkinson, Patrick Kerr, Lucas Near-Verbrugghe, Terrence Riordan, Seth Rudetsky, Adam Sietz, David Turner, Lenny Venito, Ryan Idol, Teddy Coluca, Mark Leydorf, Billy Magnussen, Matthew Montelongo, Angela Pietropinto, Jeffrey Evan Thomas, Josh Breckenridge, Justin Clynes, Andrew R. Cooksey, Nick Mayo, Dillon Porter

OPENING NIGHT: October 11, 2007

PERFORMANCES: 99

ATTENDANCE: 75,410



Rosie Perez, Kevin Chamberlin, Terrence Riordan, and Brooks Ashmanskas in *The Ritz*

Sunday in the Park with George

Book by James Lapine

Music and Lyrics by Stephen Sondheim

January 25, 2008 through

June 29, 2008

DIRECTOR: Sam Buntrock

MUSICAL STAGING: Christopher Gattelli

MUSICAL SUPERVISOR: Caroline

Humphris

ORCHESTRATIONS: Jason Carr

SET & COSTUME DESIGN: David Farley

LIGHTING DESIGN: Ken Billington

SOUND DESIGN: Sebastian Frost

PROJECTION DESIGN: Timothy Bird

and The Knifedge Creative Network

ORIGINAL CAST: Daniel Evans, Jenna Russell, Michael Cumpsty, Alexander Gemignani, Jessica Molaskey, Mary Beth Piel, Ed Dixon, Santino Fontana, Jessica Grové, Alison Horowitz, Stacie Morgain Lewis, Drew McVety, Anne L. Nathan, Brynn O'Malley, David Turner, Andrew Varela, Colleen Fitzpatrick, Kelsey Fowler, Jeff Kready, Hayley Podschun, Steve Wilson

OPENING NIGHT: February 21, 2008

PERFORMANCES: 181

ATTENDANCE: 156,122

Lead support provided by Roundabout's Musical Theatre Fund partners: Perry and Marty Granoff, The Kaplen Foundation, John and Gilda McGarry, The Shen Family Foundation, Tom and Diane Tuft, Williams Real Estate.

Produced in association with the Menier Chocolate Factory (David Babani, Artistic Director), Bob Boyett, Debra Black, Jam Theatricals, Stephanie P. McClelland, Stewart F. Lane/Bonnie Comley, Barbara Manocherian/Jennifer Manocherian, and Ostar Productions.

In association with Caro Newling for Neal Street Productions and Mark Rubinstein.

Playwrights Horizons produced the original production of Sunday in the Park with George in 1983. Originally directed by James Lapine.

HAROLD & MIRIAM STEINBERG CENTER FOR THEATRE/LAURA PELS THEATRE

The Overwhelming

By J.T. Rogers

September 28, 2007 through
December 23, 2007

DIRECTOR: Max Stafford-Clark
SET DESIGN: Tim Shortall
COSTUME DESIGN: Tobin Ost
LIGHTING DESIGN: David Weiner
SOUND DESIGN: Gareth Fry

ORIGINAL CAST: Chris Chalk, Ron
Cephas Jones, Tisola Logan, Boris
McGiver, Owiso Odera, Charles Parnell,
Linda Powell, James Rebhorn, Sam
Robards, Michael Stahl-David, Sharon
Washington

OPENING NIGHT: October 23, 2007

PERFORMANCES: 101
ATTENDANCE: 24,740

The Overwhelming was the recipient of *The Blanche and Irving Laurie Foundation Theatre Visions Fund Award*. Additional support for this production provided by the *Andrew W. Mellon Foundation* and the *Laura Pels Foundation*. Support of *Roundabout's New Play Initiative* provided by *Altria*.

The Overwhelming was first produced and performed at the *National Theatre in London* on *May 17, 2006*. The play was originally developed at the *Salt Lake Acting Company* with support from the *NEA/TCG Theatre Residency Program* and further developed with the support of *PlayPenn*.



Sam Robards and Ron Cephas-Jones in
The Overwhelming

Crimes of the Heart

By Beth Henley

January 18, 2008 through
April 20, 2008

DIRECTOR: Kathleen Turner
SET DESIGN: Anna Louizos
COSTUME DESIGN: David Murin
LIGHTING DESIGN: Natasha Katz
ORIGINAL MUSIC/SOUND DESIGN:
John Gromada

ORIGINAL CAST: Patch Darragh,
Jennifer Dundas, Sarah Paulson, Lily
Rabe, Jessica Stone, Chandler Williams

OPENING NIGHT: February 7, 2008

PERFORMANCES: 108
ATTENDANCE: 32,325

Originally produced by Actors Theatre of Louisville in February 1979. *Crimes of the Heart* was given its *New York premiere by Manhattan Theatre Club in 1980*. Produced on the *Broadway stage by Warner Theatre Productions, Inc./Claire Nichtern, Mary Lea Johnson, Martin Richards and Francine LeFrak*.



Lily Rabe and Sarah Paulson in
Crimes of the Heart

The Marriage of Bette and Boo

By Christopher Durang

June 12, 2008 through
September 7, 2008

DIRECTOR: Walter Bobbie
SET DESIGN: David Korins
COSTUME DESIGN: Susan Hilferty
LIGHTING DESIGN: Donald Holder
SOUND DESIGN: Acme Sound Partners

ORIGINAL CAST: Terry Beaver, Heather
Burns, Victoria Clark, John Glover, Kate
Jennings Grant, Julie Hagerty, Adam
Lefevre, Zoe Lister-Jones, Charles
Socarides, Christopher Evan Welch

OPENING NIGHT: July 10, 2008

PERFORMANCES: 102
ATTENDANCE: 26,874

Support for this production provided by the *Henry Nias Foundation*, courtesy of *Dr. Stanley Edelman*.

Originally produced by The New York Shakespeare Festival in May 1985, Joseph Papp, President.



Adam Lefevre, Victoria Clark, and Zoe Lister-Jones
in *The Marriage of Bette and Boo*



Charles Parnell and Linda Powell in *The Overwhelming*

ROUNDAABOUT UNDERGROUND

In the winter of 2007, Roundabout produced a reading of a new play by 25-year-old Stephen Karam, a recent Brown University graduate. The play was smart, witty, and original, dealing comically yet empathetically with issues of privacy and scandal in the Internet age amongst a small group of Oregon high school students. Artistic Director Todd Haimes loved the play, but felt that neither this charming, four-character play, nor the young author would be well-served by the demands of a production in one of our large mainstage theatres. Instead of recommending it to a smaller theatre to produce, Haimes created an exciting new initiative, *Roundabout Underground*, which was launched this season with Karam's play, *Speech & Debate*.

Roundabout Underground is dedicated to producing new plays by playwrights at the start of their career who need to be able to experiment in a safe environment without the pressures of a long run in a large theatre. Housed in the 62-seat Black Box Theatre in the Harold and Miriam Steinberg Center for Theatre, *Roundabout Underground* is a way to provide this nurturing environment with the full support of Roundabout, one of the nation's largest not-for-profit theatres. To allow younger audiences to be able to afford to see the work of these new writers, tickets for *Roundabout Underground* productions are only \$20 each.

Speech & Debate was a magnificent way to start this new program. Through astute direction by Jason Moore (*Avenue Q*, *Shrek*) and a wonderful design team, the Black Box Theatre was transformed into a working high school classroom in Salem, Oregon. A talented cast—Sarah Steele, Gideon Glick, Jason Fuchs, and Susan Blackwell—brought the outspoken characters hilariously to life. Critics and audiences responded enthusiastically and, after three extensions, the initial two-month run turned into five.

In addition to serving new artists and new audiences, *Roundabout Underground* embodies Roundabout's not-for-profit mission in an essential way: it doesn't make a profit. In fact, because of its unique combination of a small theatre and a very low ticket price, *Roundabout Underground* by design loses over \$200,000 per production. Luckily, theatre "angels" stepped in to secure the future of the program. Jodi and Dan Glucksman, Roundabout donors with a special interest in new plays, pledged \$500,000 to the program over five years to ensure that new playwrights will have a home at Roundabout. Stephen and Ruth Hendel and Laura S. Rodgers also contributed significant grants to allow this work to continue.

In the fall of 2008, *Roundabout Underground* opened the world premiere of *The Language of Trees* by Steven Levenson.



The Black Box Theatre



Gideon Glick, Susan Blackwell, director Jason Moore, Sarah Steele, Jason Fuchs, and playwright Stephen Karam of *Speech & Debate*

HAROLD & MIRIAM STEINBERG CENTER FOR THEATRE/BLACK BOX THEATRE



Speech and Debate

By Stephen Karam

October 5, 2007 through January 24, 2008

DIRECTOR: Jason Moore

SET DESIGN: Anna Louizos

COSTUME DESIGN: Heather Dunbar

LIGHTING DESIGN: Justin Townsend

SOUND DESIGN & PROJECTION DESIGN:
Brett Jarvis

ORIGINAL CAST: Susan Blackwell, Jason Fuchs,
Gideon Glick, Sarah Steele

OPENING NIGHT: October 29, 2007

PERFORMANCES: 159

ATTENDANCE: 8,533

Support for Roundabout Underground provided by Jodi and Daniel Glucksman, Stephen and Ruth Hendel, Andrew W. Mellon Foundation, Laura S. Rodgers/The Honorable Ann W. Brown & Donald A. Brown, Harold and Mimi Steinberg Charitable Trust.



Sarah Steele in *Speech & Debate*

NATIONAL TOUR



Richard Thomas, T. Scott Cunningham, Todd Cerveris, Randle Mell, and David Lively in *Twelve Angry Men* (from 2006–07 tour)

Twelve Angry Men

By Reginald Rose

DIRECTOR: Scott Ellis

SET DESIGN: Allen Moyer

COSTUME DESIGN: Michael Krass

LIGHTING DESIGN: Paul Palazzo

SOUND DESIGN: Brian Ronan

ORIGINAL COMPOSITIONS:

John Gromada

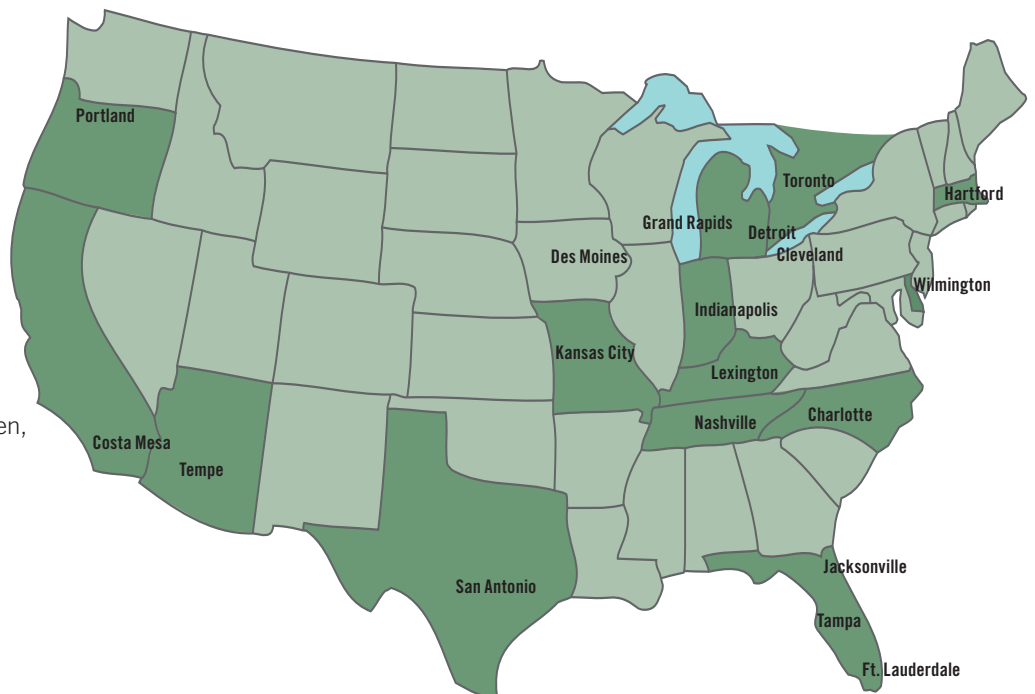
CAST: Richard Thomas, Mike Boland, Charles Borland, Todd Cerveris, Kevin Dobson, Mike DiSalvo, Julian Gamble, Thomas Gebbia, Jeffrey Hayenga, David Lively, Alan Mandell, James Green, Mark Morettini, Tony Ward

CITIES: 19

PERFORMANCES: 256

ATTENDANCE: 317,875

Major support for the national tour of Twelve Angry Men was generously provided by American Airlines, the official airline of Roundabout Theatre Company.



AWARDS & NOMINATIONS

THE 39 STEPS

TONY

Best Lighting Design of a Play–

Kevin Adams

Best Sound Design of a Play–

Mic Pool

Nomination for Best Play

Nomination for Best Director of a

Play–Maria Aitken

Nomination for Best Set Design of a

Play–Peter McKintosh

Nomination for Best Costume Design

of a Play–Peter McKintosh

DRAMA DESK

Outstanding Lighting Design–

Kevin Adams

Unique Theatrical Experience

Nomination for Outstanding Sound

Design–Mic Pool

OUTER CRITICS CIRCLE

Nomination for Outstanding

New Broadway Play

Nomination for Outstanding Director

of a Play–Maria Aitkin

Nomination for Outstanding Lighting

Design–Kevin Adams

SUNDAY IN THE PARK WITH GEORGE

TONY

Nomination for Best Revival of
a Musical

Nomination for Best Director of

a Musical–Sam Buntrock

Nomination for Best Actor in a

Musical–Daniel Evans

Nomination for Best Actress in

a Musical–Jenna Russell

Nomination for Best Orchestrations–

Jason Carr

Nomination for Best Set Design of a

Musical–David Farley &

Timothy Bird

Nomination for Best Costume Design

of a Musical–David Farley

Nomination for Best Lighting Design

for a Musical–Ken Billington

Nomination for Best Sound Design for

a Musical–Sebastian Frost

DRAMA DESK

Outstanding Orchestrations–

Jason Carr

Outstanding Projections and Video

Design–Timothy Bird & The

KnifeEdge Creative Network

Nomination for Outstanding Revival

of a Musical

Nomination for Outstanding Actor in

a Musical–Daniel Evans

Nomination for Outstanding Actress

in a Musical–Jenna Russell

Nomination for Outstanding Director

of a Musical–Sam Buntrock

Nomination for Outstanding Lighting

Design–Ken Billington

OUTER CRITICS CIRCLE

Outstanding Set Design–David Farley

& Timothy Bird

Outstanding Lighting Design–

Ken Billington

Nomination for Outstanding Revival

of a Musical

Nomination for Outstanding Actor in

a Musical–Daniel Evans

Nomination for Outstanding Costume

Design–David Farley

LES LIAISONS DANGEREUSES

TONY

Best Costume Design of a Play–

Katrina Lindsay

Nomination for Best Revival of a Play

Nomination for Best Actor in a Play–

Ben Daniels

Nomination for Best Set Design in a

Play–Scott Pask

Nomination for Best Lighting Design

of a Play–Donald Holder

DRAMA DESK

Outstanding Set Design of a Play–

Scott Pask

Outstanding Costume Design–

Katrina Lindsay

OUTER CRITICS CIRCLE

Outstanding Costume Design–

Katrina Lindsay

Nomination for Outstanding Revival

of a Play

Nomination for Outstanding Actor in

a Play–Ben Daniels

Nomination for Outstanding Actress

in a Play–Laura Linney

Nomination for Outstanding Featured

Actress in a Play–Jessica Collins &

Siân Phillips

Nomination for Outstanding Director

of a Play–Rufus Norris

Nomination for Outstanding Set

Design–Scott Pask

Nomination for Outstanding Lighting

Design–Donald Holder

BEYOND GLORY

DRAMA DESK

Nomination for Outstanding Solo

Performance–Stephen Lang

OUTER CRITICS CIRCLE

Nomination for Outstanding Solo

Performance–Stephen Lang

110 IN THE SHADE

ACTORS' EQUITY ASSOCIATION

Extraordinary Excellence in Diversity

on Broadway

TWELVE ANGRY MEN

WILDE AWARDS

Best Professional Touring Production

EDUCATION

In-School Programs

From our school-based programs, to our after-school initiatives, to our career development program, Education @ Roundabout encourages students to strive for the outer reaches of their talents and possibilities. In every partnership that we undertake we tailor our work to meet the specific needs of each school in order to help students acquire the skills needed to be productive, engaged citizens. We continue to strengthen our connection with New York City public schools by offering diverse opportunities for principals, teachers, and their students to get involved in Education @ Roundabout. Whether a classroom partnership or a more intensive school-wide partnership, teachers and schools can choose among a variety of curriculum models to address their particular goals for student learning. These residency programs—which can be customized to each school's needs—include Page to Stage, Perspectives, Curriculum Connections, Beyond Boundaries, and Producing Partners.

Throughout each program, theatre is used as a tool for learning to improve literacy skills, explore academic themes in depth, make connections across subject areas, and build organization and leadership abilities.



Student Production Workshop students in *The Truth That Lies Within*



Students from SPW get pointers from Tony® Award-winning director Joe Mantello as they prepare for their spring production of Tony Kushner's *Angels in America*

After-School Programs

Roundabout's after-school programs provide students with hands-on theatre-making experiences that develop community and celebrate creative intuition. During the 2007–08 school year, our first group of senior after-school company members graduated from high school. This is a great accomplishment, considering that many of these students were close to dropping out of school when they first entered our programs. More than 70% of these original company members are attending college this fall. In comparison, according to numbers released by the New York State Department of Education in 2007, the citywide high school graduation rate was 52%.

Our two programs, VOICES and Student Production Workshop (SPW) reached 35 students last year. VOICES offers conservatory-style training that allows students to develop and articulate a sense of themselves as artists, culminating in a fall production of student-written work and a spring showcase of classic work chosen by the participants. SPW focuses on re-engaging “at-risk” students in their education by allowing them to create their own student-run theatre company.



Roundabout teaching artist Jim Jack demonstrates the use of spectacle to Theatrical Training Institute participants

Professional Development

One of the year's highlights is the Theatrical Training Institute (TTI) that takes place each August. This four-day workshop offers classroom teachers an intensive introduction to the Theatrical Teaching Framework. Founded on the principle that every great lesson has the elements of a great play, the framework utilizes the basic theatrical elements of theme, plot, spectacle, and character and establishes parallels to educational components such as academic content, lesson plan structure, classroom setting, and teaching demeanor.

Over these four days, classroom teachers and Roundabout teaching artists use this framework to stimulate intellect, creativity, and artistry by developing lesson plans in a collaborative and supportive environment. The week included workshops from professional Roundabout artists, attendance at Roundabout's production of *The Marriage of Bette and Boo*, and a post-show discussion with the lead actor, Christopher Even Welch. Bronx Theatre High School teacher Paul Estrada defined the impact of the Institute, saying, "[It was] probably the most powerful experience I've had as a teacher. It opened up possibilities."

Career Development

An important part of our education mission is to create a new generation of arts administrators for the future of the not-for-profit arts community. Through our Career Development program, Roundabout's internships offer students an understanding of the artistic, administrative, and technical aspects of running a theatre company. Approximately 35 students participate in Roundabout internships each year



Interns undergraduate Kate Cherichello, master's candidate Michael Crowley, and high school student Steven Foster, Jr.

in the Management, Production, Development, Marketing, Ticket Services, Business, and Education departments.

Interns play a critical role at Roundabout: they participate fully in daily functions of the office while attending weekly meetings with Roundabout department heads, who offer career guidance and answer students' questions. The program reaches students at all educational levels from high school to graduate school. Over the years, Roundabout interns have gone on to become successful arts administrators at such organizations as Second Stage Theatre, Jazz at Lincoln Center, The Alliance Theatre in Atlanta, and The John F. Kennedy Center for Performing Arts in Washington, D.C.

The following New York City public high schools participated in Roundabout's education programs during the 2007–08 season:

Bronx Theatre High School	SWP
Riverdale Kingsbridge Academy MS/HS 141	CP
Brooklyn School for Music and Theatre	SWP
Leon Goldstein High School	CP
William H. Maxwell High School	CP
Columbia Preparatory High School	TA
High School of Art and Design	TA
High School of Fashion Industries	CP
Jacqueline Kennedy Onassis High School	SWP
LaGuardia High School of Arts	TA
Manhattan Bridges High School	CP
Repertory Company High School for Theatre Arts	SWP
Satellite Academy High School	TA
Harvey Milk High School	TA
Tito Puente Education Complex	SWP
Washington Irving High School	CP
Flushing High School	CP
IS 25	CP
IS 230	CP
IS 237 (Rachel L. Carson School)	SWP
Virgil I. Grissom Junior High School	TA
Newcomers High School	TA
Robert F. Kennedy High School	CP
Curtis High School	CP

PROGRAM KEY

CP = Classroom Partnerships
 SWP = School-wide Partnerships
 TA = Theatre Access

PROGRAM	STUDENTS	TEACHERS	SCHOOLS	CLASSROOMS	ARTIST SESSIONS
Theatre Access	2,638	90	45	88	179
School-Based Programs	2,929	116	17	147	2,132
Professional Development	–	87	19	–	2,518
After-School Programs	43	19	9	–	676
Career Development	34	19	27	–	33
Totals	5,644	312	117	235	5,538

BROADWAY KARAOKE

THIS YEAR saw the introduction of a new event featuring the next generation of Broadway stars—uncensored and unrehearsed!—at *Broadway Karaoke*. On May 5, 2008, 250 young NYC professionals mixed and mingled with some of Broadway's brightest stars at Arena, a state-of-the-art nightclub in Times Square. An evening of cocktails and hors d'oeuvres was followed by performances by some of the hottest young talent on Broadway, who took the stage to sing pop favorites. The line-up included Tony Award® winner John Lloyd Young (*Jersey Boys*), Tony Award® nominee Kerry Butler (*Xanadu*), and Nellie McKay (*The Threepenny Opera*), plus stars from *Spring Awakening*, *Avenue Q*, and more. All proceeds benefitted Education @ Roundabout. A highlight of the evening was a performance by two of our students who delivered an unforgettable duet from *Rent*. The evening was a true celebration of the future of Broadway!



Broadway Karaoke's host Seth Rudetsky



Student Tehillah Smith from Repertory Company High School for Theatre Arts



Nellie McKay from *The Threepenny Opera*



Kerry "Kerry-oke" Butler from *Xanadu*



Ben Walker from *Les Liaisons Dangereuses*



Skylar Astin from *Spring Awakening*

SPRING GALA 2008

Feeling Groovy

ROUNDABOUT THEATRE COMPANY opened its doors in 1965, a time that also marked the dawning of a brand-new age. While Roundabout revitalized classic plays on stage, pop music and fashion were being redefined. At our Spring Gala on April 8, 2008, over 500 Board members, donors, patrons, and artists of Roundabout celebrated this dynamic time with a unique evening called *Feeling Groovy: Pop Songs of the 60s*. To honor this extraordinary decade, Tony Award® winner Kathleen Marshall created a one-night-only musical celebration featuring Broadway's hottest stars: Kelli O'Hara, Alan Cumming, Rosie Perez, and Brian D'Arcy James singing the unforgettable music of the 1960s. With inspired leadership by Gala Chairs Lois Robbins and Andrew Zaro, the event raised a record \$1.5 million for Roundabout's Musical Theatre Fund. These important funds will help ensure that Roundabout's rich musical productions such as *Nine*, *Assassins*, *The Pajama Game*, *110 in the Shade*, this season's *Sunday in the Park with George*, and *Pal Joey* can be enjoyed in exciting interpretations for new generations of theatregoers to experience.



Stars of *Sunday in the Park with George*
Jenna Russell and Daniel Evans



Capaithia Jenkins singing *Until You Come Back For Me*



Brooks Ashmanskas and Kevin Chamberlin are
Soul Men



Roundabout's Beach Boys Medley



Katie Finneran, Rosie Perez, and Kelli O'Hara



Brian D'Arcy James and Company

WORKSHOPS AND READINGS

THROUGH A SERIES of **Artistic Workshops** and **Friends of Roundabout Playreadings**, We are committed to cultivating new plays and musicals as well as re-working classics. Artistic Workshops provide an intensive forum in which playwrights, composers, lyricists, and directors can test works in front of a small group of their peers. Friends Playreadings provide these artists with the opportunity to have their work performed in front of an enthusiastic audience and give Roundabout donors the unique experience of seeing theatre in the early stages of the development process. The following Artistic Workshops and Friends Playreadings were produced during Roundabout's 2007–08 season.

FRIENDS OF ROUNDABOUT Playreadings

THE HEART IS A LONELY HUNTER

By Carson McCullers, adapted for the stage by Rebecca Gilman
November 12, 2007
DIRECTOR: Doug Hughes
CAST: Jimonn Cole, David de Vries, Adam Green, Ron Cephas Jones, David Patrick Kelly, Randall Newsome, Alison Pill, Roslyn Ruff, John Sierros, Henry Stram, Michael Warner

MISTER ROBERTS

By Thomas Heggen and Joshua Logan
January 28, 2008
DIRECTOR: Scott Ellis
CAST: Michael Bakkensen, Alec Baldwin, Michael Carlsen, Chris Chalk, John Dossett, Katie Finneran, Hunter Foster, Darren Goldstein, Robert Sean Leonard, Cobey Mandarino, Timothy McGeever, Matte Osian, Daniel Stewart Sherman, Richard Short, Clarke Thorell, Brad Heikes

BELL, BOOK AND CANDLE

By John van Druten
April 14, 2008
DIRECTOR: John Rando
CAST: Katie Finneran, James Frain, Carol Kane, Carson Elrod, Jefferson Mays, Nadia Wahhab

THE UNDERSTUDY

By Theresa Rebeck
June 9, 2008
DIRECTOR: Scott Ellis
CAST: Bradley Cooper, Reg Rogers, Julie White, Neal Bledsoe

Artistic Readings and Workshops

THE FACULTY ROOM

By Bridget Carpenter
September 10, 2007
DIRECTOR: Anne Kauffman
CAST: Rosemarie Dewitt, Paul Sparks, Greg McFadden, David Costabile, Paul O'Brien, Connor Paolo, Nadia Wahhab

CRIMES OF THE HEART

By Beth Henley
September 27, 2007
DIRECTOR: Kathleen Turner
CAST: Patch Darragh, Jennifer Dundas, Sarah Paulson, Lily Rabe, Jessica Stone, Chandler Williams, Nadia Wahhab

HUMAN VOICES

By Sarah Treem
October 15, 2007
DIRECTOR: Pam MacKinnon
CAST: Alec Beard, Marin Ireland, Bill Irwin, Gillian Jacobs, Quinn Mattfeld

THE TIN PAN ALLEY RAG

By Mark Saltzman
Music & Lyrics by Irving Berlin and Scott Joplin
November 16–17, 2007
DIRECTOR & MUSICAL STAGING: Casey Nicholaw
MUSIC DIRECTOR: Phil Reno
CAST: Peter Benson, Christian Borle, Rosa Curry, Mara Davi, Matt Loehr, Kenya Unique Massey, JC Montgomery, Charles Parnell, Idara Victor, NaTasha Yvette Williams, Tommar Wilson, Eric Jordan Young

THE FACULTY ROOM

By Bridget Carpenter
January 18, 2008
DIRECTOR: Anne Kauffman
CAST: Marin Ireland, Paul Sparks, Gibson Frazier, Frank Wood, Damien Baldet, Paul Iacono, JT Arbogast

THE LANGUAGE OF TREES

By Steven Levenson
January 24, 2008
DIRECTOR: Alex Timbers
CAST: Heidi Schreck, Jason Butler Harner, Jon Norman Schneider, Jayne Houdyshell, Damian Baldet, Brad Heikes

MARGARET AND CRAIG

By Dave Solomon, based on the work of Margaret Gibson and Craig Russell
March 4, 2008
DIRECTOR: Scott Ellis
CAST: Mario Cantone, Veanne Cox, Quinn Mattfeld

HIGH SPIRITS

Music, Lyrics & Book by Hugh Martin and Timothy Gray
Based on BLITHE SPIRIT, by Noel Coward
Adapted by Lonny Price
March 7, 2008
DIRECTOR: Lonny Price
MUSICAL DIRECTOR: Paul Gemignani
CAST: Victoria Clark, John Curless, Tom Hewitt, Patricia Kalember, Megan Lawrence, Andrea Martin, Megan Mullally

THE RISE AND FALL OF ANNIE HALL

By Sam Forman
Lyrics by Sam Forman
Music by Gabriel Kahane
March 14, 2008
DIRECTOR: Alex Timbers
CAST: Jeremy Strong, Michael Braun, Katherine Waterston, Kristen Connolly, Austin Lysy, Myeah Hogan

A MAN FOR ALL SEASONS

By Robert Bolt
April 4, 2008
DIRECTOR: Doug Huges
CAST: Frank Langella, Daniel Stewart Sherman, Jeremy Strong, David Rasche, Dana Ivey, Maggie Siff, George Morfogen, Tim Blake Nelson, Robert Sella, Graham Hamilton, Stephen Kunken, Shuler Hensley, Patricia Hodges, Munson Hicks, Robert Berliner

THE TIME OF YOUR LIFE

By William Saroyan
April 25, 2008
DIRECTOR: Tina Landau
CAST: Brian D'Addario, David Patrick

Kelly, Skylar Astin, Matthew Broderick, Yasen Peyankov, Christopher Evan Welch, Charlotte Parry, Jeremy Strong, Hunter Foster, Lafayette Harris, Jr., Heather Simms, Lawrence MacGowan, Yusef Bulos, Jessica Molaskey, Guy Van Swearingen, Christopher Innvar, Howard Witt, Ana Sferruzza, Patricia Hodges, Tony Carlin, Matthieu Cornillon

PAPER ARMOR

By Eisa Davis
May 2, 2008
DIRECTOR: Robert O'Hara
CAST: De'Adre Aziza, Lynda Gravatt, Andre Holland, Angela Lewis, Sean Phillips

MOURNING BECOMES ELECTRA

By Eugene O'Neill
May 19–22, 2008
DIRECTOR: Scott Elliott
CAST: John Bedford Lloyd, Jennifer Jason Leigh, Maggie Gyllenhaal, Darren Goldstein, Benjamin Walker, Sarah Drew, John Cullum, John Wodja, Jennifer Harmon, Catherine Curtin, Andrew Garfield, MacIntyre Dixon, Edward James Hyland, David Patrick Kelly, Mycah Hogan

DEATH TAKES A HOLIDAY

Book by Peter Stone & Thomas Meehan
Music & Lyrics by Maury Yeston
May 30, 2008
DIRECTOR: Doug Hughes
MUSIC DIRECTOR: Kevin Stites
CAST: John Bolton, Matt Cavanaugh, Sara Chase, Erin Davie, Taina Elg, David Garrison, Joy Hermalyn, Jay Jaski, Simon Jones, Aaron Lazar, Mary Elizabeth Mastrantonio, Brian Stokes Mitchell, Brynn O'Malley, Laura Osnes, Michael Warner

THE LANGUAGE ARCHIVE

By Julia Cho
July 7, 2008
CAST: Joel de la Fuente, Eisa Davis, Michi Barall, Mia Katigbak, Yusef Bulos, Nadia Wahhab

SIDE SHOW

Book and Lyrics by Bill Russell
June 13, 2008
Music by Henry Krieger
DIRECTOR: Bill Condon
MUSIC DIRECTOR: Sam Davis
CAST: Linda Balgord, Terry Burrell, Erin Davie, Anderson Davis, Toni DiBuono, Christy Faber, Joshua Henry, Aaron Lazar, Daniel Levine, Deven May, Jefferson

Mays, Raymond McLeod, Julie Reiber, Bobby Steggert, David Turner, Andrew Varela, Betsy Wolfe

AGNES OF GOD

By John Pielmeier
July 14, 2008
DIRECTOR: Doug Hughes
CAST: Viola Davis, Lynn Redgrave, Anne Hathaway, Stephanie Bratnik

THE CHALK GARDEN

By Enid Bagnold
July 23, 2008
DIRECTOR: Nicholas Martin
CAST: Lynn Redgrave, David Aaron Baker, Sandra Shipley, Holley Fain, Patricia Conolly, Marian Seldes, Jennifer Van Dyck, Fritz Weaver, Matthieu Cornillon

THE LANGUAGE OF TREES

By Steven Levenson
August 5, 2008
DIRECTOR: Alex Timbers
CAST: Katie Finneran, Shirley Knight, Gio Perez, Ben Shenkman, Michael Warner, Mike DiSalvo



Left to right: Cobey Mandarino, Richard Short, Michael Carlsen, and Robert Sean Leonard in the reading of *Mister Roberts*

CAPITAL CAMPAIGN

In the fall of 2004, Roundabout stood at a crossroads. After a decade of unprecedented growth, we had secured three permanent homes both on Broadway and off in which to stage nine first-class productions each season. We were attracting larger audiences, hosting the world's finest artists, and producing a thriving education program. However, production expenses continued to outpace ticket income. The cornerstone of our mission is the subscription model, which translates to keeping ticket prices affordable to our subscribers. For our growth as a company to continue, we needed to solidify our long-term financial footing so we could sustain our artistic programming for years to come.

Thus, we launched a four-year, \$32-million capital fundraising initiative called *Building Partnerships for Artistic Excellence: A Campaign for Roundabout Theatre Company*. While our past two capital campaigns had been in support of attaining brand-new theatres, this campaign was perhaps less splashy yet no less necessary, with three clear initiatives

that focused on Roundabout's long-term financial health:

- Renovating Studio 54 and The Harold and Miriam Steinberg Center for Theatre to restore these two dilapidated theatres for New York City audiences and artists. Both now take their place as first-class, state-of-the-art theatres.
- Creating the Production Fund to support work on our stages, allowing us to fulfill our core mission of producing large-scale classic plays and musical revivals alongside new plays.
- Establishing an endowment to build Roundabout's long-term financial security.

Over the course of four years, thanks to the dedication of Capital Campaign Chair Mary Solomon, Board Chairman Tom Tuft, and the Campaign Steering Committee, along with the incredible support of the entire Board of Directors, we are pleased to announce that we achieved the goal of this



The Chairman's Circle Lounge at Studio 54 designed by White Webb, LLC

ambitious campaign. We could not have done it without the support of so many who gave so generously. We were especially honored that many of our artists contributed to the *Todd Haimés Fund for Artistic Initiatives*. Established by then-Board Chairman Steven Goldstone to celebrate Todd's 25th anniversary with Roundabout, it ensures the Artistic Director can make creative choices which might normally be beyond the reach of our operating budget. We also received significant capital support from two of our longtime and most significant partners, the Kaplen Foundation and The Harold and Mimi Steinberg Charitable Trust.

We are particularly grateful to The Kresge Foundation, which ignited our fundraising efforts over the past year with a coveted Challenge Grant. Kresge doesn't simply give money away; instead, it challenges the organizations to which it donates to develop a clear and concise plan for their capital campaigns. Because of its exacting nature, Kresge's award of the Challenge Grant represents a highly prized "seal of

approval" on both the organization and its campaign. Kresge challenged us in June 2007 to raise \$5 million toward the campaign over the next year; if successful, it would award us a \$1 million grant. The Kresge Challenge was critical to focusing our efforts to reach our \$32 million goal. Thanks to our strong donor and subscriber base, we met the Foundation's challenge in July 2008.

As we end the capital campaign, we also look to the future. Although our endowment is beginning to build, securing our future will not be quick or easy. Yet the hundreds of thousands of people who experience the power of live theatre at Roundabout each year can attest to the need for this tradition to continue. So while one chapter in Roundabout's history has ended, a new one—focused on fully realizing a long and stable financial and artistic future—has just begun.



In February, a special panel of Roundabout artists convened at Studio 54 to discuss "Pairing Artists with the Play" and formally launch the "Name a Seat at Studio 54" initiative of the Capital Campaign. The participants were (L to R): director Scott Ellis, actor Philip Bosco, actor Cynthia Nixon, Campaign Chair and Board member Mary Solomon, director Doug Hughes, director/choreographer Kathleen Marshall, actor Alan Cumming, and Artistic Director Todd Haimés



Claire Danes and Jefferson Mays in *Pygmalion*

OUR CAPITAL CAMPAIGN SUPPORTERS

We are proud to recognize the generosity of the following donors who have made leadership-level commitments toward Building Partnerships for Artistic Excellence: A Campaign for Roundabout Theatre Company:

\$2,000,000

The City of New York
Mayor Michael R. Bloomberg
Council of the City of New York
Speaker Christine Quinn
The Kaplen Foundation
The Harold and Mimi Steinberg Charitable Trust

The Blanche and Irving Laurie Foundation
Peter and Leni May
Office of the Manhattan Borough President
Mary and David Solomon

\$100,000

Anonymous
Harrison and Leslie Bains
Booth Ferris Foundation
Michael Chepiga and Pamela Rogers Chepiga
Lori and Edward Forstein
Bill and Suzanne Giove
Patricia and Bernard Goldstein
Hayes Family Fund at The New York Community Trust
Robert and Soledad Hurst
Kurt Leopold
David and Anita Massengill
Jeffrey and Wendy Maurer
Laura S. Rodgers/The Honorable Ann W. Brown & Donald A. Brown
Donna and Elliott Slade
Patricia Stockhausen and Michael Emmerman
Barbara and David Thomas
Williams Real Estate
Chris and Lonna Yegen

\$50,000

Maureen Bluedorn
Assembly Member Richard N. Gottfried
Todd Haimes
Ruth and Stephen Hendel
Helen Lee Henderson
Doctors Andrew and Irma Hilton
Robert & Sally Huxley and Bill Huxley
Thomas J. Kane
New York State Council on the Arts
James and Carla O'Rorke
Jill and Mark Rachesky
Daniel Scapin and Janet Kane Scapin
Adolph and Ruth Schnurmacher Foundation

\$1,000,000

Elizabeth and Steven Goldstone
The Kresge Foundation
Norma S. Langworthy
Gilda and John P. McGarry, Jr.
The Andrew W. Mellon Foundation
Diane and Tom Tuft

\$250,000

James J. Burke, Jr.
Sam and Beth Chapin
Mary Cirillo-Goldberg and Jay N. Goldberg
Mike and Pilar de Graffenried
Cory and Bob Donnalley
Leah and Ed Frankel
Cathy and Marc Lasry
Tom Kempner and Katheryn Patterson
Carol Mitchell
The Honorable George E. Pataki
The Laura Pels Foundation
Lois Robbins and Andrew Zaro
Former Assemblyman Steven Sanders
Steven A. Sanders
Chip Seelig

\$500,000

Stephen and Mary Birch Foundation
Beth and Ravenel Curry
Doris Duke Charitable Foundation
Jodi and Daniel Glucksman
Perry and Marty Granoff

We also sincerely thank the hundreds of donors who made gifts to the Studio 54 Seat Campaign who regretfully cannot be listed due to space limitations.

Todd Haimes Fund for Artistic Excellence

Board member and former Chairman Steven Goldstone and his wife Liz established this special endowment fund in honor of Artistic Director Todd Haimes's 25th Anniversary with the Theatre. The fund supports the ongoing costs of producing exceptional classic revivals, musicals, and new works on our stages. We extend our thanks to our lead donors to this endowment fund:

Jane Alexander and Ed Sherin
Polly Bergen
Walter Bobbie
Jill Clayburgh
Blythe Danner
Scott Ellis
Elizabeth and Steven Goldstone

Robyn Goodman
Charles and Elissa Grodin
Doug Hughes
Bill Irwin and Martha Roth
Cherry Jones
Tom Kempner and Katheryn Patterson

Julia C. Levy
Joe Mantello
Kathleen Marshall
Mary Stuart Masterson
Mary McCormack
Lynn Redgrave
Natasha Richardson and Liam Neeson

Ron and Iva Rifkin
Patricia Stockhausen and Mike Emmerman
Richard Thomas
Yolanda R. Turocy
Harold Wolpert



J.T. Rogers with Joan and Michael Steinberg



Board member Carol Mitchell with *Pygmalion's* Jefferson Mays



Leadership Council member Bill Giove with wife, Suzanne



Board member Laura Pels with Artistic Director Todd Haimes

OUR SUPPORTERS

FOUNDERS

American Airlines, Inc.
 American Express Company
 Carnegie Corporation of New York
 Council of the City of New York
 The Kaplen Foundation
 The Blanche and Irving Laurie Foundation
 The Leon Levy Foundation
 The Andrew W. Mellon Foundation
 New York City Department of Cultural Affairs
 New York State Council on the Arts
 The Shubert Foundation, Inc.
 The Harold and Mimi Steinberg Charitable Trust
 Diane and Tom Tuft

SUSTAINERS

Altria Group, Inc.
 Areté Foundation
 Bank of America
 Continuity Worldwide, LLC
 Ernst & Young LLP
 Steven and Liz Goldstone
 JPMorgan Chase
 Cathy and Marc Lasry
 Peter and Leni May
 New Visions for Public Schools
 The Laura Pels Foundation
 The Picower Foundation
 Chip Seelig
 Mary and David Solomon
 The Starr Foundation
 State of New York, Department of State

PRODUCERS

Rose M. Badgeley
 Residuary Charitable Trust
 Harrison and Leslie Bains
 James J. Burke and Philippa Whalen
 Mr. and Mrs. Samuel R. Chapin

Ms. Mary Cirillo-Goldberg and Mr. Jay N. Goldberg
 Citi Foundation
 Eleanor Naylor Dana Charitable Trust
 Mike and Pilar de Graffenried
 Cory and Bob Donnalley
 Irene Duell
 The Durst Family
 Jane Goldman and Benjamin Lewis
 Goldman, Sachs & Co.
 Barbara Goldsmith Foundation/Barbara Goldsmith
 Patricia and Bernard Goldstein
 John and Kiendl Gordon
 Perry and Marty Granoff
 Jeanne and Tom Hagerty
 Maureen A. Hayes
 The Heckscher Foundation for Children
 F. M. Kirby Foundation, Inc.

Norma S. Langworthy
 Kurt F. Leopold
 David and Anita Massengill
 Joe Masteroff
 Gilda and John P. McGarry Jr.
 Akiko Mikumo
 Carol Mitchell
 National Endowment for the Arts
 New York State Office of Parks, Recreation, and Historic Preservation
 Newman's Own Foundation
 Henry Nias Foundation, Inc.
 Eliot and Wilson Nolen
 Alice M. Perlmutter
 Jill Rachesky
 The Fan Fox and Leslie R. Samuels Foundation
 Steven A. Sanders
 Oscar Schafer
 The Peter Jay Sharp Foundation
 Donna and Elliot Slade

Marcia Dunn and Jonathan Sobel
 Barbara Schaps Thomas and David M. Thomas
 The Westin New York
 Chris and Lonna Yegen
 Andrew Zaro and Lois Robbins Zaro

DIRECTORS

Margot Adams
 Adrian and Jessie Archbold Charitable Trust
 Mr. and Mrs. Robert Arnow
 The Avellino Family Foundation, Inc.
 The Gladys Krieble Delmas Foundation
 Diageo Chateau and Estates Inc.
 Esurance, Inc.
 Ford Motor Company
 Jim Grapka and Dan Navarro
 Richard and Mica Hadar Foundation
 Bill Huxley
 Sally and Robert Huxley
 The Joelson Foundation
 Richard I. Kandel
 Bruce and Suzie Kovner
 Christine LaSala and Ellen Lipschitz
 Merrill Lynch & Co. Foundation, Inc.
 Kenneth and Ginny Murphy
 The New York Times Company Foundation
 Henna Ong and Peter D. Lawrence
 Benjamin M. Rosen
 Rudin Foundation, Inc.
 Daniel and Janet Scapin
 The Adolph and Ruth Schnurmacher Foundation
 Ruth and Julian Schroeder
 Beryl Snyder
 Bob and Rosie Stubbs
 Yolanda R. Turocy
 Linda and Daniel Waintrup

The Harold Wetterberg Foundation
 Mark and Dorinda Winkelman
 Shelby White and the Leon Levy Foundation
 Anonymous

LEADERS

The Theodore H. Barth Foundation
 Roger Berlind
 Ann L. Bernstein
 John and Penelope Biggs
 Laura and Lloyd Blankfein
 Louise and Ardè Bulova Fund
 Karen Calby and Douglas Calby
 Patricia Cembalest
 Chief Executives Organization
 Michael Chepiga and Pamela Rogers Chepiga
 CIT
 Douglas S. Cramer
 Foundation
 Barbara Bell Cumming
 Foundation
 Ravenel and Beth Curry
 Lynn Davis
 Scott M. Delman
 Linda D'Onofrio
 Michael and Linda Donovan
 Durst Organization
 Basil and Georgina Dzubak
 The M. N. Emmerman and P.A. Stockhausen
 Foundation
 David Ford
 Christopher M. Formant
 Lori and Edward Forstein
 Glenn Fuhrman
 Mr. and Mrs. Ned I. Gerstman
 Irving and Yetta Geszel
 Bill and Suzanne Giove
 Jodi and Daniel Glucksman
 Goldman Sachs Gives
 (The R. Martin Chavez Family Foundation)

Joan Granlund
 The Mark Haas Foundation
 Barbara McIntyre Hack
 Monique and Burton K. Haimes
 Russel T. Hamilton
 Hangar One Vodka
 Francena T. Harrison
 Foundation Trust
 Eileen Kaminsky
 New York State Senator
 Carl Kruger
 Trudy K. Lampert
 Lehman Brothers
 Michael Lynch and Susan Baker Foundation
 M.A.C. Cosmetics
 Mellam Family Foundation
 Murray L. Nathan
 Elizabeth Olmsted and Randall Kau
 James and Carla O'Rorke
 Kathryn C. Patterson
 Herbert H. Plever
 Laura S. Rodgers/The Honorable Ann W. Brown & Donald A. Brown
 Jeanette and Jonathan Rosen
 Petros and Marina Sabatacakis Foundation
 Ann and Tom Scheuer
 Dr. and Mrs. Thomas P. Sculco
 Skadden, Arps, Slate, Meagher & Flom LLP
 Martin and Toni Sosnoff
 Time Out New York
 Michael Tuch Foundation
 Beth Uffner
 Barry C. Waldorf
 Suzanne C. & Jeffrey C. Walker
 The Walt Disney Company
 Mr. and Mrs. Alan G. Weiler
 Max Weintraub
 Nina and Gary Wexler
 Mr. Francis H. Williams
 Allen Jay Wolpert and Marie Battaglino
 Patricia S. Wolpert
 Donald and Barbara Zucker

Anonymous

BENEFACTORS

Stanley and Barbara Arkin
 Dr. Bernard I. Belasco
 Elizabeth B. Blau
 Robert Brenner
 Mr. and Mrs. William J. Burke
 The Center for Arts Education
 Simona and Jerome A. Chazen
 Michael T. Cohen and Arielle Hart
 Con Edison
 Al and Kathy Diamant
 Edmund C. and Terry D. Duffy
 Leah and Ed Frankel
 Paula Freedman and Kulbir Arora
 Roy and Frieda Furman
 Wilma and Arthur Gelfand
 Fredric and Myrna Gershon
 Melissa M. Gibbs
 Eric Hadar
 The Harkness Foundation for Dance
 Diana and Larry Henriques
 Herman Goldman
 Foundation
 Thomas and Susan Hertz
 Alan and Marilyn Korest
 Catherine Ladnier and J.M. Robinson
 Sheila and Bill Lambert
 Randall Liken and Stephen Prescott
 Svoboda
 Liz Claiborne Foundation
 Jodi Lustig
 Martin Maleska and Julie McGee
 Mark J. Manoff
 Nina Matis
 The McGraw-Hill Companies
 Norman and Sharon Michaels
 Peter and Elsbeth Moller
 Kathryn Myers



Board member Chuck Imhof and wife, Maria



Director Emeritus Bob Donnalley with wife, Cory, and Judy Tisdale



Chairman's Circle members Janet and Dan Scapin



Kurt Leopold and his daughter, Michaela

New York State Assembly
Manhattan Delegation
The George A. Ohl, Jr. Trust
Olympus Theatricals, LLC
Charles and Charlotte
Peck
Neila Radin
Ira M. Resnick Foundation,
Inc.
Karen and Charles
Schader
John E. Schowalter, M.D.
New York State Senator
José M. Serrano
Martha E. Sherman
Stephanie and Fred
Shuman
Barbara Slifka
Margaret Smith
James and Mary Dale
Spach
Loren Stahl
Ted and Vada Stanley
Janis and Jeffrey Strauss
Rebecca Sullivan and
Stephen Greenwald
Sweet Concessions
Tishman Speyer Properties
Union Square Hospitality
Group
Judith M. Vale
Deborah and Thomas
Wallace
John and Denise Ward
A. J. Weber
Robert and Susan Wilder
The Williams Capital
Group
Anonymous

PARTNERS

Judith Adel and Robert
Arnold
Alyson Adler and William
Green
The Aeroflex Foundation
Mariette Allen
Allied Partners Inc.
Clyde and Summer
Anderson
John and Cathy Andrus
John Archibald and James
Costa
Jody and John Arnhold
Martin Atkin
Axe-Houghton Foundation
New York State Senator

Michael A. L. Balboni
Stephen and Kathi Bard
Law Offices of Mark J.
Belnick, LLC
Genie and Bob Birch
Books of Wonder
The Brewer Family
Stanley and Josephine
Brenzoff
John and Linda Chamard
Jerome and Pamela
Charnizon
Mrs. Michael J. Chasanoff
Cathy Chernoff
The Chisholm Foundation
Baukje and Noel Cohen
Jill F. and Irwin B. Cohen
Isabel E. Collins
Thomas and Sharon
Collins
Corgan Associates
Architects
Sheila Crowell
Thomas J. Doherty
The Drama Book Shop,
Inc.
New York State Senator
Thomas Duane
Dr. and Mrs. Christopher
Edelmann
Roger and Carol Einiger
Bonnie and Cliff Eisler
Dr. Gregory Elder
Alice and Glenn Engel
Edward M. Eustace &
Emmy Betemit-Eustace
In memory of Susan
Fastow
Jeanne Donovan Fisher
Flute Champagne Bar
Austin and Gwen
Fragomen
Joele Frank and Laurence
Klurfield
Janet and Michael Fried
Mary Alison Friel
Manuel and Vivian Furer
Gammon Ragonesi
Associates
Mr. and Mrs. Michael
Gardner
Gloria Gelfand
Carolyn Gentile
Edda and James Gillen
Edith Ginsberg
Irene and Martin Ginsburg

Maya and Larry
Goldschmidt
Sam & Sandy Hagler
Gilbert Hahn and Barbara
Benezet
Havana Central
Mary Healy
Doctors Andrew and Irma
Hilton
Arlene and Leonard
Hochman
Mr. and Mrs. David Hogan
Pamela J. Hoiles
Judge and Mrs. Howard M.
Holtzmann
Bruce Horten
H. Brett Humphreys and
Samantha Merton
Hugh P. Jones
Greg Joseph
Joseph Family Charitable
Trust
Robert and Anna Kelly
Eugenia King
David and Anita Knechel
Alan and Gail Koss
C.L.C. Kramer Foundation,
Inc.
Carole and Ted Krumland
Nanette L. Laitman
Theresa Lang Foundation
Brian and Diane Laurenti
Diane Lederman and
Arthur Levin
Lester Taylor Family
Julia C. Levy
Imelda Liddiard
Mr. and Mrs. John L.
Lindsey
Diane and Bill Lloyd
Shelly London and Charles
Kanter
Jane and Bill Macan
Meena Mansharamani
Dr. and Mrs. Jeffrey L.
McClendon
Joseph McGrath
Moreen and John McGurk
Martin J. McLaughlin
Joyce Menschel
Pamela and Michael Miles
In Loving Memory of Ellie
King, from Betsy and
Sam Militello
Helene and Henry Morrison
Mr. and Mrs. M. Saleem
Muqaddam

Michael J. Nesspor
Leonard and Randi
Newman
Mr. Stanley Newman and
Dr. Brian Rosenthal
Albert Nicolai
New York State
Assemblyman Daniel
O'Donnell
Trisha A. Ostergaard
Stewart and Rachelle
Owen
Cathryn and Victor
Palmieri
Geraldine Parker and
Tanya Waddell
Richard and Kayla Pechter
Nancy and Peter Phillips
Tony and Ruthe Ponturo
Robert A. Press, M.D.
Ephraim and Gail Propp
Sheila and Steve Redan
Michael and Susan
Reuben
Arthur Richenthal and
Joan Easton
Richmond County Savings
Foundation
Daniel and Joanna S. Rose
Janet and Marvin Rosen
Frances and Paul
Rubacha
David A. Ruttenberg
Dr. and Mrs. Nathan E.
Saint-Amand
Nathan and Nancy
Sambul
Steven Schroko
Frank Schwarzer and
Cindy Muth
Victor and Susan Shedlin
Mr. and Mrs. Brian Shoot
Nancy and William Sidford
Sidley Austin LLP
Violeta Smadbeck
Denise Sobel and Norman
Keller
Barbara and David Stoller
Trace and Susan Stout
Bonnie and Tom Strauss
Gerald and Elizabeth
Strauss
The Dorothy Strelsin
Foundation
Lise Strickler and Mark
Gallogly
Dr. and Mrs. Jonathan
Strumpf

The Summer Fund
Dr. William J. Sweeney III,
In loving memory
Mr. and Mrs. David Swope
Patricia and Jeff Tarr
Travel Impressions, Ltd.
John and Louisa Troubh
Helen S. Tucker
Mrs. Benjamin and
Eugenia Wainfeld
Joan Waricha
Martin B. Wasser
Johanna Weber and Edwin
Bacher
Stacey and Jeffrey Weber
John and Amy Weinberg
The Wenig Family
Charles Werner
Frederick Wildman &
Sons, LTD
The Hon. & Mrs. Carl S.
Wolfson
Margaret Ann Wood
John J. Yarmick
Anonymous

PATRONS

Roger and Virginia Aaron
Marlon Abayan
Patricia and Alan B.
Abramson
Mildred and Arnold
Abelson
Carol and William
Achenbaum
Laura Addams
Edna and Kenneth
Adelberg
Edward and Karen Adler
Elaine and Myron Adler
Greg Albiero
Ann B. Alford
Anne Altucher
American Theatre Wing
Bruce Ampolsky
Rozlyn L. Anderson
Gregory Anselmi
Jerry Arrow
Antoinette and Nicolina
Astorina
Ina and Paul Avrich
Hany S. Awadalla
Babbitt Family Charitable
Trust
Earl L. Bailey
Mr. and Mrs. George Baker
Betty Ballin

Susan Barbash and Eric
Katz
Didi and David Barrett
Peter Barsoom
Barbara Baumstein/David
L. Lieb Foundation
Simone Bedient
Jane H. Bendheim
Becky and Roger Benson
Arie and Sharon Ben-Zvi
Leonard and Linda
Berkowitz
Colleen Bess
Cara and Bill Biach
Mr. Robert Bianco
Mark and Gloria Bieler
Robert and Ellen
Bienstock
Robert N. Bittar
Elizabeth D. Black Fund
Susan L. Blair
Allison M. Blinken
Richard and Lori Bobula
Barbara and Daniel Bock
Margot and Jerry Bogert
Scott and Roxanne Bok
Jeffrey and Lynne Bolson
Frank and Shirley Bonner
Mr. and Mrs. William C.
Bousquette
William C. Bowers and
JoAnne Kennedy
Raymond Bragar and
Robin
Hertz, Ph.D.
Paul and Ann Brandow
Mr. and Mrs. Donald B.
Brant Jr.
John Bretschneider
Mr. and Mrs. Glenn A. Britt
Marilyn Broege
Donald and Jadwiga
Brown
Nikki Brown
Jeffrey and Luz Brunner
Anthony and Laura Burke
Robert and Virginia Burns
Henry and Betty Joan Burr
Ann Butera
Shawn and Brook Byers
Catherine Cahill and
William Bernhard
Janet and Richard
Caldwell
Linda Beck Cane
Walter and Linda Censor
Carol and Steven Chamoff



Board member James Burke, Philippa Whalen, and *Les Liaisons Dangereuses*' Ben Daniels



Sunday in the Park with George's Jenna Russell, with production underwriters Ted and Mary Jo Shen



Adelaide Zagoren, Norman and Laura Baron of The Blanche and Irving Laurie Foundation

JuJu Chang and Neal Shapiro
 Allan Chasanoff and Joanna Bayless
 Phyllis and Herbert Chernin
 Carol and Wallace Chinitz
 Linda and Adam Chinn
 Janet and Kent David Christensen
 Citicom Technologies
 Clark Transfer, Inc.
 Walter and Ursula Cliff
 Janet Coffey
 Barbara and Rogin Cohen
 Edward and Arlene Cohen
 Lois and Irvin Cohen
 Ronald Cohen
 John J. Colantuono
 Michael Coles and Edie Langner
 Peter and Nancy Coll
 Dr. Topher Collier
 Carol and Joseph Condon
 Daniel and Sally Connolly
 Ellen and Winthrop Conrad
 Leon and Michaela Constantiner
 Eva and Leslie Cooper
 Joseph A. Cornacchia and Eileen Bonner
 Laura Cornell
 Mr. Joseph Cosgriff
 Joan and Richard Cowlan
 Barbara Cramer
 Anna E. Crouse
 Robert and Karen D'Aleo
 Cody Dalton
 Ide and David Dangoor
 Peter Davenport
 Steven Davenport
 Dennis and Jo Ann Delafield
 Christine Denham and Robert Stein
 Jamie DeRoy
 Alvin Deutsch
 Diane Donnelly
 Mary J. Donohue
 Diana and Jay Dorman
 Alexis Doyle
 Lynne and Ralph Drabkin
 In Honor of Murray Drach
 Deborah Dumont
 Francisco Duque
 June Dyson
 Mr. and Mrs. Neil Edelman
 Peggy Ellis

Donald C. Ellwood
 Michael L. Emmel
 Irwin Engelman
 Stanley Epstein
 Charles and Sylvia Erhart
 Rafael Etzion
 Bruce and Carol Factor
 Daniel and Christine Fallon
 Harvey and Fiona Fein
 Joan and William Felder
 Mr. and Mrs. Jerry M. Field
 Anita and Gilbert Fields
 Peter E. Fisch and Jill Levy-Fisch
 Arlene and Daniel Fisher
 Selma Flash
 Mr. and Mrs. Arthur Fleischer, Jr.
 Christopher Flynn and Maureen Marren
 Ellen Soloway Fox
 In Memory of William Fox- The William Fox Foundation
 Mr. and Mrs. Edward W. Franklin
 Patricia and Joseph Franzetti
 Nancy and Sidney Freedman
 Martin Fridson and Elaine Sisman
 Judith Stillman-Frost and Dr. William Frost
 Lawrence and Rubie Fruchtman
 Barbara A. Gallay
 Richard Gallichio
 Judith A. Garson and Steven N. Rappaport
 Bruce and Alice Geismar
 Mr. Dan Gerhard
 Myrna and Bob Getz
 Evelyn S. Gilman
 Gilston Electric Contracting Corporation
 Beverly and Joel Girsky
 Hilary Giuliano
 Edythe and Mathew Gladstein
 Eileen M. Gleimer
 Daniel and Jodi Glucksman
 Sylvia and Wayne Golden
 Ms. Susan Goldstein
 Ann M. Goodbody
 Martin H. Goodman

Maurice and Georgine Goodman
 Irwin and Elizabeth Gotlieb
 Elizabeth Gouger and Alen Shapiro
 Mr. and Mrs. Harry E. Gould Jr.
 Michael and Fran Grabow
 Ilse W. Grafman
 Gai and Mark W. Grannon
 Robert Green
 Mike Greenly
 James and Marilee Greenwald
 Lucy Grollman
 Max Hahn
 Helen R. Hamlin
 Jonno and Julie Hanafin
 Izumi Hara and David Koschik
 Mary Harada
 Ms. Mary Harmon
 Dr. Henry T. Harris
 Laura and Mike Hartstein
 Wendy and David Hashmall
 Aubrey E. and Sylvia Hawes
 Mary Healy
 Dr. Pauline G. Hecht
 Molly K. Heines and Thomas J. Moloney
 Caryn Hemsworth
 Robert L. and Laura Henkle
 Mr. and Mrs. Harry Henshel
 Ruth and Karl Hess
 Fredrick Hessler
 Robert and Mary Higgins
 Jeannette and Grant Hobson
 John and Sarah Hock
 Francine and David Holtzman
 Jay Horine
 Miriam and John Hunt
 John H. Insabella
 Andrew and Connie Ippolito
 Carl M. Jacobs
 Lola and Edwin Jaffe
 Diane Jaffee and David O'Brian
 James W. Johnson and Michael L. Connell
 Ms. Barbara Jonas
 Ms. Roberta A. Jones
 Miles and Judy Josephson
 Janet P. Kandel
 Stacy J. Kanter and Eric M. Kornblau

Stephen Kantor and David Lindsey
 Mr. and Mrs. Barry A. Kaplan
 Irwin and Marion Kaplan
 Dr. Robert Karlin
 Jacqueline and Michael Kates
 Amy L. Katz and Irving Scher
 Fred Katz
 Tom and Betsy Kearns
 Joan Kedziora, M.D.
 Ms. Elizabeth Kehler
 Robert and Susan Keiser
 Lee S. Kempler and Allison Pease Kempler
 David Kernahan
 Susan M. King
 Carl and Lorna Kleidman
 Robert and Betsy Knapp
 Marvin and Rosalind Kochman
 Mr. and Mrs. Daniel F. Kolb
 Natalie and Mel Konner
 William K. and Naomi Kramer
 Jill and Peter Kraus
 Charles J. Krause
 Stan and Sarann Kraushaar
 Mark Krueger Charitable Fund of the Tides Foundation
 Douglas Krupp
 George and Lizbeth Krupp
 Rudolf and Alix Laager
 Wendy and Jerry Labowitz
 W. Loeber and Barbara Landau
 Linda Landis
 Mr. and Mrs. Kurt Landsberger
 Jeffrey Landsman
 Laura S. Langford
 Carmen E. Lantigua
 James and Dale Lattimer
 Herbert Levetown
 Dick and Rose-Marie Lewent
 The Lewison Family
 Daniel M. Libby, M.D. and Nancy E. Kemeny, M.D.
 Gerald and Eileen Lieberman
 Richard and Rebecca Lindsey

Kathleen Lingo
 Judith Anne and Michael Lipstein
 Dave and Debbie Livingstone
 Wanda and Steve Lockwood
 Linda Loughren
 Donald and Barbara Louria
 The Lucy Foundation
 Mr. and Mrs. Michael J. Lyons
 Mr. and Mrs. James Macie
 Muriel L. Macnab
 Reeva and Ezra P. Mager
 Caryn and James Magid
 Michael and Carol Maher
 Richard H.M. and Gail Lowe
 Maidman
 Stanley L. Malkin, M.D. and Candace N. Conard
 Warren and Susan Malone
 Dr. Joseph Mandelbaum and Mrs. Reva D. Mandelbaum
 Barry Margolius
 Andrea Marks and David Warmflash
 Edwina and Marvin Marks
 Wayne P. Marshall and John Iaconetti
 Susan Martin and Alan Belzer
 Larry and Marilyn Martone
 Jeffrey and Wendy Maurer
 Enken and Jerome Mayer
 Ferrell P. McClean
 Robert and Donna McCoy
 James and Wren McNeil
 Melissa Meyer and Peter Mensch
 Herman and Susan Merinoff
 W. Peter Metz
 Anne Miller and Stuart Breslow
 Stacey and Eric Mindich
 Mr. and Mrs. Gerald D. Mintz
 Suzanne Mirra
 Ms. Jacqueline Mitchell
 Elisabeth Morten
 James T. Morton
 Jordan and Sue Nager
 Anne and Andrew Namm
 Daniel M. and Brooke G. Neidich

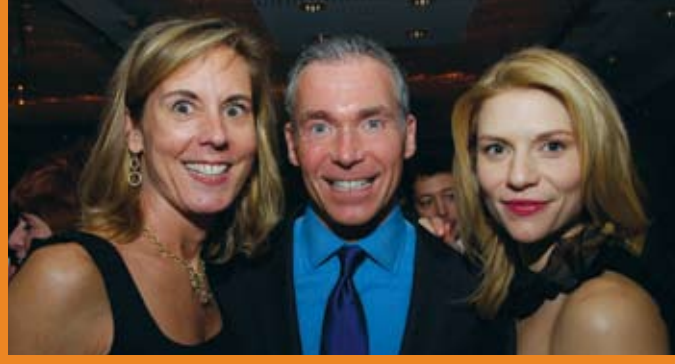
Ronald M. Neumann and Jane A. Zimmy
 Richard Neustadter
 Sheila Nevins
 Dennis & Shelly Newman
 Anh-tuyet Nguyen and Robert Pollock
 Fred and Gilda Nobel
 Nancy Jeanne O'Connor
 Norman Odlum
 Irma Oestreicher
 Kathleen O'Grady
 Dorinda J. Oliver
 David C. Olstein
 One World Fund
 Ms. Maura O'Sullivan
 Nicole and Bruce Paisner
 Joy Pak and David Deutsch
 Michael and Gabrielle Palitz
 Sheila Parham
 Gerald and Naomi Patlis
 Mary Pearl and Don Melnick
 Brian and Toby Pecker
 Arnold S. Penner and Madaline Berley
 Jim and Susie Perakis
 Dr. Carolyn Perla
 Dara and Mark Perl binder
 Barbara and David Perlmutter
 Carol Gray & Harold Perlmutter
 Dr. Frank Petito
 Frank Plateroti and Dr. John Mully
 Terri Poli and J. Craig Weakley
 Michael Pollack and Barbara Marcus
 Dr. and Mrs. Peter Pressman
 Karen Pritzker
 Jeffrey and Judith Prussin
 Steve and Rochelle Prystowsky
 Rita and Louis V. Quintas
 Harvey and Pauline Radler
 Mr. Jeffrey Raff
 Mr. Tony Randazzo
 Timothy and Joyce Ratner
 Michael Recanati and Ira J. Staffeld
 David and Donna Reilly
 Denise Rein
 Elaine and Ely Reiss
 Dr. Jack Richard



Playwright Terrence McNally and Rosie Perez of *The Ritz*, with Board member John McGarry



Longtime friend of Roundabout Norma Langworthy and Bill Hip



Board members Mary Solomon and Steve Schroko, with *Pygmalion's* Claire Danes

Ira Riklis
 Albert and Adele Robbins
 Rachel and Richard Robbins
 Elizabeth Robertshaw
 Fred and Judy Robins
 Sandra Rocks
 Hila and Saul Rosen
 Jeffrey and Marjorie Rosen
 Joseph S. Rosenberg
 Pamela and Robert J. Rosenberg
 Beth and Jason Rosenthal
 Carol and James Rotenberg
 Paul and Tina W. Rotstein
 Adam and Barbara Rowen
 Joseph B. Rubin
 Barbara H. Rudd
 Tamar E. Rudich
 Peter M. and Bonnie Sacerdote
 Karen L. Sacks
 Jeffrey and Dorothy Samel
 Barbara and John Samuelson
 Elaine Sargent
 Anne and Arthur Scavone
 Roger M. Schaffland
 Pam and Scott Schaffer
 Dr. and Mrs. Burton A. Scherl
 George and Joan Schiele
 Francis E. Schiller, Esq.
 Bernard Schleifer
 Carole A. Schwartz
 Mr. John Scott
 Kathleen A. Scott
 Elias and Barbara Sedlin
 Jon and NoraLee Sedmak
 Betsey and Arthur Selkowitz/ Selkowitz Family Foundation
 Dr. and Mrs. Gary Selmonsky
 Dr. and Mrs. Alan Shalita
 Harold and Myra Shapiro
 Stephen Shapiro and Amy Attas
 Suzy Shectman
 Kenneth G. Shelley
 The Shen Family Foundation
 Dr. Howard I. Sherman
 Bippy and Jackie Siegal
 Frederic A. Silberman and Sharon Kim Siegfried
 Jack and Shirley Silver

Maida and Howard Silver
 Eileen Silvers and Richard Bronstein
 Lesley Silvester
 Linda G. Singer and Louis Klein, Jr.
 Marcia Singer
 Joan Sirefman
 Loren and Marlene Skeist
 C.B. and Natasha Slutzky
 Floyd and Jane Smith
 Lynn and Jeffrey Smith
 Vincent M. Smith and Alice Silkworth
 Lavinia and Bryan Snyder
 Leon and Marilyn Sokol
 Herbert and Helene Solomon
 Annaliese Soros
 Jeffrey Sosnick and Albert A. Carucci
 Ruth Sovronsky
 Kathy Speer and Terry Grossman
 Sophia and Edward Spehar
 Lois and Arthur Stainman
 Sperber and Steinfeld Families Charitable Trust
 Lee R. Steelman
 Kathryn Steinberg
 Lenore Steiner and Perry Lerner
 Tom and Wendy Stephenson
 Linda Stocknoff
 Mr. and Mrs. Thomas Stretton
 Ms. Elizabeth Stribling
 Charles Sullivan
 Carl and Barbara Susnitzky
 Brenda and Leonard Swartz
 Ann and James Swenson
 Linda and Jay Tanenbaum
 Michael Tarpley and Amy Nathan
 Glenn and Diane Taylor
 Barbara Goldfarb
 Tepperman and Fred Tepperman
 Barb and Wayne Thornbrough
 Jane Timken
 Myra Leigh Tobin
 Marcia Townley
 Marvin and Lee Traub
 Litsa and Constantine Tsitsera
 Ruth Turner
 Melissa and Gerald Uram

Peter and Helene Van Oort Keers
 Bernardette Vaskas
 Heidi and M. Scott Vayer
 Beate and Klaus von Stutterheim
 Gerald Wachs and Gail Postal
 Mary Wallach
 Milton J. and Caroline Walters
 Toby and Stacie Webb
 Evelene Wechsler
 Bryan and Margie Weingarten
 Marcia Weinschel
 Michael and Leah Weisberg
 Ruth and Peter Weiss
 Sylvia Welsh
 Lucille Werlinich
 Neil Westreich
 Tanya Wexler and Amy Zimmerman
 Glenn Whitmore
 Anita and Byron Wien
 Susan and Maury Wilkins
 Margo Wintersteen
 Debi and Steven Wisch
 Myles and Barbara Wittenstein
 Linda Wolff and John M. Romanow
 Bernice Wollman and Warren Rubin
 Billy F. B. Wong and Stephanie Gordon
 Gilbert Wong
 Valerie and Thomas Wood
 Ms. Ann Wozencraft
 Peter and Susi Wunsch
 Michael A. Young
 Eva Young
 Helena Ann Yuhas
 Gloria Zeche
 Mr. and Mrs. Al Zemel
 Leslie Greher Zimmermann and Alan J. Zimmermann
 Anonymous

GALA DONORS (\$3,000+)
 American Airlines, Inc.
 Anonymous
 Leslie and Harrison Bains
 Debra and Leon Black
 Laura and Lloyd Blankfein
 Christina Bloom
 Bob Boyett

Devon and Peter Briger
 Anthony and Laura Burke
 James J. Burke, Jr. and Philippa Whalen
 Cathy Chernoff
 Chinook Charitable Trust
 Ms. Mary Cirillo-Goldberg and Mr. Jay N. Goldberg
 Creative Artists Agency
 The Crespi Family
 Dan and Ellen Crown
 Ravenel and Beth Curry
 Fred Davis and Rona Kirsh
 Lynn Davis/U.S. Trust
 Bank of America Private Wealth Management
 Mike and Pilar de Graffenried
 Darren P. DeVerna / PRG
 DeWitt Stern Group
 Cory and Bob Donnalley Charitable Foundation
 Douglas and Susanne Durst
 Lynn and Wesley Edens
 Caryn and Craig Effron
 Peggy and Mark Ellis
 Ernst & Young LLP
 Alfred and Harriet Feinman Foundation
 Mr. and Mrs. Lew Frankfort
 Drs. Leslie and Stanley Friedman
 Arlyn and Edward Gardner
 Yetta and Irving Geszel
 Bill and Suzanne Givoe
 Givoe Company
 Edythe and Mike Gladstein
 Patricia and Bernard Goldstein
 The Goldstone Family Foundation
 Perry and Martin Granoff
 Deborah Hartnett
 Maureen A. Hayes
 Anne Marie and Stephen Haymes
 Ruth and Stephen Hendel
 Brett and Greg Heyman
 Suzan and Mitchell Hochberg
 Hogan & Hartson, LLP
 Home Box Office, Inc.
 Jeffrey A. Horowitz
 Proskauer Rose LLP
 Soledad DeLeon Hurst and Robert J. Hurst

Robert, Sally, and Haley Huxley
 Bill Huxley
 JPMorgan Chase
 The Kaplen Foundation
 Dr. Joel and Robin Kassimir
 Kenneth Cole Foundation
 Stephanie and Ron Kramer
 Nanette L. Laitman
 Norma S. Langworthy
 Christine LaSala and Ellen Lipschitz
 Cathy Lasry
 Bonnie Englehardt
 Lautenberg and Senator Frank Lautenberg
 Taryn and Mark Leavitt
 Kurt F. Leopold
 Ellen and Allwyn Levine
 Dick and Rose-Marie Lewent
 Fredric and Tami Mack
 Jack Makoujy
 Jill and Thomas Marino
 Stacy and Richard Marquit
 David and Anita Massengill
 mcgarrybowen
 Iliana McGinnis-Cahill
 Merrill Lynch & Co.
 Akiko Mikumo
 Mr. and Mrs. Michael Minikes
 Carol Mitchell
 Frank Mosomillo/Ryder Construction
 Music Theatre International
 Kathryn Myers
 Michael and Gabrielle Palitz
 Sheila Parham and Frank Mayer
 The New York Times
 Kathryn C. Patterson
 The Laura Pels Foundation
 Lisa Pevaroff-Cohn and Gary Cohn
 Jill and Mark Rachesky
 Lois Robards
 Lois Robbins and Andrew Zaro
 Amy and Richard Ruben
 May and Samuel Rudin Family Foundation, Inc.
 Douglas and Patty Sacks
 Jane Dresner Sadaka and Ned Sadaka
 Steven A. Sanders
 Steven Schroko

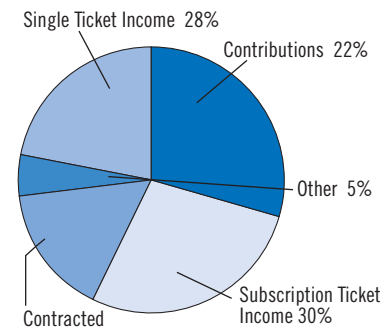
Chip Seelig
 Ruth and Jerome A. Siegel
 Damian Bazadona/ Situation Marketing
 Mary C. and David M. Solomon
 SpotCo
 Loren Stahl
 Candice and Steven Stark
 Jean Steinberg
 Bonnie and Tom Strauss
 The Dorothy Strelsin Foundation
 Liz and Kent Swig
 Richard Ticktin and Fran Kumin
 Diane and Tom Tuft
 Yolanda Turocy
 Eve and Ronald Urvater
 Mr. and Mrs. Barry Volpert
 Claudia Wagner
 Jeffrey C. and Suzanne C. Walker
 Evelene Wechsler and Gary D. Friedman
 Carol and Michael Weisman
 Robert and Susan Wilder
 Linda and Robert Williams
 Williams Real Estate
 Myles and Barbara Wittenstein
 Amanda and Gary Wolf
 Allen and Marie Wolpert
 Times Square Alliance

We also thank the thousands of Friends of Roundabout and donors who made gifts to our 2007-08 Annual Fund Campaign who regrettably cannot be listed due to space limitations.

REVENUES & EXPENSES

Operating Fund (in thousands)	8/31/08	8/31/07
REVENUE FROM OPERATIONS		
Subscription Ticket Income	12,498	13,343
Single Ticket Income	18,212	12,230
Contracted Performance Fees*	6,955	7,137
Investment Income	8	306
Rental/Other Income	1,687	1,544
Total Earned Revenues	39,360	34,560
CONTRIBUTED REVENUES		
Individual Contributions	5,233	4,576
Foundations	1,790	1,889
Corporations	511	769
Corporate Sponsorships	1,172	1,133
Government Grants	469	519
Net Benefit Income	1,299	994
Total Contributed Revenues	10,500	9,879
Total Revenues	49,861	44,439

INCOME BY SOURCE



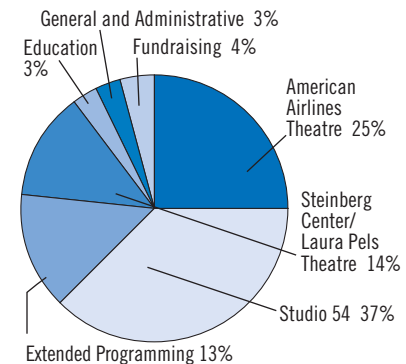
CONTRIBUTIONS:

Individuals	10%
Foundations	4%
Corporations	5%
Government	1%
Net Benefit	2%

EXPENSES

<i>Program Services</i>		
American Airlines Theatre	13,899	12,037
Studio 54	16,952	17,540
Steinberg Center/Laura Pels Theatre	7,696	6,841
Extended Programming**	7,311	6,181
Education	1,098	1,234
<i>Supporting Services</i>		
General and Administrative	1,515	1,624
Fundraising	2,183	2,091
Total Expenses	50,655	47,547

EXPENSES BY SERVICES



Net Surplus (Deficit) Before Depreciation	(794)	(3,108)
Depreciation	2,265	2,121
Net Change from Operations	(3,060)	(5,229)
Total Net Assets Beginning of Year	77,736	75,520
Change from Subscription Operations	(3,060)	(5,229)
Change from Capital / Other / Restricted	4,649	7,445
Net Assets End of Year	79,325	77,736

2007-08 Audience Figures†

Number of Productions:	8
Number of Performances:	839
Number of Subscribers:	43,735
Community Tickets:	46,454
Total Attendance:	493,229

* *Twelve Angry Men* tour.

** *Twelve Angry Men* tour, *Sunday in the Park With George* extension.

† Excludes *Twelve Angry Men* tour

A copy of Roundabout's 2007-08 audited financial statement is available by contacting the Roundabout Theatre Development Office at 212.719.9393.

Roundabout Theatre Company is a 501(c)(3) not-for-profit organization.

ROUNABOUTTHEATRECOMPANY

STAFF

Todd Haimes, *Artistic Director*
Harold Wolpert, *Managing Director*
Julia C. Levy, *Executive Director*
Scott Ellis, *Associate Artistic Director*

ARTISTIC STAFF

Jim Carnahan, *Director of Artistic Development/*
Director of Casting
Robyn Goodman, *Artistic Consultant*
Doug Hughes, *Resident Director*
Scott Elliott, Bill Irwin, Joe Mantello, Mark Brokaw,
Kathleen Marshall, *Associate Artists*
Jill Rafson, *Literary Manager*
Carrie Gardner, *Casting Director*
Kate Schwabe, *Casting Associate*
Stephen Kopel, *Casting Associate*
Erica Rotstein, *Artistic Associate*
Josh Fiedler, *Literary Associate*
Jillian Cimini, *Casting Assistant*

EDUCATION STAFF

Greg McCaslin, *Education Director*
Reneé Flemings, *Director of Instruction and*
Curriculum Development
Jennifer DeBella, *Education Program Manager*
Amanda Hinkle, *Program Associate for*
School-based Programs
Jay Gerlach, *Program Associate for*
Theatre-based Programs
Aliza Greenberg, *Education Coordinator*
Ted Sod, *Education Dramaturg*
Teaching Artists: Cynthia Babak, Victor Barbella,
LaTonya Borsay, Mark Bruckner, Joe Clancy,
Vanessa Davis, Joe Doran, Elizabeth Dunn-Ruiz,
Janet Edwards, Kevin Free, Tony Freeman, Sheri
Graubert, Matthew A.J. Gregory, Melissa Gregus,
Adam Gwon, Devin Haqq, Carrie Heitman, Karla
Hendrick, Jim Jack, Jason Jacobs, Lisa Renee
Jordan, Jamie Kalama, Alvin Keith, Tami Mansfield,
Erin McCready, Deidre O'Connor, Andrew
Ondrejcek, Maya Parra, Laura Poe, Jennifer
Rathbone, Leah Reddy, Amanda Rehbein, Bernita
Robinson, Christopher Rummel, Cassy Rush,
Nick Simone, Heidi Stallings, Daniel Sullivan,
Carl Tallent, Vickie Tanner, Jolie Tong, Cristina
Vaccaro, Jennifer Varbalow, Leese Walker, Eric
Wallach, Christina Watanabe, Gail Winar, Conwell
Worthington, III
Teaching Artist Apprentices: Carrie Ellman-Larsen,
Deanna Frieman, Meghan O'Neill

ADMINISTRATIVE STAFF

Sydney Beers, *General Manager*
Greg Backstrom, *Associate Managing Director*
Rebecca Habel, *General Manager,*
American Airlines Theatre
Rachel Ayers, *General Manager, Harold & Miriam*
Steinberg Center for Theatre
Nancy Hirschmann, *General Counsel*
Stephen Deutsch, *Human Resources Manager*
Jeff Goodman, *MIS Director*
Maggie Cantrick, *Associate General Manager*
Becky Skoff, *Assistant to the Managing Director*
Valerie Simmons, *Operations Manager*
Nancy Mulliner, *Manager of Corporate and*
Party Rentals
Scott Kelly, *Office Manager*
Micah Kraybill, *MIS Database Administrator*
Dylan Norden, *MIS Associate*
Dee Beider, Raquel Castillo, Elisa Papa, Allison
Patrick, Monica Sidorchuk, *Receptionists*
Darnell Franklin, *Messenger*

FINANCE STAFF

Susan Neiman, *Director of Finance*
John LaBarbera, *Assistant Controller*
Frank Surdi, *Accounts Payable Administrator*
Yonit Kafka, *Financial Associate*
Joshua Cohen, *Business Office Assistant*

DEVELOPMENT STAFF

Jeffery Lawson, *Director of Development*
Julie K. D'Andrea, *Director, Institutional Giving*
Steve Schaeffer, *Director, Special Events*
Joy Pak, *Director, Major Gifts*
Amber Jo Manuel, *Director, Patron Programs*
Lise Speidel, *Donor Information Systems Manager*
Gavin Brown, *Telefundraising Manager*
Eric Scott, *Manager of Patron Programs*
Roxana Petzold, *Manager, Corporate Relations*
Marisa Perry, *Patron Programs Associate*
David Pittman, *Patrons Services Associate*
Ashley Firestone, *Special Events Associate*
Nick Nolte, *Institutional Giving Associate*
Nicholas Lalla, *Development Assistant*
David Jones, *Assistant to the Executive Director*

MARKETING STAFF

David B. Steffen, *Director of Marketing and*
Sales Promotion
Wendy Hutton, *Associate Director of Marketing*
Margaret Casagrande, *Marketing/Publications*
Manager
Stefanie Schussel, *Marketing Manager*
Shannon Marcotte, *Marketing Associate*
Keith Powell Beyland, *Website Administrator*
Marco Frezza, *Director of Telesales Special Promotions*
Anthony Merced, *Telesales Office Manager*
Patrick Pastor, *Telesales Office Associate*

TICKET SERVICES STAFF

Charlie Garbowski, *Director of Sales Operations*
Ellen Holt, *Ticket Services Manager*
Ethan Ubell, *Subscription Manager*
Edward P. Osborne, Andrew Clements, Jaime
Perlman *Box Office Managers*
Jeff Monteith, *Group Sales Manager*
Krystin MacRitchie, Robert Morgan, Nicole
Nicholson, *Assistant Box Office Managers*
Robert Kane, Bill Klemm, Carlos Morris, *Assistant*
Ticket Services Managers
Thom Walsh, *Customer Services Coordinator*
Solangel Bido, Lauren Cartelli, Joe Clark, Barbara
Dente, Nisha Dhruva, Adam Elsberry, Lindsay
Ericson, Scott Falkowski, Catherine Fitzpatrick,
James Graham, Tova Heller, Nicki Ishmael, Kate
Longosky, Elisa Mala, Mead Margulies, Chuck
Migliaccio, Adam Owens, Kayrose Pagan, Tom
Protulipac, Jessica Pruett-Barnett, Kaia Rafoss, Josh
Rozett, Heather Siebert, Nalane Singh, Lillian Soto,
Hannah Weitzman, Kara Harrington, Kenneth
Martinez, Paul Winkler *Ticket Services*

AMERICAN AIRLINES THEATRE STAFF

Carly Difulvio, *Company Manger*
Glenn Merwede, *House Carpenter*
Brian Maiuri, *House Electrician*
Andrew Forste, *House Properties*
Dann Wojnar, *House Sound*
Susan J. Fallon, *Wardrobe Supervisor*
Ted Osborne, *Box Office Manager*
Robert Morgan, *Assistant Box Office Manager*
Steve Ryan, *House Manager*
Zipporah Aguasvivas, *Associate House Manager*
Jacklyn Rivera, *Head Usher*

Ilia Diaz, Anne Ezell, Adam Wier, Idair Melendez,
Rebecca Knell, James Watanachaiyot, Kristin Asher,
Sayyid Centend, Sara Curtin, Joseph Jankowski,
Joaquin Melender, Celia Perez, Ernesto Sanchez,
Victoria Tjoeller, *House Staff*
Julious Russell, *Security*
Additional Security Provided by Gotham Security
Jerry Hobbs, Willie Phillips, Daniel Pellew, Magali
Western, *Maintenance*
Sweet Concessions, *Lobby Refreshments*

STUDIO 54 THEATRE STAFF

Denise Cooper, *Company Manager*
Matthew Armstrong, *Theatre Manager*
Dan Hoffman, *House Carpenter*
Josh Weitzman, *House Electrician*
Lawrence Jennino, *House Properties*
Nadine Hettel, *Wardrobe Supervisor*
Jaime Perlman, *Box Office Manager*
Kristin Macritchie, *Assistant Box Office Manager*
LaConya Robinson, *House Manager*
Jack Watanachaiyot, *Associate House Manager*
Jonathan Martinez, *Assistant House Manager*
Justin Brown, Linda Gjonbalaj, Hajjah Karriem, Jen
Kneeland, Essence Mason, Nicole Ramirez, Delilah
Rivera, Diana Trent, Stella Varriale, Nick Wheatley,
House Staff
Gotham Security, *Security*
Ralph Mohan, Edward Perez, Dayquan Robinson,
Maintenance
Sweet Concessions, *Lobby Refreshments*
Marquee Merchandise LLC, *Merchandise*

THE HAROLD AND MIRIAM STEINBERG CENTER FOR THEATRE STAFF

Nicholas Caccavo, *Company Manager*
Matthew Armstrong, *Theatre Manager*
Nicholas Wolf-Lyndon, *Master Technician*
Robert W. Dowling II, *Assistant Technician*
Carrie L. Kamerer, *Wardrobe Supervisor*
Dorothea J. Kenul, *House Manager*
Frances Barrios, Grisel Bermejo, Jasmine Bermudez,
Joseph Beuerlein, Roger Calderon, Chris Czyn,
Glenda DeAbreu, Drew Gotesman, Ivonne Herrera,
Ricardo Hinoa, Barry Horbal, Jason Jacoby, Marlene
Marin, Dante Neil, Wayne Paul, Katherine Roscher,
Kaitlin Stern, Chris von Hoffmann, *House Staff*
Adolpho Duran, DayQuan Robinson, *Maintenance*
Sweet Concessions, *Lobby Refreshments*

GENERAL PRESS REPRESENTATIVES

Adrian Bryan-Brown, Matt Polk, Jessica Johnson,
Amy Kass
Boneau/Bryan-Brown

ROUNABOUT THEATRE COMPANY 2007-08 ANNUAL REPORT

Julie D'Andrea, Amber Jo Manuel,
Joy Pak, *Editors*
David Jones, *Project Manager*
Margaret Casagrande, *Designer*
Steve Schaeffer, *Feature Writer*

PHOTO CREDITS

Production Photos, Joan Marcus
Special Events Photos, Anita and Steve Shevett

Mission of Roundabout Theatre Company:



Re-energize classic plays and musicals in an effort to team great theatrical works with the industry's finest artists.

Develop and produce new works by today's great writers and composers.

Provide educational programs that will enrich the lives of children and adults.

Retain a loyal audience through a commitment to the subscription model.

ROUNDABOUTTHEATRECOMPANY

231 West 39th Street, Suite 1200, New York, NY 10018

Telephone: 212.719.9393 Fax: 212.642.9636

www.roundabouttheatre.org

Roundabout Theatre Company is a 501(c)(3) not-for-profit organization.