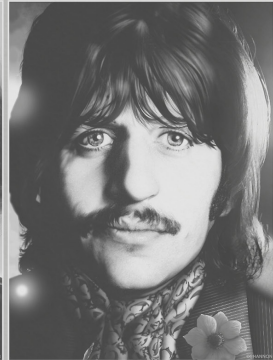
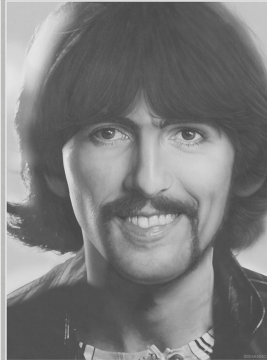


LIVERPOOL
INTERNATIONAL
BEATLEWEEK

FESTIVAL

22-28-08-2018



22ND – 28TH AUGUST 2018

50 Years of 'The White Album' : 50 Years of Apple : Pattie Boyd : Tony Bramwell
Joey Molland : The Analogues : Freda Kelly : The Cavern Club Beatles
The Lennon & McCartney Songbook : It's George's Birthday : Mark Lewisohn
Apple Jam : Johnny Hutchinson : Tribute to Mersey Beat : Scousechella
Beatles Convention : Alma De Cuba : The Cavern Club
Hard Days Night Hotel : Locarno Ballroom : Adelphi Hotel

INTERNATIONAL BEATLEWEEK 2018

Welcome to International Beatleweek 2018, the biggest Beatles celebration ever. If you have never been before you are in for a treat, and if you have, welcome home!

For 7 days and 7 nights, the music of John, Paul, George and Ringo will ring out from every nook and cranny of the city. 70 of the finest Beatle tribute bands from over 20 countries and fans from all over the world will be here, in Liverpool, with one mission – The Beatles!

Now in its 32nd year, International Beatleweek (IBW for short) is a must for all fans - Beatle heaven! 2018 marks several 50th anniversaries in the Beatle world - The Beatles (White Album), Rishikesh, Apple Corps and more will all be celebrated during the festival. If this is your first time you will be blown away. You will make life long memories and friends forever. If you're lucky, you might even get some sleep! Here is a day by day guide to the festival. Don't forget there's also live music all day every day in the Cavern Club and Cavern Pub!

WEDNESDAY

22nd AUGUST

IBW 2018 starts where it all began – the world famous **Cavern Club**. The Beatles played here a staggering 292 times so where better to start our week-long celebration? Live Beatles music ringing out over two stages in the **Cavern Club** and a third stage across the street at the **Cavern Pub**.

THURSDAY

23rd AUGUST

We continue our celebration of the best band in the world, again on two stages at the **Cavern Club** and a third stage over at the **Cavern Pub**. Even more fans and bands arriving from all over the world, all gathered on Mathew Street to party until late at night.

FRIDAY

24th AUGUST

Today we return to one of our favourite IBW venues, the beautiful converted church, **Alma de Cuba**, for “**It's George's Birthday**”. George would have been 75 this year and to celebrate each band will pay their own tribute to George, culminating in a very special finale. We will also have music all day outside on the very popular patio stage. Don't forget to book for lunch or dinner directly with Alma de Cuba.

In the early evening we head over to the **Philharmonic Hall** to mark 50 years of the iconic “**White Album**”. Holland's premier Beatles band, **The Analogues**, will present the album in its entirety with the same attention to detail that they gave to their highly acclaimed 2017 touring production of the Sgt. Pepper album.



After the show, we head back to IBW base, the **Adelphi Hotel**, for our first **Late Night Party** – Four live stages until the wee small hours and a chance to catch your breath (or not!) before Saturday starts!

SATURDAY

25th AUGUST

Every year on Saturday, we like to have a day out and this year is no exception as we head to **The Olympia** (formerly The Locarno Ballroom). The Beatles played here on Valentine's Day in 1963, just as “Beatlemania” was sweeping the nation. This ornate venue will take your breath away and transport you right back to 1963 when

we celebrate “**Early Days at The Locarno**”. We will focus on the early days of The Beatles' career with a special tribute to Mersey Beat. The Rolling Stones also played The Locarno in 1963, so a great excuse to feature a tribute to (arguably) the second-best band in the world! Your ticket also includes coach transfers to and from the Adelphi Hotel.



Back to the **Philharmonic Hall** in the evening for a very special show, “**The Lennon & McCartney Songbook**”. Featuring many of our favourite Beatleweek artists and special guests, we will take a whirlwind ride through 60 years of the song-writing genius of Lennon & McCartney, celebrating their Beatles output as well as their solo careers. Time for bed? Not a chance. We head back to the **Adelphi Hotel** for **Late Night Party** number two! Again, four stages till late with lots of dancing. Grab some sleep and get ready for the big one!



HOTEL INFORMATION

ADELPHI HOTEL



This Edwardian style Liverpool hotel is the hub of International Beatleweek where late night parties and the Annual

Beatles Convention takes place.

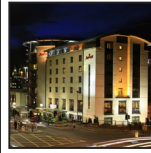
Located conveniently in the city centre near Liverpool Lime St. Station and only a 10-minute walk away from the Cavern Club. Please note: All previously single bed rooms will now have a double bed.

HARD DAYS NIGHT HOTEL



The Fab Four star accommodation is the world's only Beatles themed hotel. Specially commissioned Beatles inspired artwork adorns the walls throughout (by IBW Hall of Fame artist, Shannon). Sitting adjacent to the world famous Cavern Club and only a 10 minute walk from the Adelphi Hotel. This is also the hotel that will feature an afternoon of music on Monday 27th!

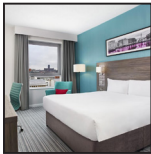
MARRIOTT HOTEL



This polished 4-Star hotel features a swimming pool, gym, spa and other fabulous amenities. Ideally located in the city centre,

surrounded by restaurants and bars, this hotel provides excellent transport links and is just minutes away from Liverpool Lime St. Station, the Adelphi Hotel and the Cavern Club.

JURY'S INN HOTEL



Situated on the famous Liverpool docks, Jury's Inn hotel is perfectly located for easy access to the Cavern Club and is just a 15 minute

walk from Liverpool Lime St. Station and the Adelphi Hotel. The Albert Dock area is a beautiful part of the city with lots to do right on the doorstep of this hotel.

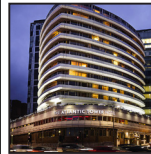
GRAND CENTRAL UNITE



Purpose built student apartments. Each flat contains up to 5 rooms with all en-suite shower and w.c. Plus shared kitchen and dining area.

A 5-minute walk away from the Adelphi Hotel and Liverpool Lime St. Please note: Crockery, utensils, and tools are not provided. Latest check-out by 10am Tuesday 28 August.

ATLANTIC TOWER



Located on Chapel Street in Liverpool's business district. This recently refurbished hotel is just a 15 minute walk away from the Adelphi

Hotel and Lime St. Station. The iconic ship shaped hotel offers stunning views across the River Mersey.

For more information on hotels visit www.internationalbeatleweek.com

MAGICAL MYSTERY TOUR

2 HOUR GUIDED TOUR OF BEATLES LIVERPOOL



Make your visit to Liverpool complete.

Book your tickets now via the Cavern website!

THE COMPLETE CAVERN CLUB STORY TOLD IN THIS

OFFICIALLY AUTHORISED 60TH ANNIVERSARY BOOK

By The Cavern...For Cavern Fans!



- Foreword by Sir Paul McCartney
- Premium quality hardback book
- Embossed Cavern brick cover
- 304 pages of glorious history
- Over 25,000 words and over 1000 rare and popular images
- Exclusive Tony Booth art print
- Limited edition memorabilia pack
- All packaged together and presented in a unique anniversary slipcase

LIMITED EDITION OF 1957 COPIES ONLY
AVAILABLE TO BUY NOW!

www.cavernclub.com

BOOKING FORM

If you are returning the form by post please send to:
CAVERN CITY TOURS, 8-10 MATHEW STREET, LIVERPOOL, L2 6RE

Don't forget you can also book by phone (0151 236 9091) or conveniently online:

www.internationalbeatleweek.com

BOOKING LEADER DETAILS

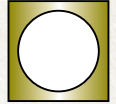
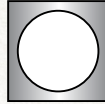
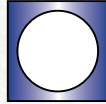
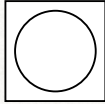
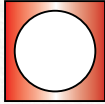
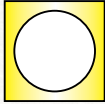
Forename..... Surname.....

Address.....

Email..... Contact No.

PACKAGE

Please enter into the circle
the number of packages you
require.



HOTEL PREFERENCE

(We will try our best to accommodate your choices)

Choice 1

Choice 2



JUST TICKETS PACKAGE

If you have your own alternative
accommodation, please check here for a
Just Tickets package.

CHECK IN DATE.....CHECK OUT DATE.....No. EXTRA NIGHTS.....

ROOM REQUIREMENTS

DOUBLE
2 People,
1 Large Bed

TWIN
2 Single
Beds

TRIPLE
3 Single
Beds

SINGLE
1 Large
Bed

ROOM 1:



ROOM 2:



ADDITIONAL GUEST NAMES

Guest 1 Guest 2

Guest 3 Guest 4

Guest 5 Guest 6

SPECIAL REQUIREMENTS AND ADDITIONAL NOTES

SINGLE ROOM SUPPLEMENTS

Hard Days Night Hotel	£51.00 per night
Adelphi Hotel	£40.00 per night
Marriott Hotel	£47.00 per night
Jurys Inn / Atlantic Tower Hotel	£42.00 per night
<i>Grand Central Unite does not have a single room supplement.</i>	

HOTEL COSTS FOR ADDITIONAL NIGHTS (per person)

Hard Days Night Hotel (based on double/twin occupancy).....	£62.00 per night
Adelphi Hotel (based on double/twin occupancy).....	£60.00 per night
Marriott Hotel (based on double/twin occupancy).....	£62.00 per night
Jurys Inn / Atlantic Tower Hotel (based on double/twin occupancy)	£62.00 per night
Grand Central Unite (based on single occupancy).....	£40.00 per night

DEPOSITS & PAYMENTS

A £50 deposit per person is required to secure your booking. Please enclose a cheque with your booking form if booking by post. Alternatively, if you would like to book with a credit/debit card please do so through our website www.internationalbeatleweek.com or phone our office (0151 236 9091).

We cannot guarantee nor confirm the hotel of your choice if the balance is not paid by June 1st 2018. Balances paid after June 1st will incur a fixed penalty charge of £20 per person. CCT cannot be held liable for any losses incurred by people during their stay; nor is CCT responsible for late cancellation due to customer illness or misfortune.

<p>All shows in The Philharmonic Hall have a limited number of VIP boxes. (Max 6 people per box).</p> <p>These are available for a supplement of £10 per person.</p>	DAY / EVENT		No. TICKETS	TOTAL SUPPLEMENT COST (£)
	FRIDAY	The Analogues (Present the White Album)		
	SATURDAY	Lennon & McCartney Songbook		

**Please note, Philharmonic Hall events are only available as part of a pre-booked package.*

TERMS & CONDITIONS

- Hotel packages are a Tour Operators Margin Scheme Supply.
- Hotel packages may be secured only upon receipt of £50 non-refundable deposit per person per package.
- Just Tickets packages are inclusive of VAT at 20%
- Just Tickets packages must be paid in full at time of booking.
- Hotel Packages must be paid in full by June 1st 2018.** Late balance payments will incur a fixed penalty charge of £20 per person.
- No refunds will be made on any package if cancellation is after June 1st. Bookings made after June 1st must be paid in full at the time of booking.
- We cannot guarantee nor confirm the hotel of your choice if the balance is not paid by 1st June 2018.**
- Accommodation alterations to confirmed package bookings after 1st June will incur a £20 administrative charge. This does not include booking extra nights, extra tickets, upgrading existing tickets and hotel rooms.
- There are a small number of Jacuzzi and superior rooms at The Adelphi Hotel at a premium of £30.00 per room, per night. Please ask for details when booking.
- CCT cannot be held liable for any losses incurred by people during their stay; nor is CCT liable for late cancellation due to customer illness or misfortune. CCT strongly urges customers to arrange their own travel insurance.**
- All tickets will be allocated on a 'first come, first served' basis. We will do our best to accommodate special requests but cannot guarantee them.**

TICKETS FOR EVENTS

If you do not wish to book a package. Please use the form below to pre-order your individual TICKETS FOR THE EVENTS YOU WISH TO ATTEND.

Shows in red are only available to package customers.

Alternatively you can purchase your tickets online at
www.internationalbeatleweek.com

					Ticket quantity	Total cost
22nd August	Wednesday	10:00am - 12:00am	Wednesday at The Cavern (3 stages) at The Cavern Club & Pub	£10.00	<input type="text"/>	<input type="text"/>
23rd August	Thursday	10:00am - 2:00am	Thursday at The Cavern (3 stages) at The Cavern Club & Pub	£10.00	<input type="text"/>	<input type="text"/>
24th August	Friday	12:00pm - 6:00pm	It's George's Birthday at Alma De Cuba	£20.00	<input checked="" type="checkbox"/>	<input checked="" type="checkbox"/>
24th August	Friday	8:00pm - 11:00pm	The Analogues - Present The White Album at The Philharmonic Hall	£25.00	<input checked="" type="checkbox"/>	<input checked="" type="checkbox"/>
24th August	Friday	11:30pm - 5:00am	Friday Adelphi Party at The Adelphi Hotel	£15.00	<input type="text"/>	<input type="text"/>
25th August	Saturday	12:00pm - 6:00pm	Early Days at The Locarno at The Olympia (The Locarno)	£23.00	<input checked="" type="checkbox"/>	<input checked="" type="checkbox"/>
25th August	Saturday	8:00pm - 11:00pm	The Lennon & McCartney Songbook at The Philharmonic Hall	£25.00	<input checked="" type="checkbox"/>	<input checked="" type="checkbox"/>
25th August	Saturday	11:30pm - 5:00am	Saturday Adelphi Party at The Adelphi Hotel	£15.00	<input type="text"/>	<input type="text"/>
26th August	Sunday	10:00am - 11:59am	Annual Beatles Convention at The Adelphi Hotel	£25.00	<input type="text"/>	<input type="text"/>
26th August	Sunday	11:59pm - 5:00am	Sunday Adelphi Party at The Adelphi Hotel	£15.00	<input type="text"/>	<input type="text"/>
27th August	Monday	12:00pm - 6:00pm	Scousechella venue TBC	£15.00	<input type="text"/>	<input type="text"/>
27th August	Monday	6:00pm - 11:00pm	Fab Four Finale at The Hard Days Night Hotel	£15.00	<input checked="" type="checkbox"/>	<input checked="" type="checkbox"/>
27th August	Monday	11:30pm - 5:00am	Monday Adelphi Party at The Adelphi Hotel	£15.00	<input type="text"/>	<input type="text"/>
28th August	Tuesday	10:00am - 12:00am	Tuesday at The Cavern (3 stages) at The Cavern Club & Pub	£10.00	<input type="text"/>	<input type="text"/>

TOTAL Number of tickets

TOTAL Cost

INTERNATIONAL BEATLEWEEK 2018

SUNDAY

26th AUGUST

Sunday can mean one thing and one thing only - the **Annual Beatles Convention** at the **Adelphi Hotel!** From 10am until midnight we celebrate all things Beatles. 1968 took The Beatles to India, brought

us the White Album and the forming of Apple Corps – all of which will feature today. In addition we will have lots more including guest speakers, interviews, flea market, film shows, meet & greets and not forgetting the small matter of live music – over 40 of the best Beatle tributes from all over the world, all in one day and all in one place.

Our annual convention is your only opportunity throughout the week to see our special guest speakers including Pattie Boyd, Freda Kelly, Tony Bramwell, Joey Molland and more!

At midnight, still in the **Adelphi Hotel**, we carry on the party with **Late Night Party** number three – are you still standing? You can sleep next week.



MONDAY

27th AUGUST

Today we are shaking things up a little as we bring you a very special *Mathew Street Festival Concert*. In 2016 Sir Paul McCartney played the “Desert Trip/Coachella” festival alongside musical legends Bob Dylan, The Rolling Stones, The Who, Roger Waters and Neil Young. Today we give you... “**Scousechella**” (*exact location yet to be confirmed*). For this event we are delighted to bring you six of the very best tribute artists who will pay homage to what was an incredible 2016 line up. This will be rocking!

From here we go straight to the **Hard Days Night Hotel** for our “**Fab Four Finale**” across four stages. We take over the whole of this amazing Beatles inspired hotel including “Blake’s Restaurant”, aptly named after Sir Peter Blake. Make a reservation for dinner and take a tour of the hotel whilst enjoying four stages of live music over two floors.



Not done yet? Good. Let’s check back into the **Adelphi Hotel** and enjoy our final **Late Night Party**. Three stages of live music including “Apple Jam” – your chance to sing or play a song of your choice alongside many of the musicians who have been entertaining us all week.

TUESDAY

28th AUGUST

It’s the final day of IBW 2018 and this is your last chance to get your annual dose of everything Beatles! We make our way back to the legendary Mathew Street as we celebrate our last day with live music across two stages at the **Cavern Club** and a third stage over the road in the **Cavern Pub**.

And in the end...it’s time to wrap up our week-long celebrations as we say goodbye to friends, old and new.



Still need more Beatles...?
This is the perfect opportunity to plan your return trip to Liverpool for the 2019 festival!

Date for the diary: 21st-27th August 2019
(it’s OK you’ll have recovered by then!)



PACKAGE PRICES

Yellow Sub

Accommodation Saturday 25th & Sunday 26th

- EARLY DAYS AT THE LOCARNO
- THE LENNON & MCCARTNEY SONG BOOK
- SATURDAY ADELPHI PARTY
- ANNUAL BEATLES CONVENTION
- SUNDAY ADELPHI PARTY

- FREE ENTRY INTO THE CAVERN CLUB
SAT, SUN & MON

Red Album

Accommodation Sunday 26th & Monday 27th

- ANNUAL BEATLES CONVENTION
- SUNDAY ADELPHI PARTY
- SCOUSECHELLA
- FAB FOUR FINALE
- MONDAY ADELPHI PARTY

- FREE ENTRY INTO THE CAVERN CLUB
SUN, MON & TUES

White Album

Accommodation Friday 24th & Saturday 25th

- IT'S GEORGE'S BIRTHDAY
- THE ANALOGUES - PRESENT THE WHITE ALBUM
- FRIDAY ADELPHI PARTY
- EARLY DAYS AT THE LOCARNO
- THE LENNON & MCCARTNEY SONG BOOK
- SATURDAY ADELPHI PARTY
- ANNUAL BEATLES CONVENTION

- FREE ENTRY INTO THE CAVERN CLUB
FRI, SAT & SUN

Blue Album

Accommodation Friday 24th, Saturday 25th
& Sunday 26th

- IT'S GEORGE'S BIRTHDAY
- THE ANALOGUES - PRESENT THE WHITE ALBUM
- FRIDAY ADELPHI PARTY
- EARLY DAYS AT THE LOCARNO
- THE LENNON & MCCARTNEY SONG BOOK
- SATURDAY ADELPHI PARTY
- ANNUAL BEATLES CONVENTION
- SUNDAY ADELPHI PARTY

- FREE ENTRY INTO THE CAVERN CLUB
FRI, SAT, SUN & MON

Silver Beatles

Accommodation Saturday 25th, Sunday 26th
& Monday 27th

- EARLY DAYS AT THE LOCARNO
- THE LENNON & MCCARTNEY SONG BOOK
- SATURDAY ADELPHI PARTY
- ANNUAL BEATLES CONVENTION
- SUNDAY ADELPHI PARTY
- SCOUSECHELLA
- FAB FOUR FINALE
- MONDAY ADELPHI PARTY

- FREE ENTRY INTO THE CAVERN CLUB
SAT, SUN, MON & TUES.

Gold Anthology

Accommodation Friday 24th, Saturday 25th
Sunday 26th, and Monday 27th

- IT'S GEORGE'S BIRTHDAY
- THE ANALOGUES - PRESENT THE WHITE ALBUM
- FRIDAY ADELPHI PARTY
- EARLY DAYS AT THE LOCARNO
- THE LENNON & MCCARTNEY SONG BOOK
- SATURDAY ADELPHI PARTY
- ANNUAL BEATLES CONVENTION
- SUNDAY ADELPHI PARTY
- SCOUSECHELLA
- FAB FOUR FINALE
- MONDAY ADELPHI PARTY

- FREE ENTRY INTO THE CAVERN CLUB
FRI, SAT, SUN, MON & TUES.

	GRAND CENTRAL UNITE	ATLANTIC TOWER	JURY'S INN	MARRIOTT	ADELPHI HOTEL	HARD DAYS NIGHT HOTEL	JUST TICKETS (No Accommodation)
RED ALBUM	£199	£239	£239	£249	£249	N/A	£100
YELLOW SUB	£220	N/A	N/A	N/A	N/A	N/A	£118
WHITE ALBUM	£269	£299	£299	£309	£309	N/A	£163
BLUE ALBUM	£329	£399	£399	£399	£399	N/A	£183
SILVER BEATLES	£319	£379	£379	£399	£399	N/A	£168
GOLD ANTHOLOGY	£439	£499	£499	£529	£529	£549	£233