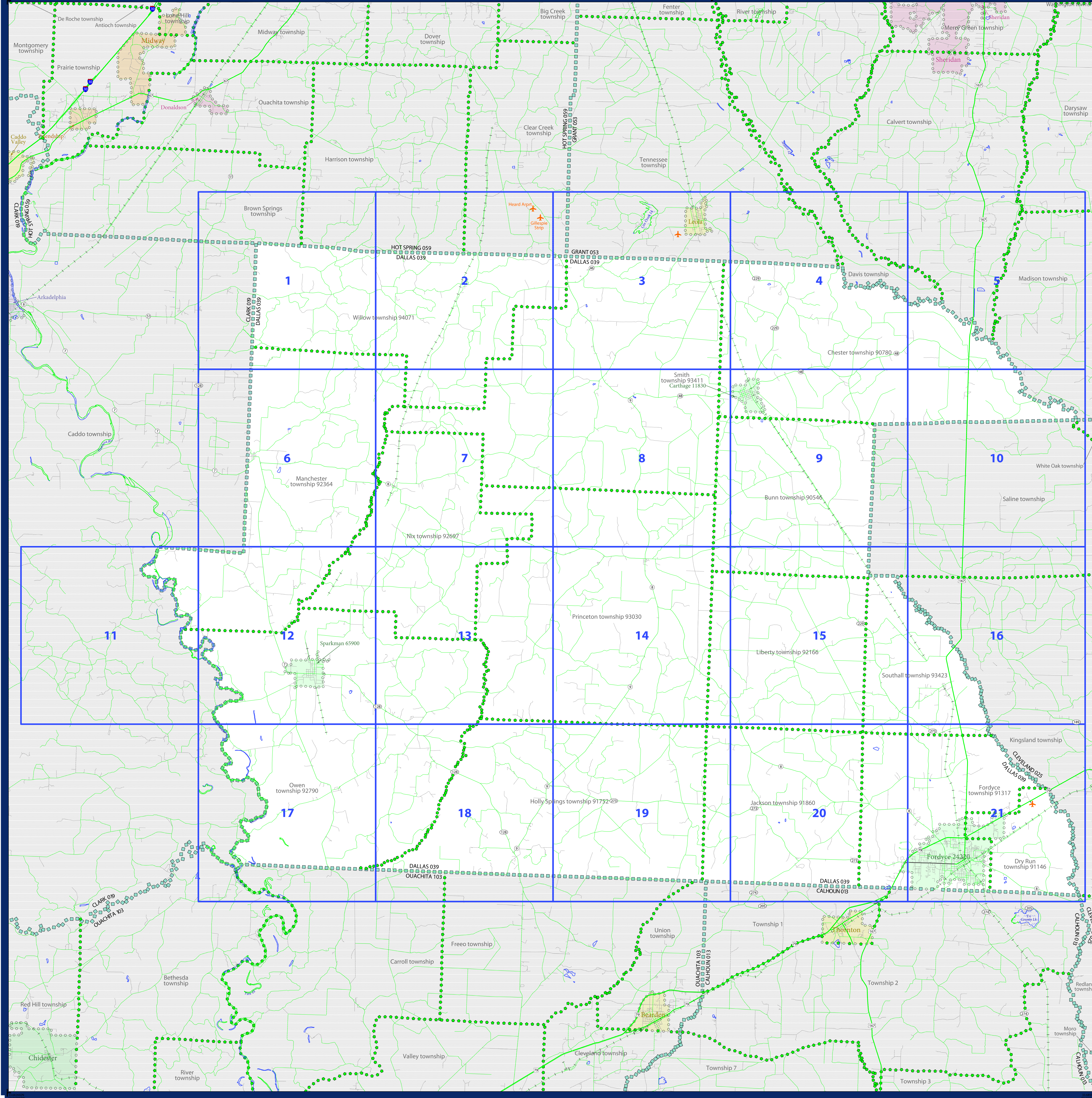


2011 BOUNDARY AND ANNEXATION SURVEY (BAS): Dallas County, AR (20503900000)



2011 BAS MAP LEGEND	
SYMBOL DESCRIPTION	LABEL STYLE
Federal American Indian Reservation	***** L'ANSE RESERVATION (TA 1880)
Off-Reservation Trust Land	+ + + + + T1880
American Indian Tribal Subdivision	***** SHONTO (620)
Alaska Native Regional Corporation	▼ ▼ ▼ ▼ ▼ NANA ANRC 52120
American Indian Area (fill)	□ □ □ □ □ NEW YORK 36
State (or statistically equivalent entity)	□ □ □ □ □ ERIE 029
County (or statistically equivalent entity)	□ □ □ □ □ Lee town 41460
Minor Civil Division (MCD) ¹	□ □ □ □ □ Jemez CCD 91650
Census County Division (CCD) ²	□ □ □ □ □ MILFORD 47500
Consolidated City	□ □ □ □ □ Davis 18100
Incorporated Place ³	□ □ □ □ □ Cochiti 16560
Census Designated Place (CDP) ⁴	□ □ □ □ □

DESCRIPTION	SYMBOL	DESCRIPTION	SYMBOL
Interstate	— — — — —	Geographic Other and Corridor	— — — — —
U.S. Highway	— — — — —	Water Body	— — — — —
State Highway	— — — — —	Swamp or Marsh	— — — — —
Other Road	— — — — —	Glacier	— — — — —
Call-de-act	— — — — —	Airport	— — — — —
Circle	○	Cemetery	— — — — —
Address Range Break ⁴	— — — — —	Golf Course	— — — — —
ZIP Trail, Stages, Alley, Walkway, or Ferry	— — — — —	Military	— — — — —
Railroad	— — — — —	National Park or Forest	— — — — —
Pipeline or Power Line	— — — — —	Other Park	— — — — —
Ridge or Fence	— — — — —	Mountain Peak or Hill	— — — — —
Property Line	— — — — —	Inset Area	— — — — —
Nonvisible Boundary or Feature Not Elsewhere Classified	— — — — —	Outside Subject Area	— — — — —
Perennial Stream	— — — — —		
Intermittent Stream	— — — — —		

Where state, county, and/or MCD/CCD boundaries coincide, the map shows the boundary symbol for only the highest-ranking of these boundaries. Where American Indian reservation and American Indian tribal subdivision boundaries coincide, the map shows only the American Indian reservation boundaries.

1 "MCD" indicates a false MCD. These are for Census use only.
 2 The CCD and CDP boundaries represent statistical entities only. They are not to be updated through the BAS.
 3 Incorporated place name color correlates to the incorporated place fill color.
 4 Address range break values represent the last address stored in the MAF/TIGER database for each street that crosses the boundary of your jurisdiction.

Due to space limitations, some road names, along with other feature and geography names on the map, may not be shown.

The Census Bureau stores primary and alternate road names, but only primary road names are used to label the roads on the BAS maps.

The Census Bureau is working to improve our road data to address inconsistencies in road classification and their resulting symbolization seen on the BAS maps.

SIGNATURE BOX

The corrected boundaries shown on the map are accurate as of January 1, 2011.

Print Name: _____

Position: _____

Signature: _____

Telephone: _____ Date: _____

For Census Use Only

PREPROCESSING SHEET CHANGES

State Code: _____ County Code: _____

Boundary Change: N B F A J (circle)

Late BAS: Y N A/L P/L

Other Entity Affected / Type of Change (circle)

_____	B	F	A	L	J
_____	B	F	A	L	J
_____	B	F	A	L	J
_____	B	F	A	L	J

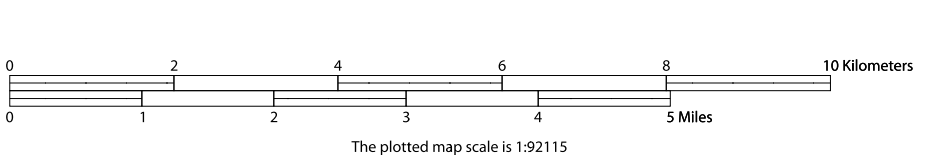
All legal boundaries and names reported through the 2010 BAS. The boundaries shown on this map are for Census Bureau statistical data collection and tabulation purposes only; their depiction and designation for statistical purposes does not constitute a determination of jurisdictional authority or rights of ownership or entitlement.

Source: U.S. Census Bureau's MAF/TIGER database (TAB10STD5)

Created by Geography Division: September 21, 2010

U.S. DEPARTMENT OF COMMERCE Economics and Statistics Administration U.S. Census Bureau

Projection: Albers Equal Area Conic
 Datum: NAD83
 Spheroid: GRS 80
 1st Standard Parallel: 33 35 11
 2nd Standard Parallel: 35 55 01
 Central Meridian: -92 07 52
 Latitude of Projection's Origin: 33 00 14
 False Easting: 0
 False Northing: 0



BAS Submission Deadline: March 1, 2011

PDF versions of the BAS maps are now available at:
www.census.gov/geo/www/bas/bas/home.html

For more information, or to request additional maps, please email geo.bas@census.gov, call 1-800-972-5631, or visit www.census.gov/geo/www/bas/bas/home.html.

USCENSUSBUREAU

Total Sheets: 22 (Index 1; Parent 21; Inset 0)

NAME: Dallas County (039)
 ENTITY TYPE: County or statistically equivalent entity
 ST: Arkansas (05)

INDEX OR PARENT SHEET #: 000
 INSET SHEET #: 000000

